



Dell Inspiron 17-5755 Hard Drive Replacement

This guide will instruct you on how to replace the hard drive for the Dell Inspiron 17-5755.

Written By: Jeff



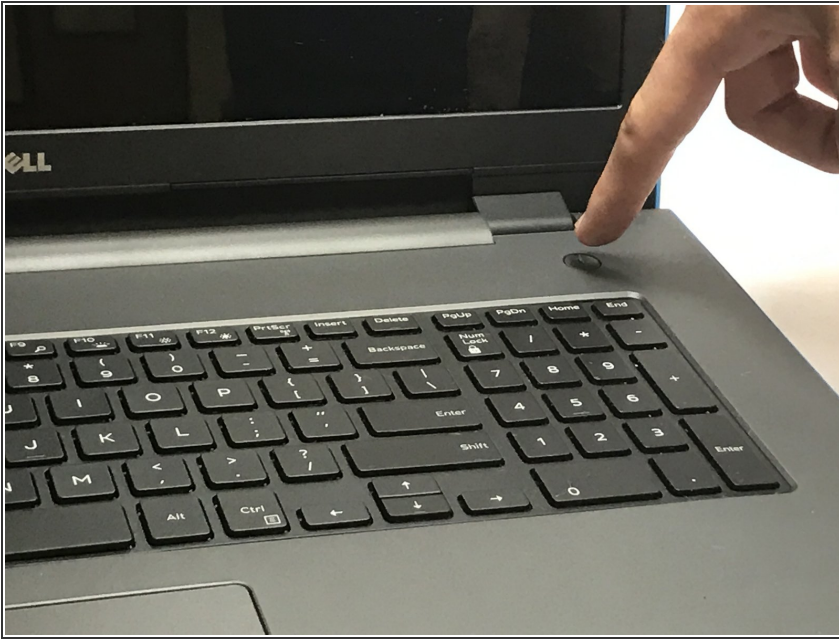
INTRODUCTION


This guide will allow you to replace a damaged/faulty hard drive for the Dell Inspiron 17-5755. Please ensure that the battery is removed before performing this replacement

TOOLS:

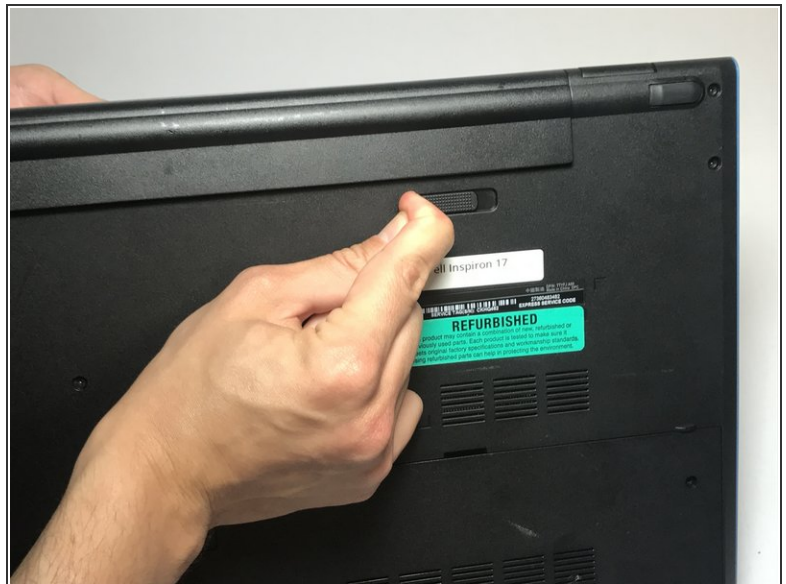
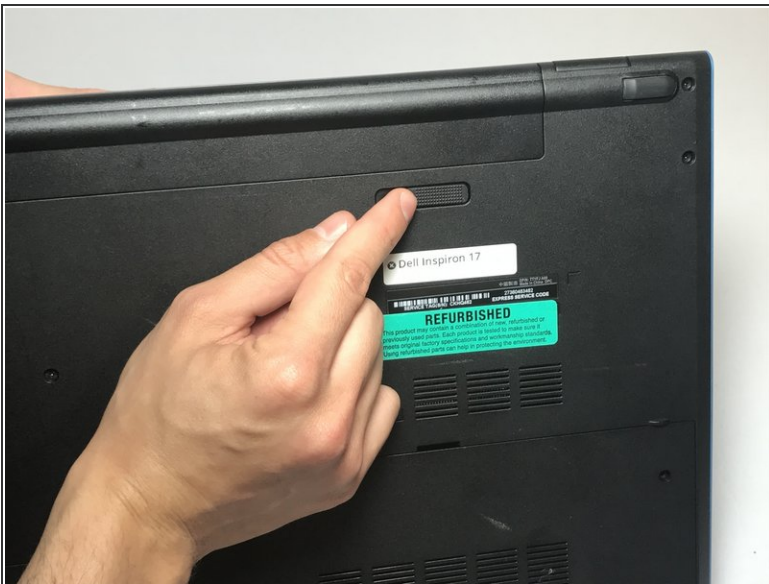
- [Phillips #0 Screwdriver](#) (1)
 - [iFixit Opening Tools](#) (1)
-

Step 1 — Battery



 Make sure the computer has been shut down, and isn't plugged into an outlet before attempting to remove the battery.

Step 2



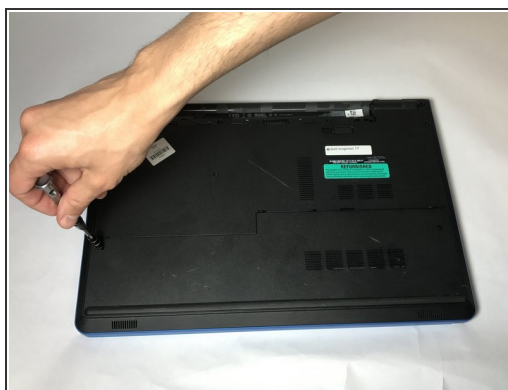
- Find the battery release latch on the bottom side of the computer.
- Slide the latch to the left until you hear a "click". This indicates that the battery has been released.

Step 3



- Safely remove the battery from the laptop.

Step 4 — Hard Drive



- Turn over your laptop and locate the two screws which secure the base cover.
- Use a Phillips #0 screwdriver to unscrew the 8mm screws which secure the base cover.

Step 5



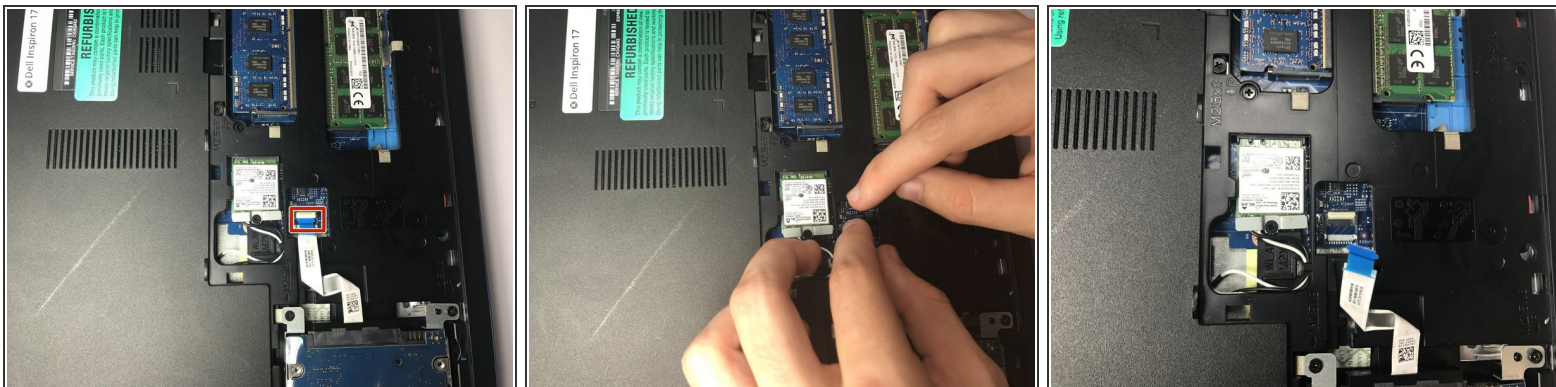
- Locate the tabs that hold the base cover to the laptop and use a plastic opening tool to gently release the base cover.

Step 6



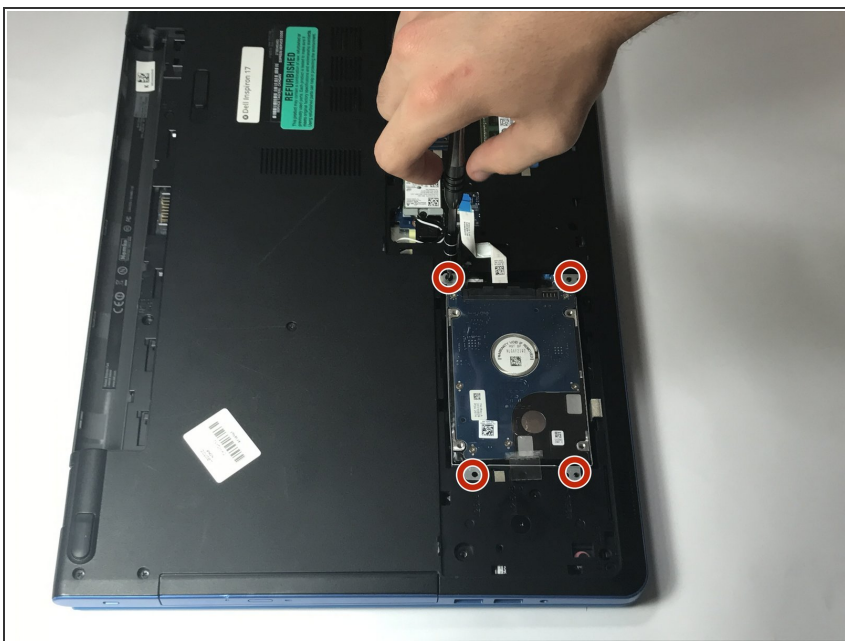
- Now with the base cover removed, you may lift it off of the laptop and continue.

Step 7



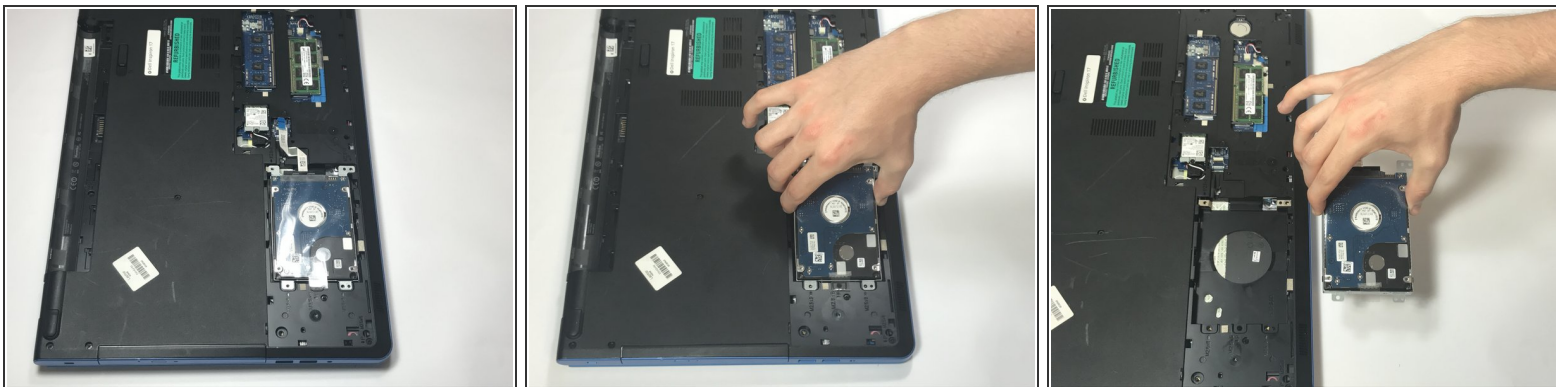
- Locate the hard drive cable, and disconnect it from the laptop by lifting the latch which secures the cable.

Step 8



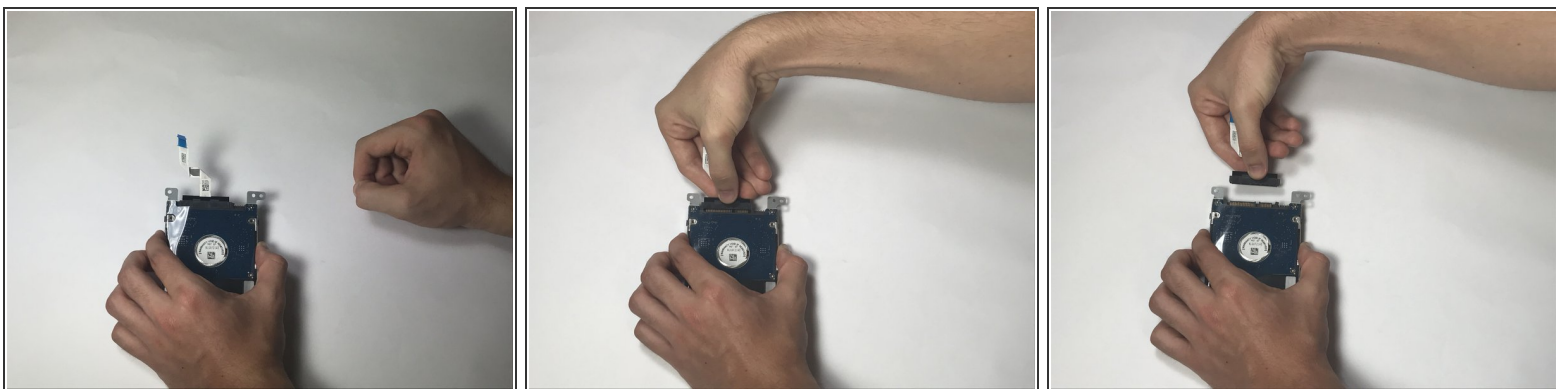
- Use a Phillips #0 screwdriver to remove the four 8mm screws which secure the hard drive assembly to the laptop.

Step 9



- Carefully remove the hard drive and its assembly from the laptop.

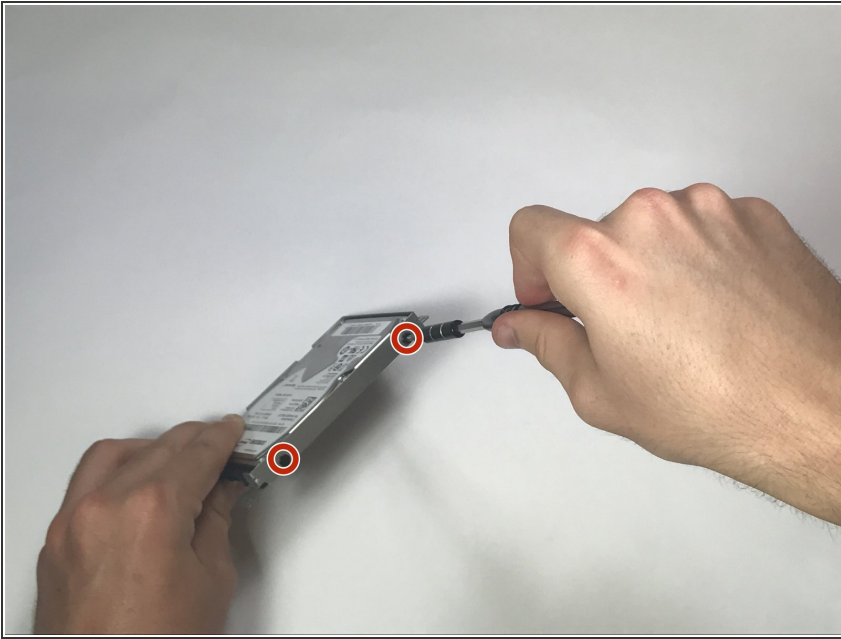
Step 10



- Remove the interposer by grabbing the black portion of the assembly, and pulling it away from the hard drive.

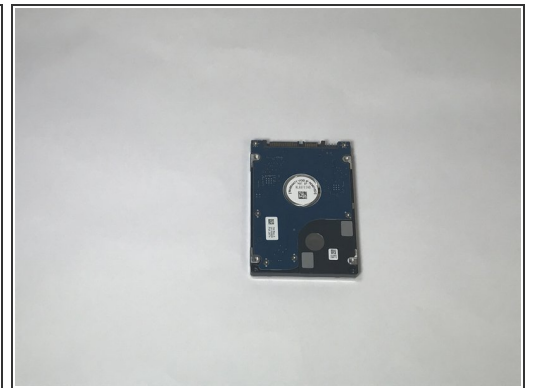
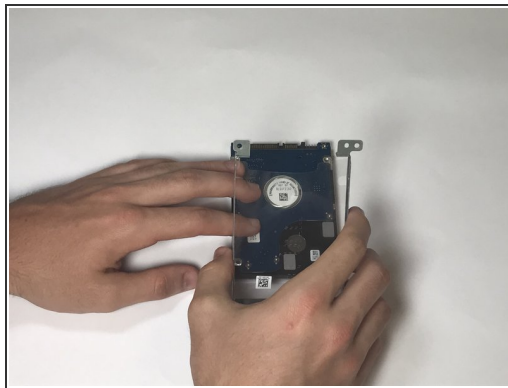
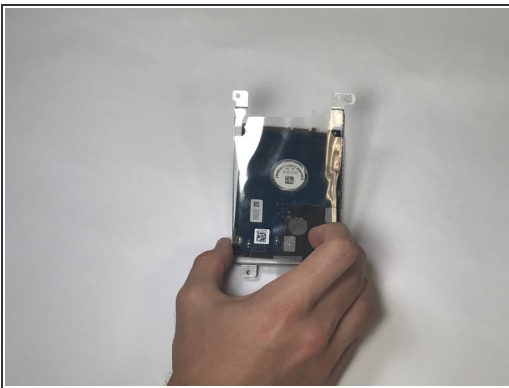
 Be sure to not remove the interposer by pulling on the cable attached to it.

Step 11



- Use a Phillips #0 screwdriver to remove the four 4mm screws on either side of the hard drive assembly.
- ⓘ These screws are very small. Make sure not to misplace them.

Step 12



- Safely remove the hard drive assembly from the hard drive to complete the process.

To reassemble your device, follow these instructions in reverse order.