



Dell Inspiron 1721 Heat Sink Replacement

How to replace a Dell Inspiron 1721 heat sink.

Written By: Kristen Gismondi

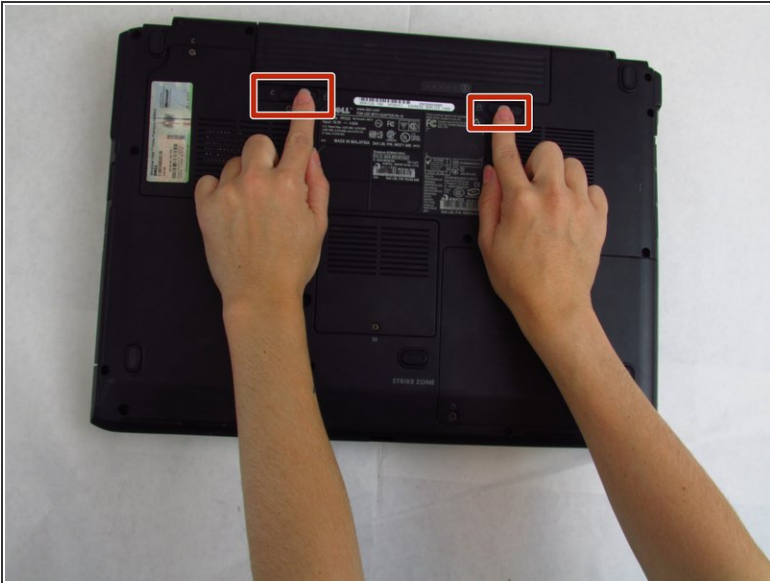




TOOLS:

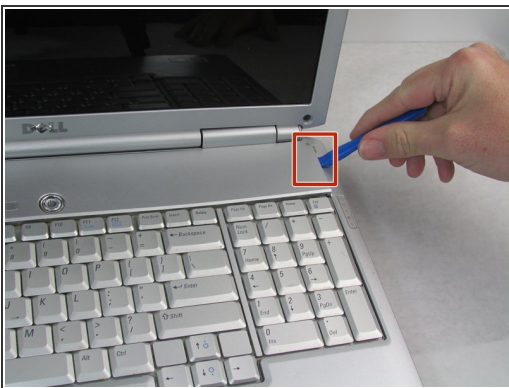
- [iFixit Opening Tools](#) (1)
- [Phillips #1 Screwdriver](#) (1)
- [Phillips #0 Screwdriver](#) (1)
- [Spudger](#) (1)

Step 1 — Battery



- Slide tabs outward to undo the locks.
- Grab and pull the battery away from the device to remove.

Step 2 — Hinge Plate Cover



- Pry up on the corner of the hinge cover with an iFixit opening tool.
- Use the iFixit opening tool along both sides and the front of the hinge cover to release it.
- Lean the display back as far as it goes and lift up on the hinge cover to remove.

Step 3 — Display Assembly



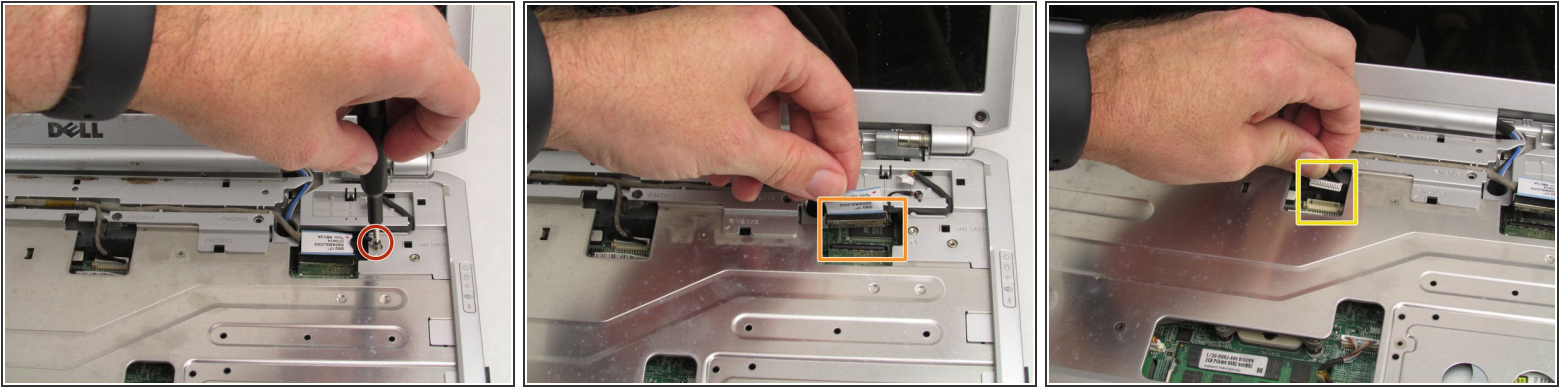
- Loosen the two captive Phillips #0 screws.
- Remove the cover.

Step 4



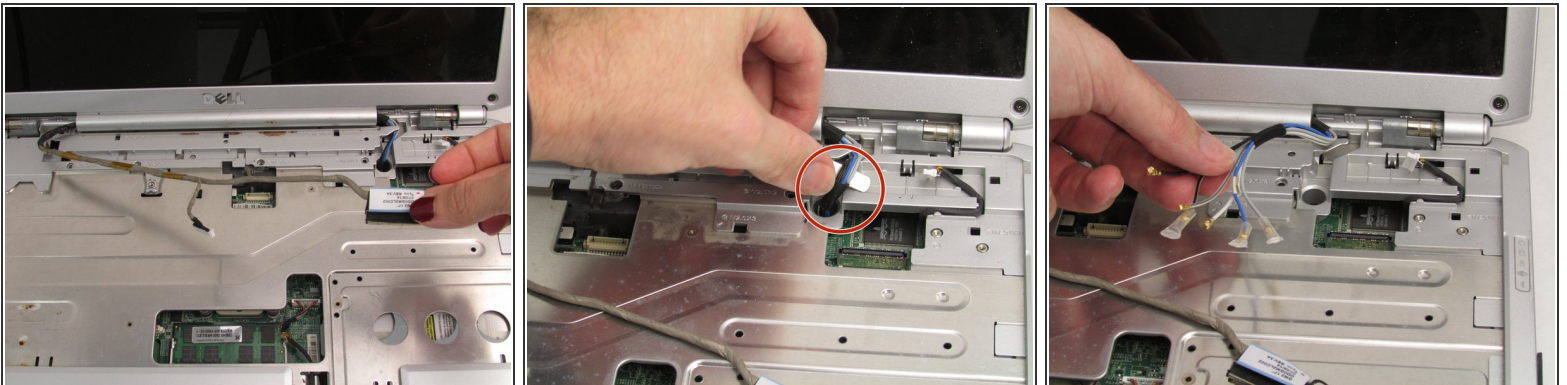
- Disconnect the antenna connectors from the WLAN card.

Step 5



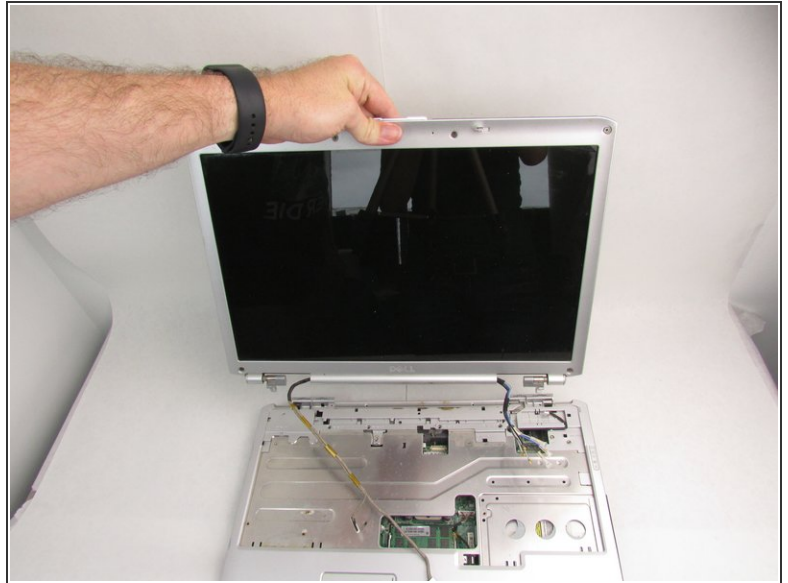
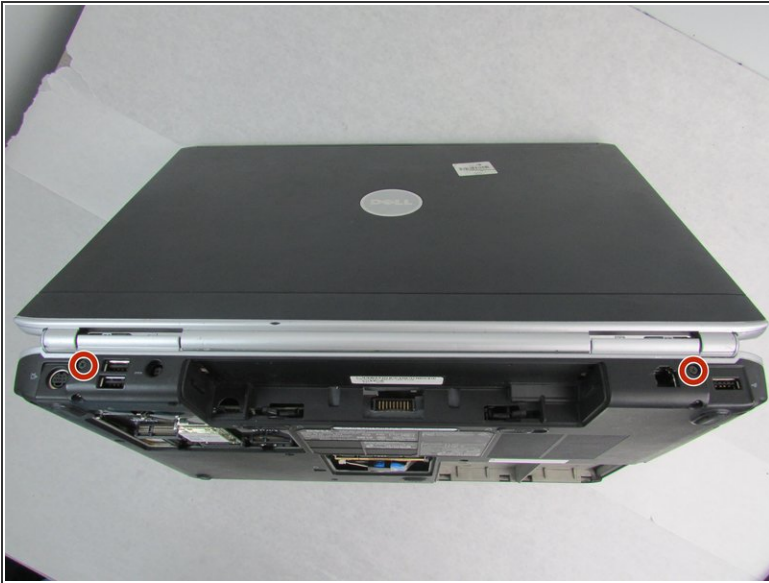
- Remove the 3mm Phillips #0 screw securing the connector to the case ground.
- Disconnect the display connector.
- Disconnect the second connector, then remove the cable from the base.

Step 6



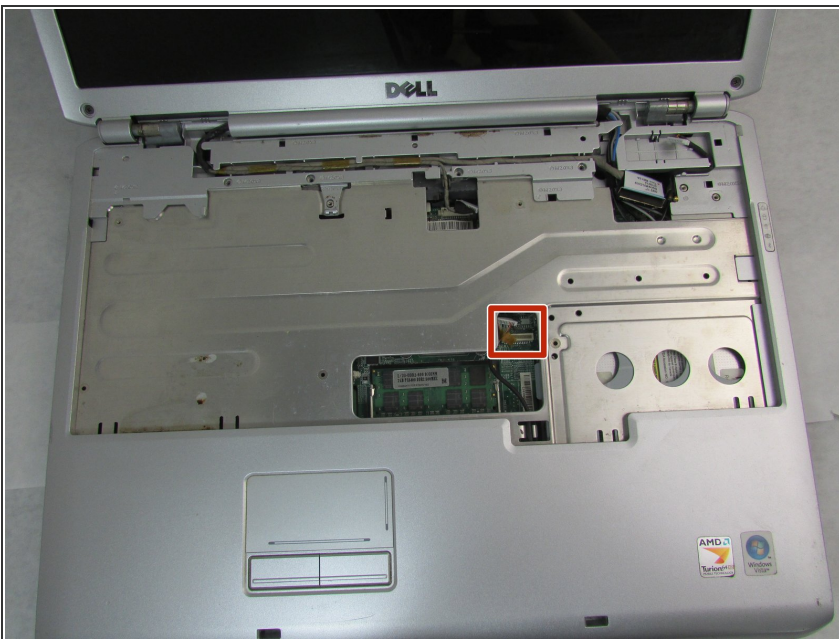
- Remove the display cable from the palm rest.
- Use a spudger to carefully pull the antenna wires through to front of the device.

Step 7



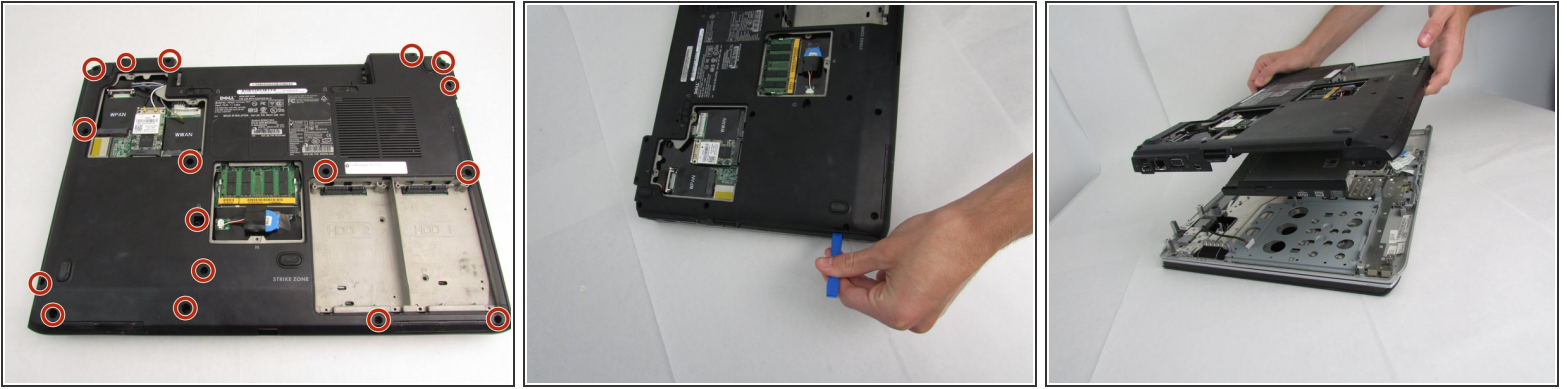
- Remove the two 3.5 mm Phillips screws that hold the display assembly in place.
- Lift the assembly straight up to separate it from the body of the device.

Step 8 — Back Cover



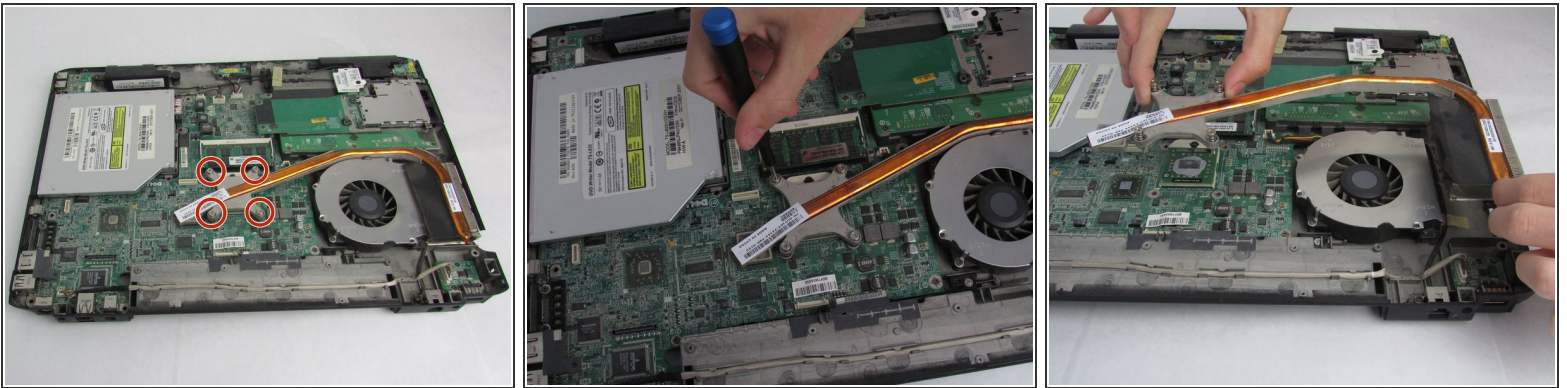
- Disconnect the touch pad connector.

Step 9



- Lay the device flat and remove the 17 7mm Phillips #0 screws.
- Use an iFixit opening tool to separate the back cover.
- Remove the back cover.

Step 10 — Heat Sink



- Unscrew the Phillips #0 screws attaching the heat sink to the motherboard.
 - ⓘ The screws attaching the heat sink to the motherboard are part of the heat sink.
- Carefully remove the heat sink from the motherboard.
 - ⓘ You may have to apply upward force while removing the heat sink from the motherboard, due to the thermal paste between it and the CPU.

To reassemble your device, follow these instructions in reverse order.