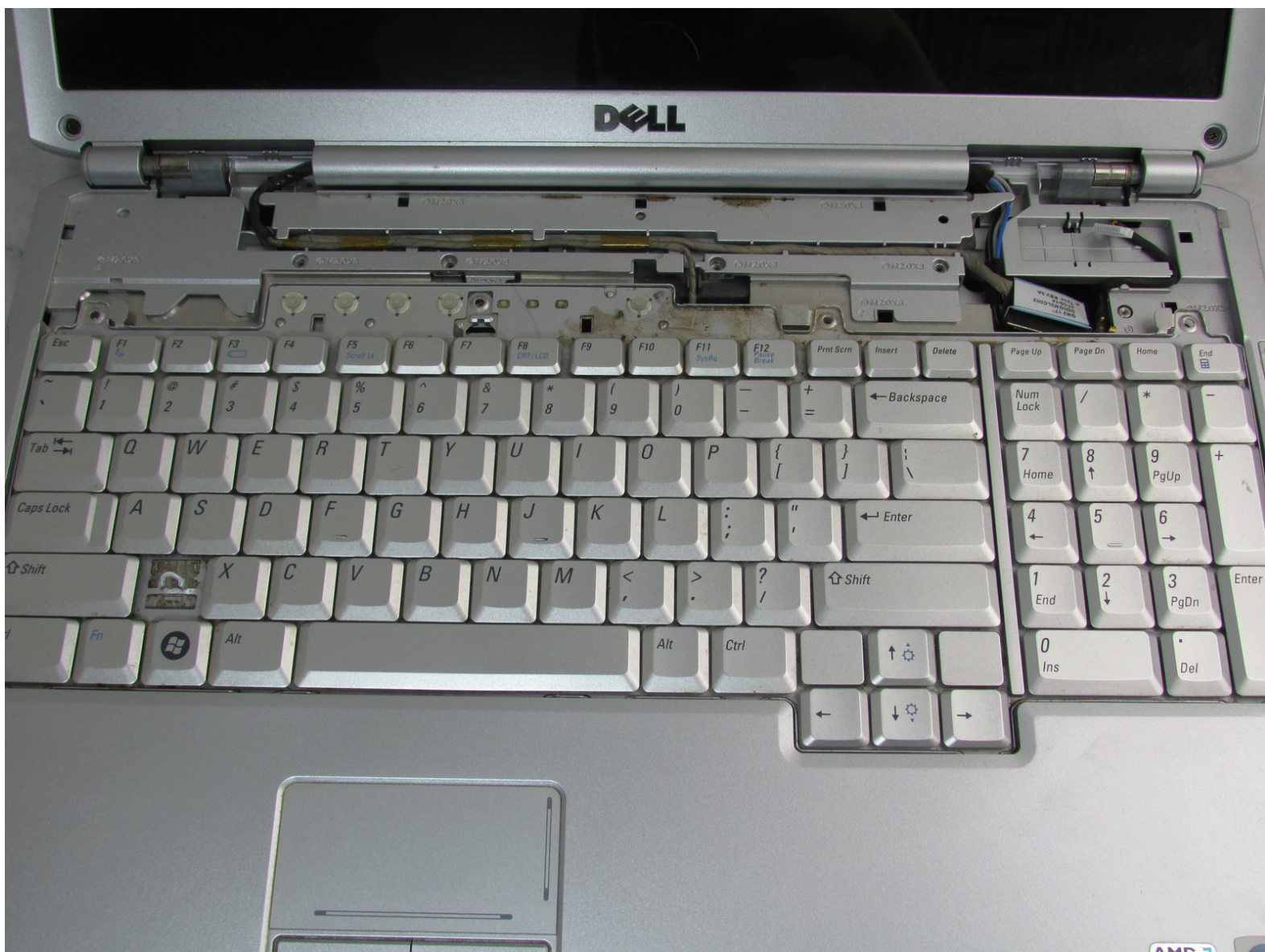




# Dell Inspiron 1721 Hinge Plate Cover Replacement

How to replace the Dell Inspiron 1721 hinge cover.

Written By: Jason Haddox



---

## INTRODUCTION

The hinge plate covers many of the screws and cables that connect to the interior of the device. Removing this component is necessary to access most other components of the Dell Inspiron 1721.

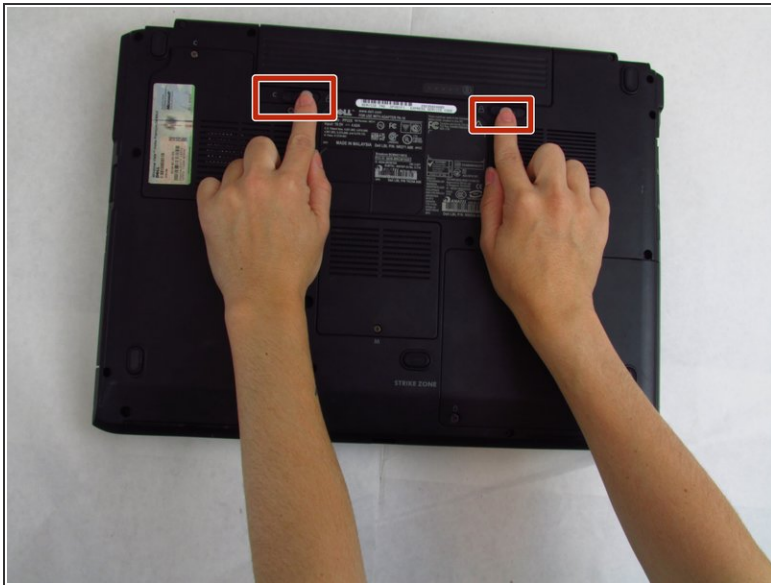
Be sure the device is completely turned off before removing this part.



### TOOLS:

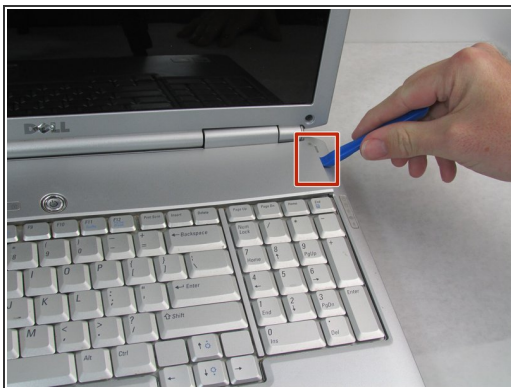
- [iFixit Opening Tools](#) (1)
-

## Step 1 — Battery



- Slide tabs outward to undo the locks.
- Grab and pull the battery away from the device to remove.

## Step 2 — Hinge Plate Cover



- Pry up on the corner of the hinge cover with an iFixit opening tool.
- Use the iFixit opening tool along both sides and the front of the hinge cover to release it.
- Lean the display back as far as it goes and lift up on the hinge cover to remove.

To reassemble your device, follow these instructions in reverse order.

This document was generated on 2020-04-05 02:51:08 PM (MST).

