



# Dell Inspiron 1721 Palm Rest Replacement

This guide show how to access and remove the touch pad of the Dell Inspiron 1721.

Written By: Scott Nadeau



## INTRODUCTION

If the Dell Inspiron 1721 touch pad is not registering correctly, or if the palm rest has received damage and needs to be replaced this guide will assist with the necessary steps to remove the component.

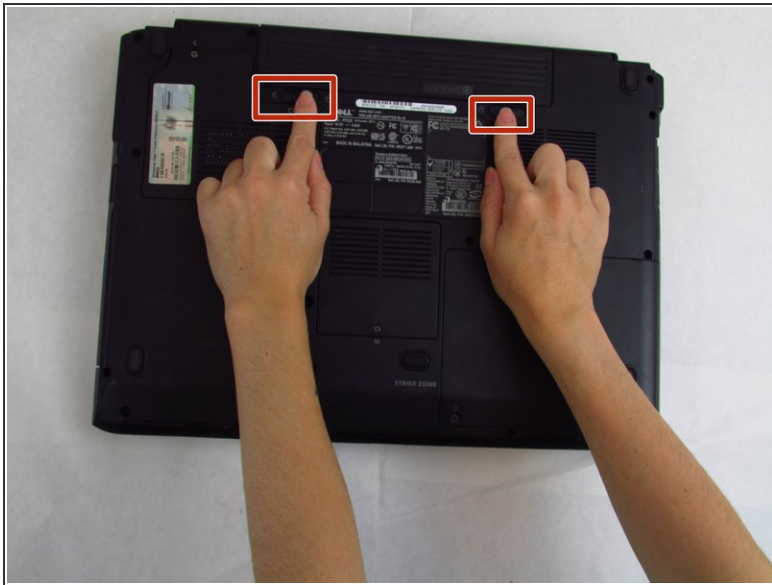
Be sure the device is completely turned off before starting the removal process.

---

### TOOLS:

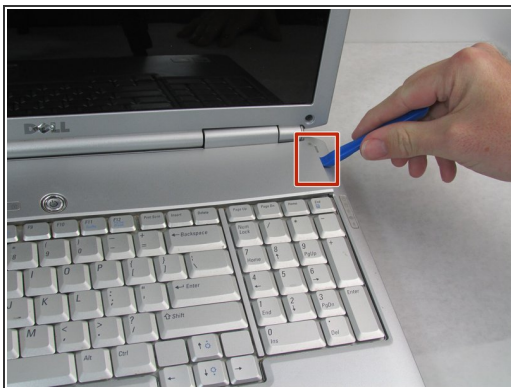
- [Phillips #1 Screwdriver](#) (1)
  - [Spudger](#) (1)
  - [iFixit Opening Tools](#) (1)
  - [Phillips #0 Screwdriver](#) (1)
-

## Step 1 — Battery



- Slide tabs outward to undo the locks.
- Grab and pull the battery away from the device to remove.

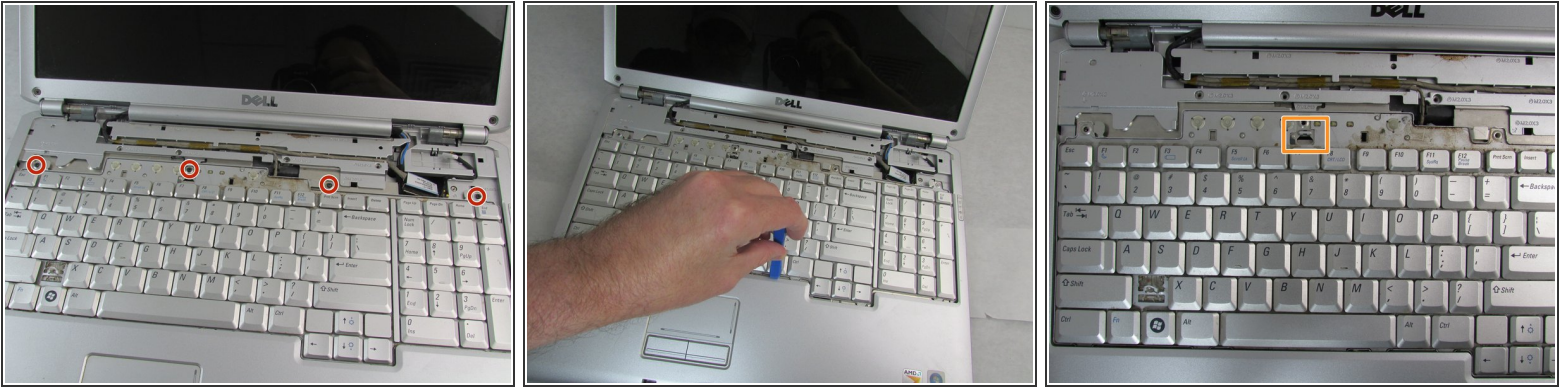
## Step 2 — Hinge Plate Cover



- Pry up on the corner of the hinge cover with an iFixit opening tool.
- Use the iFixit opening tool along both sides and the front of the hinge cover to release it.
- Lean the display back as far as it goes and lift up on the hinge cover to remove.



## Step 3 — Keyboard



- Remove four 3mm Phillips #1 screws from the top of the keyboard.
- Use an iFixit opening tool to slide the keyboard upwards toward the display.
- Slide the keyboard until it is clear of the lock tab, and lift it up to remove.

## Step 4 — Display Assembly



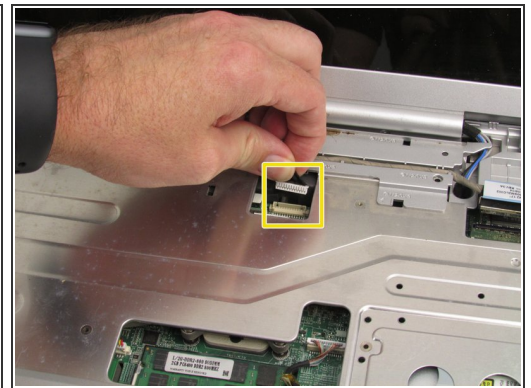
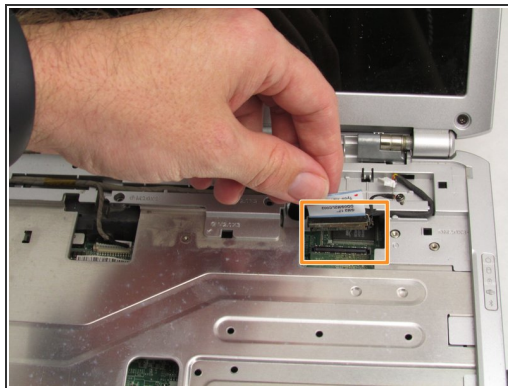
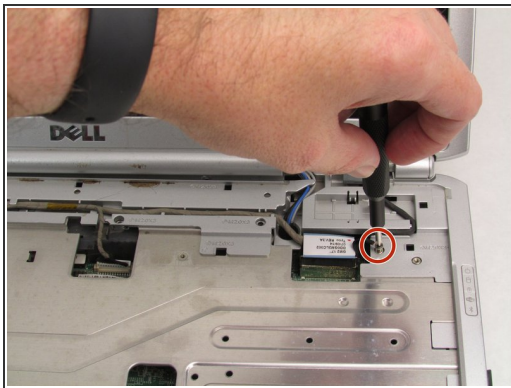
- Loosen the two captive Phillips #0 screws.
- Remove the cover.

## Step 5



- Disconnect the antenna connectors from the WLAN card.

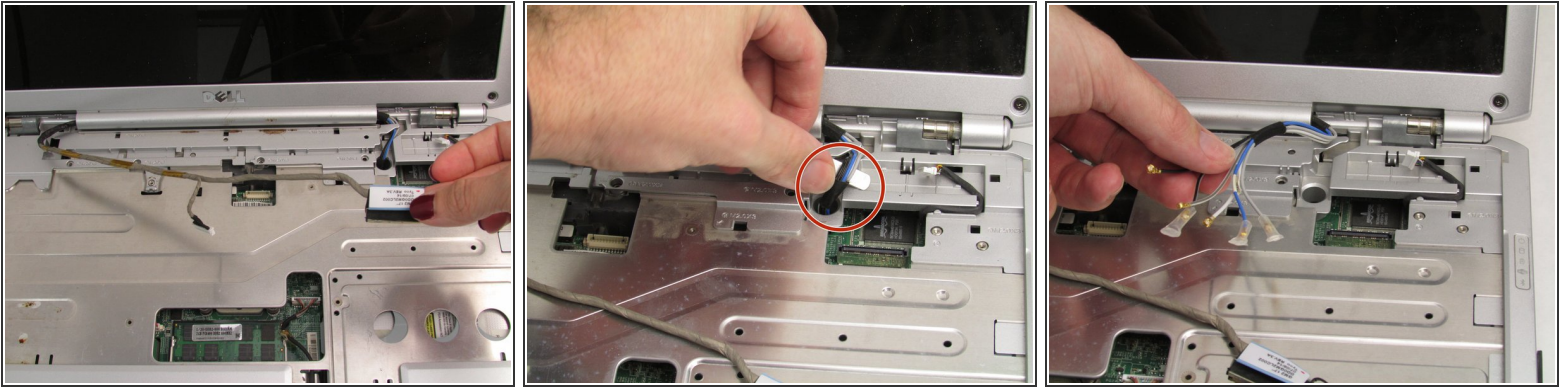
## Step 6



- Remove the 3mm Phillips #0 screw securing the connector to the case ground.
- Disconnect the display connector.
- Disconnect the second connector, then remove the cable from the base.

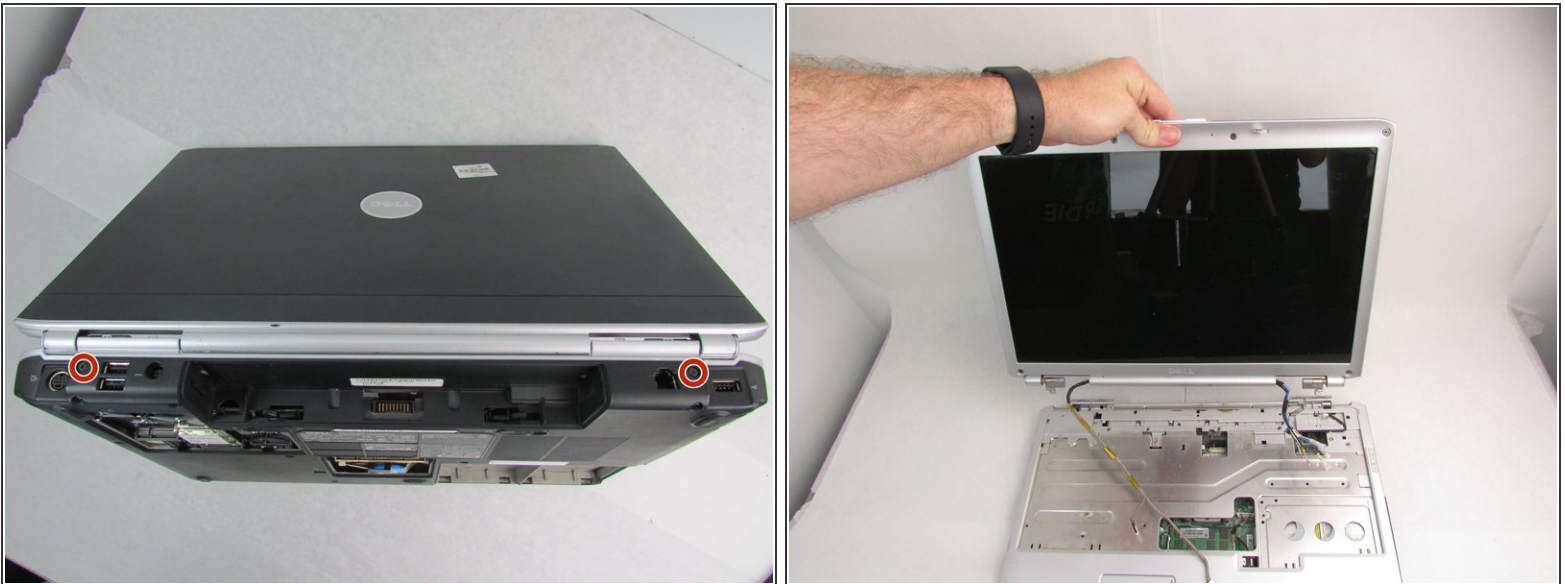


## Step 7



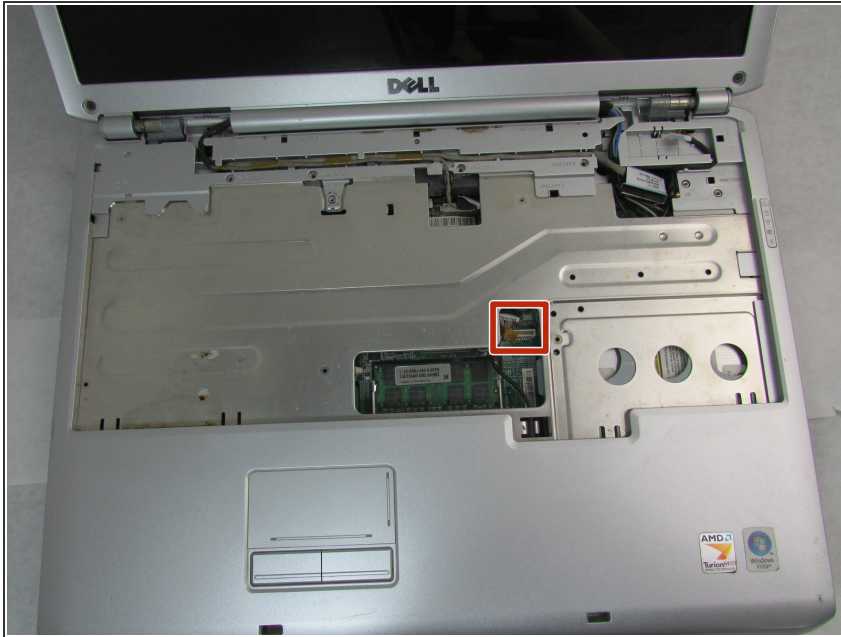
- Remove the display cable from the palm rest.
- Use a spudger to carefully pull the antenna wires through to front of the device.

## Step 8



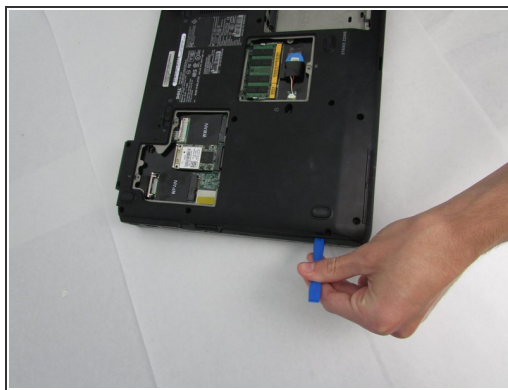
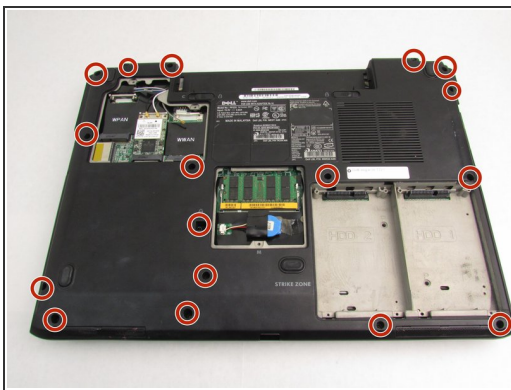
- Remove the two 3.5 mm Phillips screws that hold the display assembly in place.
- Lift the assembly straight up to separate it from the body of the device.

## Step 9 — Back Cover



- Disconnect the touch pad connector.

## Step 10



- Lay the device flat and remove the 17 7mm Phillips #0 screws.
- Use an iFixit opening tool to separate the back cover.
- Remove the back cover.

## Step 11 — Palm Rest



- Lift the palm rest up to remove.

To reassemble your device, follow these instructions in reverse order.