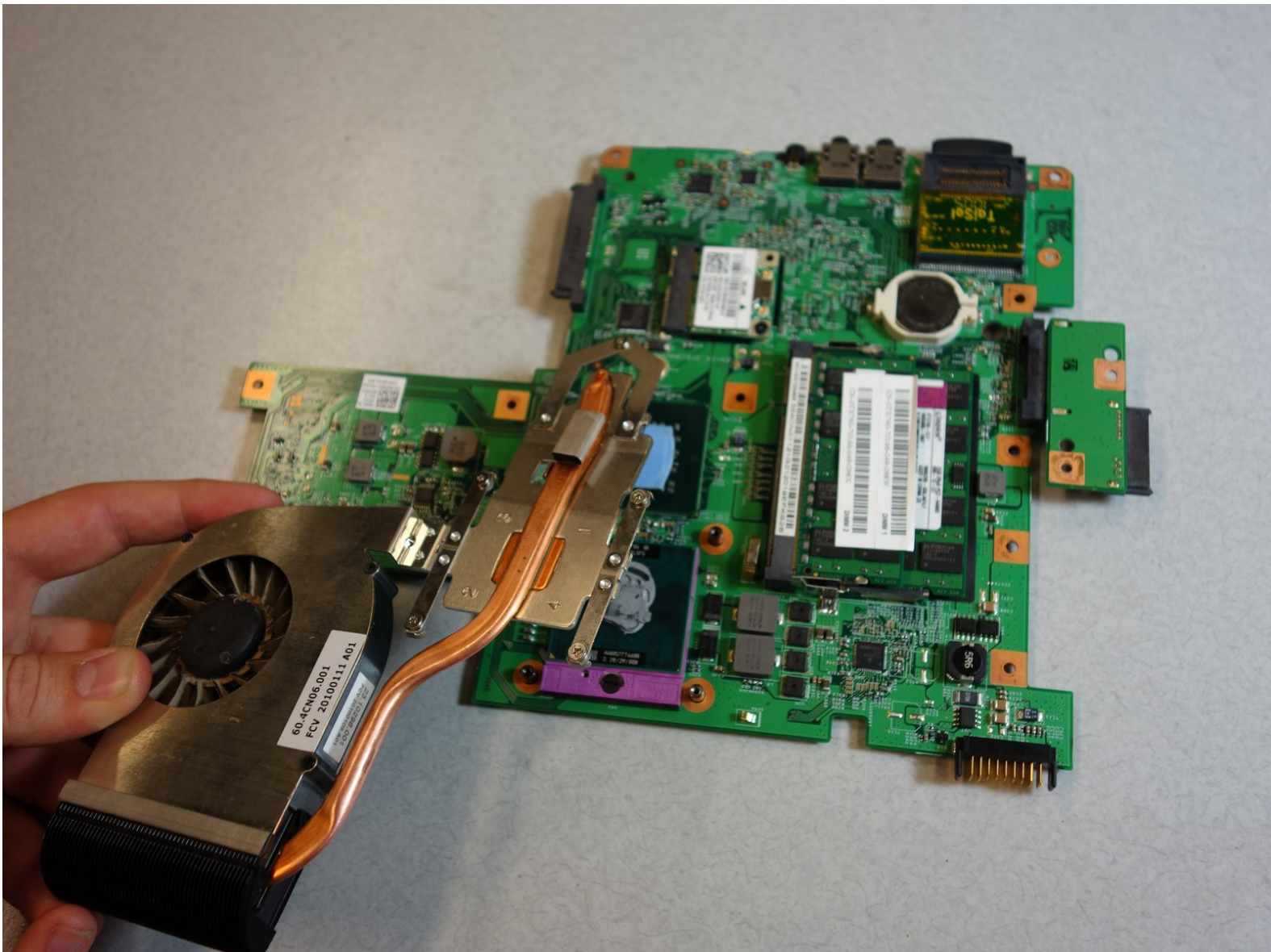




Dell Inspiron 1750 Internal Fan Replacement

This guide will show you how to replace the internal fan of your Inspiron 1750.

Written By: Tina Rickard



INTRODUCTION

It is useful to replace or clean your fan if your laptop crashes due to overheating or is abnormally hot.



TOOLS:

- [Phillips #0 Screwdriver](#) (1)
 - [Phillips #00 Screwdriver](#) (1)
 - [iFixit Opening Tools](#) (1)
 - [Spudger](#) (1)
-

Step 1 — Battery



 Unplug the laptop before changing the battery to avoid electric shock.

- Place the laptop on a flat stable surface.
- Flip the laptop over so the underside is visible.

Step 2



- Locate the battery lock switch.
- Slide the lock switch to the left (away from the lock symbol).
- Slide the battery out away from the laptop.


Step 3 — Dell Inspiron 1750 Teardown



- ⓘ Separate the screws by size and head type. Be sure to keep them in a safe place.
- Remove the sixteen 2mm Phillips #00 screws from the bottom of the laptop.
- Remove the two 2mm Phillips #0 screws from the hard drive port.

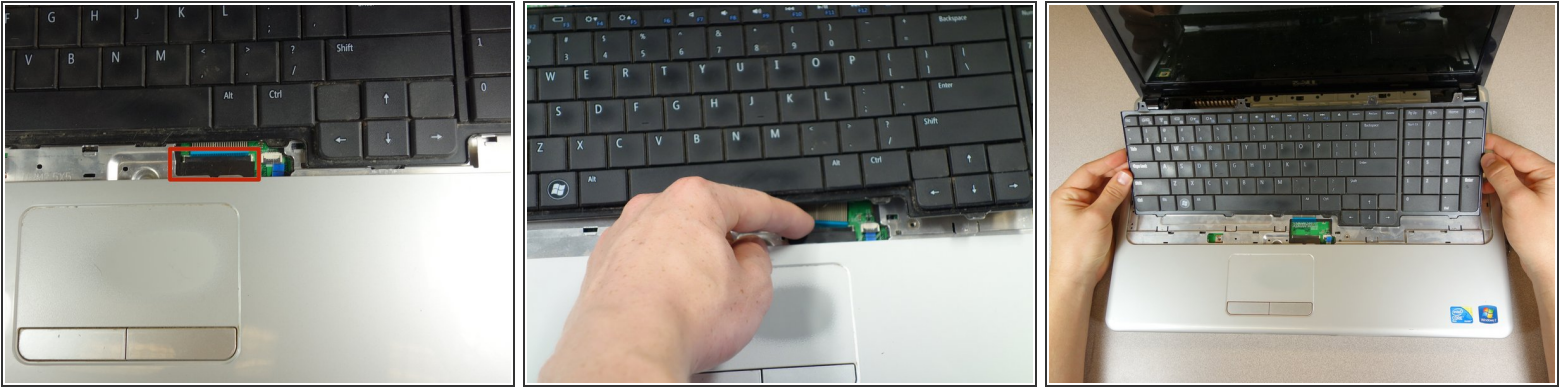
Step 4



 Keep your hand pressed firmly on the back panel to prevent it from falling.

- Flip the laptop over horizontally and open up the lid.
- Insert the tip of the plastic opening tool into the upper left corner of the panel.
- Keeping its tip under the top panel, slide the plastic opening tool around the panel until the panel is completely loose. Next gently remove the panel.
- Remove the four 2mm Phillips #0 screws at the top of the keyboard.
- Slide the plastic opening tool around the keyboard until the keyboard is completely loose. Gently remove the keyboard.

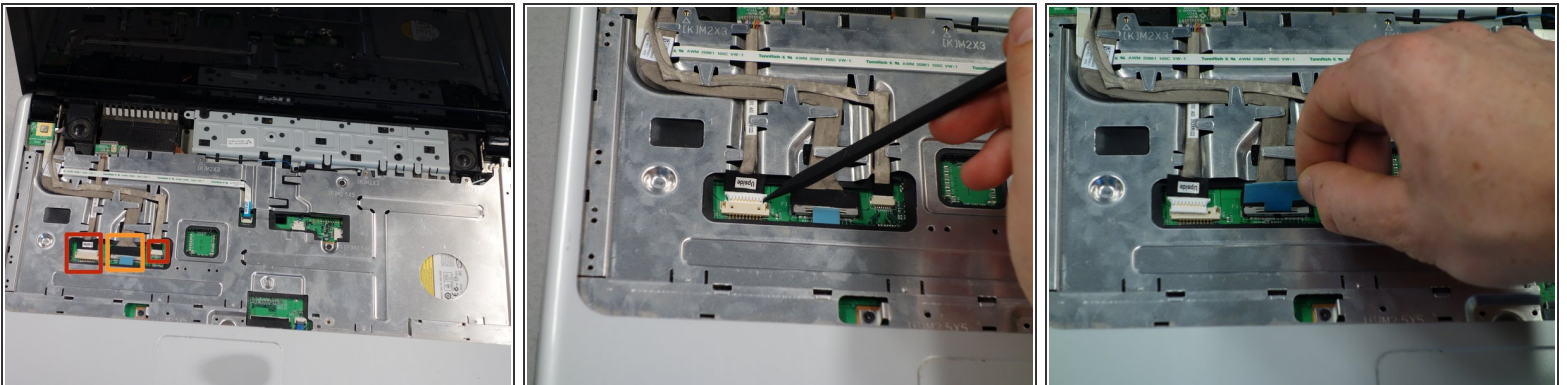
Step 5



⚠ Do not lift the keyboard completely free to avoid damaging its connections to the laptop interior.

- Locate the small black latch attached to blue tape.
- Lift the small latch with your finger and pull the blue tape from its port.
- Slide the keyboard away from the mousepad and set it aside.

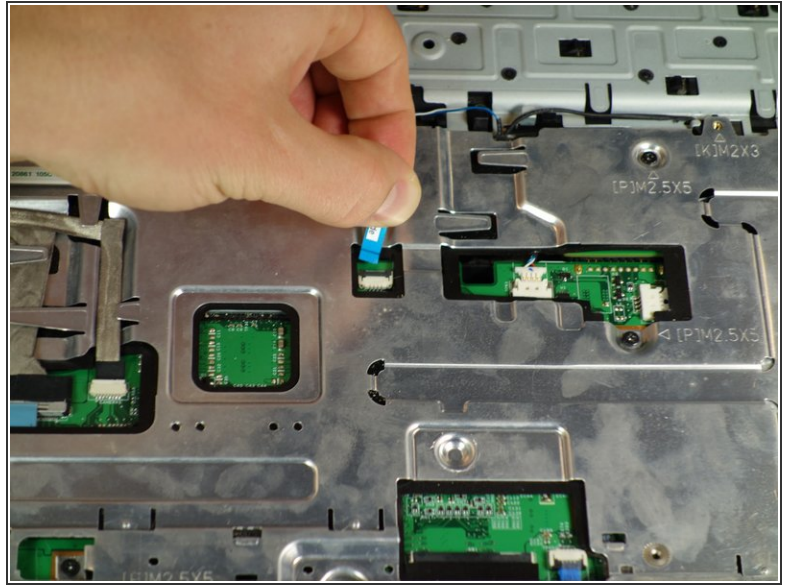
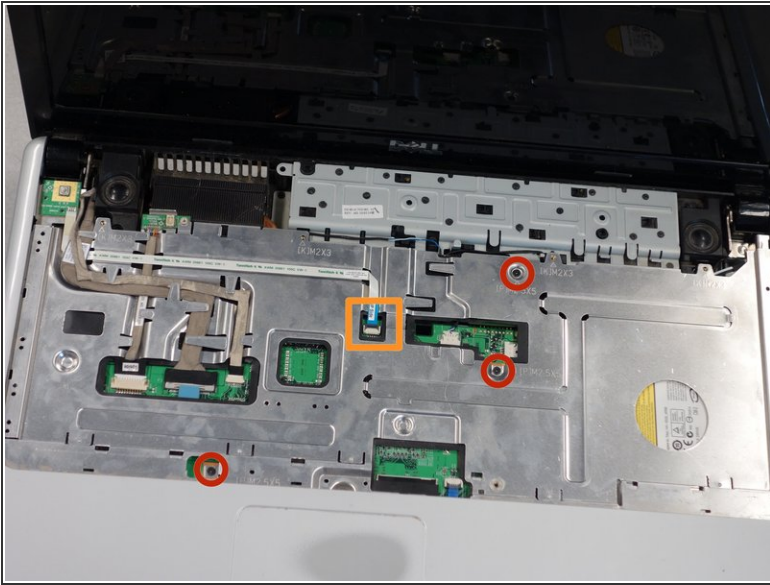
Step 6



⚠ Always pull wires from their plastic ends, not their cables, to avoid wire damage.

- Locate the three wires in the top left corner of the metal panel.
- Use the spudger to push the two cables out of their ports.
- Pull the blue tab directly up to remove middle wire.

Step 7



- Remove the three 1mm Phillips #00 screws on the metal plate.
- Lift the black cover and slide the blue tab away from the cover.

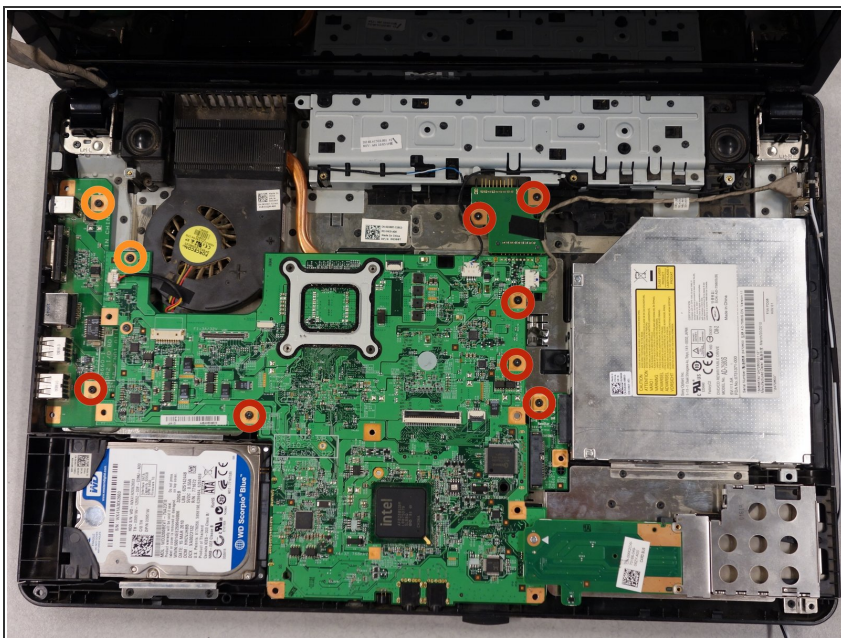
Step 8



 Always pull wires from their plastic ends, not their cables, to avoid wire damage.

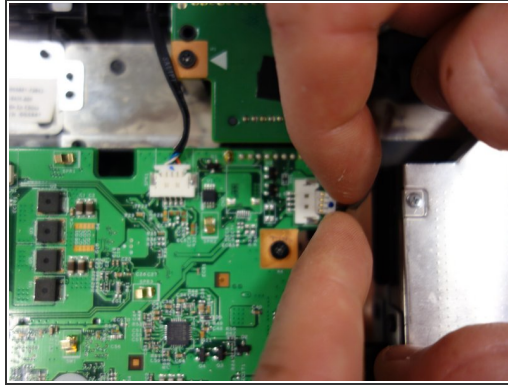
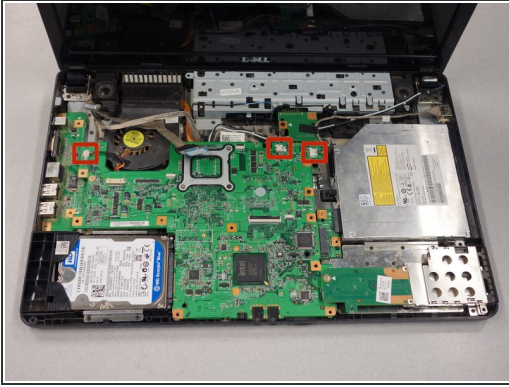
- Gently remove the three grey wires from the metal tabs.
- Insert the tip of the plastic opening tool into the bottom left corner of the panel.
- Keeping its tip under the top panel, slide the plastic opening tool around the panel until the panel is completely loose.
- Gently lift off the top metal panel.

Step 9 — Internal Fan



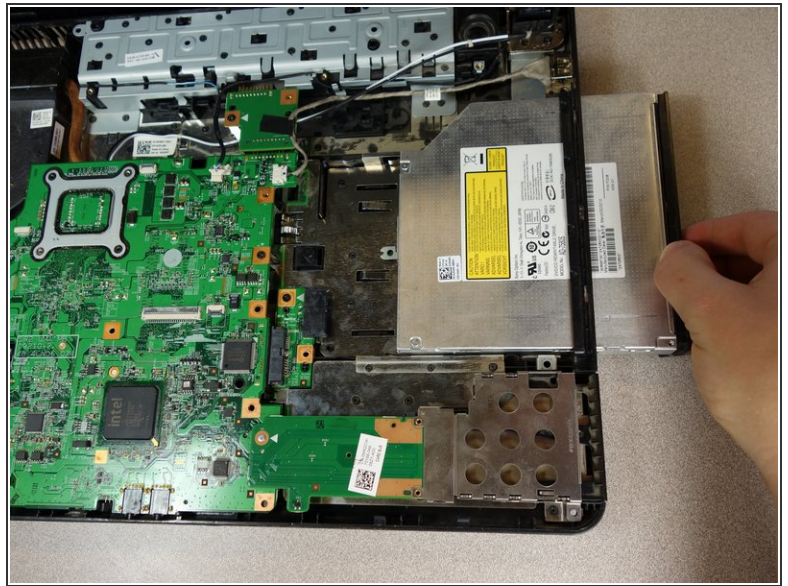
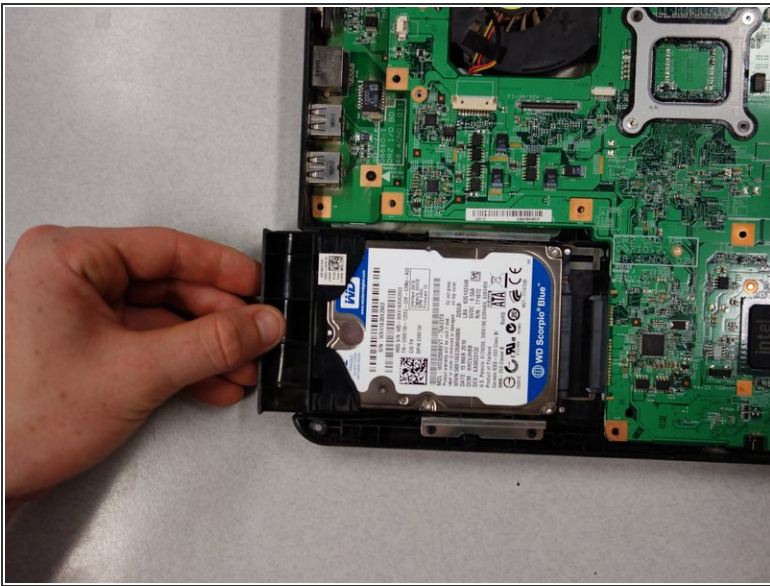
- Remove the seven 2mm Phillips #0 screws.
- Remove the two 2mm Phillips #00 screws.

Step 10



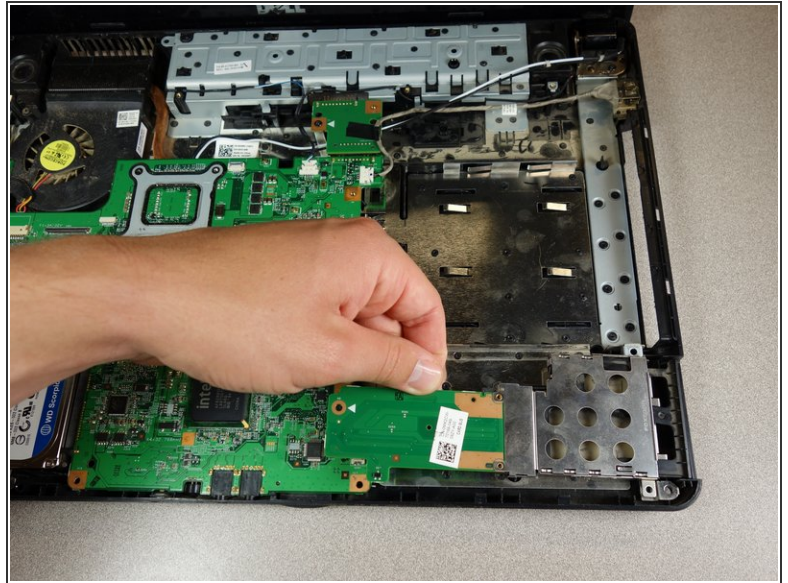
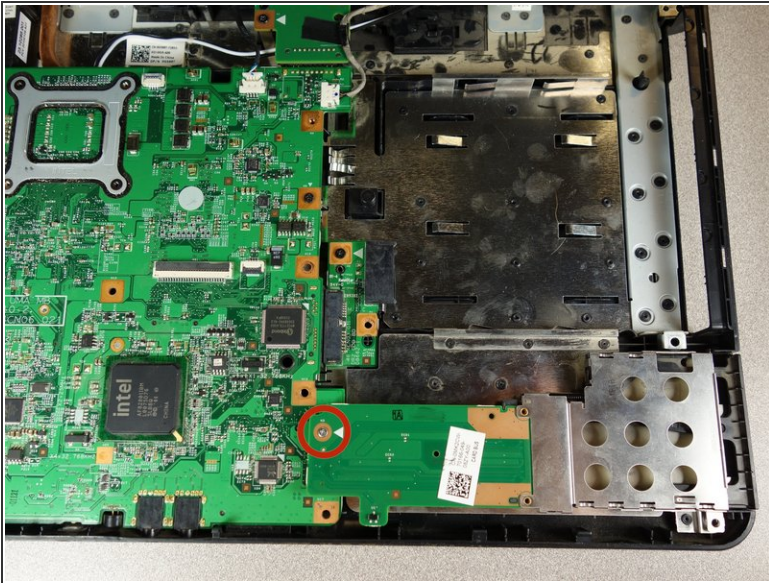
- Pull the three connections away from their ports using both fingers.
- Remove the battery connection chip from the motherboard.

Step 11



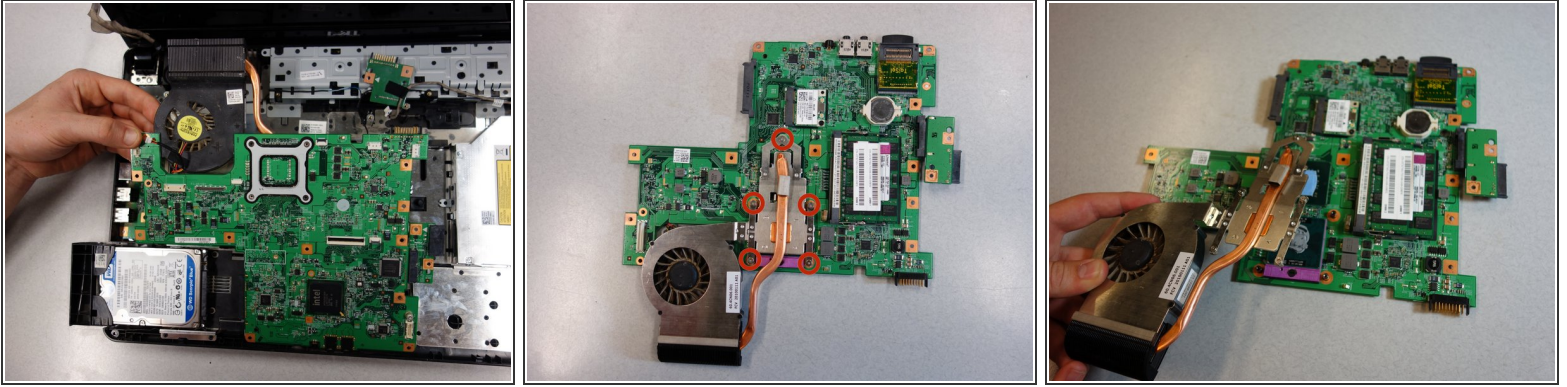
- Slide the hard drive out away from the laptop until it is free from the motherboard
- Repeat this process for the disk drive.
- ⓘ You may leave these components in their trays.

Step 12



- Remove the silver 2mm Phillips #00 screw.
- Remove the card tray from the laptop by lifting it up and away from the computer.

Step 13



- Lift the motherboard by its top end and remove it from the laptop.
- Flip the motherboard over to reveal the fan.
- ⓘ The screws in the next step are captive screws and will not come completely free, so do not try to remove from the fan.
- Remove the five 1mm Phillips #00 captive screws from the internal fan.
- Lift the fan away from the motherboard.
- Refer to iFixit's guide for removal and cleaning of the thermal paste. [How to Apply Thermal Paste](#)

To reassemble your device, follow these instructions in reverse order.