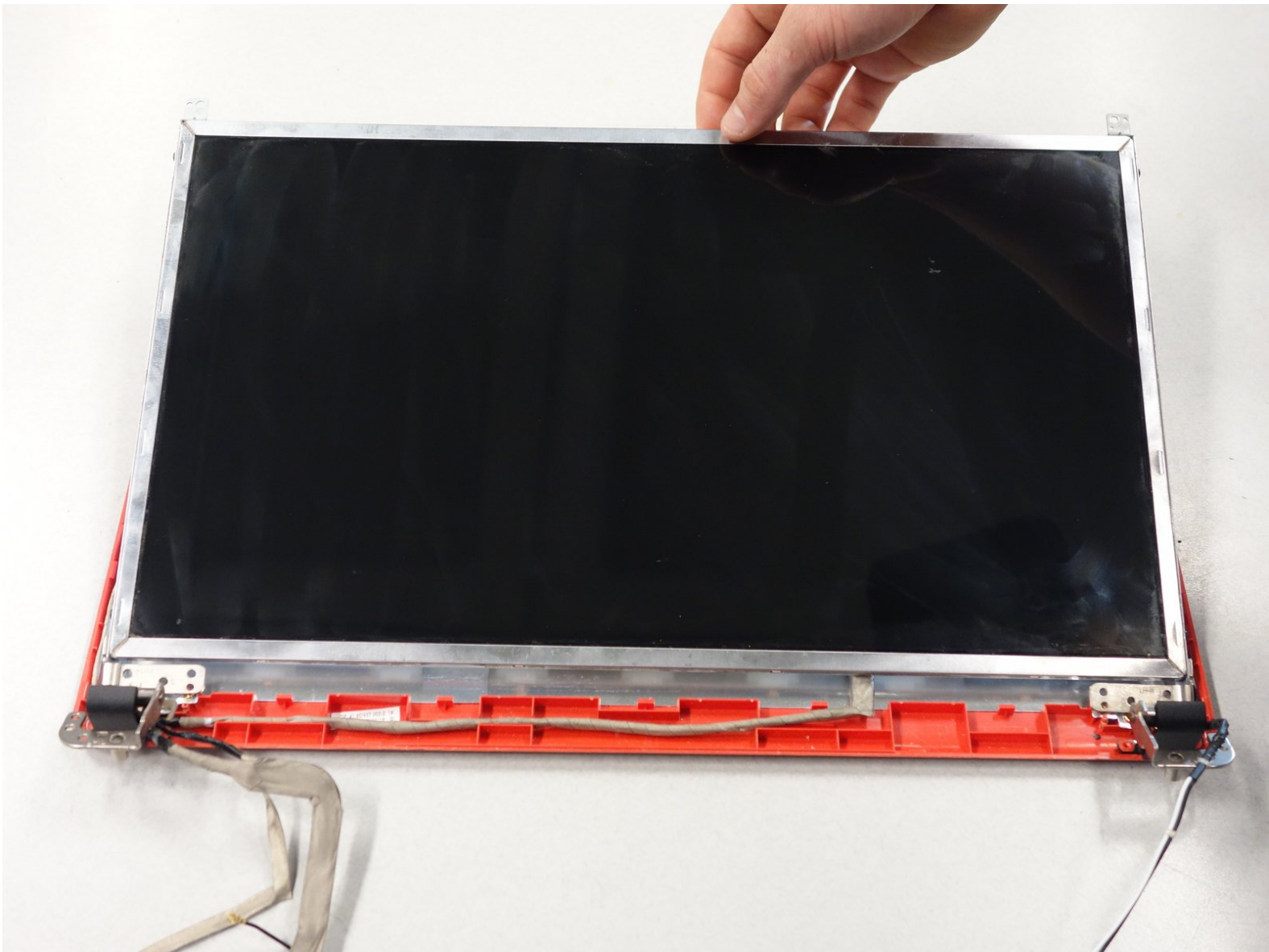




# Dell Inspiron 1750 Screen Replacement

This guide will show you how to replace the screen of your Inspiron 1750. Only perform steps 1-3 of the RAM chip replacement guide.

Written By: Tina Rickard



# INTRODUCTION

This guide is useful for replacing a damaged or malfunctioning screen.



## TOOLS:

- [Phillips #0 Screwdriver](#) (1)
- [Phillips #00 Screwdriver](#) (1)
- [iFixit Opening Tools](#) (1)



## PARTS:

- [17.3" PC Laptop LCD N173FGE-L23](#) (1)

## Step 1 — Battery



 Unplug the laptop before changing the battery to avoid electric shock.

- Place the laptop on a flat stable surface.
- Flip the laptop over so the underside is visible.

## Step 2



- Locate the battery lock switch.
- Slide the lock switch to the left (away from the lock symbol).
- Slide the battery out away from the laptop.

## Step 3 — Dell Inspiron 1750 Teardown




- ⓘ Separate the screws by size and head type. Be sure to keep them in a safe place.
- Remove the sixteen 2mm Phillips #00 screws from the bottom of the laptop.
- Remove the two 2mm Phillips #0 screws from the hard drive port.



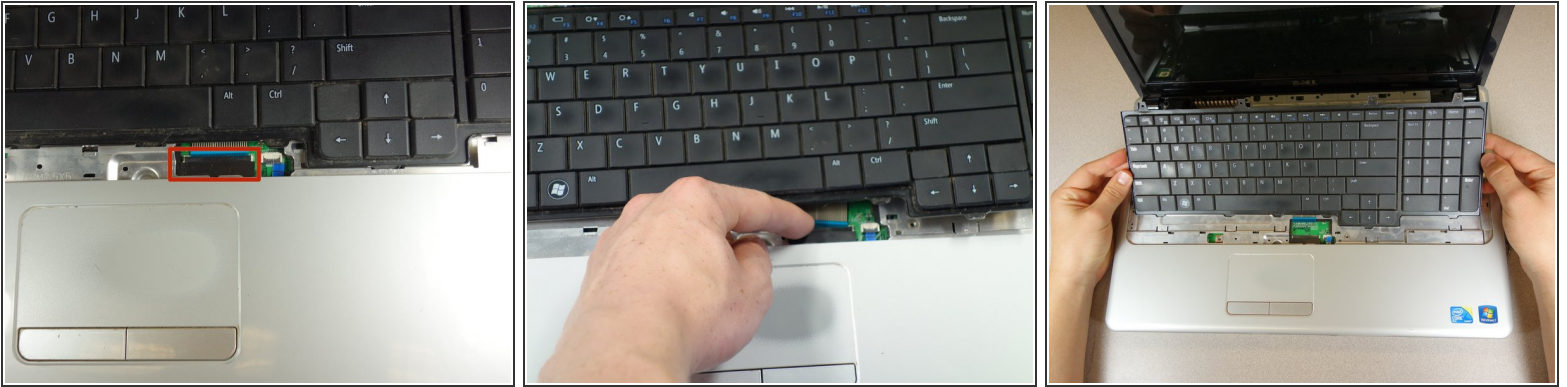
## Step 4



 Keep your hand pressed firmly on the back panel to prevent it from falling.

- Flip the laptop over horizontally and open up the lid.
- Insert the tip of the plastic opening tool into the upper left corner of the panel.
- Keeping its tip under the top panel, slide the plastic opening tool around the panel until the panel is completely loose. Next gently remove the panel.
- Remove the four 2mm Phillips #0 screws at the top of the keyboard.
- Slide the plastic opening tool around the keyboard until the keyboard is completely loose. Gently remove the keyboard.

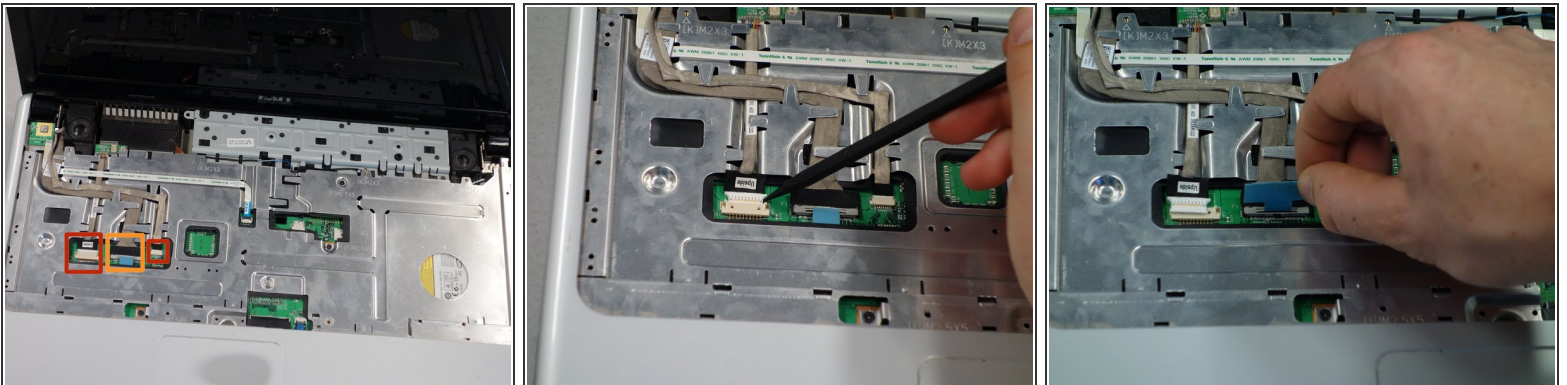
## Step 5



**⚠** Do not lift the keyboard completely free to avoid damaging its connections to the laptop interior.

- Locate the small black latch attached to blue tape.
- Lift the small latch with your finger and pull the blue tape from its port.
- Slide the keyboard away from the mousepad and set it aside.

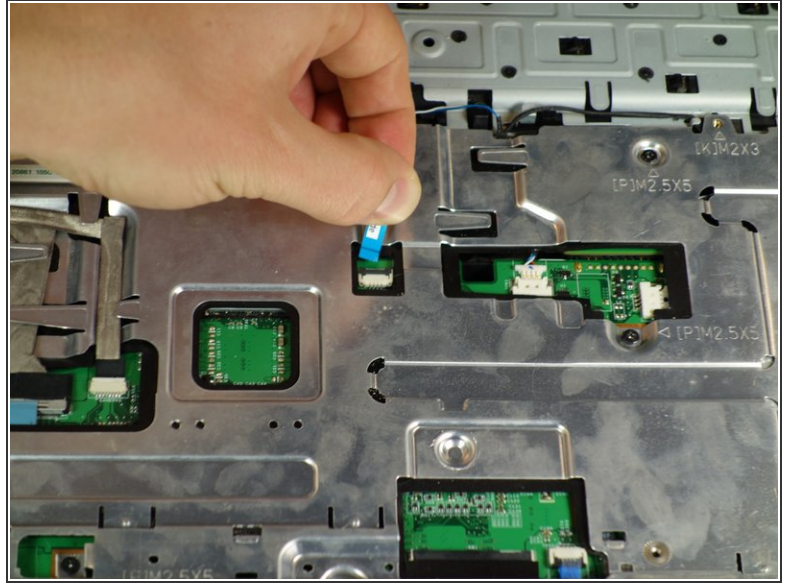
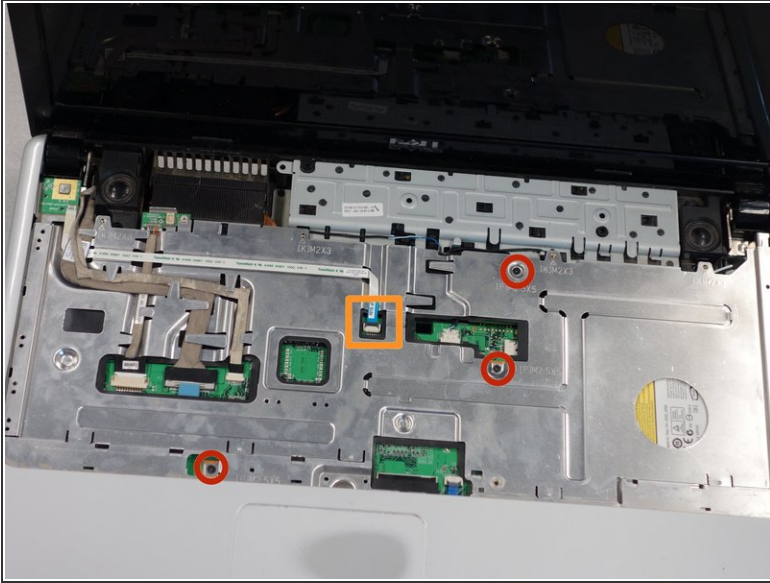
## Step 6



**⚠** Always pull wires from their plastic ends, not their cables, to avoid wire damage.

- Locate the three wires in the top left corner of the metal panel.
- Use the spudger to push the two cables out of their ports.
- Pull the blue tab directly up to remove middle wire.

## Step 7



- Remove the three 1mm Phillips #00 screws on the metal plate.
- Lift the black cover and slide the blue tab away from the cover.



## Step 8




 Always pull wires from their plastic ends, not their cables, to avoid wire damage.

- Gently remove the three grey wires from the metal tabs.
- Insert the tip of the plastic opening tool into the bottom left corner of the panel.
- Keeping its tip under the top panel, slide the plastic opening tool around the panel until the panel is completely loose.
- Gently lift off the top metal panel.

## Step 9 — Screen



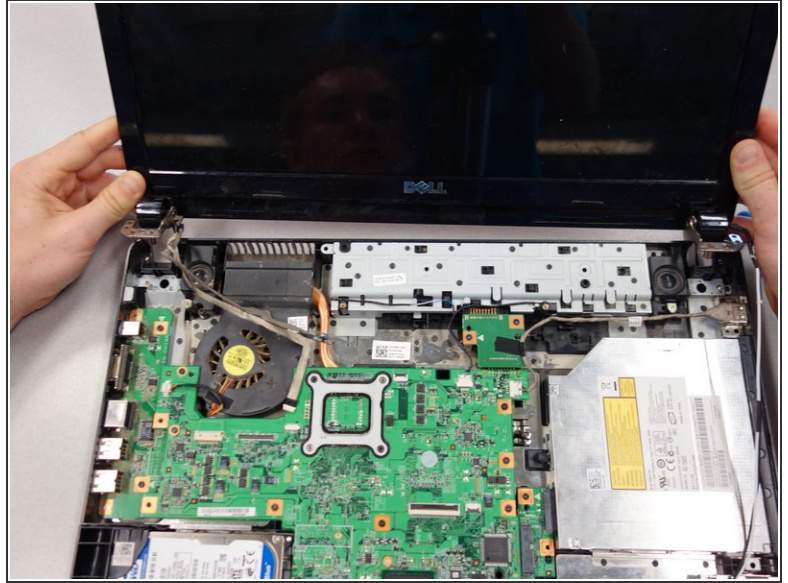
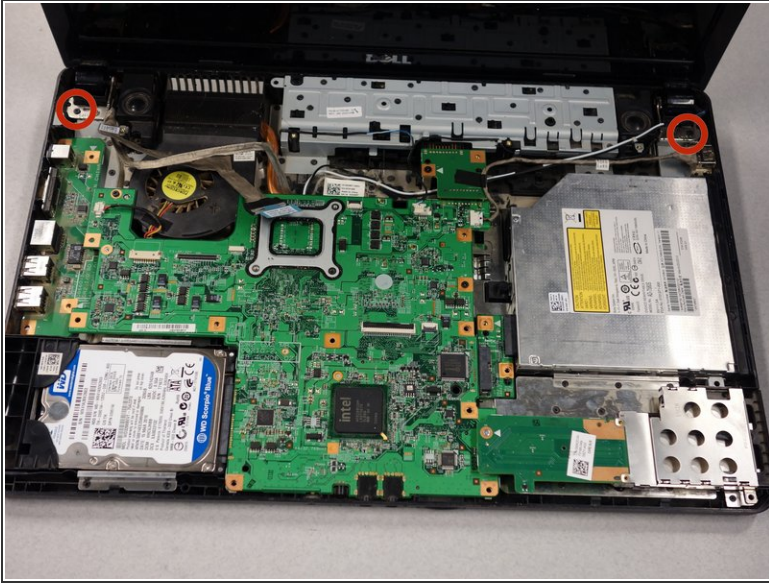
- Use the spudger to lift the wires from their connections.

 Remember to pull wires from their plastic ends, not their cables, to avoid wire damage.

- Flip the laptop over and pull the connections through until they are free from the laptop interior.

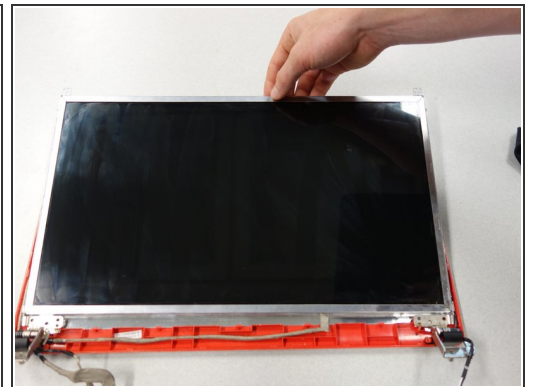
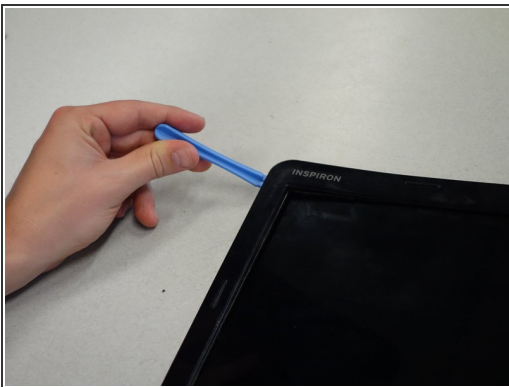


## Step 10



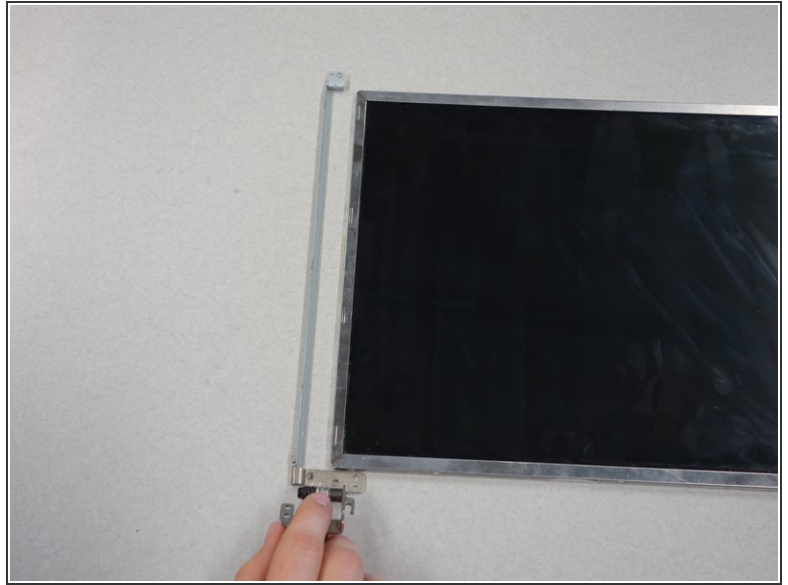
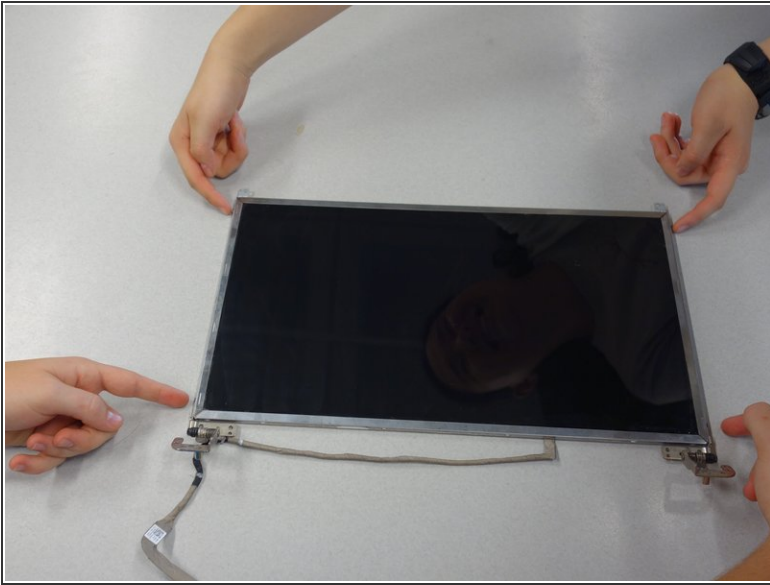
- Remove the two 2mm Phillips #0 screws from the screen hinges.
- Lift the screen away from the laptop and gently set it down.
- Put the rest of the laptop aside.

## Step 11



- Use the plastic opening tool to remove the plastic cover from the screen.
- Remove the eight 2mm Phillips #0 screws from the corners of the screen.
- Lift the screen away from the back panel.

## Step 12



- Remove the four 2mm Phillips #0 screws from the sides of the screen.
- Remove the side railings from both sides of the screen by pulling the railings gently away from the screen.

To reassemble your device, follow these instructions in reverse order.