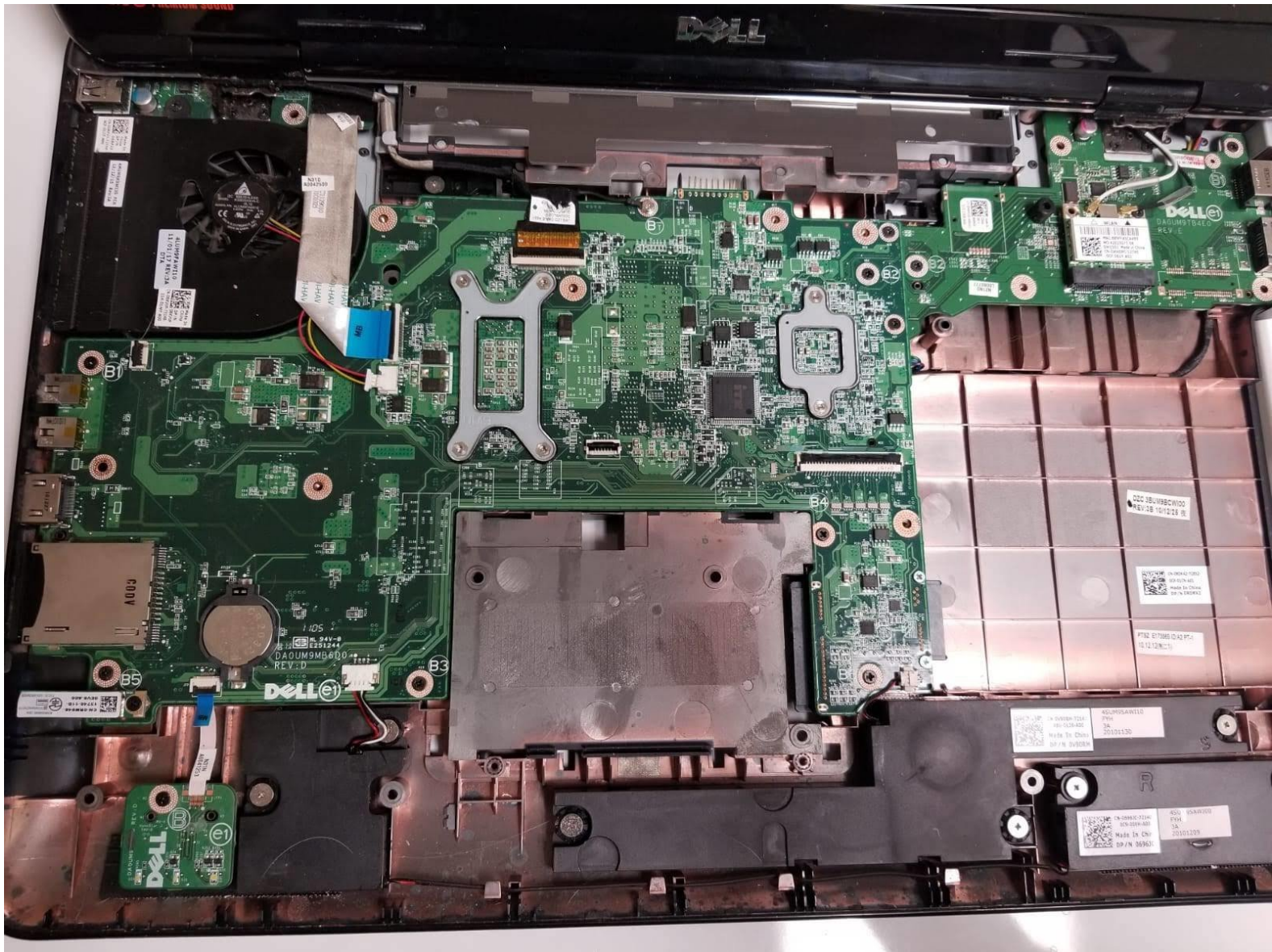




Dell Inspiron 17R-N7010 Palm Rest Replacement

This guide will serve as a prerequisite for the following guides: motherboard, fan, processors. This guide also will help disassemble the laptop.

Written By: Brandon Lopez



This document was generated on 2020-04-04 06:45:25 AM (MST).

INTRODUCTION

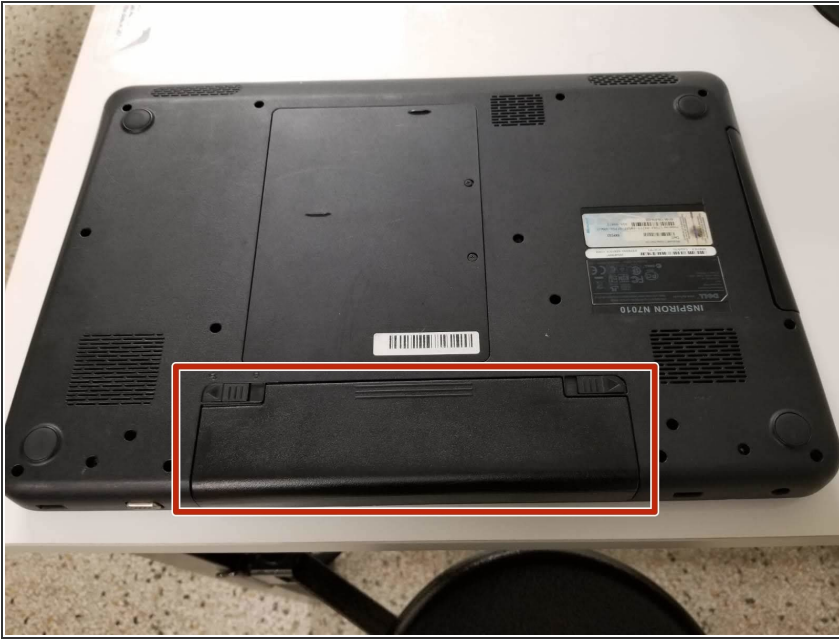
This guide will cover how to replace the palm rest component of a Dell Inspiron 17R-N7010 computer as well as how to access internal components for other repairs or replacements.



TOOLS:

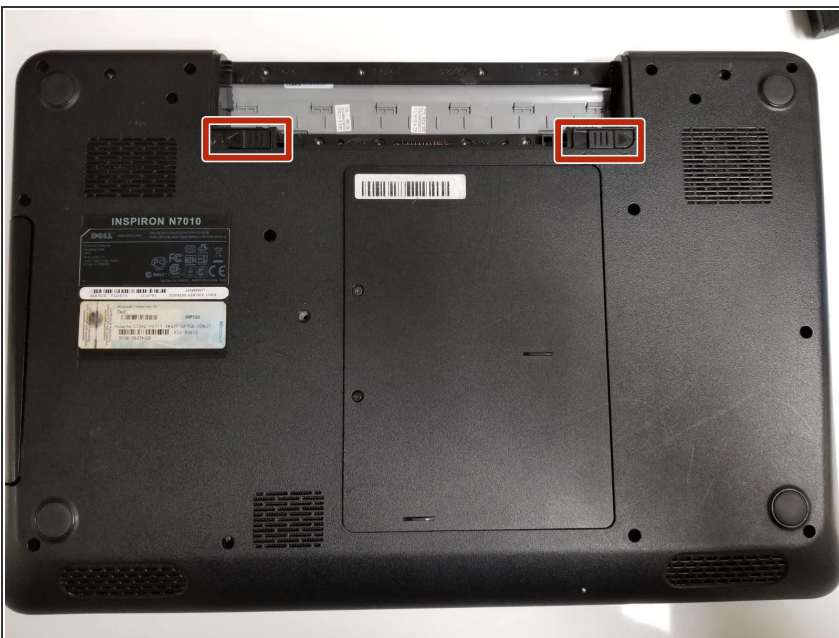
- [Spudger](#) (1)
 - [Phillips #0 Screwdriver](#) (1)
-

Step 1 — Battery



- ⚠ Power off the laptop before continuing disassembly.
- Flip the laptop over and locate the battery compartment.

Step 2



- To remove the battery, slide both locks away from the center of the battery.
- After a click is heard, the battery can then be pulled out.
- ★ To reinstall the battery, slide the battery back into place in the same orientation you had removed it. Push it into place until you hear a click.

Step 3 — Palm Rest



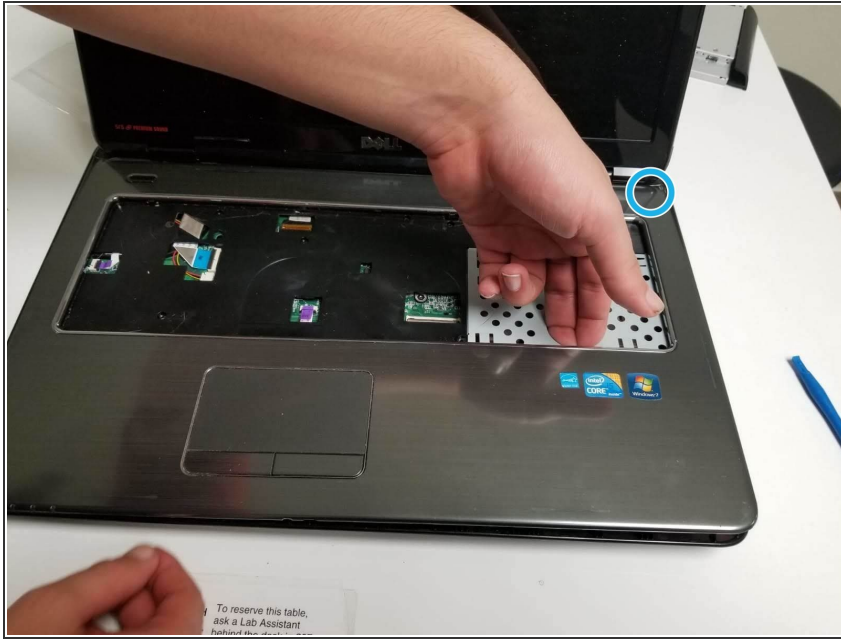
- Still looking at the back of the laptop, locate and unscrew the four screws highlighted in green.
- Flip the laptop over and open it to view the face of the keyboard.
- ❗ The keyboard is connected to the laptop by a thin wire marked in blue. To disconnect the keyboard from the laptop, lift up the latch holding the wire in place. This latch is boxed in blue.

Step 4



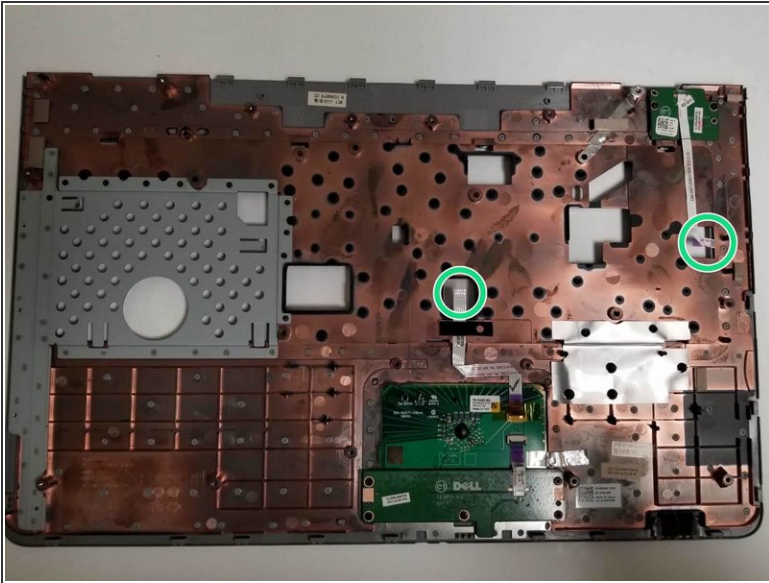
- Close the laptop again, flipping it back over to view the back once more. To remove the back cover, locate and unscrew the two screws marked in green.
- Following this, slide the CD drive out in order to locate and access the final three screws, which are marked in red.
- Remove these three screws.


Step 5



- i** This step may be tricky, and might feel like you are breaking the laptop. Following these steps carefully will ensure a safe disassembly of the device without damaging the hardware.
- To safely remove the top cover, insert a spudger underneath the grey surface where the blue circle is shown. Pry upwards with the spudger in order to detach the locks.
- Work clockwise starting from the indicated blue circle, inserting the spudger under the grey cover and lifting up in order to detach the locks.

Step 6



 Disconnect the wires circled in green before completely removing the top cover.

- Remove the cover to access the inner hardware of the laptop: motherboard, fans, processors, et cetera.

To reassemble your device, follow these instructions in reverse order.