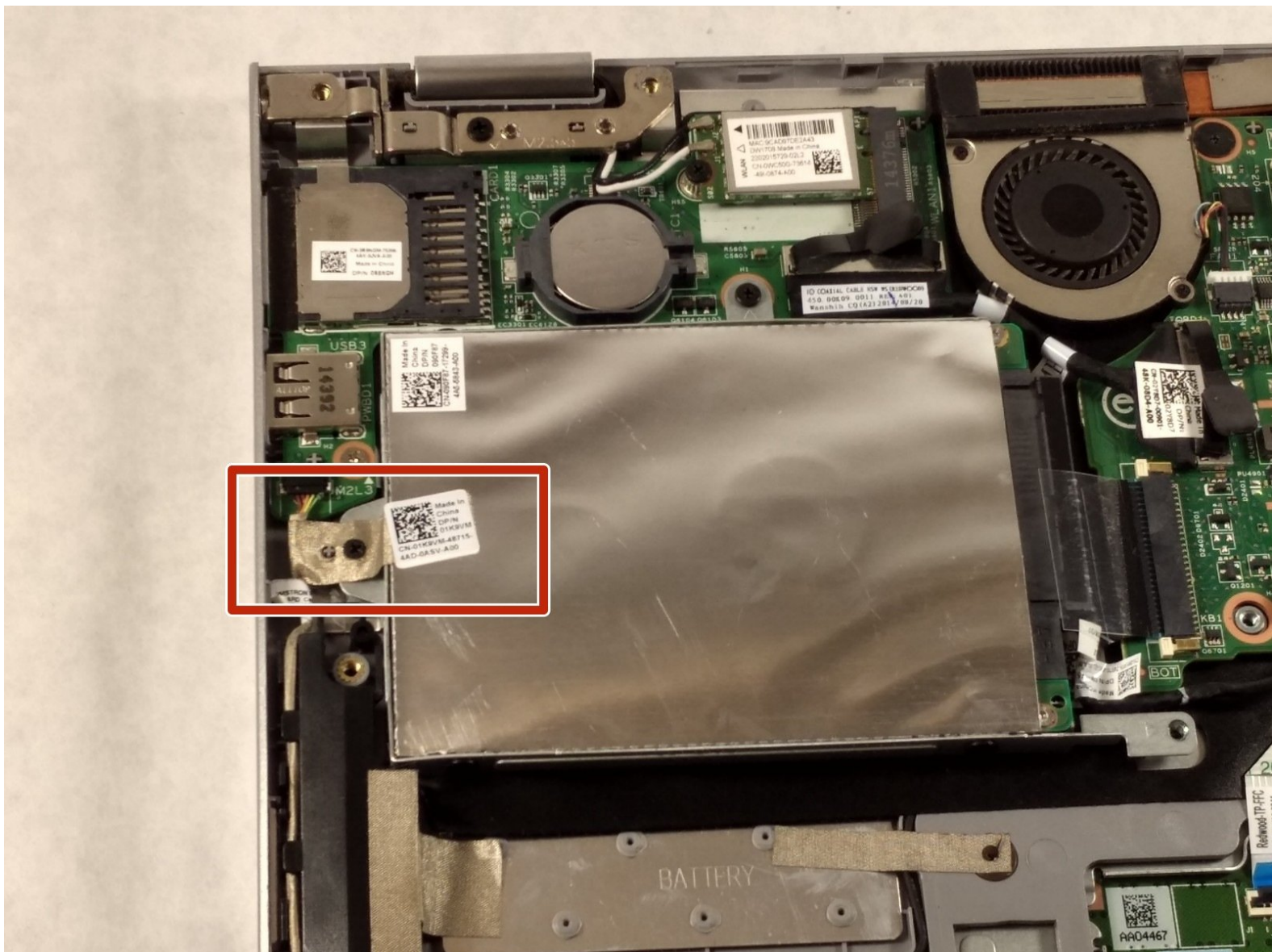




Dell Inspiron 3148 Hard Drive Replacement

Use this guide to remove or replace the hard drive in your Dell Inspiron 3148.

Written By: Christopher Gravelle



INTRODUCTION

Are you experiencing problems with loading files and other applications on your computer? Consider using this guide to replace the hard drive.

TOOLS:

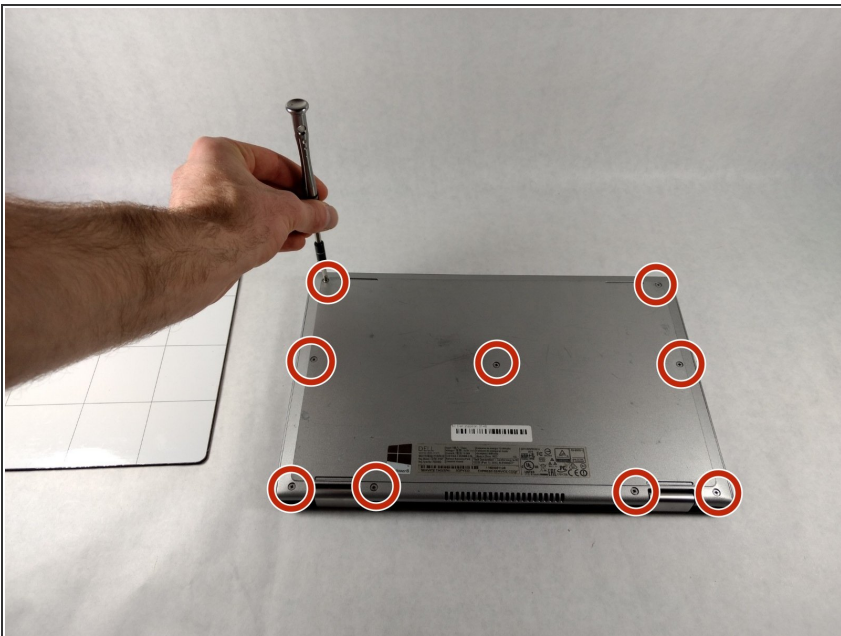
- [Phillips #1 Screwdriver](#) (1)
 - [iFixit Opening Tools](#) (1)
 - [Phillips #0 Screwdriver](#) (1)
-

Step 1 — Back Panel



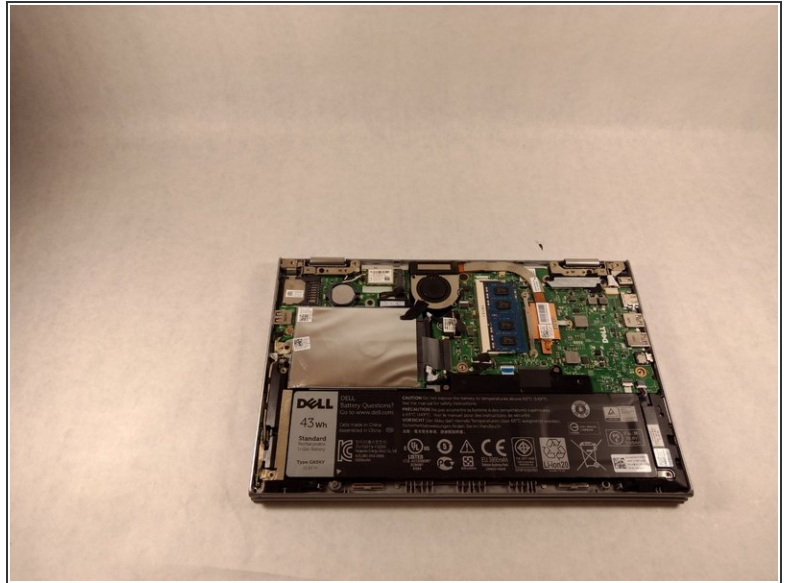
- Ensure the device is powered off and unplugged. Close the device and orient it face up, with the hinges further away from you.
- Flip the device over so the backside is facing you.

Step 2



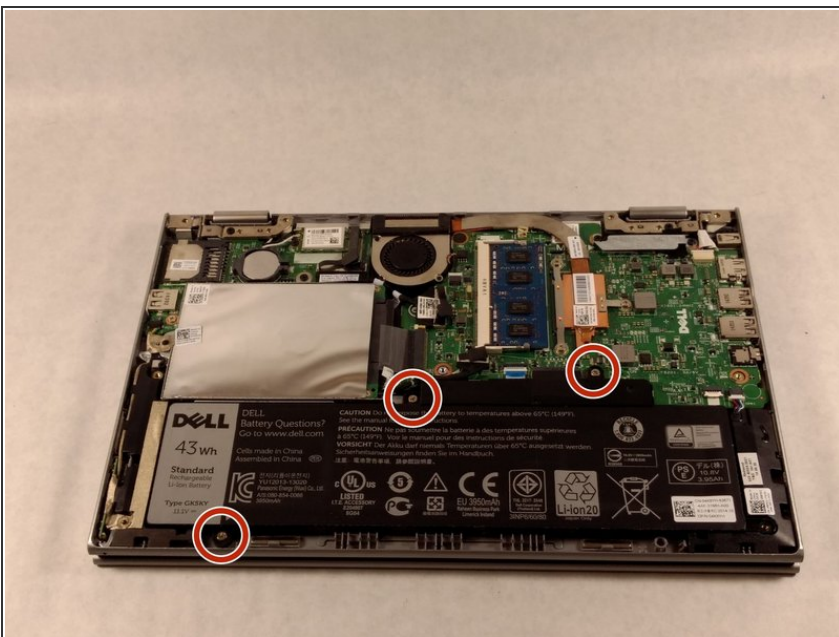
- Using the Phillips #1 screwdriver, remove all nine 7mm screws.

Step 3



- Using the plastic opening tool, pull the back panel upward. Move the opening tool along the edge of the device and lift the panel off of your device.
- ⓘ Be aware, the back panel is kept in place by magnetic clips. They will offer some resistance, but continue to gently leverage upwards.

Step 4 — Battery



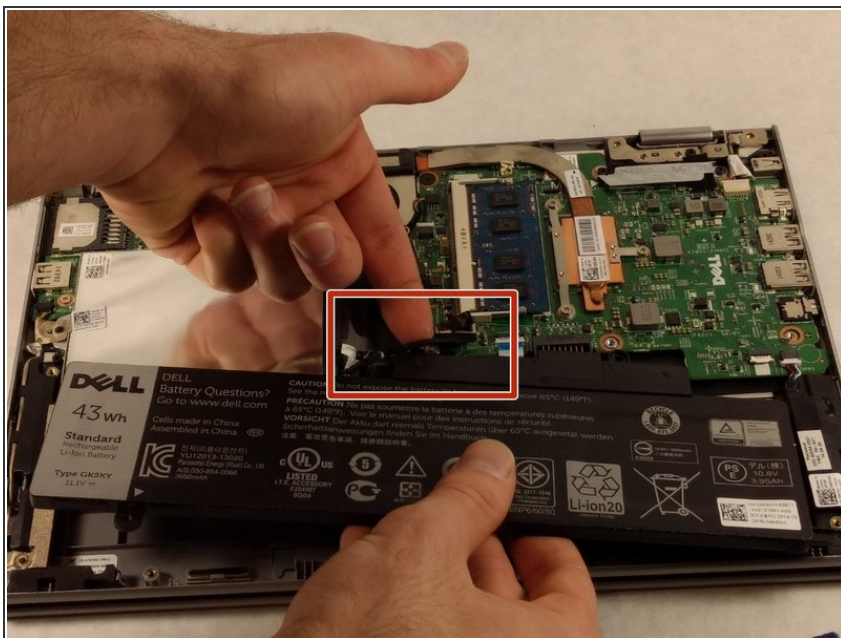
- Remove the three 4mm screws holding battery in place using the Phillips #0 screwdriver.

Step 5



- Using the iFixit opening tools, lift the battery out of its housing.

Step 6



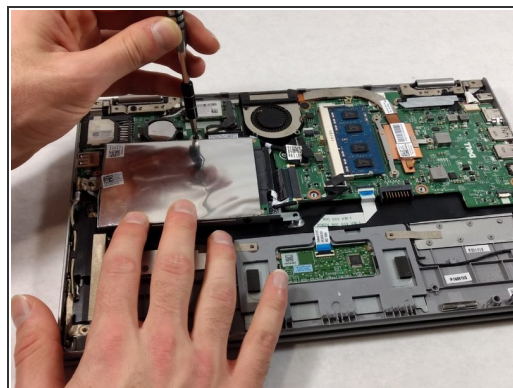
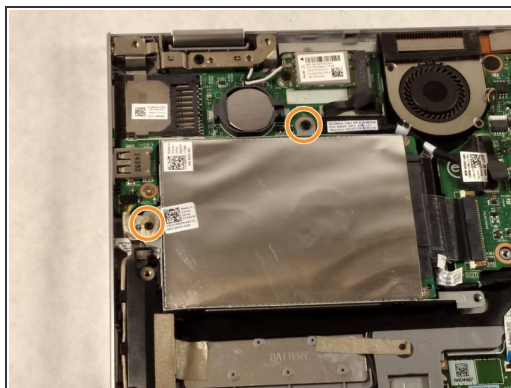
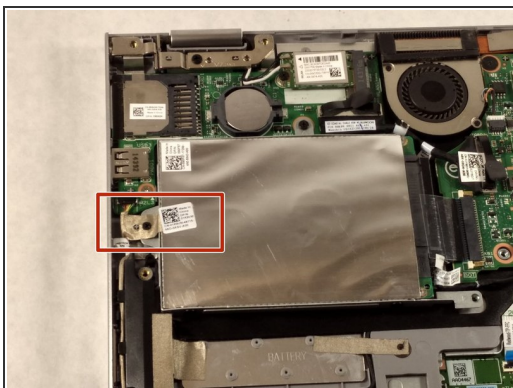
- Once loosened, use your fingers to lift the battery up and out of its housing.
- ⚠ There is a small cable which sits in a rut in the top of the battery. Ensure that it is pushed out of the way before removing completely.

Step 7



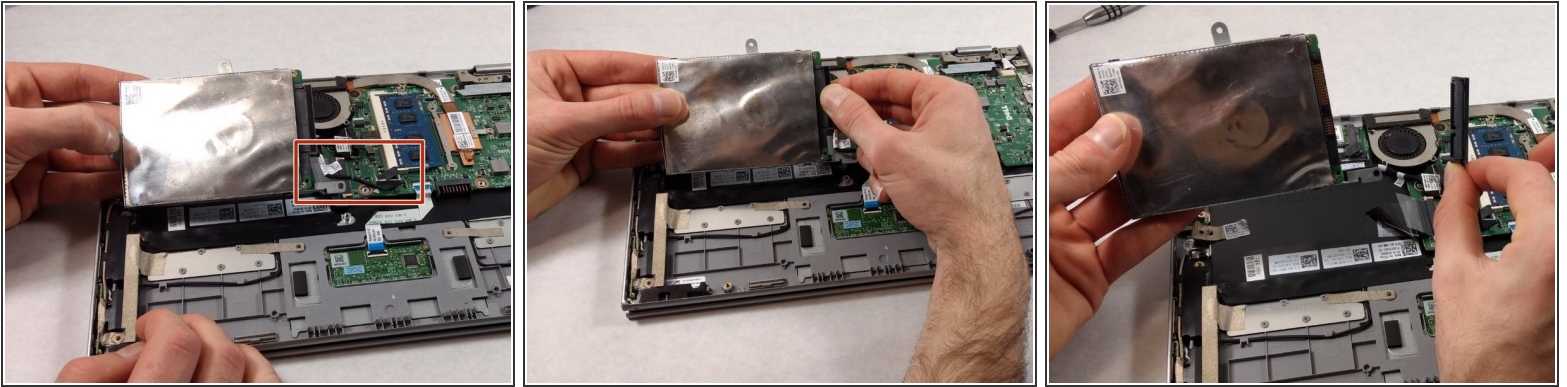
- Remove the battery completely.


Step 8 — Hard Drive



- If there is a piece of tape connecting the hard drive and a small power cord, remove the tape.
- Using the Phillips #0 screwdriver, remove the two 4mm screws.

Step 9



 Notice: there is a small data cable connecting the hard drive to the motherboard. Do not attempt to lift the hard drive all the way out before removing this cable.

- Lift the hard drive slightly out of the device.
- Grasp the head of the cable, not the cable itself.
- Pull away from the hard drive, removing the data cable. The hard drive may now be fully removed.

To reassemble your device, follow these instructions in reverse order.