



# Dell Inspiron 3148 WLAN Card Replacement

Use this guide to replace the WLAN card in your Dell Inspiron 3148.

Written By: Christopher Gravelle



# INTRODUCTION

Is your computer experiencing problems with connecting to the Wi-Fi or the internet? Consider using this guide to replace the WLAN card in your device.



## TOOLS:

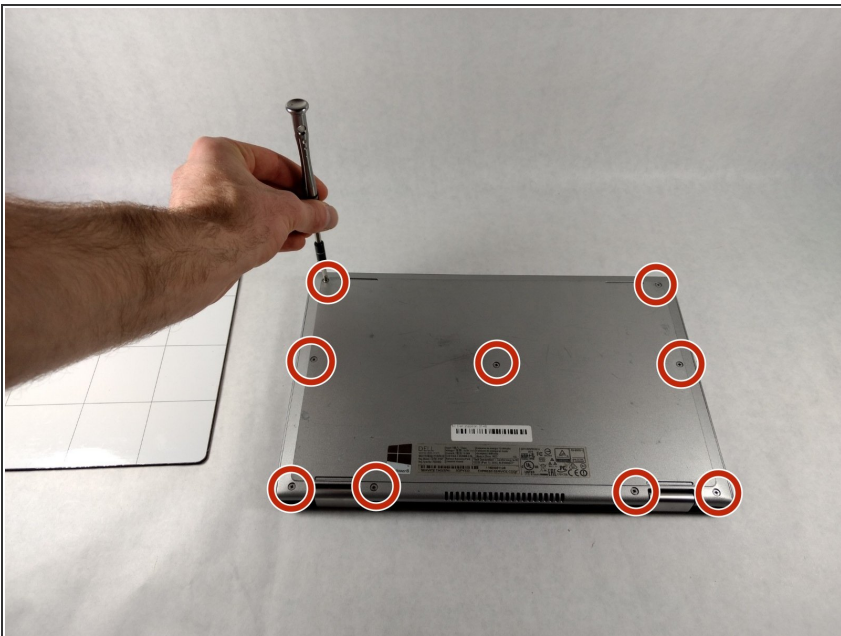
- [Phillips #1 Screwdriver](#) (1)
  - [iFixit Opening Tools](#) (1)
  - [Phillips #0 Screwdriver](#) (1)
-

## Step 1 — Back Panel



- Ensure the device is powered off and unplugged. Close the device and orient it face up, with the hinges further away from you.
- Flip the device over so the backside is facing you.

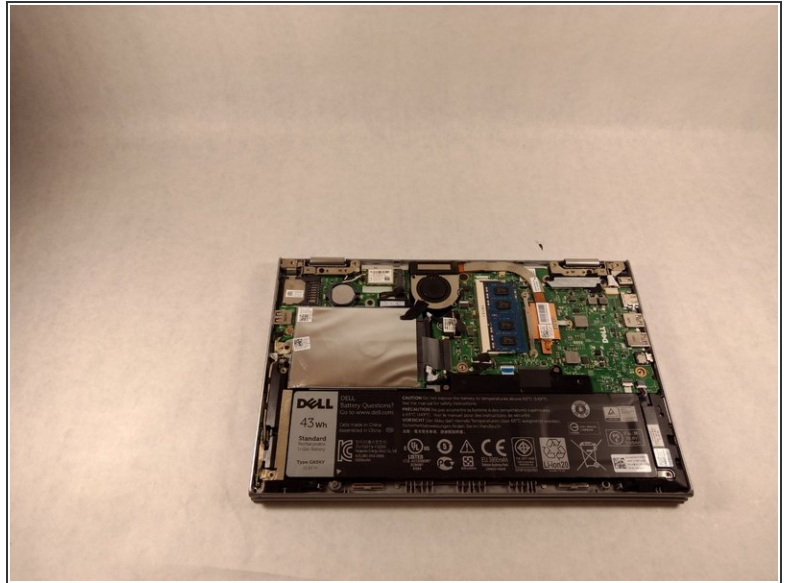
## Step 2



- Using the Phillips #1 screwdriver, remove all nine 7mm screws.



### Step 3



- Using the plastic opening tool, pull the back panel upward. Move the opening tool along the edge of the device and lift the panel off of your device.
- ⓘ Be aware, the back panel is kept in place by magnetic clips. They will offer some resistance, but continue to gently leverage upwards.

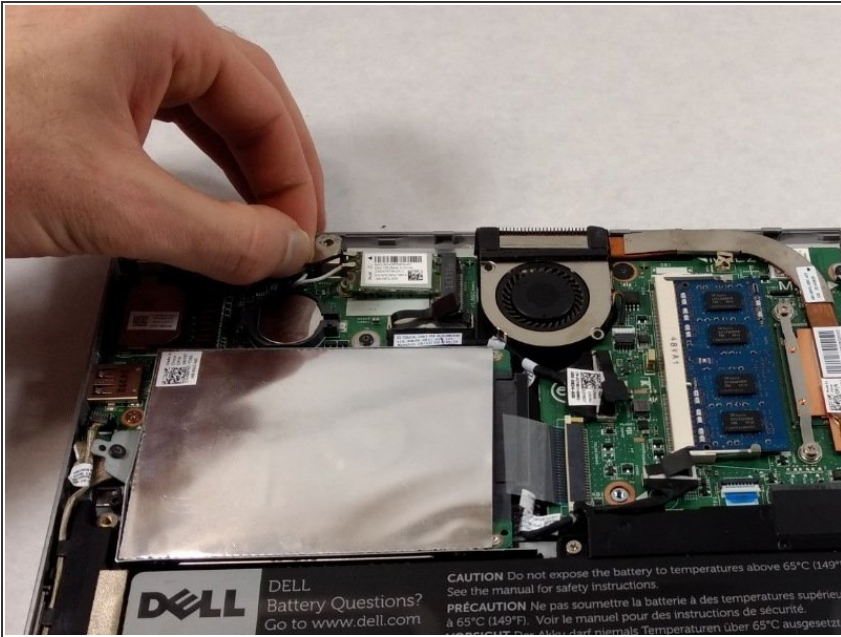
### Step 4 — WLAN Card



- Locate the WLAN chip. It is a small wireless network card with two small cables connected to it, one black and one white.
- Using a Phillips #0 screwdriver, remove the single 2mm screw from the WLAN card.
- ⓘ The card should pop right up once the screw is removed.

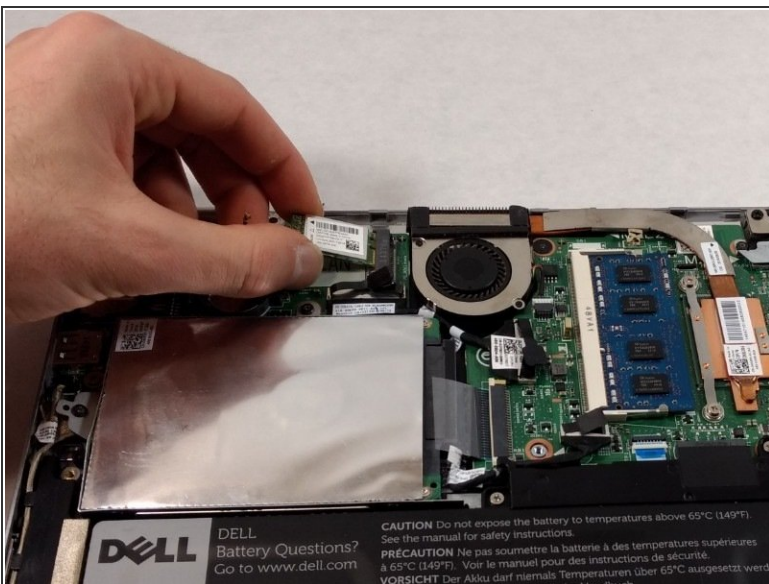
This document was generated on 2020-04-04 06:54:30 AM (MST).

## Step 5



- Remove the two wires by pulling them upward, away from the WLAN card.

## Step 6



- Using your fingers, pull the WLAN card up and away from the device.

To reassemble your device, follow these instructions in reverse order.