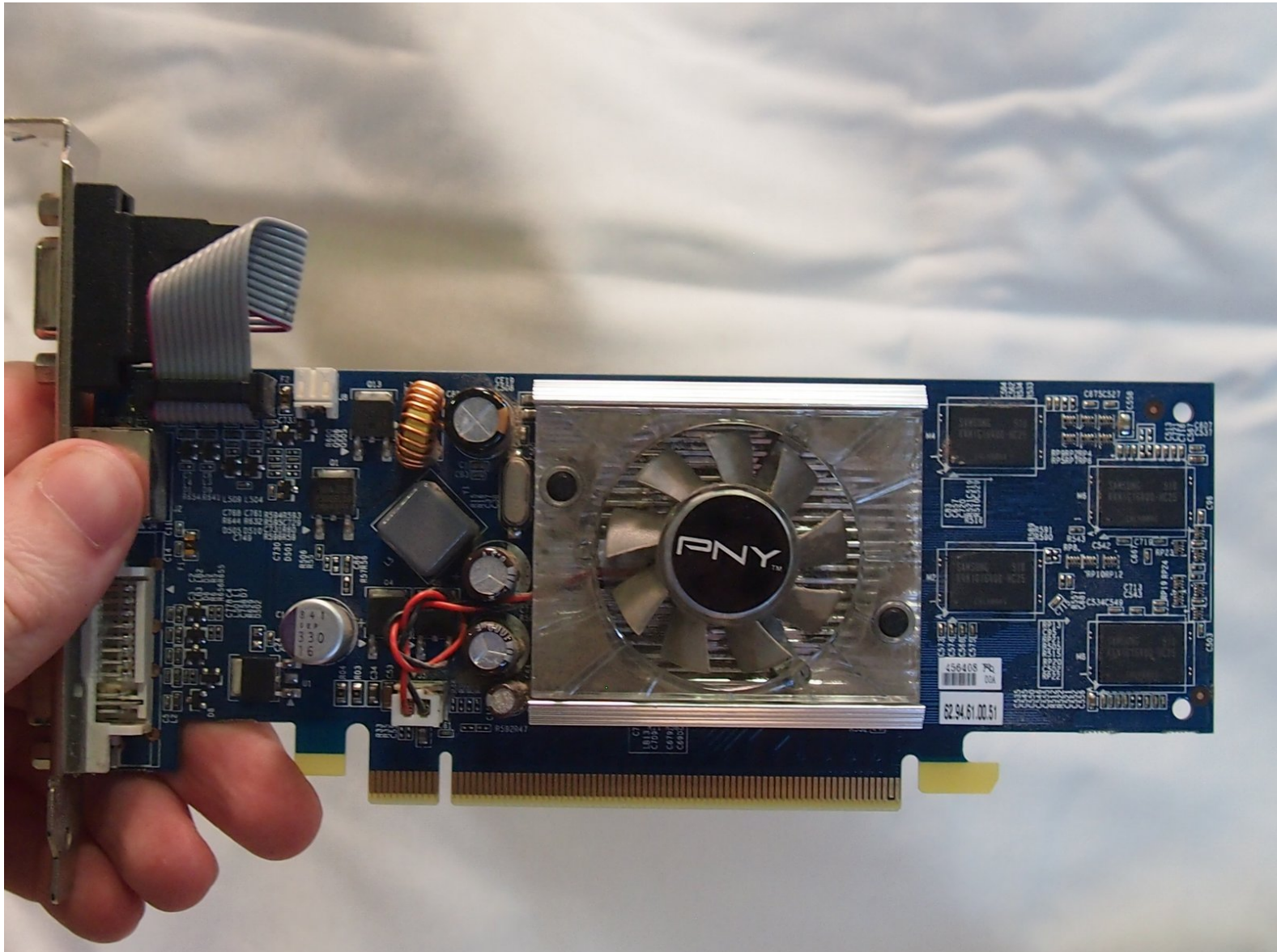




Dell Inspiron 530 DCMF Graphics Card Replacement

This guide will show you how to replace the graphics card.

Written By: Drew Cunningham



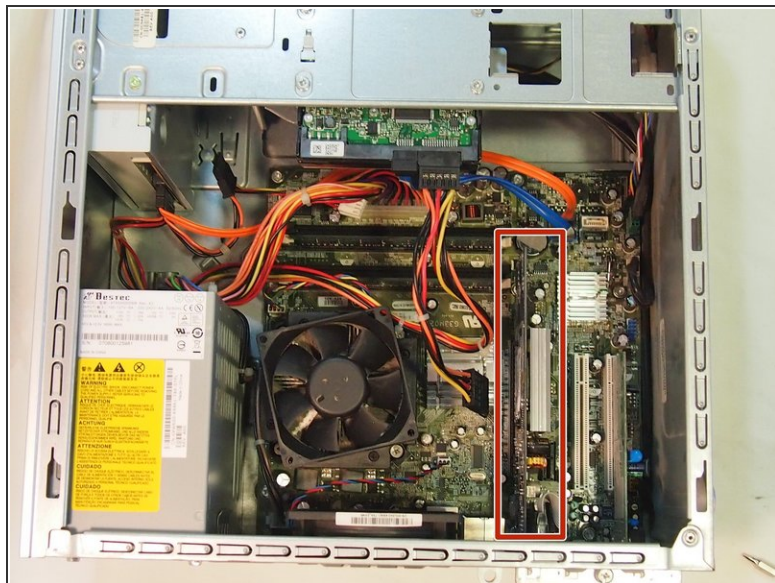
INTRODUCTION

To replace the graphics card, the existing one must first be unplugged and removed from the computer. After this is done, then a new one can be installed.

TOOLS:

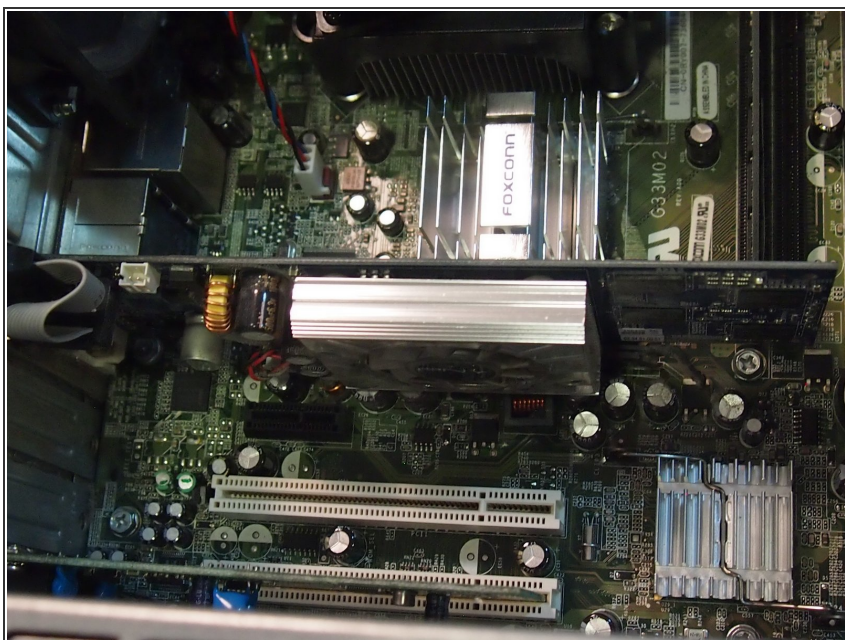
- [Screwdriver](#) (1)
-

Step 1 — Graphics Card



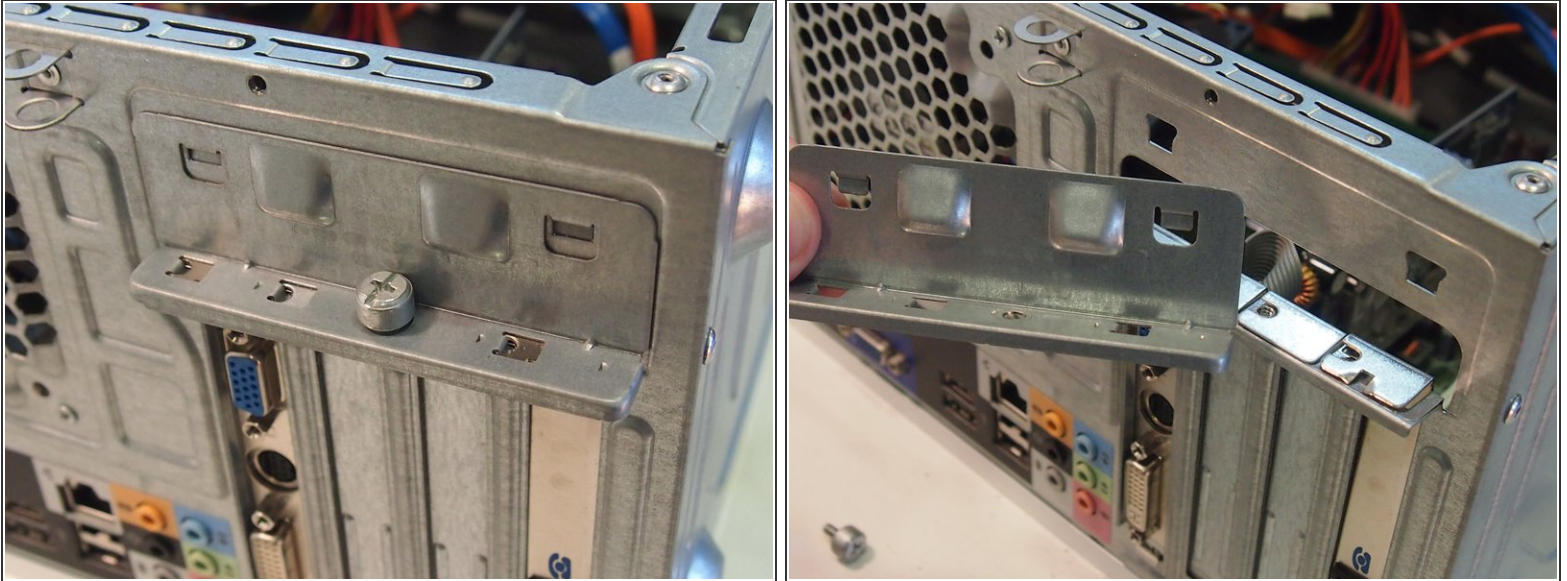
- To access the graphics card, it is necessary to open the computer case. To do this, unscrew the marked screws and then slide the panel back.

Step 2



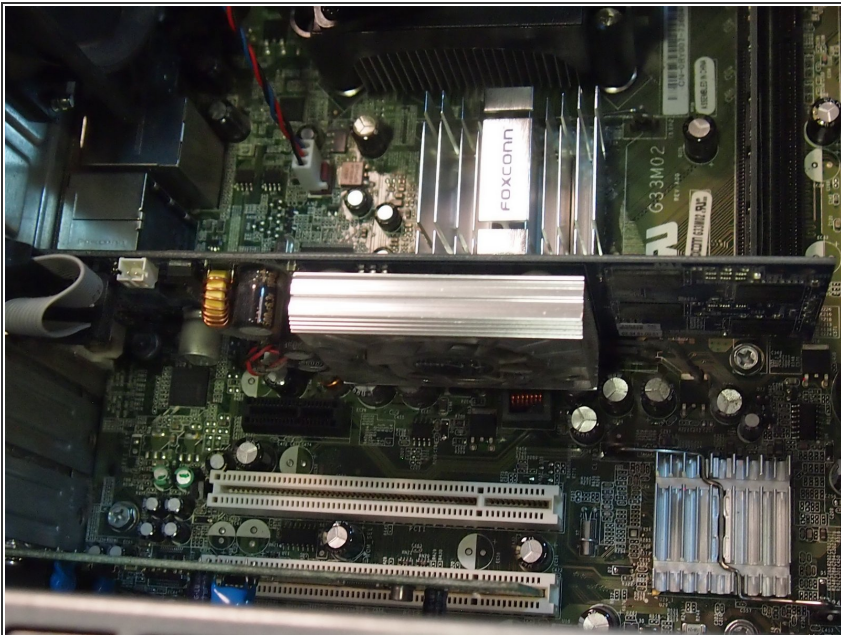
- Locate the graphics card. It can be identified by its position on the motherboard and built-in fan.

Step 3



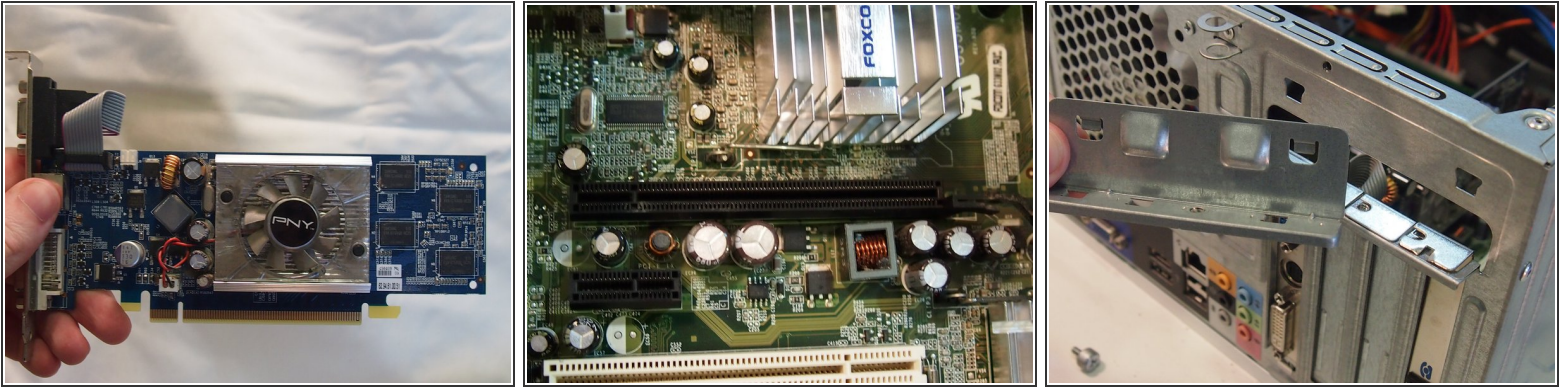
- Unscrew the following shown screw to remove the metal piece that holds the graphics card in place.

Step 4



- The graphics card can now be taken out by sliding it upwards.

Step 5



- After the previous graphics card has been taken out, the new graphics card can now be inserted. Remember to not forget to secure the card with the metal guard that was removed earlier.

To reassemble your device, follow these instructions in reverse order.