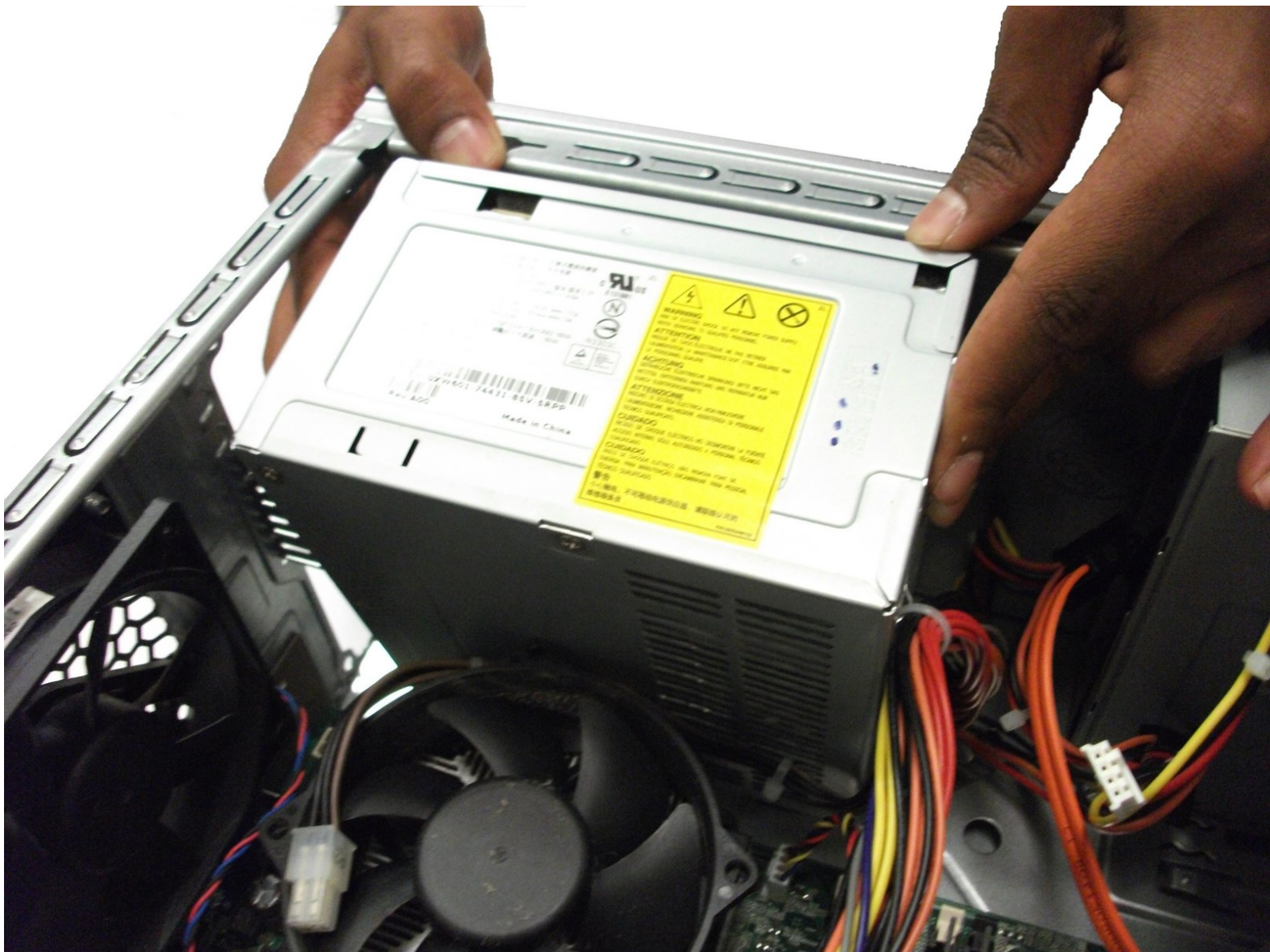




Dell Inspiron 530 Power Supply Replacement

Removing the computer's power supply unit

Written By: Doug Howe



INTRODUCTION

This guide will demonstrate removing the computer's power supply.



TOOLS:

- [Phillips #0 Screwdriver](#) (1)
-

Step 1 — Case



- Place the case on its side.
- Locate and remove the two 13.1 mm thumbscrews.

Step 2



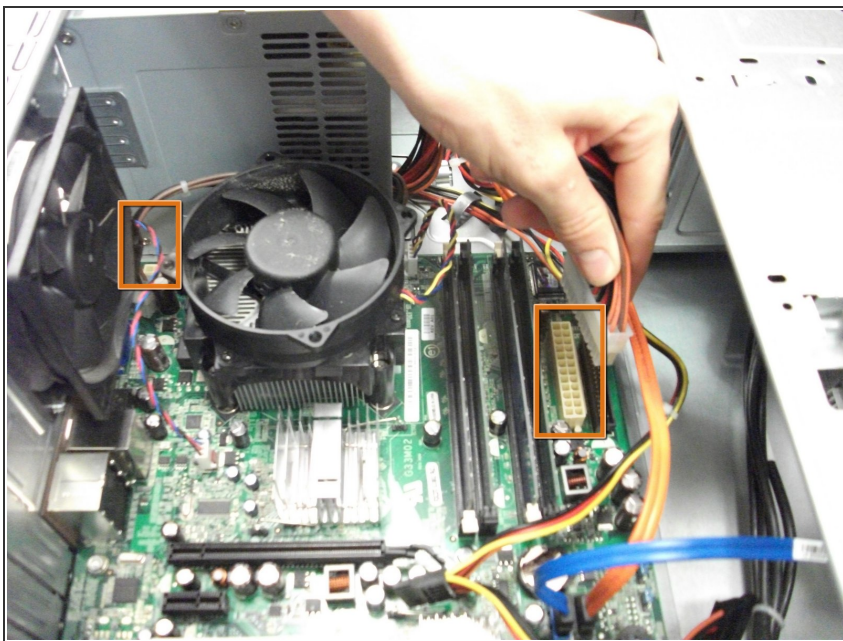
- Slide the side panel towards the back and remove.

Step 3 — Power Supply



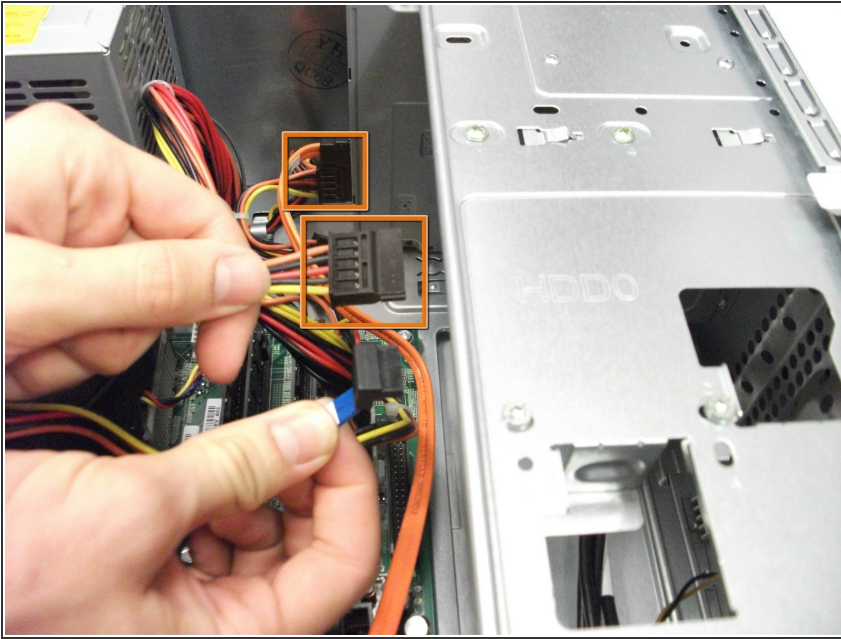
- Locate the power supply in upper-back corner of the case.

Step 4



- Remove the two power cables from the motherboard.

Step 5



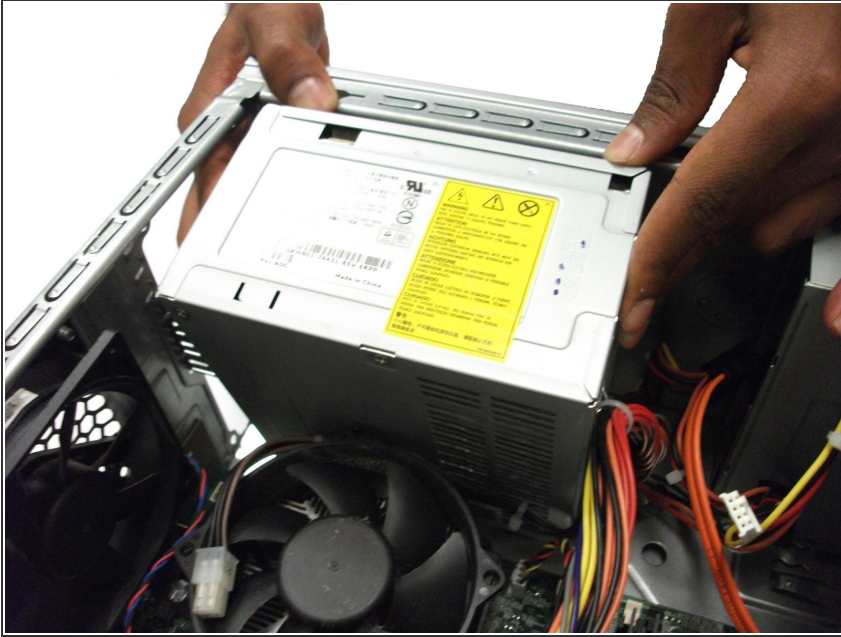
- Remove the power cables from the CD/DVD drive and hard drive.

Step 6



- Locate and remove the four Philips #0 8.9 mm screws on the outside of the case.

Step 7



- Gently remove the power supply from the case.

To reassemble your device, follow these instructions in reverse order.