



Dell Inspiron 531 Graphics Card Replacement

Replace the graphics card in your Dell Inspiron 531 desktop.

Written By: Scott Havard



INTRODUCTION

Are you trying to enhance your Dell Inspiron's graphics capabilities? Use this guide to replace your graphics card and let the visual splendor begin.

TOOLS:

- [Phillips #0 Screwdriver](#) (1)

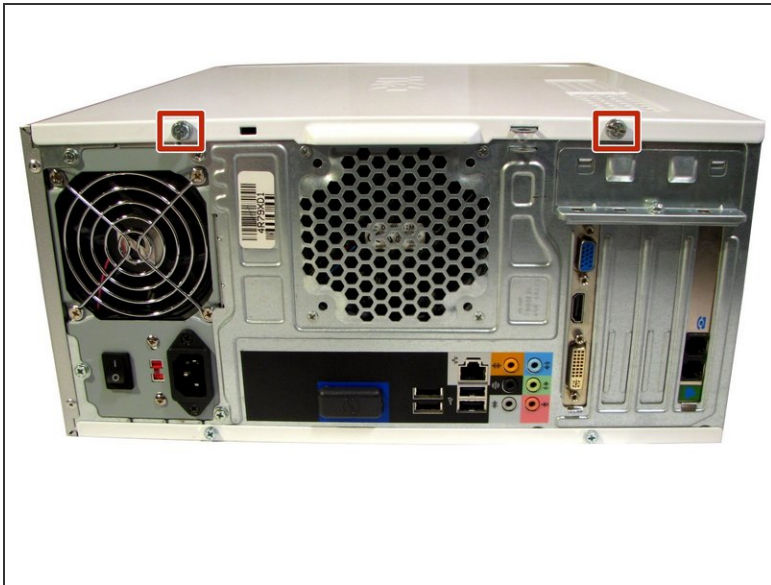
- [M3 Hex Nut Standoff Driver](#) (1)

This driver is optional. It can be used to remove the Hex Nut Standoffs that hold the VGA and DVI adaptors into place.

- [Large Needle Nose Pliers](#) (1)

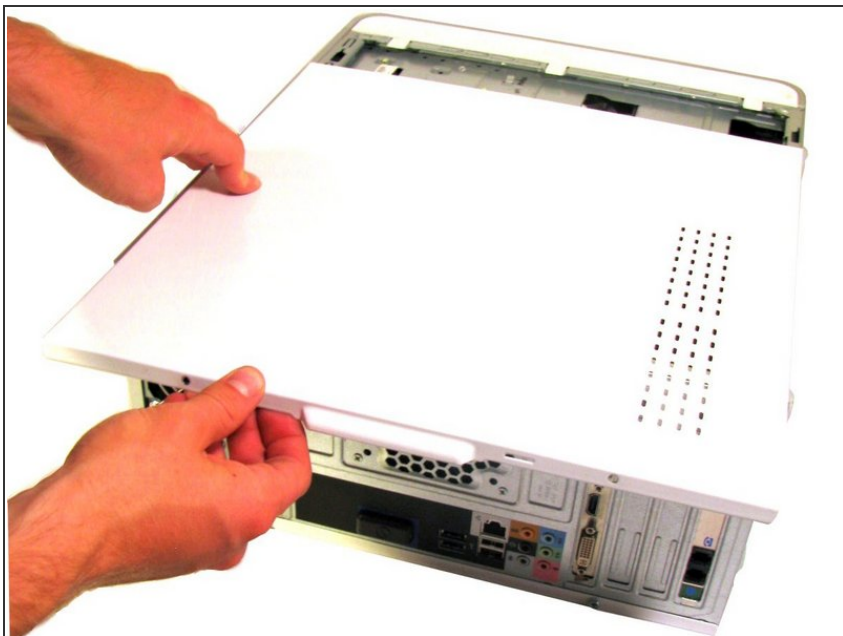
The pliers can be used to remove the hex nut standoffs that hold the VGA and DVI adaptors into place. This replaces the M3 Hex Nut Standoff Driver.

Step 1 — Side Panel



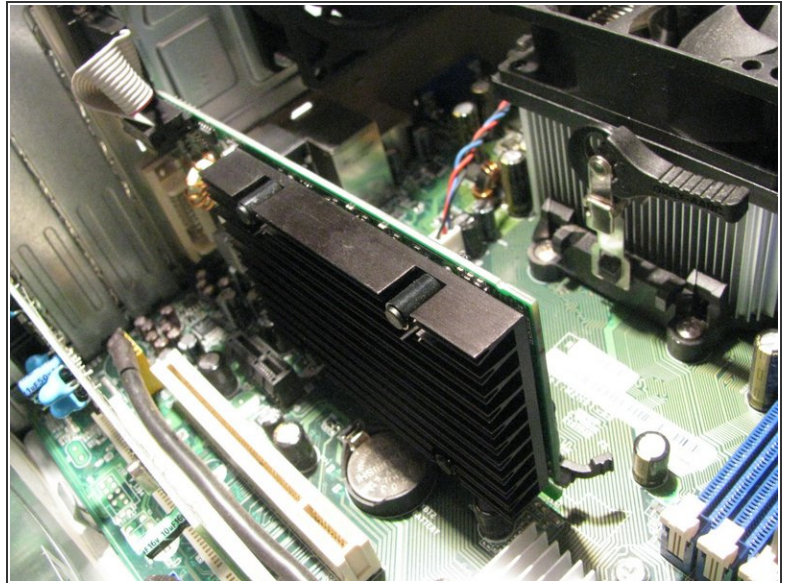
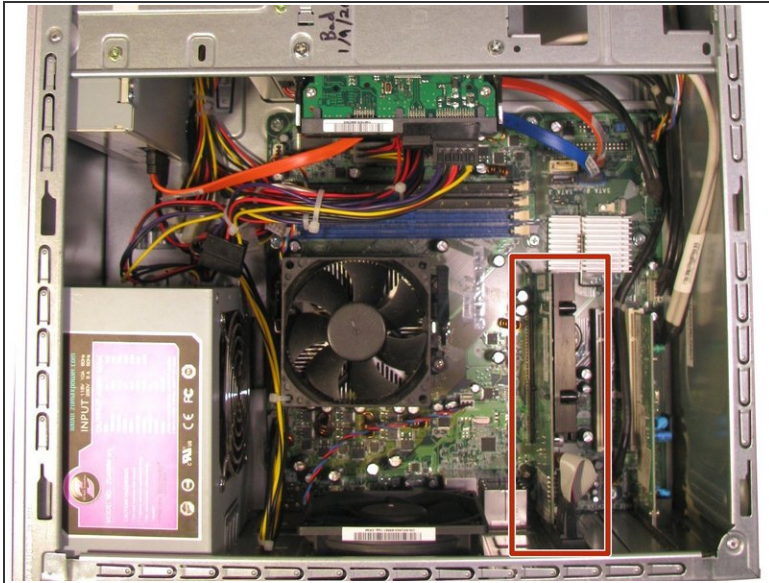
- Place the desktop on its side. Make sure to place the computer on a soft but firm surface.
- Locate and remove the two screws that secure the side panel to the desktop:
 - Two 1/4" Phillips/slotted combination screws.

Step 2



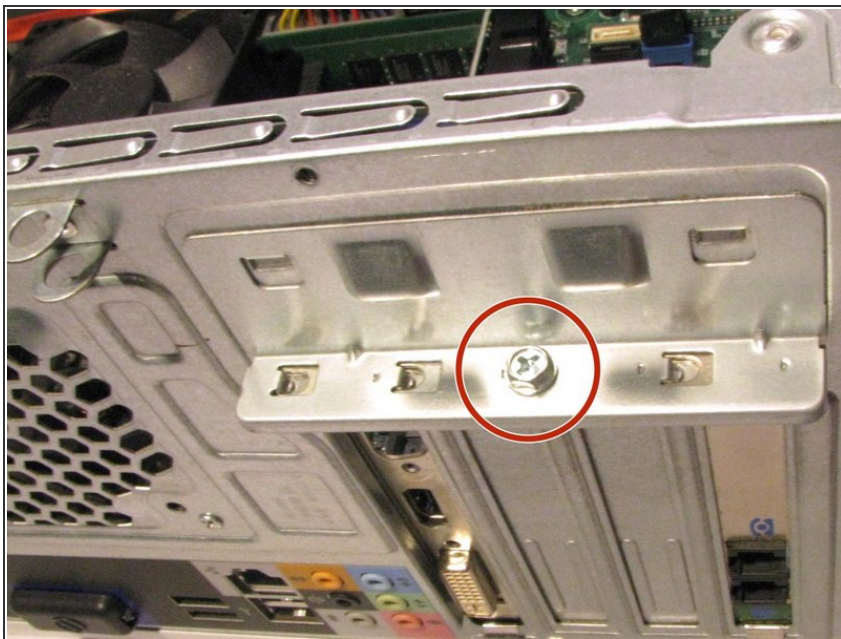
- Slide the side panel towards the back of the desktop in order to remove it.

Step 3 — Locating the Graphics Card



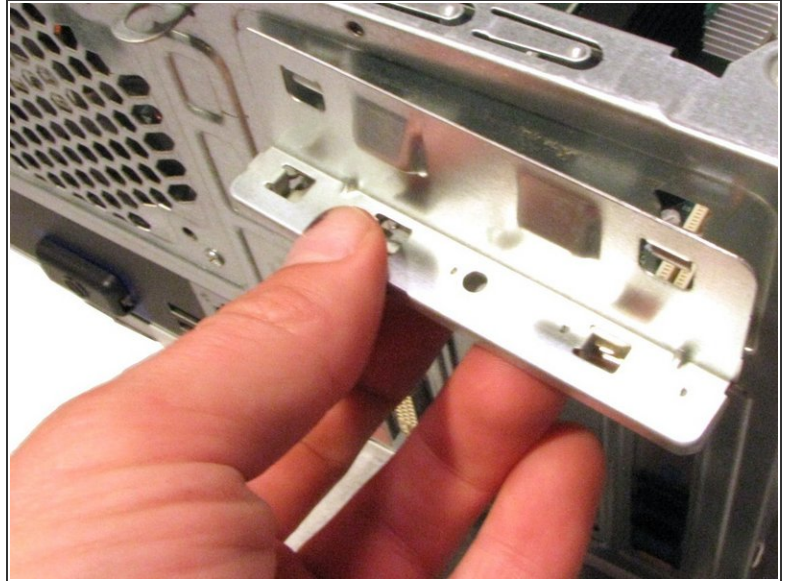
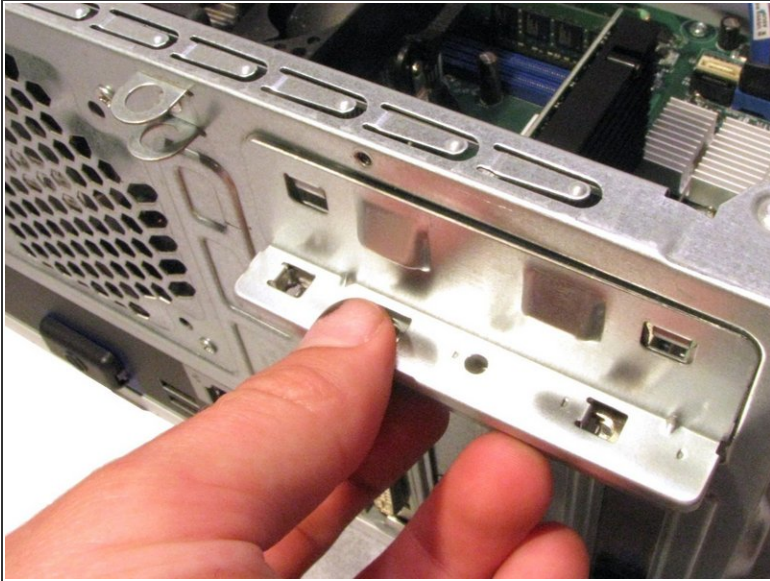
- The graphics card is attached to the back of the desktop.
- ⓘ The graphics card is located below the three fans.

Step 4 — Support Bracket



- Remove the screw that secures the support bracket:
 - One 1/4" Phillips screw

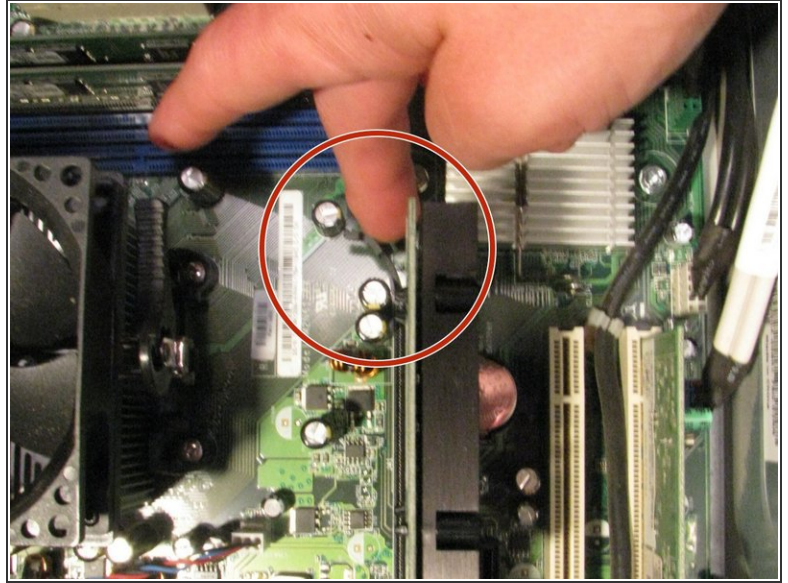
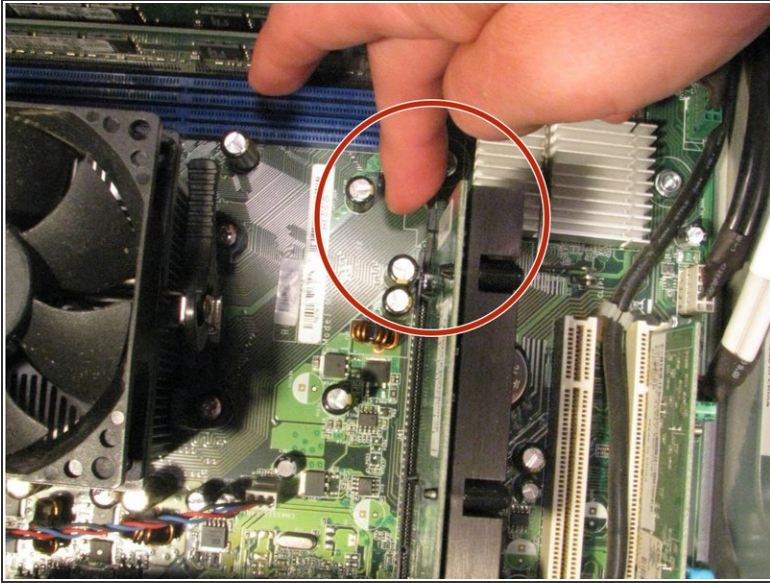
Step 5



- Remove the support bracket by lifting up and out.

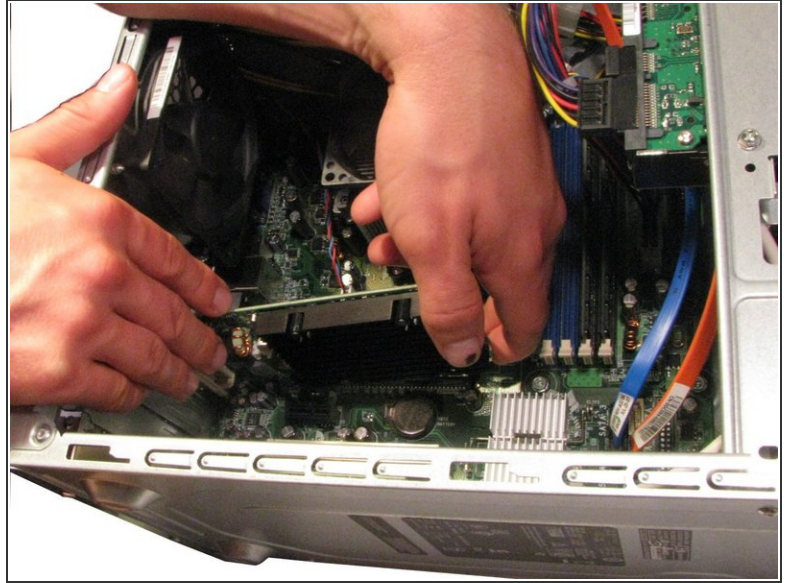
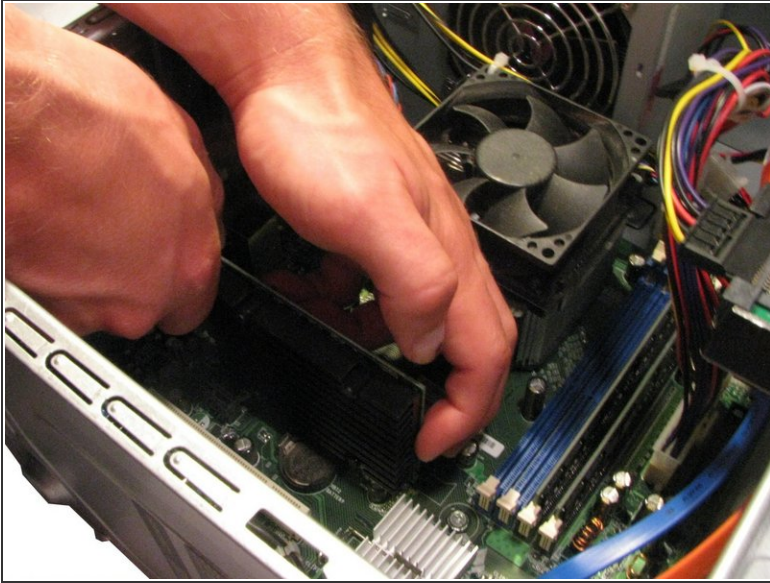
⚠ There are tabs that hold the bracket in place, therefore lifting up is an important detail.

Step 6 — Removing the Graphics Card



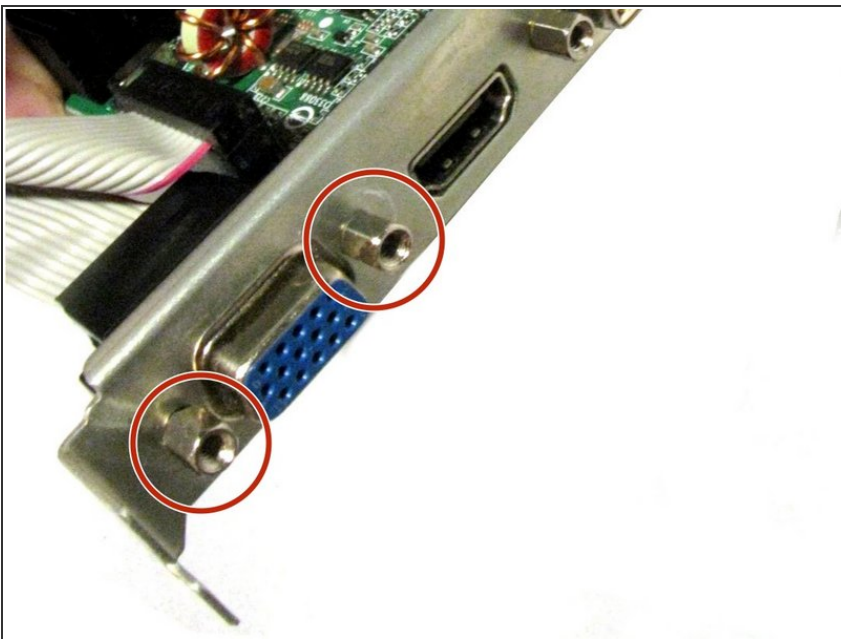
- Locate the push tab that locks the graphics card into place.
- Push the tab away from the graphics card and towards the fan.
- Hold the tab in this position through step 7.

Step 7



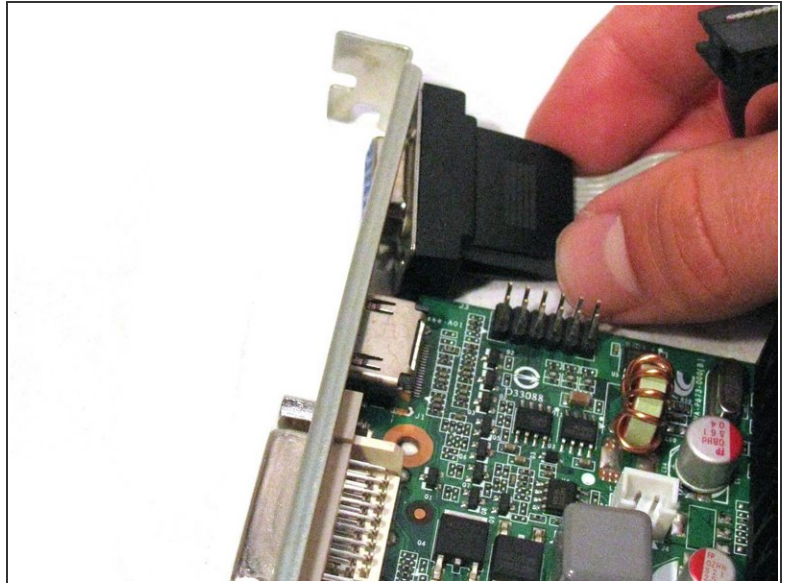
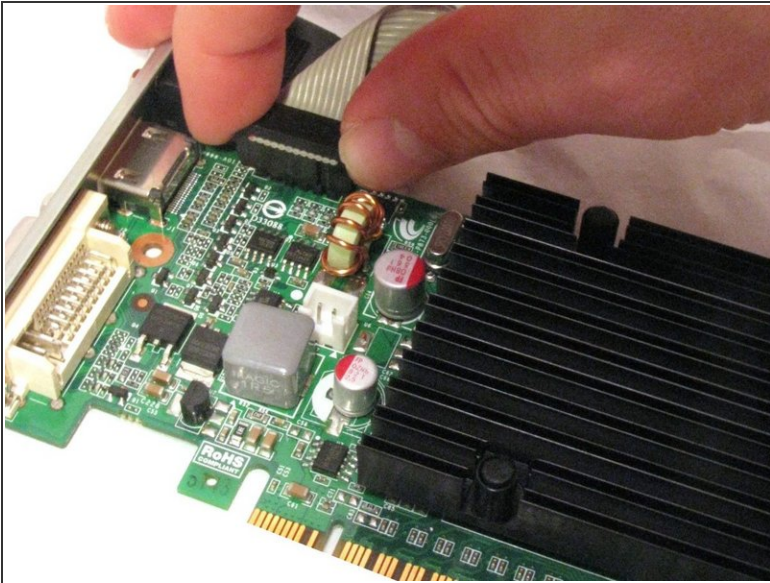
- Keep the tab pushed away from the graphics card (see Step 6).
- Gently lift the graphics card up and out of the desktop.

Step 8



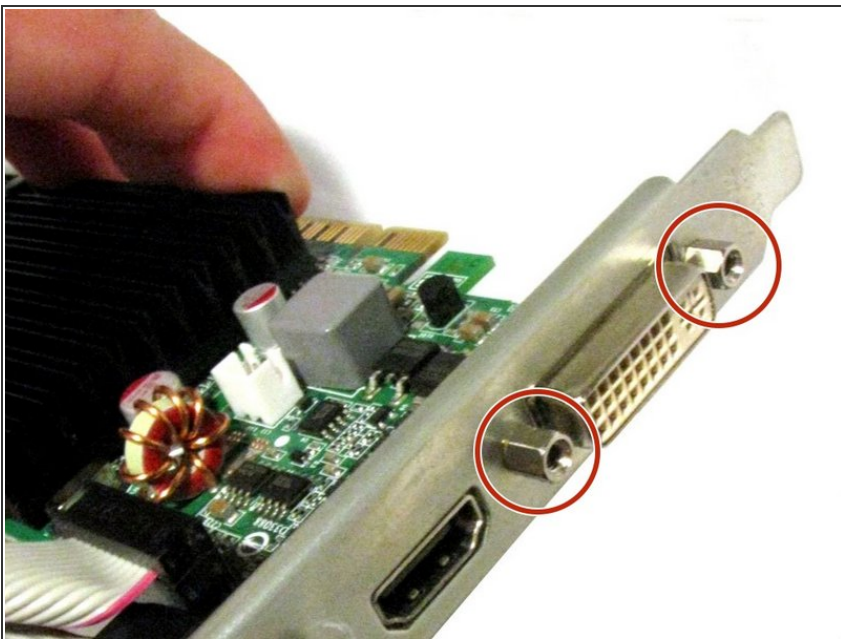
- Remove the two screws holding the VGA ribbon cable to the bracket:
 - Two M3 hex standoff screws.

Step 9



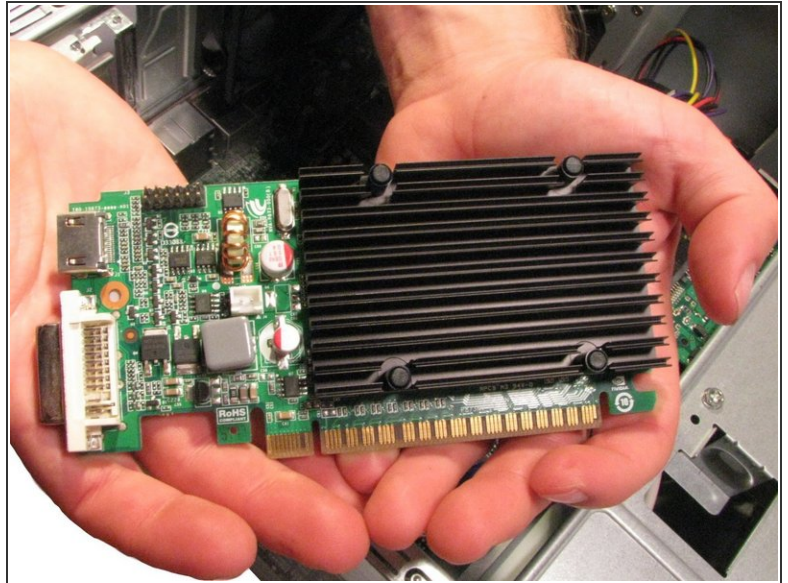
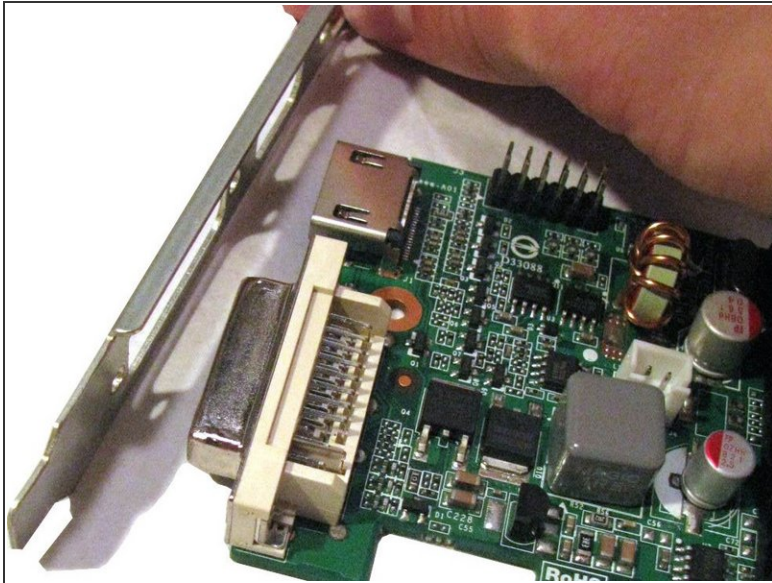
- Gently unplug the ribbon cable from the header pins.
- Remove the other end of the ribbon cable from the bracket.

Step 10



- Remove the two screws holding the DVI adaptor to the bracket:
 - Two M3 hex standoff screws.

Step 11



- Remove the bracket from the graphics card.
- The job is done! You can now put the better graphics card in and bask in the joy of an enhanced visual experience.

To reassemble your device, follow these instructions in reverse order.