



Page 1 of 8

INTRODUCTION

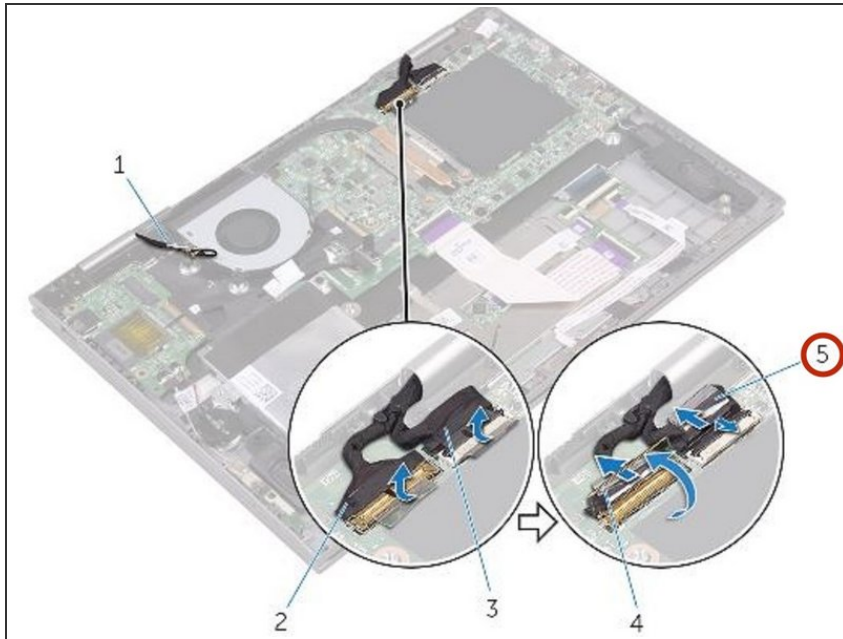
In this guide, we will show you how to remove and replace the Display Assembly.



TOOLS:

- [Phillips #0 Screwdriver](#) (1)
-

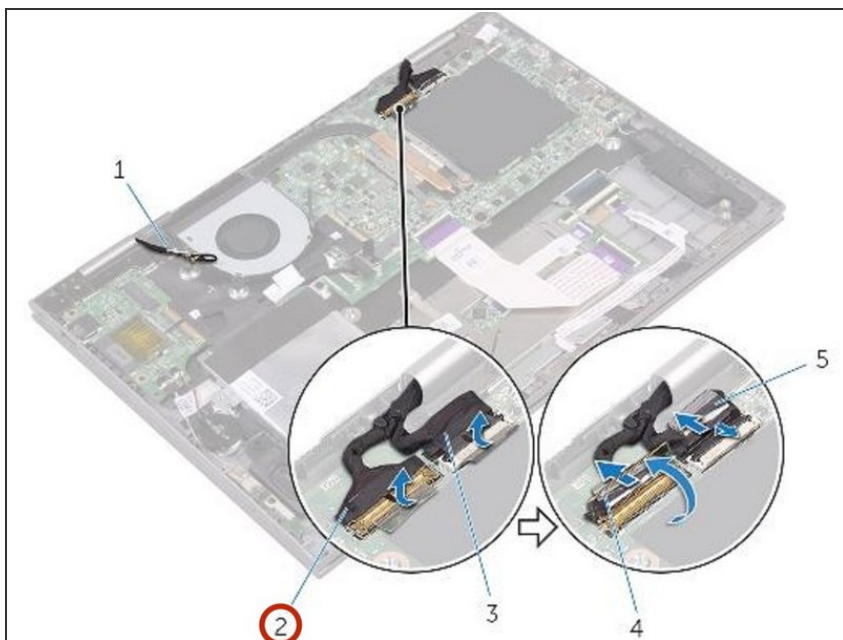
Step 1 — Peeling the Tape



⚠ WARNING: Before working inside your computer, read the safety information that shipped with your computer and follow the steps in [Before Working Inside Your Computer](#). After working inside your computer, follow the instructions in [After Working Inside Your Computer](#).

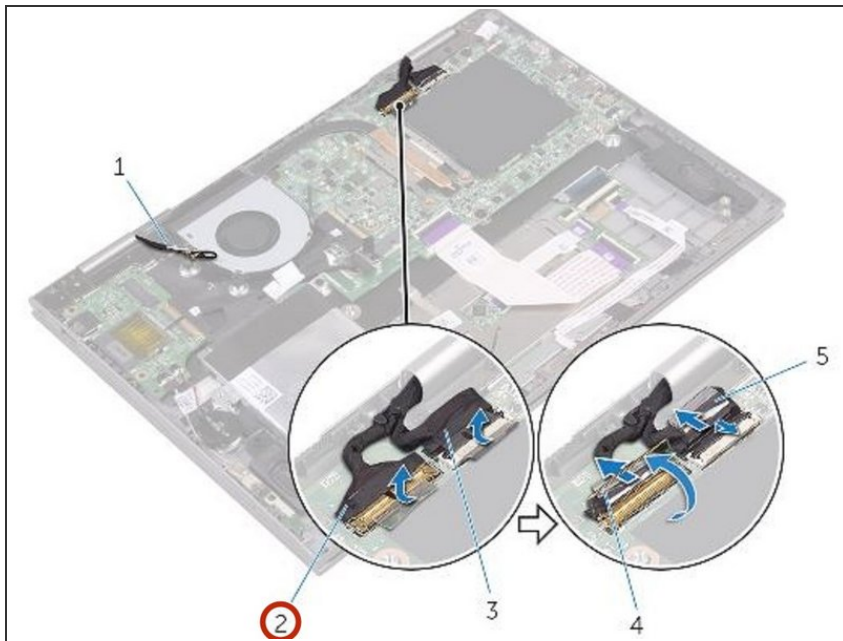
- Peel the tape that secures the display cable and touch-screen board-cable to the system board.

Step 2 — Disconnecting the Display Cable



- Open the latches to disconnect the display cable and the touch-screen board-cable from the system board.

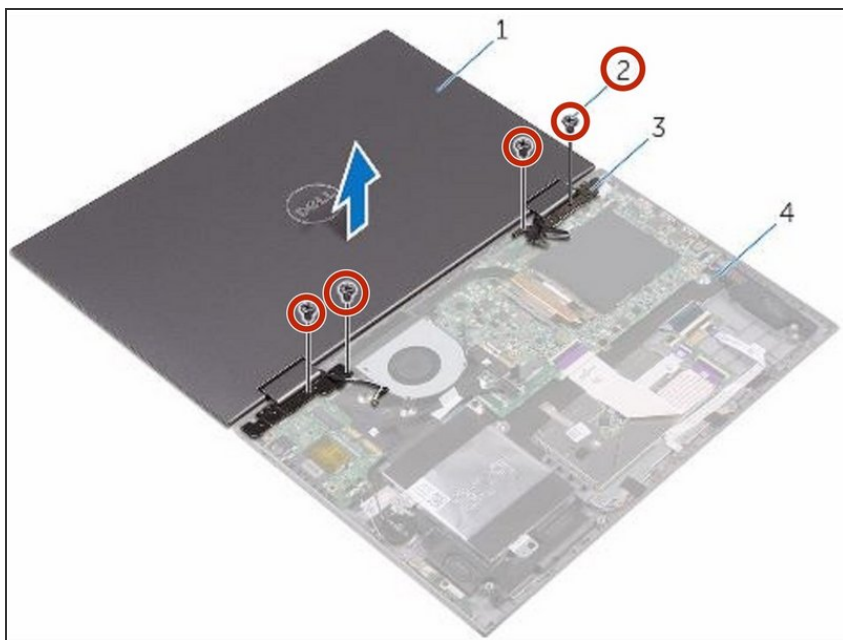
Step 3 — Open the Display Cable



- Turn the computer over and open the display as far as possible.

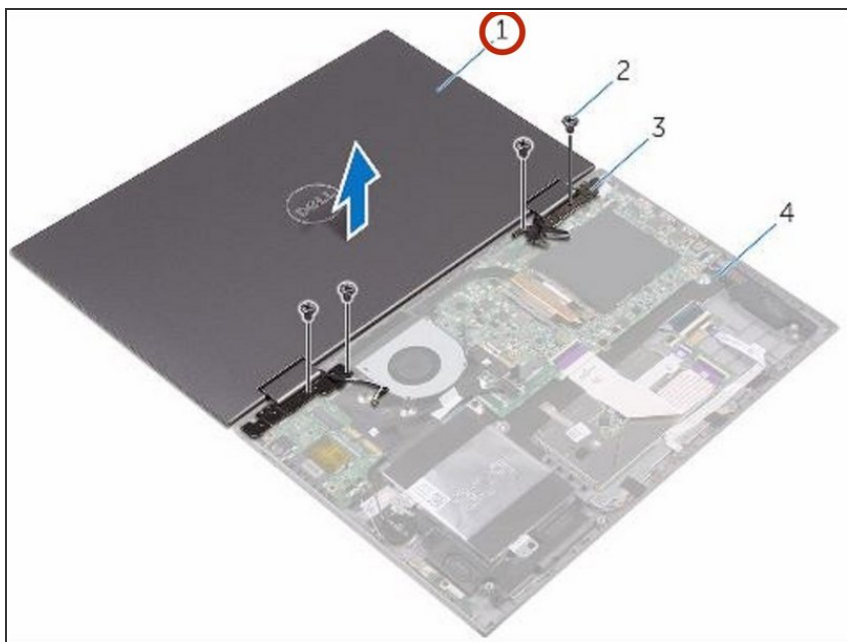
CAUTION: Place the computer on a soft and clean surface to avoid scratching the display.

Step 4 — Remove the Screws



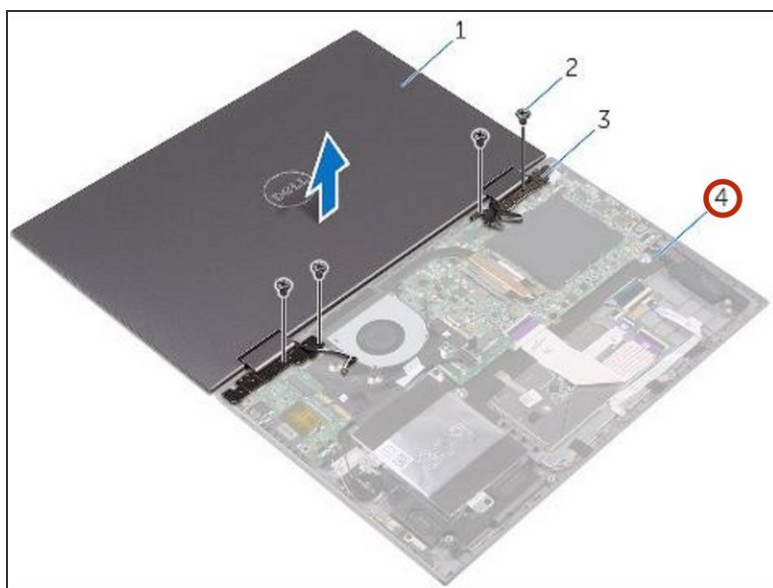
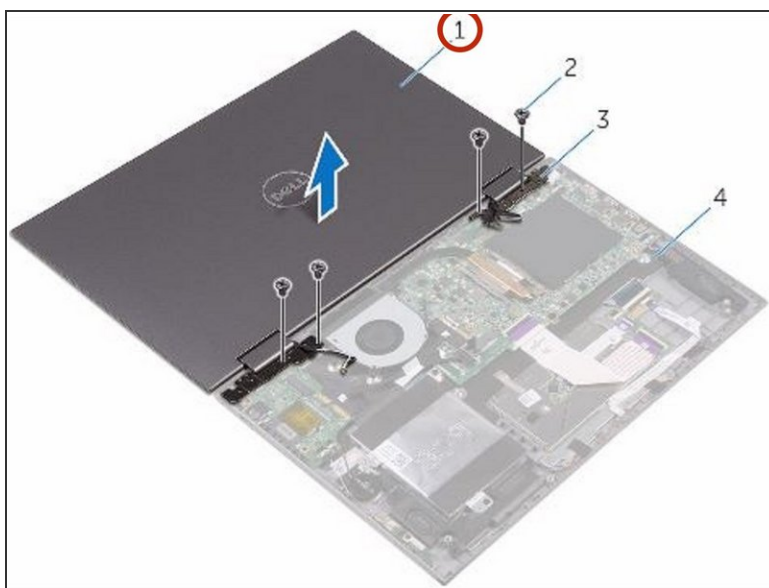
- Place the computer face down on a flat surface.
- Remove the four screws (M2.5x2.5) that secure the display assembly to the palm-rest assembly.

Step 5 — Lifting the Display Assembly



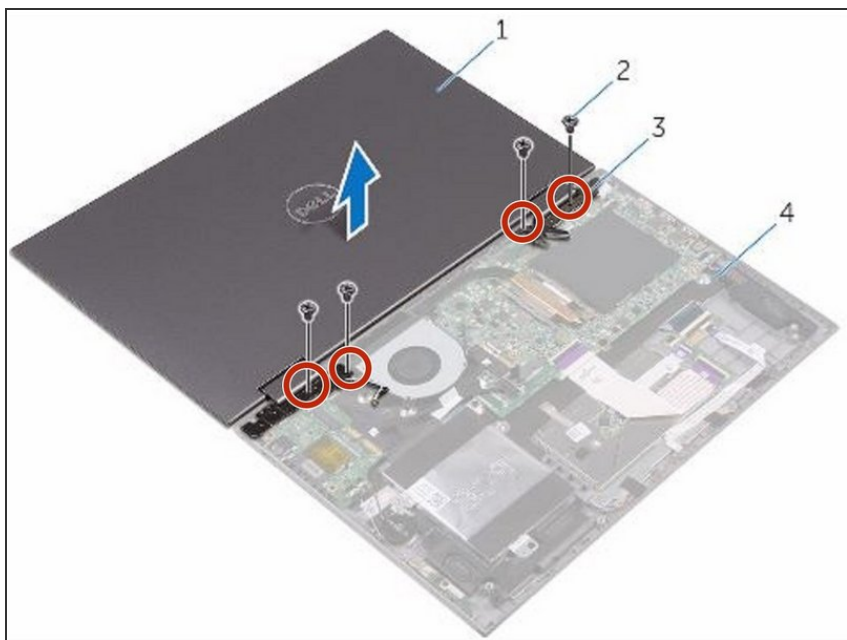
- Lift the display assembly off the palm-rest assembly.

Step 6 — Placing the Display Assembly



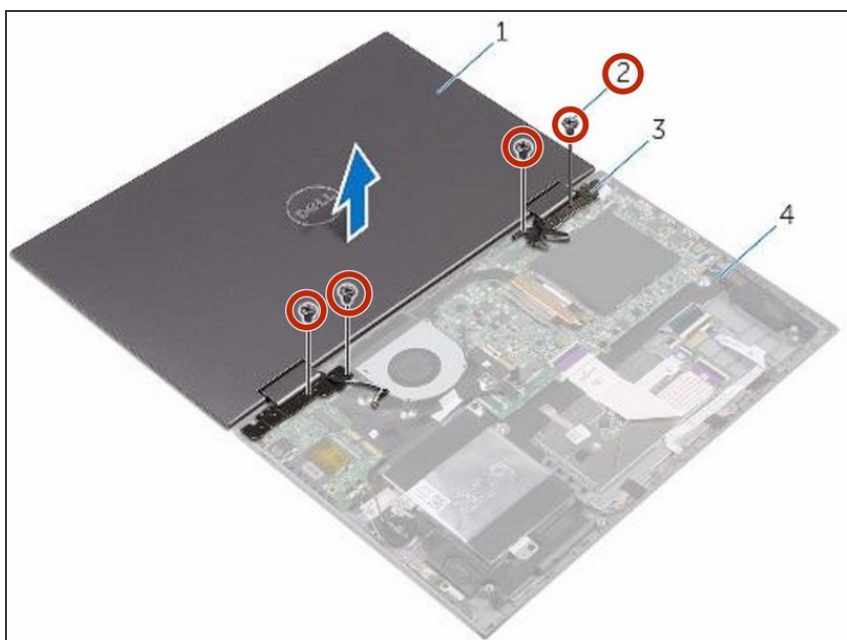
- Place the **NEW** display assembly face down on the palm-rest assembly.

Step 7 — Align the Screw Holes



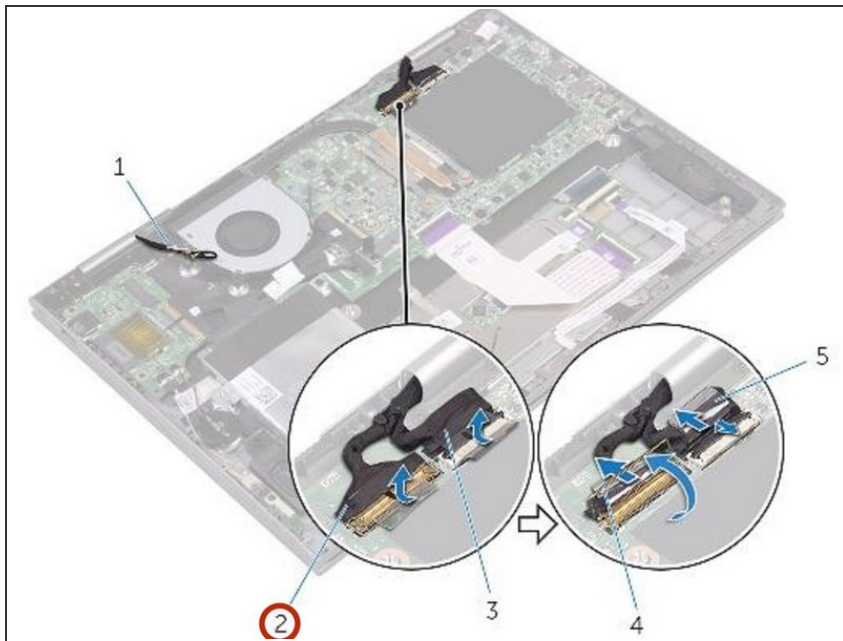
- Align the screw holes on the display hinges with the screw holes on the palm-rest assembly.

Step 8 — Replace the Screws



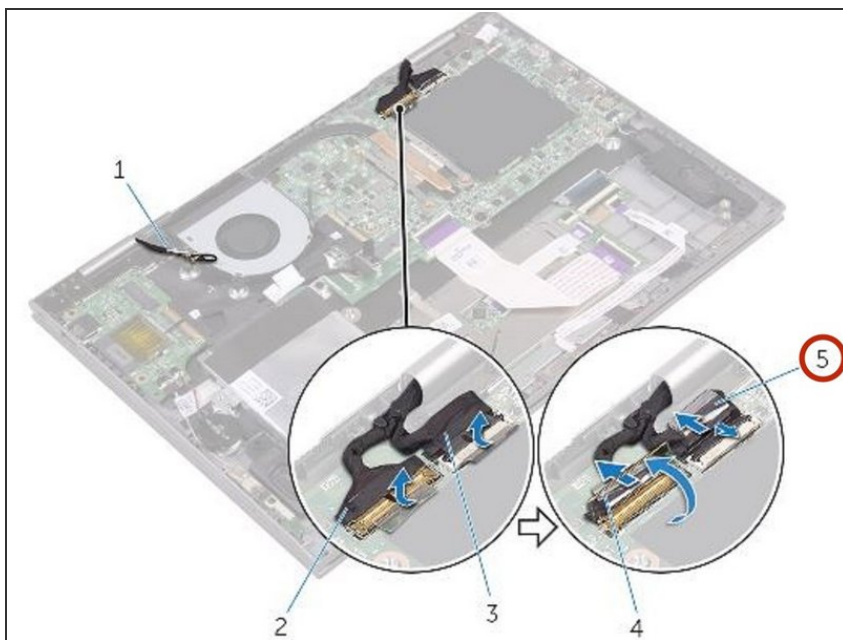
- Replace the four screws (M2.5x2.5) that secure the display assembly to the palm-rest assembly.

Step 9 — Sliding the Display Cable



- Close the display and turn the computer over.
- Slide the display cable and the touch-screen board-cable into their respective connectors on the system board and close the latches to secure the cables.

Step 10 — Adhering the Tape



- Adhere the pieces of tape that secure the display cable and the touch-screen board-cable to their

respective connectors on the system board.
