



Dell Inspiron 6000 DVD/CD Drive Replacement

Dell Inspiron 6000 DVD/CD drive replacement.

Written By: Kenneth Odum



INTRODUCTION

Removing the DVD/CD drive will help to replace a broken or damaged drive.



TOOLS:

- [Phillips #00 Screwdriver](#) (1)
 - [Paper Clip](#) (1)
-

Step 1 — Battery



⚠ To prevent injury, make sure the laptop is unplugged before removing the battery.

- Flip the laptop over, bottom-side up.

Step 2



- Push the switch next to the battery.
- At the same time, lift the battery away from the laptop.

Step 3 — Removing the DVD/CD Drive Screw



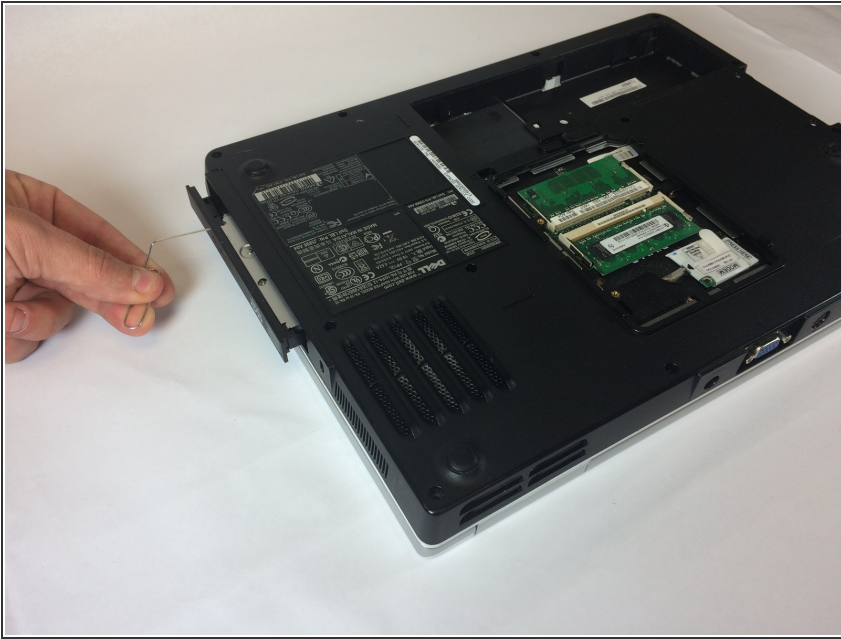
- Remove one 4mm Philips #00 screw.

Step 4 — Inserting Paper Clip



- Open the paperclip as seen here.
- Insert the paper clip into small hole next to the eject button on the disk drive.

Step 5 — Popping Out the DVD/CD Drive



- With slight pressure, push the paperclip into the laptop.
- The disk drive will slowly "pop out" of the side of the laptop.

Step 6 — Completely removing the DVD/CD Drive



- Using your hand, pull the disk drive out of the laptop.

To reassemble your device, follow these instructions in reverse order.