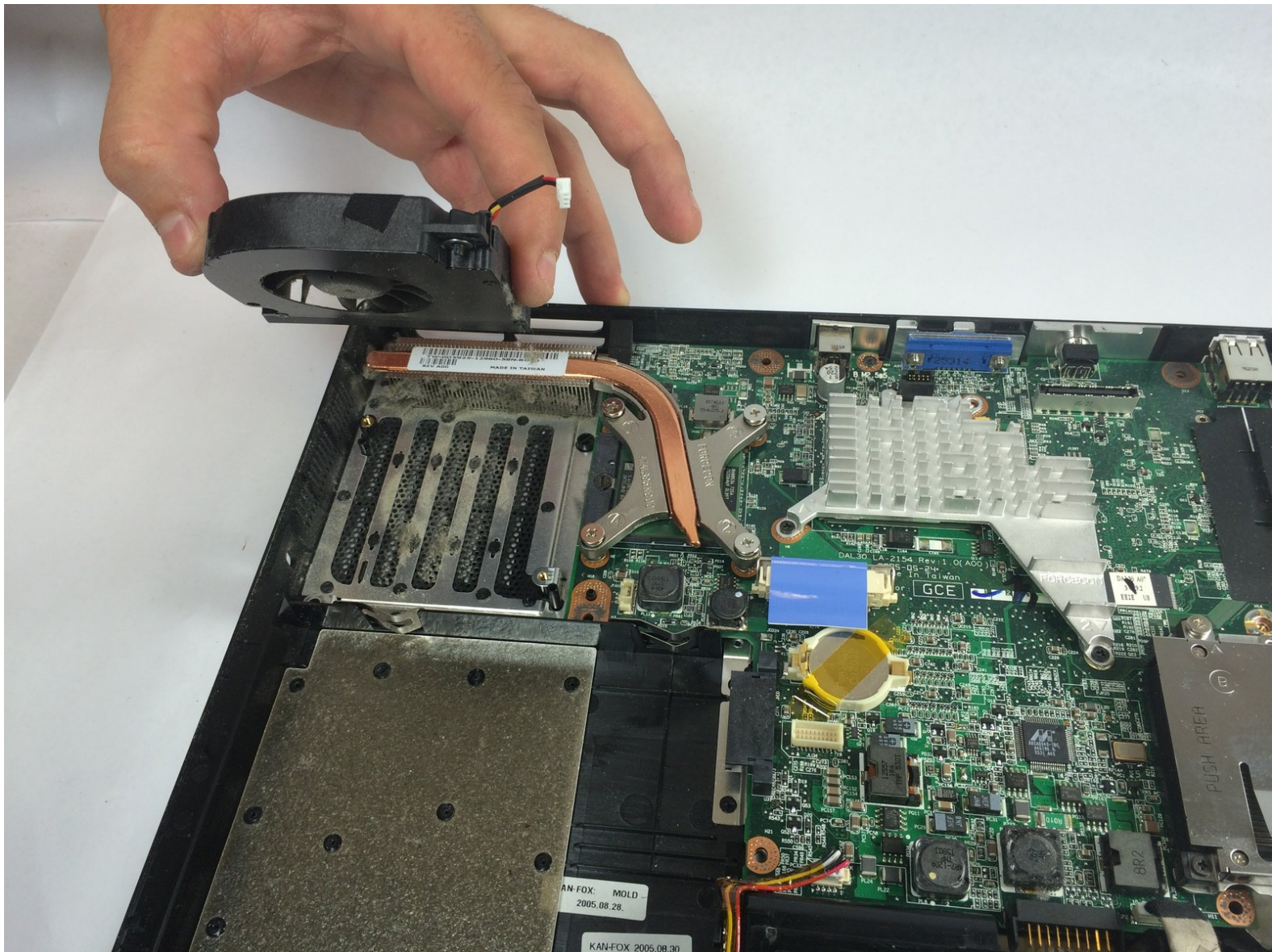




Dell Inspiron 6000 Fan Replacement

Replacement of Dell Inspiron 6000 fan.

Written By: Jacob DeWar



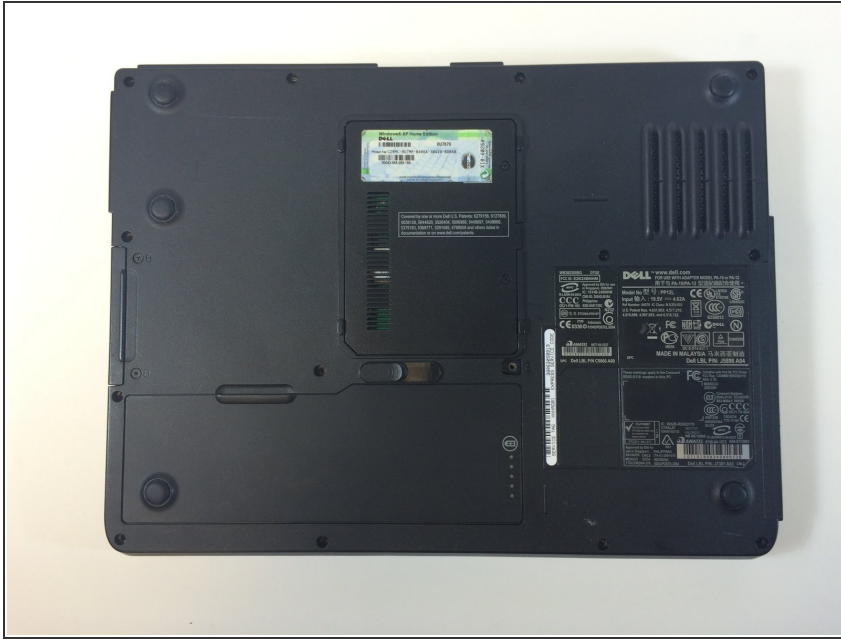
INTRODUCTION


A dirty or broken fan may create overheating and performance issues. Accessing the fan requires some disassembly and time.

TOOLS:

- [Phillips #00 Screwdriver](#) (1)
 - [iFixit Opening Tools](#) (1)
 - [Spudger](#) (1)
-

Step 1 — Battery



 To prevent injury, make sure the laptop is unplugged before removing the battery.

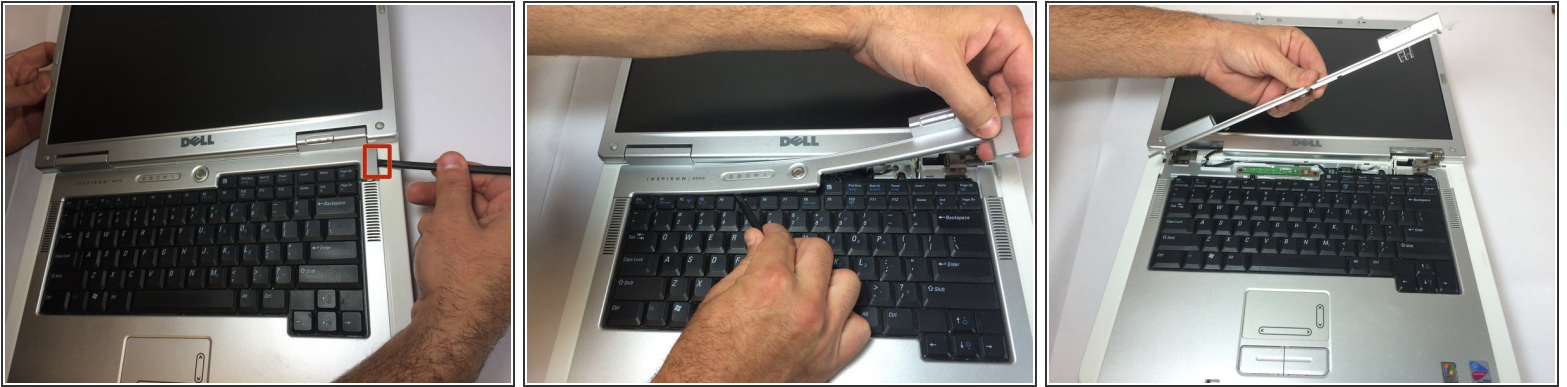
- Flip the laptop over, bottom-side up.

Step 2



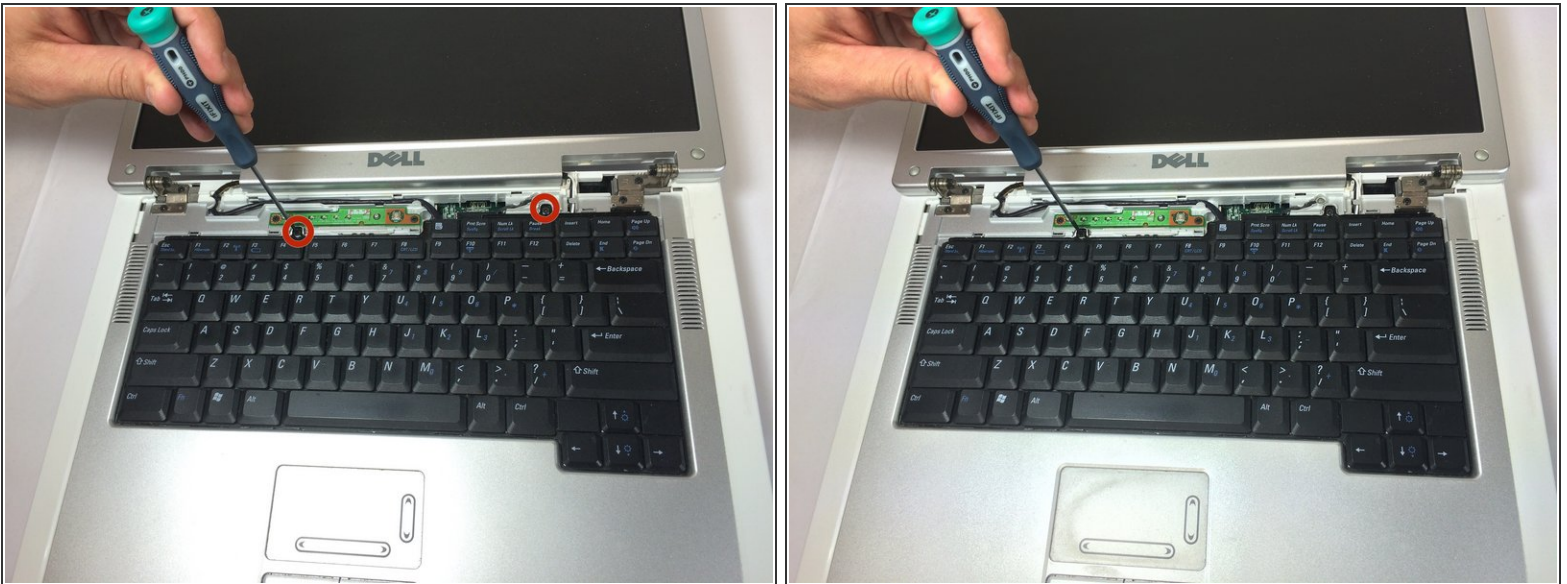
- Push the switch next to the battery.
- At the same time, lift the battery away from the laptop.

Step 3 — Keyboard



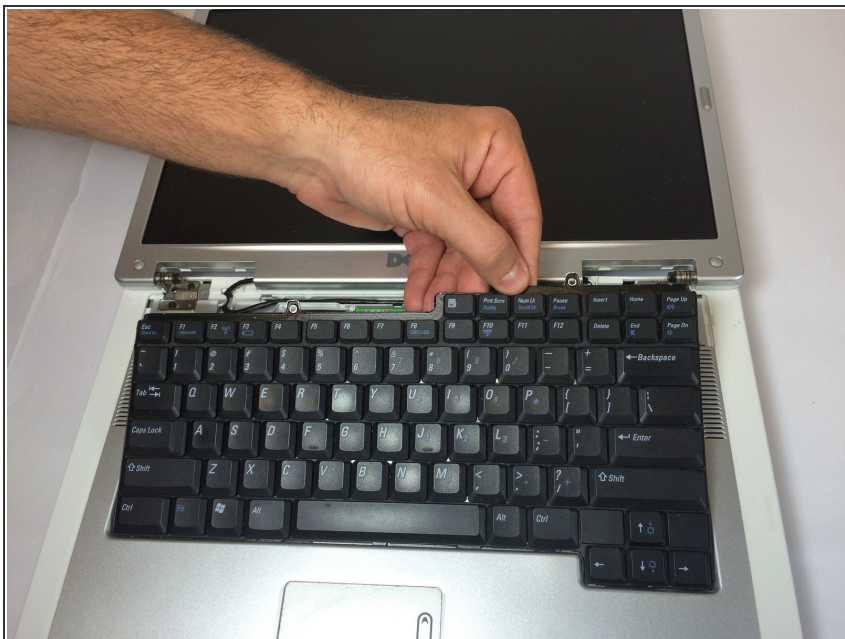
- Place the laptop on flat surface.
- Carefully open the laptop at far as it will go so that the back of screen is touching the flat surface.
- Carefully take a spudger and separate part of the cover at the red circle.

Step 4



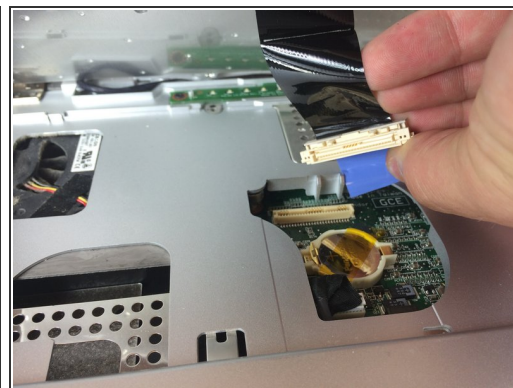
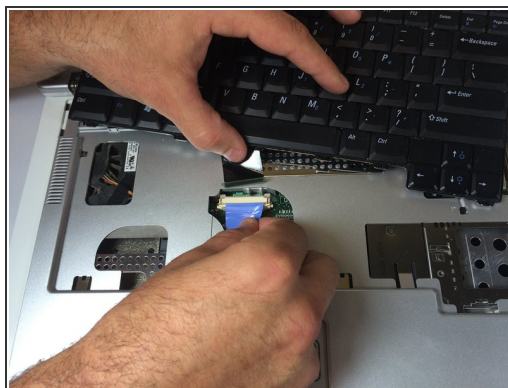
- Remove two 4 mm Philips #00 screws.

Step 5



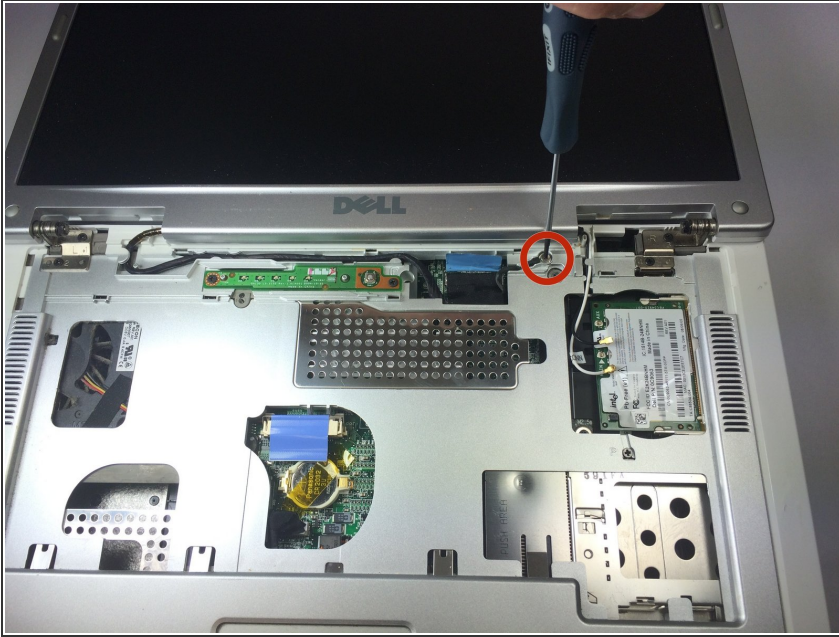
- Gently lift the keyboard away from the laptop without harming the cord that is located at the bottom of the keyboard.

Step 6



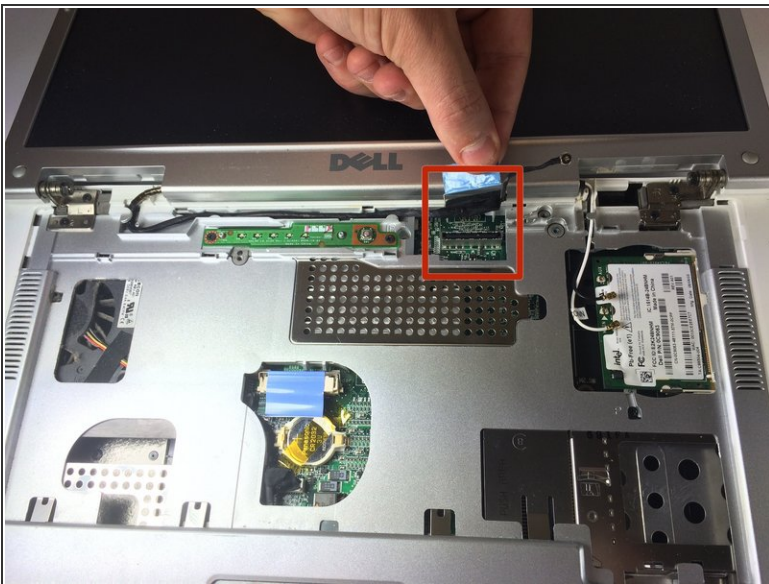
- Gently pull the blue tab up until it comes away from computer.

Step 7 — Fan



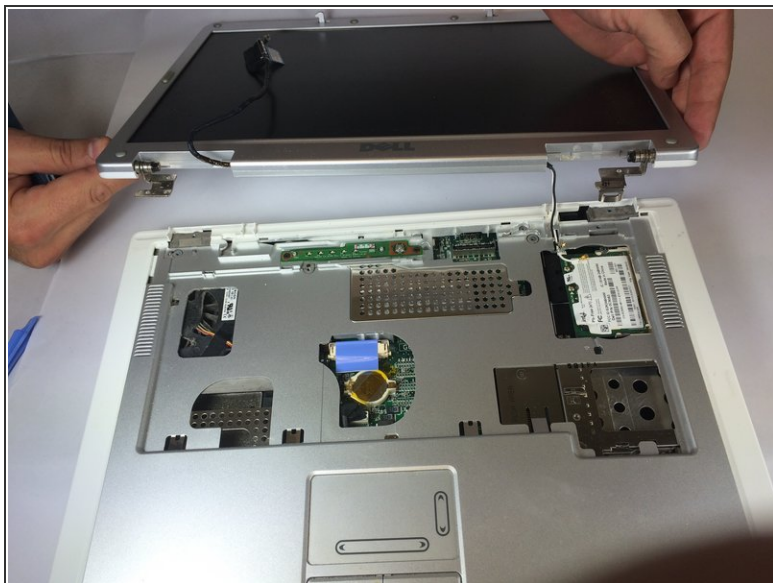
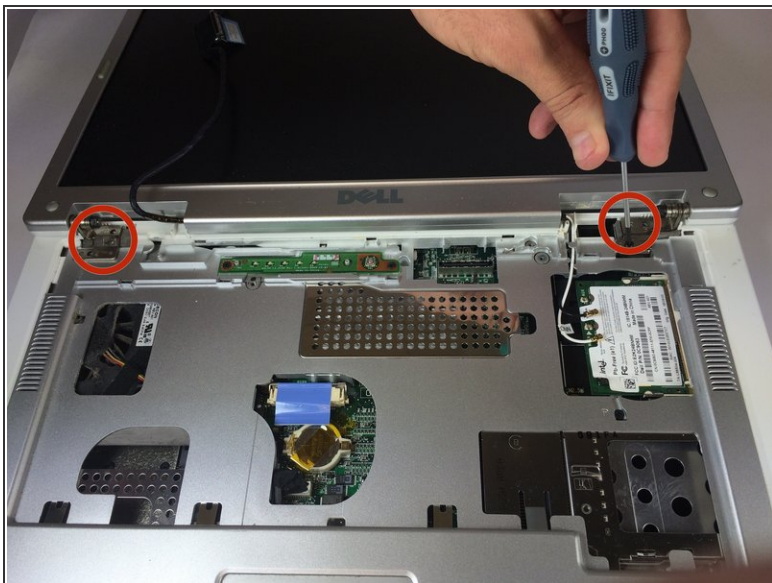
- Unscrew the 4 mm Phillips #00 screw.
- ⓘ The screw will remain attached to the cord when fully removed.

Step 8



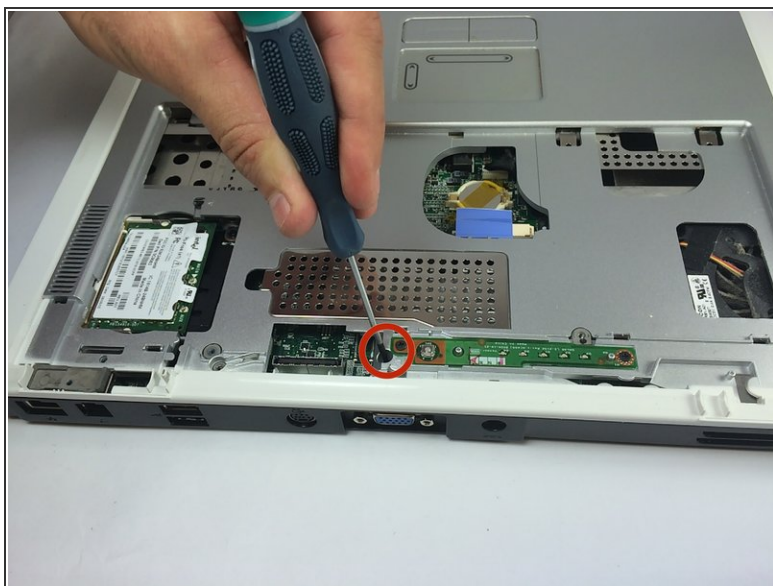
- Gently pull the blue tab to separate the screen connection from the laptop.
- Gently pull and disconnect the white and black cords from the power source.

Step 9



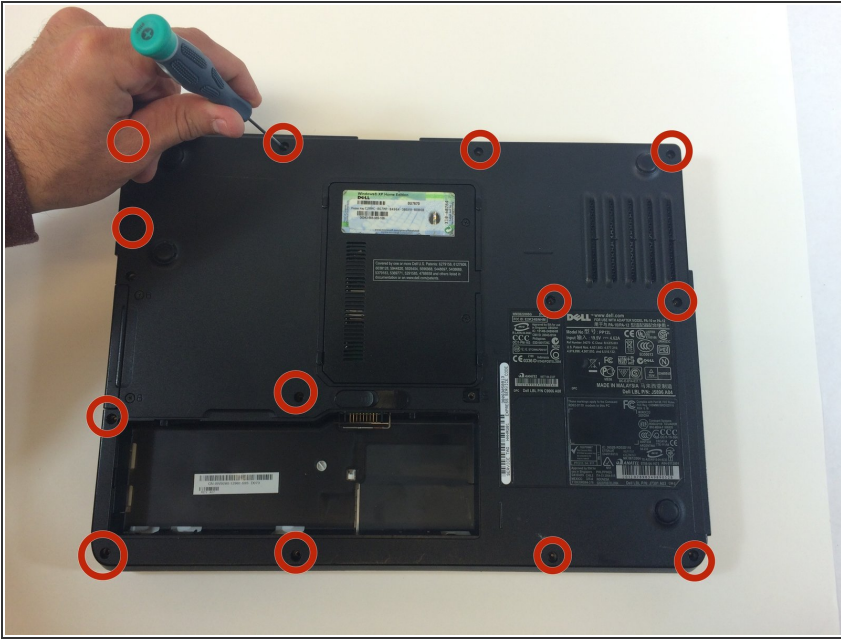
- Remove four 4mm #00 Philips screws from the screen hinges.
- Lift the screen away from the laptop.

Step 10



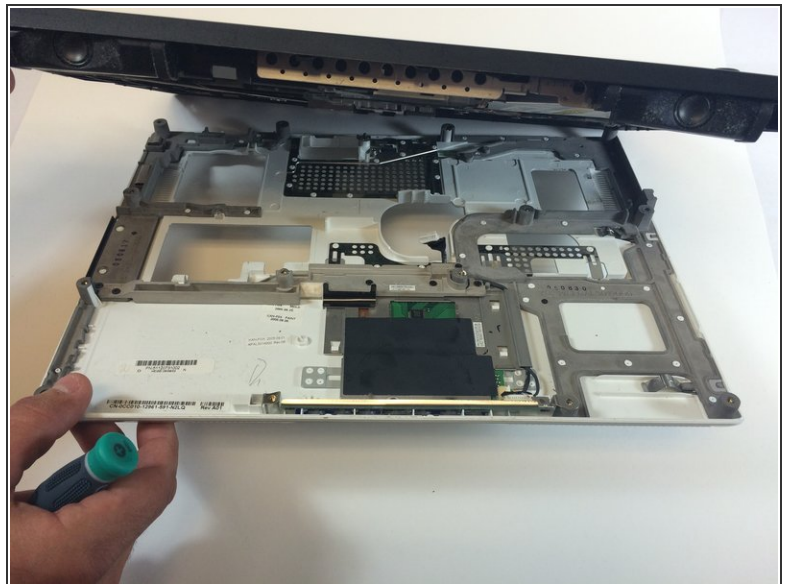
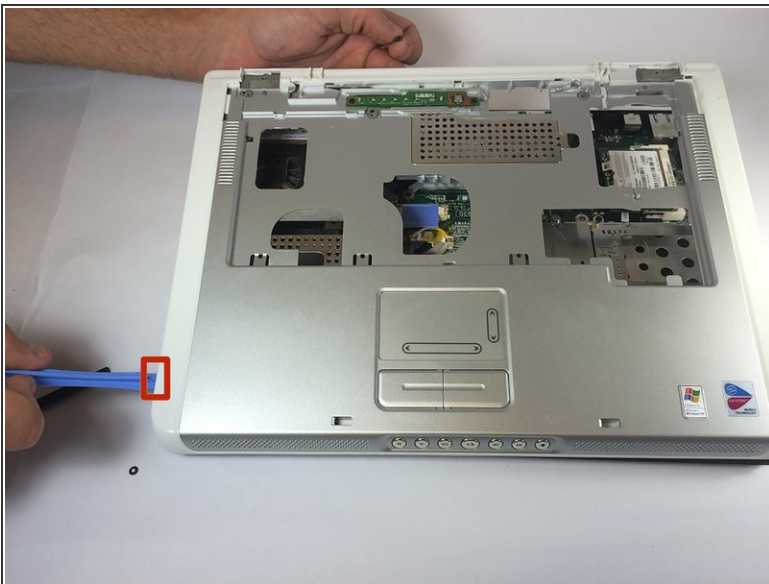
- Remove two 4 mm Philips #00 screws that connect top of laptop to base..

Step 11



- Flip laptop the over and remove thirteen 6mm Philips #00 screws.

Step 12



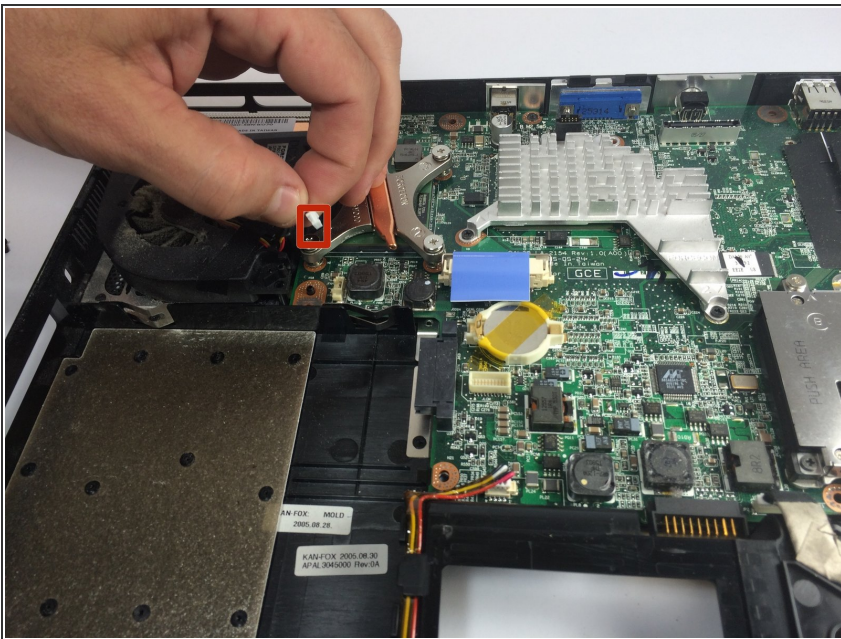
- Insert the plastic opening tool in between the back and front plates of the laptop

Step 13



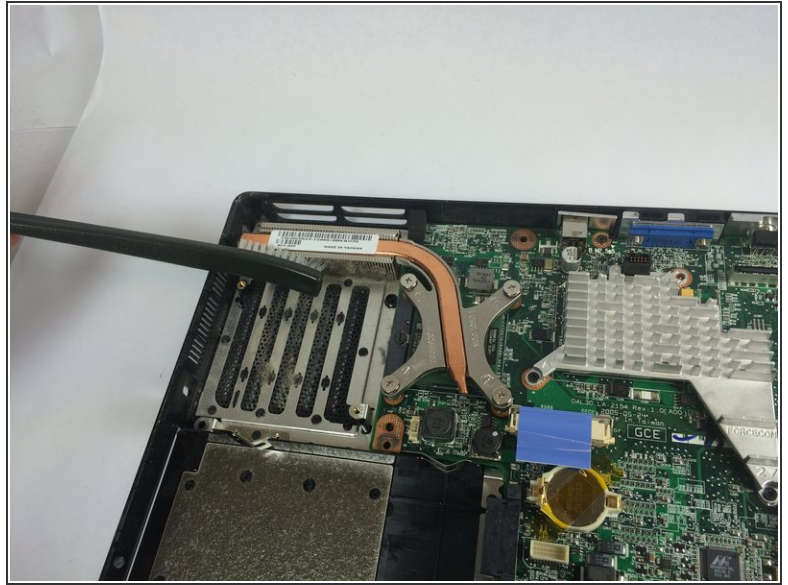
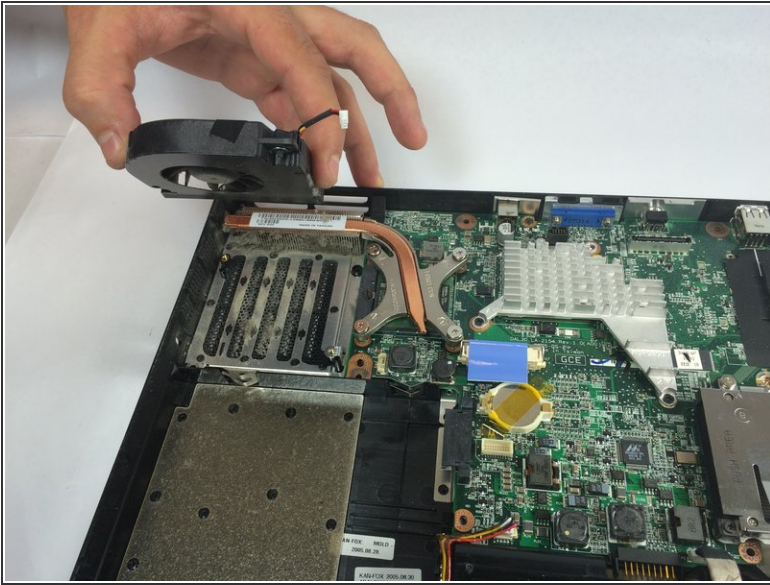
- Remove two 4 mm Philips #00 screws.

Step 14



- Remove the fan power cord

Step 15



- Using your hand, lift the fan from the laptop.

To reassemble your device, follow these instructions in reverse order.