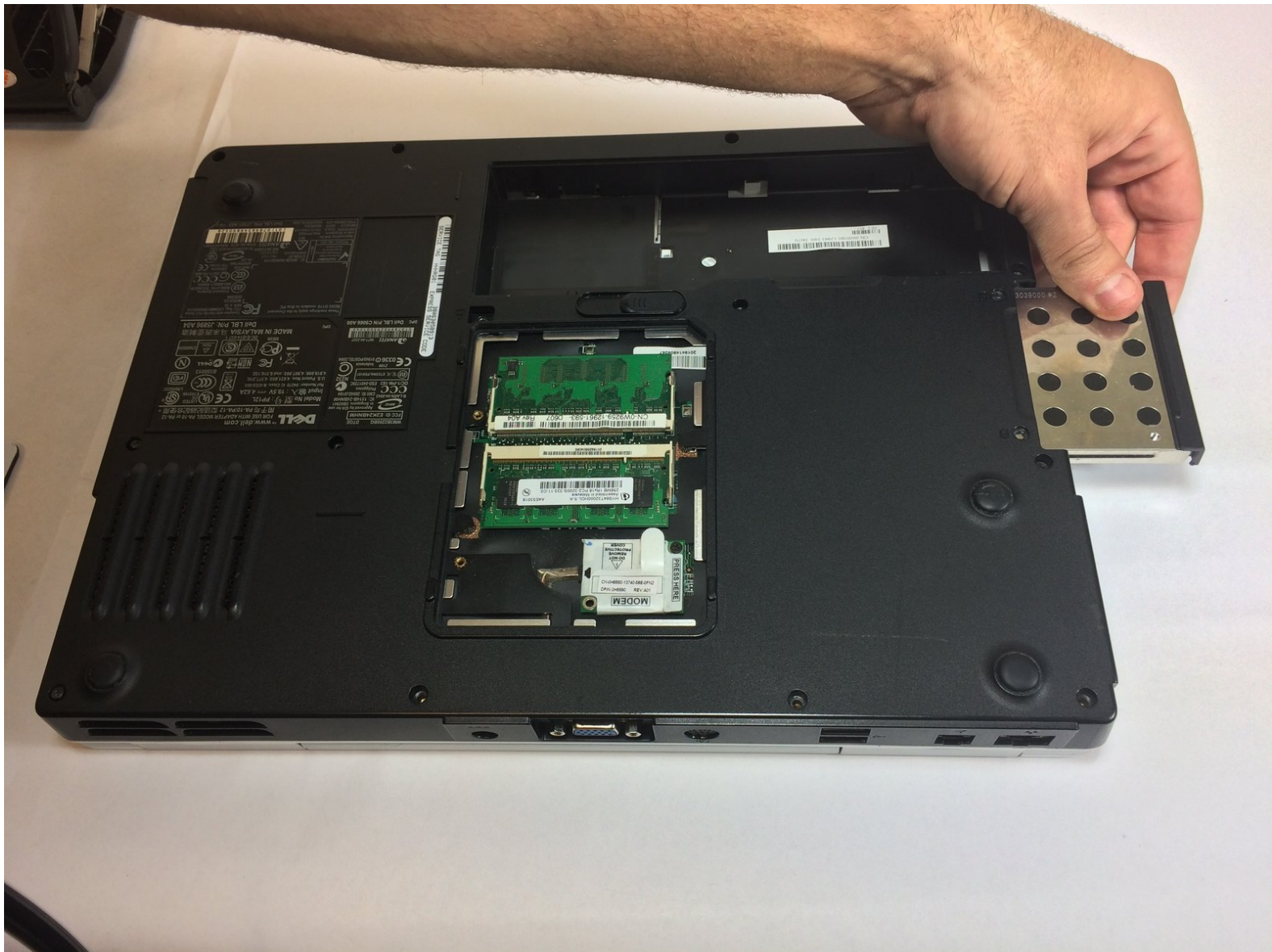




Dell Inspiron 6000 Hard Drive Replacement

Replacement or upgrade of the Dell Inspiron 6000 hard drive

Written By: Kenneth Odum



INTRODUCTION

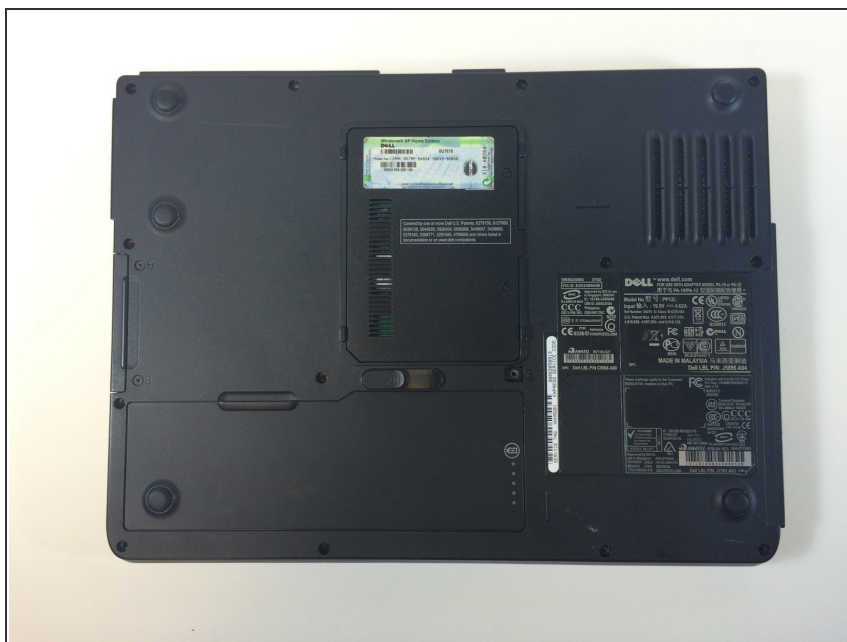
The hard drive removal process is simple and straight forward. Barely any disassembly is required.



TOOLS:

- [Phillips #00 Screwdriver](#) (1)
-

Step 1 — Battery



⚠ To prevent injury, make sure the laptop is unplugged before removing the battery.

- Flip the laptop over, bottom-side up.

Step 2



- Push the switch next to the battery.
- At the same time, lift the battery away from the laptop.

Step 3 — Removal of the Screws



- Remove the two 2.5mm Phillips #00 screws

Step 4 — Slide out the hard drive



- Using your hand, pull hard drive out of the laptop.

To reassemble your device, follow these instructions in reverse order.