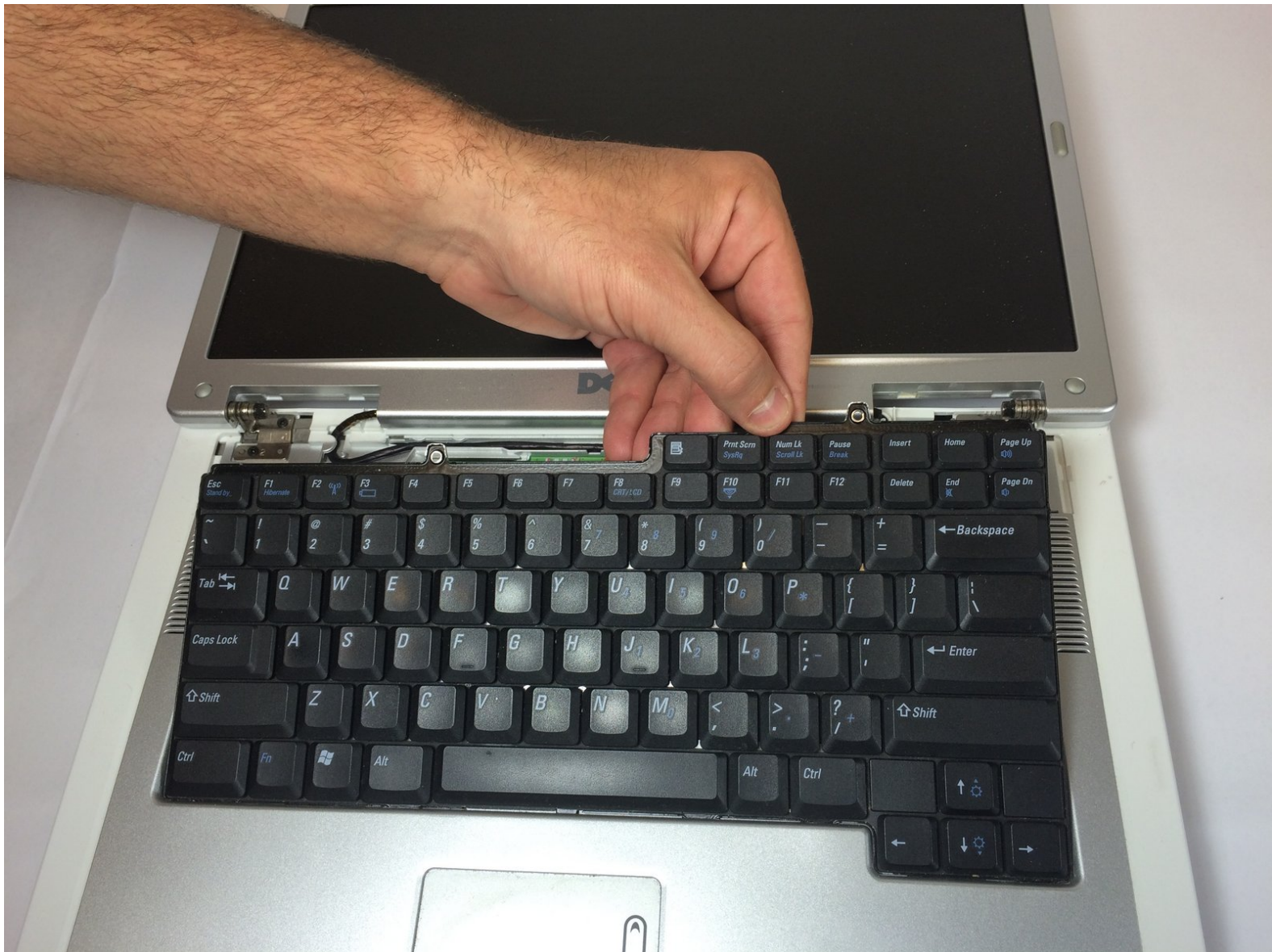




Dell Inspiron 6000 Keyboard Replacement

Replacement of Dell Inspiron 6000 keyboard.

Written By: Jacob DeWar



INTRODUCTION

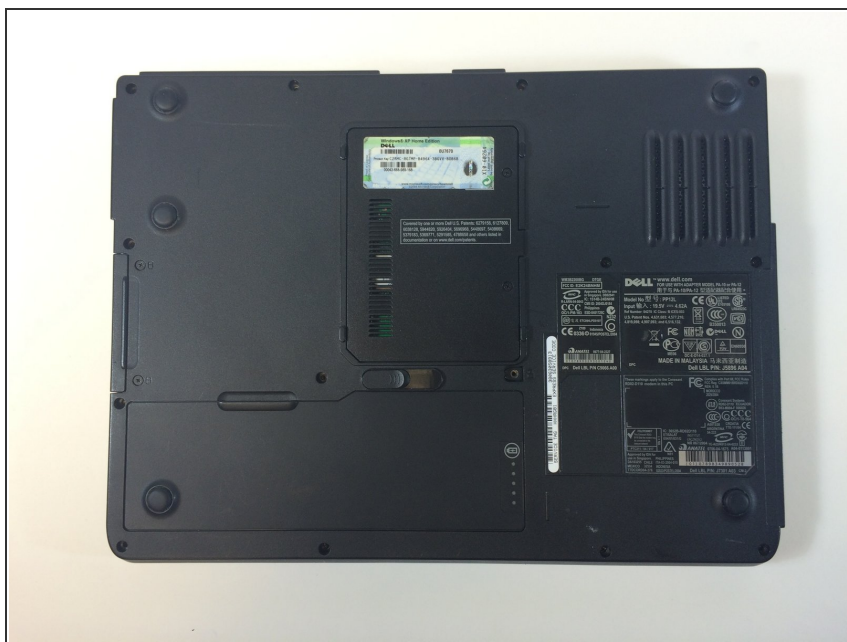
Removing and replacing the keyboard requires some disassembly and time.



TOOLS:

- [Phillips #00 Screwdriver](#) (1)
 - [Spudger](#) (1)
-

Step 1 — Battery



⚠ To prevent injury, make sure the laptop is unplugged before removing the battery.

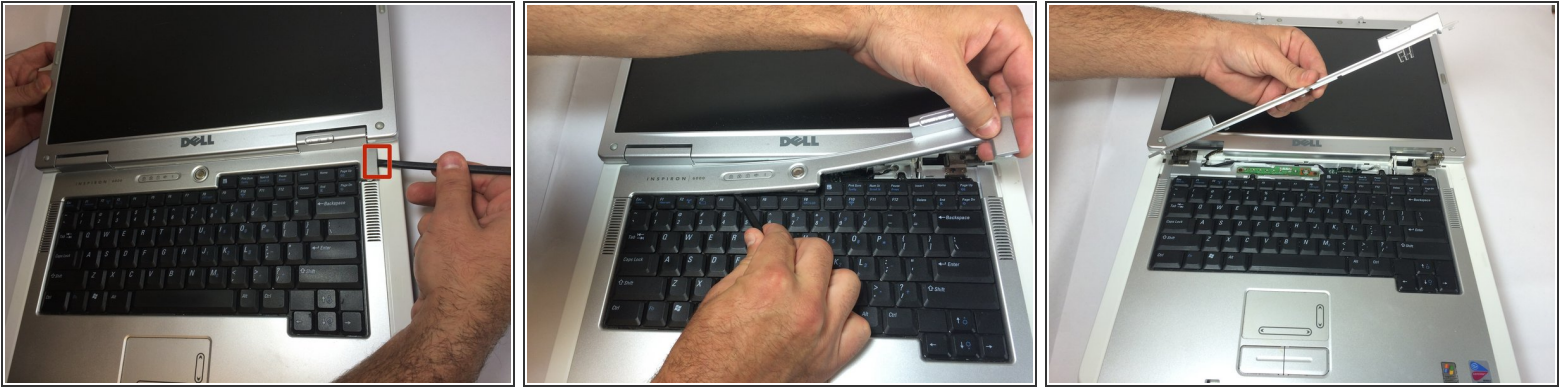
- Flip the laptop over, bottom-side up.

Step 2



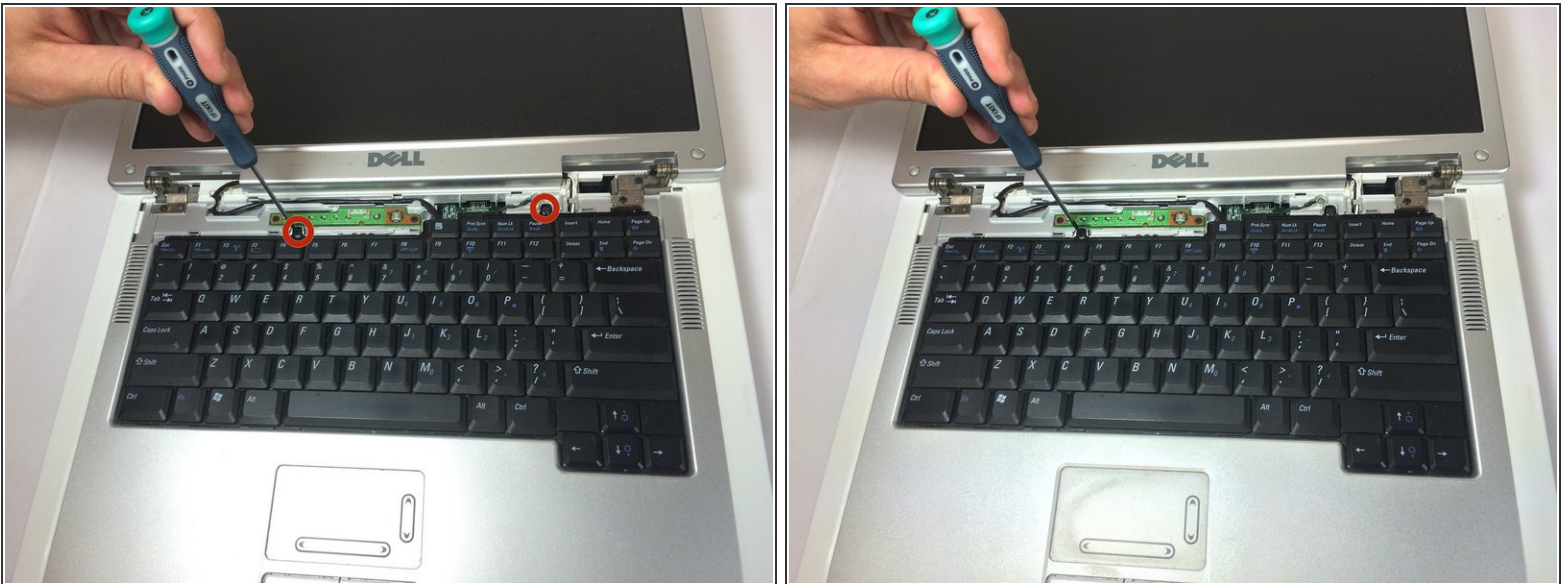
- Push the switch next to the battery.
- At the same time, lift the battery away from the laptop.

Step 3 — Keyboard



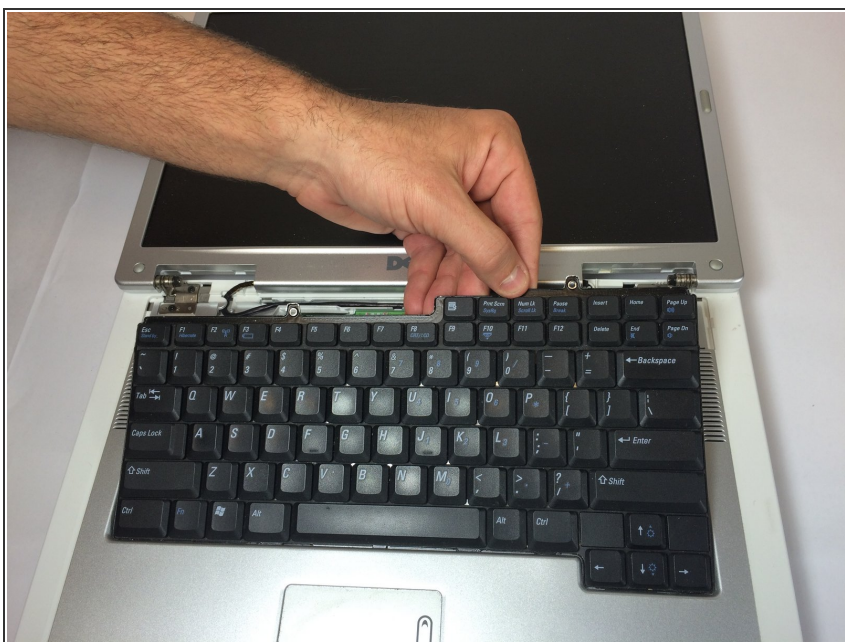
- Place the laptop on flat surface.
- Carefully open the laptop at far as it will go so that the back of screen is touching the flat surface.
- Carefully take a spudger and separate part of the cover at the red circle.

Step 4



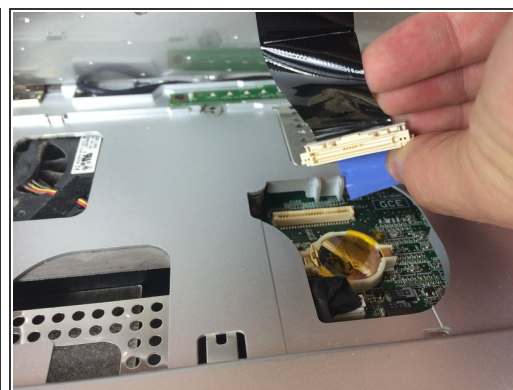
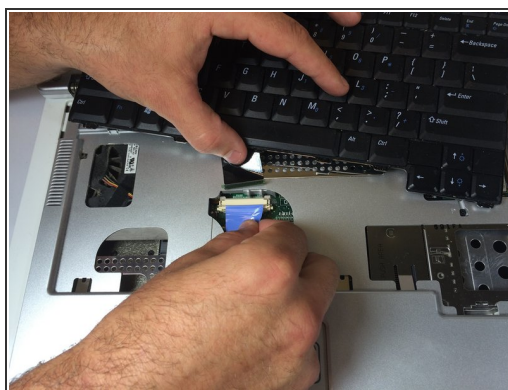
- Remove two 4 mm Philips #00 screws.

Step 5



- Gently lift the keyboard away from the laptop without harming the cord that is located at the bottom of the keyboard.

Step 6



- Gently pull the blue tab up until it comes away from computer.

To reassemble your device, follow these instructions in reverse order.