



Dell Inspiron 600m Hard Drive Replacement

How to remove the hard drive from your Dell Inspiron 600m laptop and install a new hard drive.

Written By: Todd



INTRODUCTION

This guide is will show how to replace a faulty hard drive.



TOOLS:

- [Phillips #00 Screwdriver](#) (1)
-

Step 1 — Battery



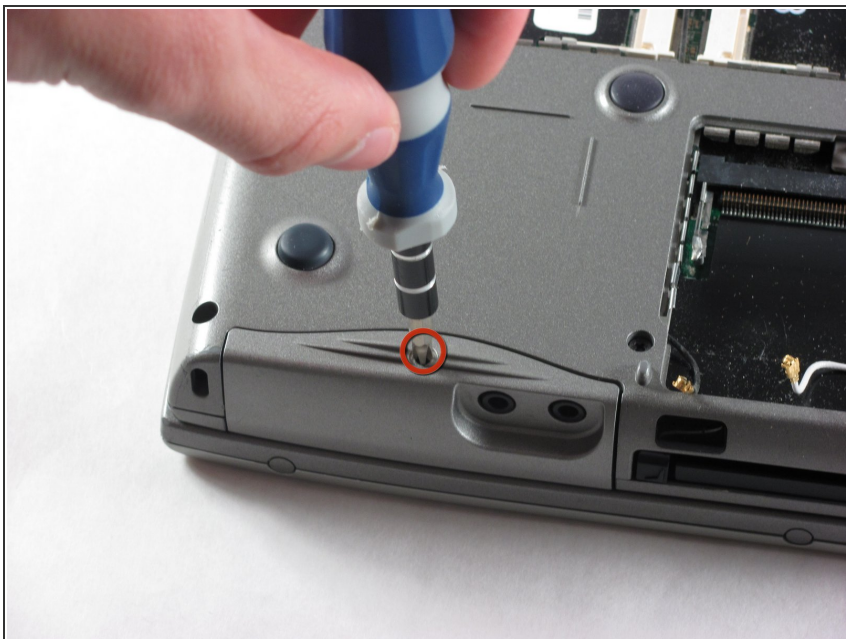
- Push in the tab on the battery and lift up. The battery should detach very easily.

Step 2 — Hard Drive



- The hard drive is located here.

Step 3



- Use a #00 screwdriver to remove the single screw located in the center of the hard drive cover.

Step 4



- Pull the hard drive tray directly away from the computer. The tray should slide out easily.

To reassemble your device, follow these instructions in reverse order.