



Dell Inspiron 600m Keyboard Replacement

This guide will walkthrough how to install a new keyboard.

Written By: Peter Hallsten



INTRODUCTION

In this guide the user will remove the old keyboard and replace it with a new keyboard through the top of the base.



TOOLS:

- [Phillips #00 Screwdriver](#) (1)
- [Flathead 3/32" or 2.5 mm Screwdriver](#) (1)



PARTS:

- [Sunrex Technology Corp Keyboard Model:K010925X](#) (1)

Step 1 — Battery



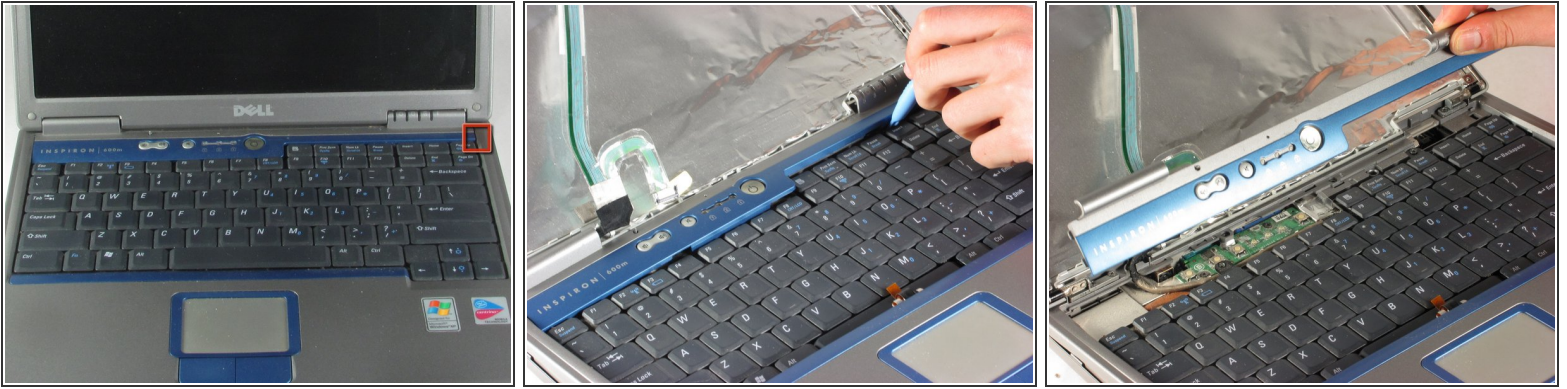
- Push in the tab on the battery and lift up. The battery should detach very easily.

Step 2 — Keyboard



- Orient laptop with the keyboard facing upward and the lid open.

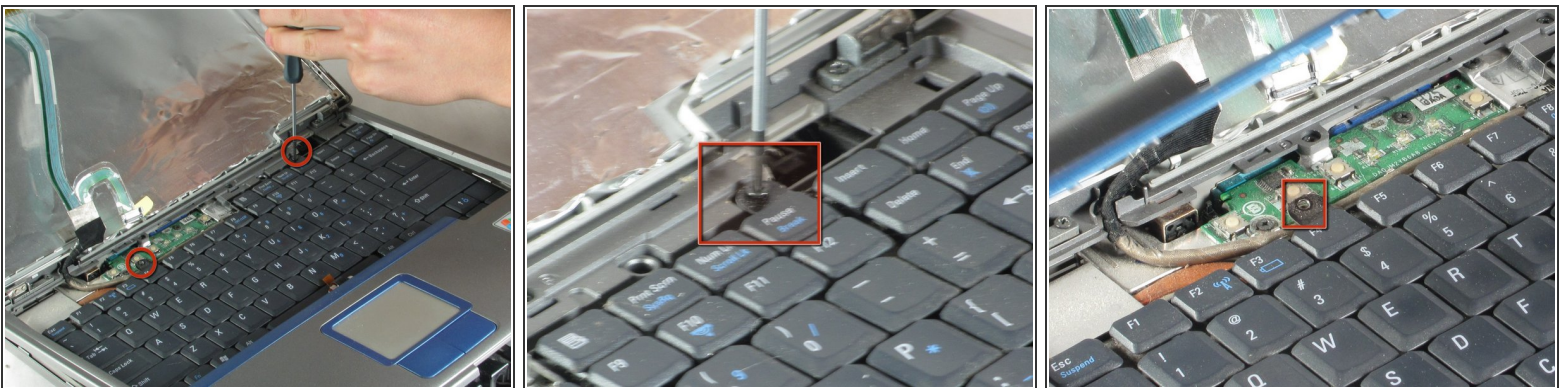
Step 3



 Caution the face plate is a fragile piece of plastic. Handle carefully.

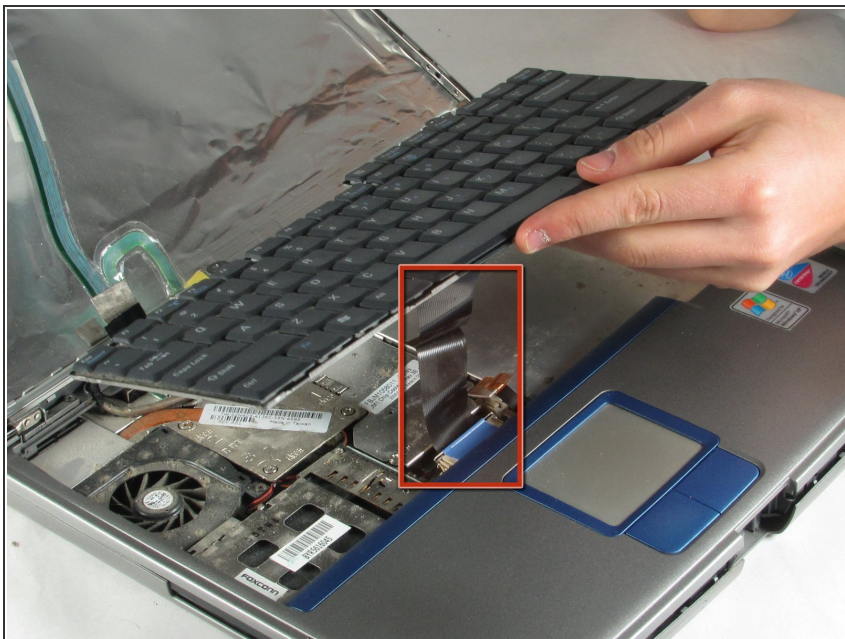
- Start in the upper right corner and work to the left when removing the face plate (includes power button and volume controls).
- Use a flathead screwdriver (or anything flat and strong) to wedge underneath the face plate.
- Carefully lift the screwdriver to remove the face plate.

Step 4



- Use a the Phillips screwdriver to remove the two screws.

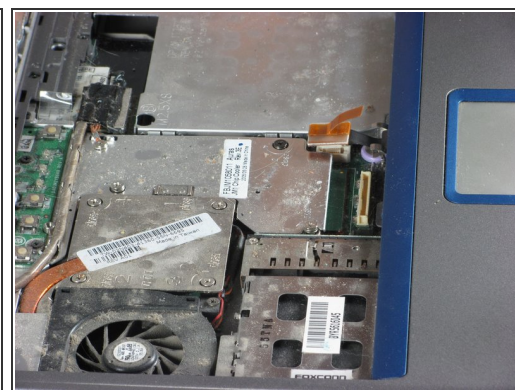
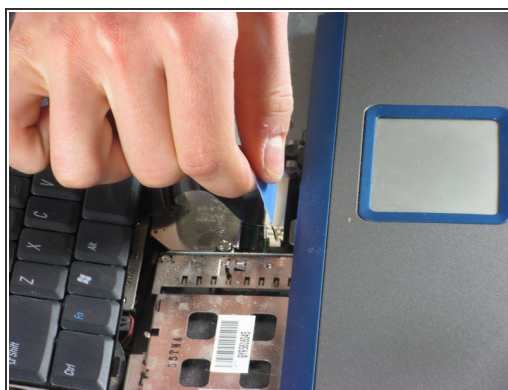
Step 5



- Gently slide keyboard toward screen.

⚠ Lift keyboard carefully. It is attached by a ribbon cable.

Step 6



- Pull upward on blue tab to disconnect keyboard.

To reassemble your device, follow these instructions in reverse order.