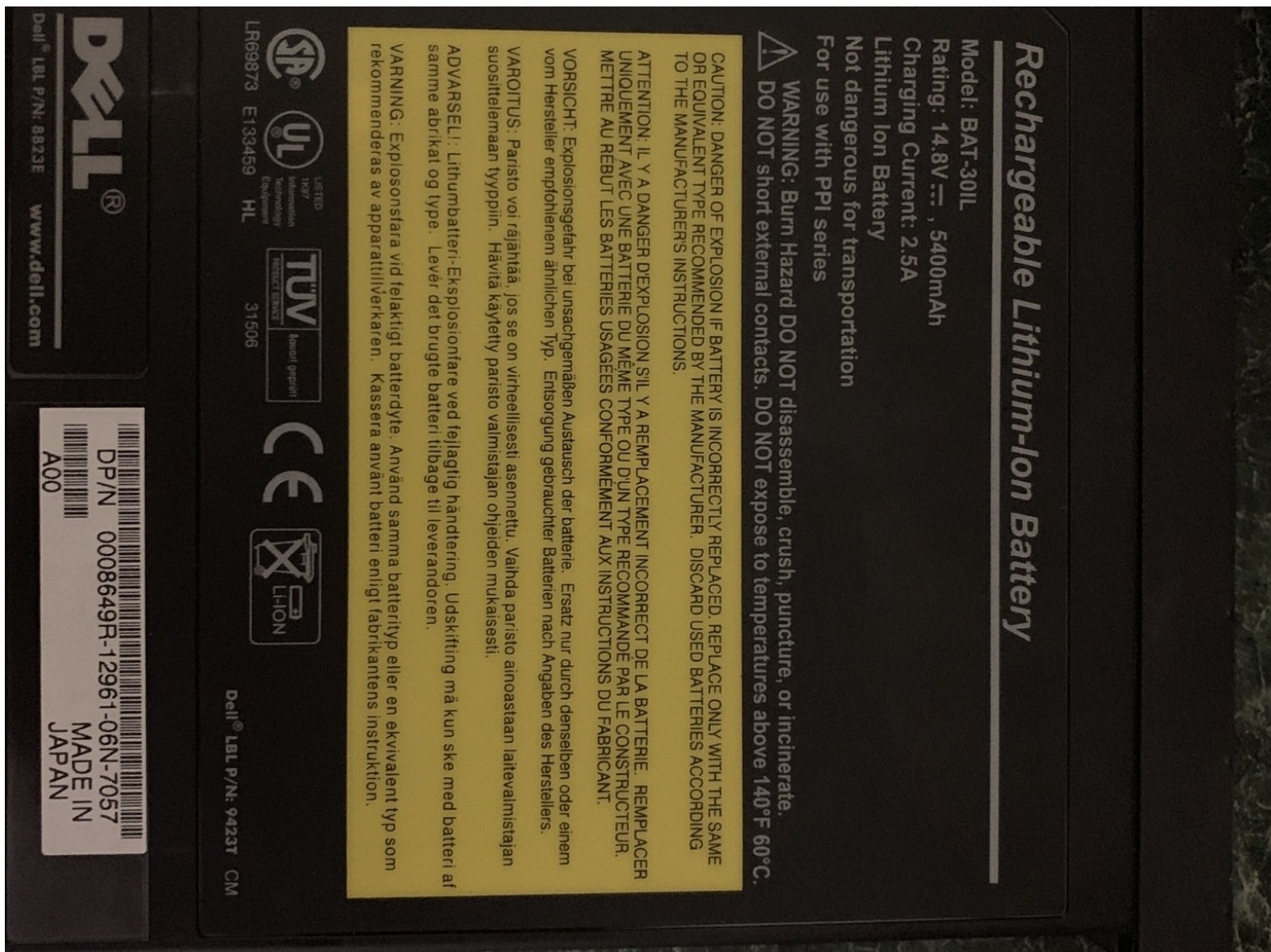




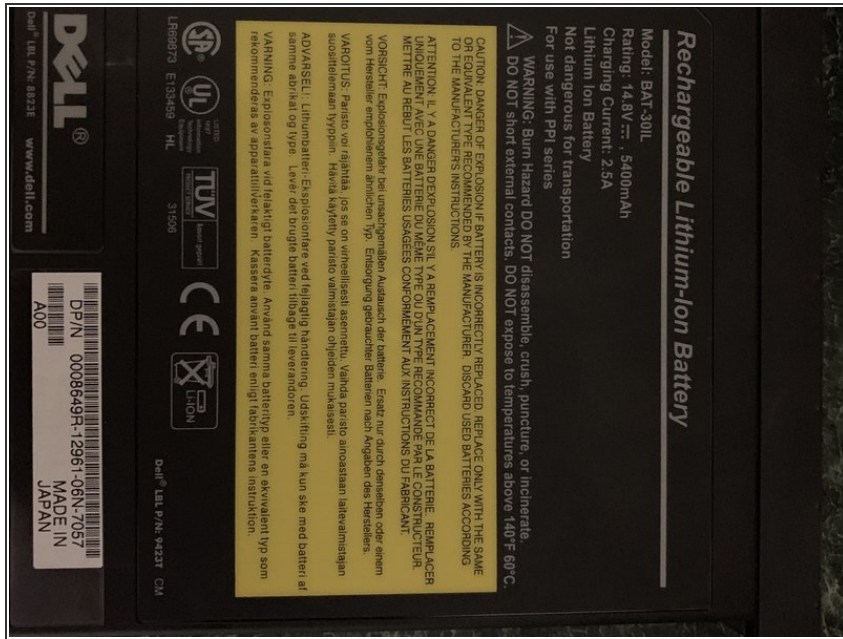
Dell Inspiron 7500 Battery Teardown

Teardown of the 1999/2000 year model Dell Inspiron 7500 laptop battery. Battery model BAT-301L

Written By: Gary Sparkes



Step 1 — Dell Inspiron 7500 Battery Teardown



- The battery....

Step 2



- Underside of battery, as you can see the slide part comes off. the slide part is there to adjust for if the battery is on the left or right bay of the laptop.

Step 3



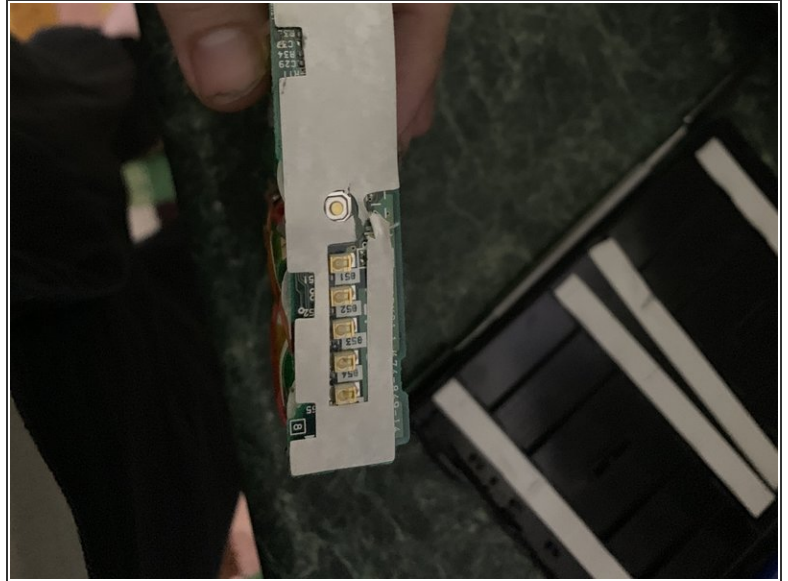
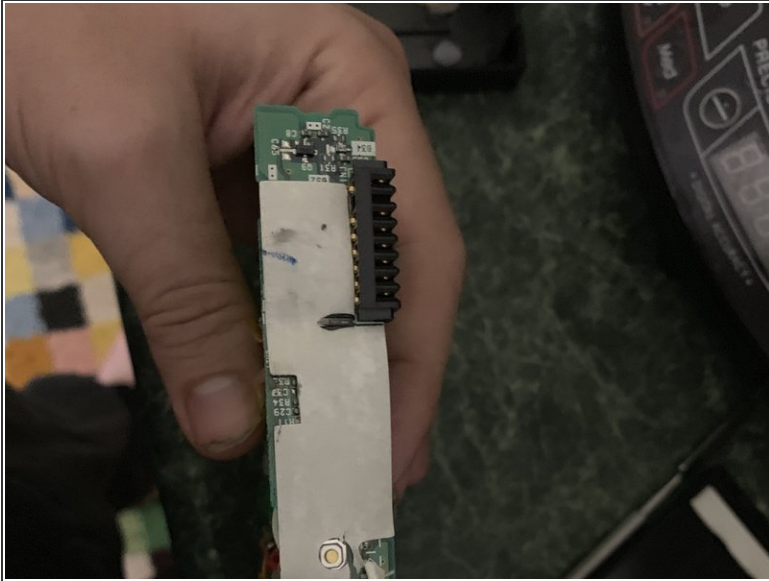
- Top of battery pack with upper case removed. Case is NOT glued on, but is clipped on. You can see the case clips (and damaged top retention areas) from where I pulled it apart.

Step 4



- Wiring. Three leads for balance charging., red and black are for the 14.8v connections. The pack is separated into 4 sets of 3 cells each run in series.

Step 5



- Battery connector on PCB