



Dell Inspiron 7568 Wifi Card Replacement

This guide will instruct you on the replacement of the Wifi Card on the Dell Inspiron 7568.

Written By: Elijah Basile



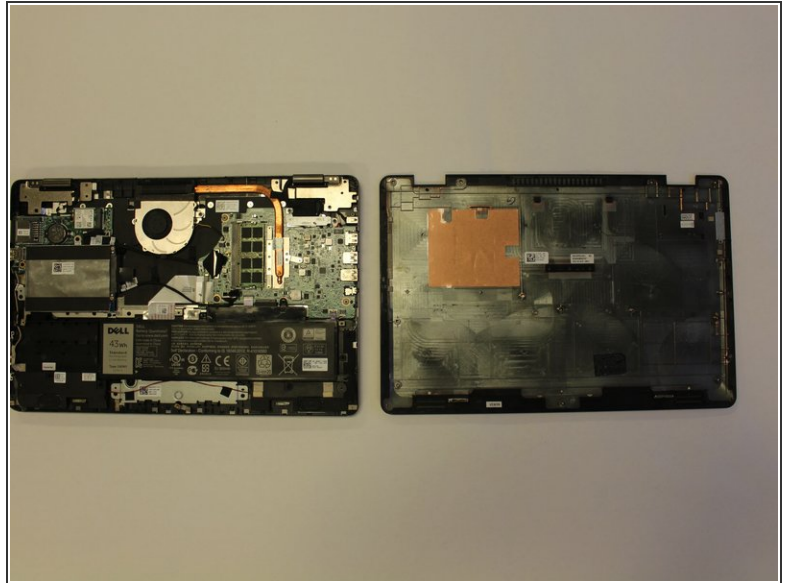
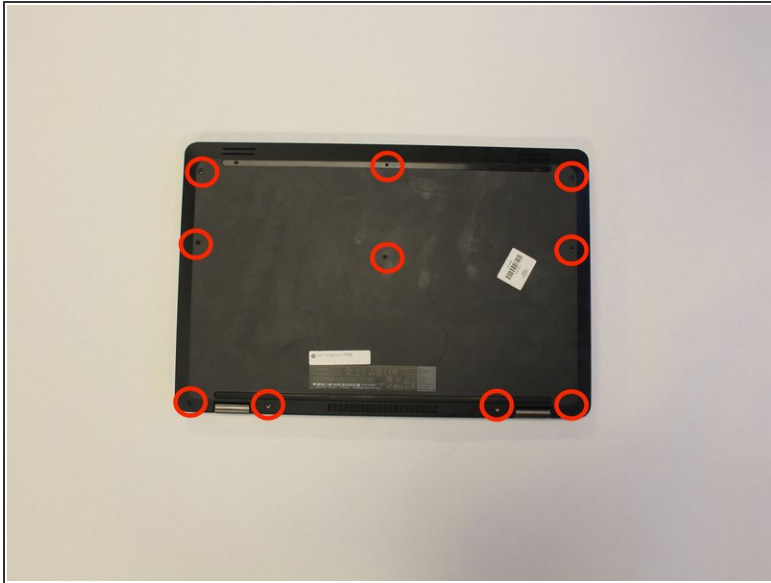
INTRODUCTION

When removing or replacing the WiFi card of the Dell Inspiron 7568 it is important to make sure the laptop it is unplugged and completely turned off. User should also remember to be careful when unplugging and removing the battery. It is recommended that users keep different screw types separated to keep assembly easier. Make sure to use a Phillips head #1 screw driver. Make sure to work in a static free area with static protection gloves.

TOOLS:

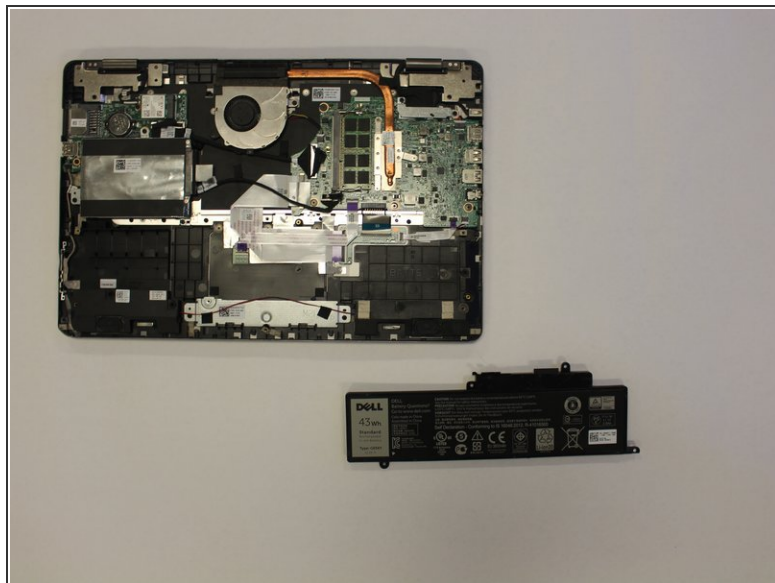
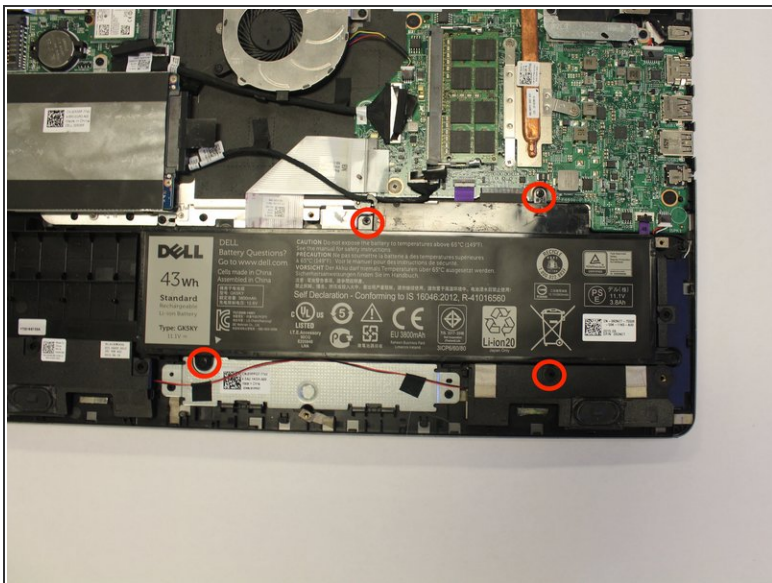
- [Phillips #1 Screwdriver](#) (1)
-

Step 1 — Battery



- Remove the ten 7mm Phillips #1 screws on the bottom cover.
- Remove the bottom cover.

Step 2



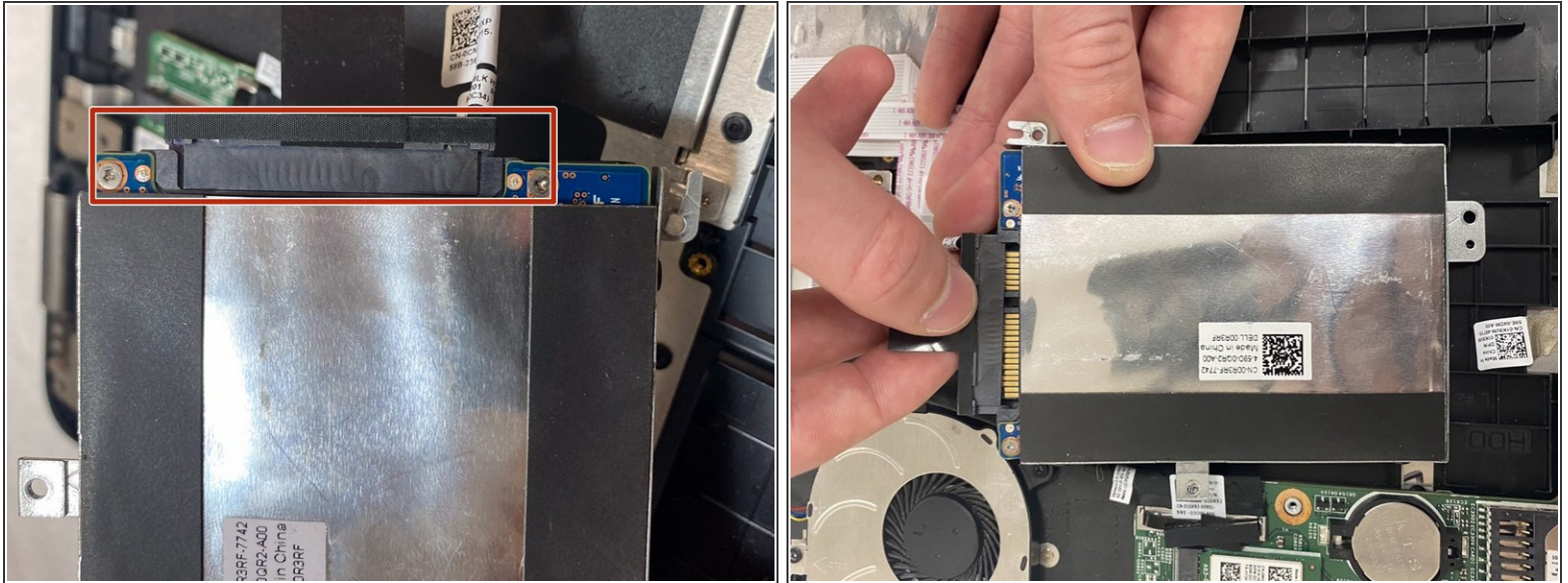
- Remove the four 3mm Phillips #1 screws holding the battery.
- Unhinge the connector cable to the battery.
- Remove the battery.

Step 3 — Hard-Drive



- Remove the three 3mm Phillips #1 screws connecting the hard drive to the laptop.

Step 4



- Disconnect the highlighted SATA cable from the hard drive.

Step 5



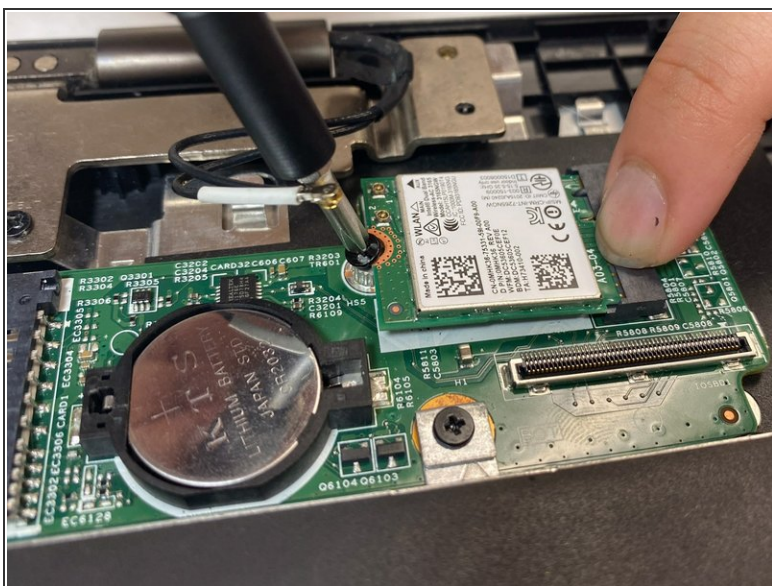
- Remove the four 3mm Phillips #1 screws of the hard drive. Both sides look identical.

Step 6



- Remove the hard drive (right) from its frame (left).

Step 7 — Wifi Card



- Remove the wide-brimmed 3mm Phillips #1 screw connecting the Wifi Card.
- Remove the Wifi Card.

To reassemble your device, follow these instructions in reverse order.