



Dell Inspiron 8600 Keyboard Replacement

To replace the keyboard, follow this guide

Written By: Perry



INTRODUCTION

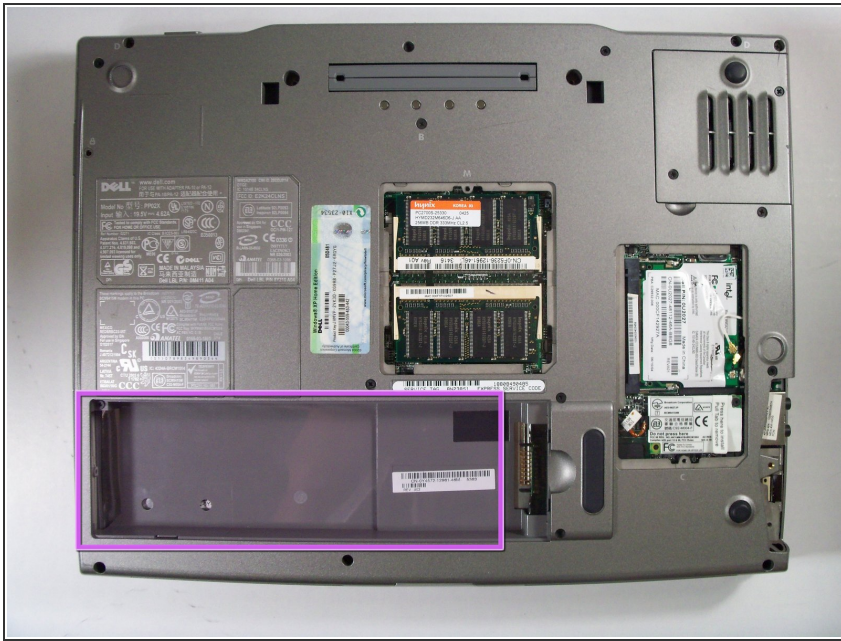
If you are having difficulties with the keyboard, please follow this guide.



TOOLS:

- [Phillips #1 Screwdriver](#) (1)
-

Step 1 — Battery



- Remove the battery from the bottom of the laptop.
- Please click on the following link for further instruction on how to remove the battery. [Dell Inspiron 9100 Battery Replacement](#)
- ⓘ It is important to remove the battery so that you will not be electrocuted while working with the computer's hardware.

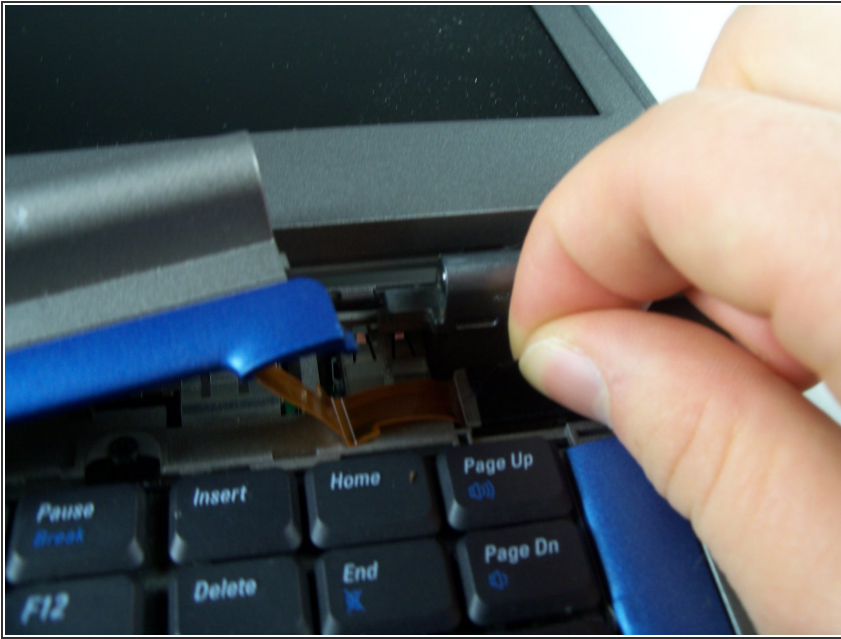
Step 2 — Hinge Cover



- Insert a spludger into the notch at the far left side of the top blue panel and pry hinge cover off.
- Note: You may need to pry the other side off by inserting the spludger between the hinge and the top cover.

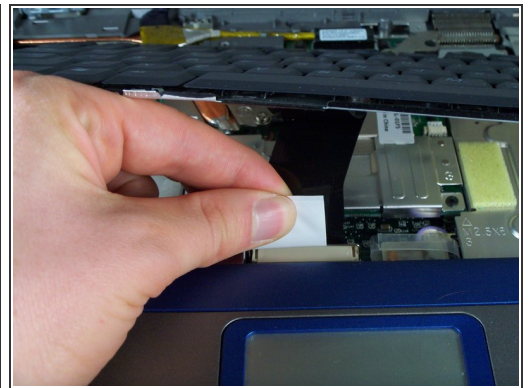
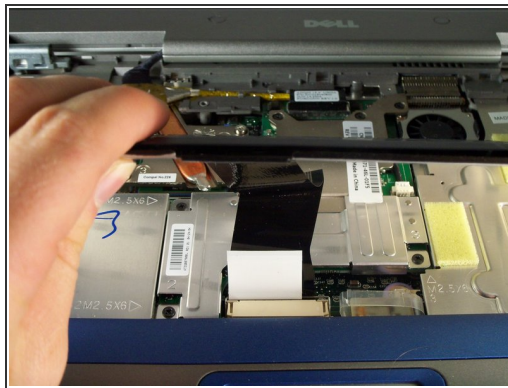
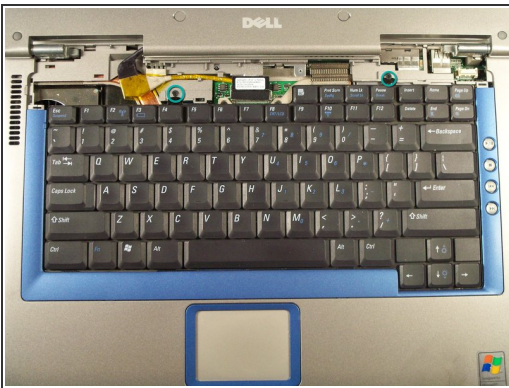
⚠ Be careful of wire attached to underside of the hinge cover.

Step 3



- Pull the small black tab on the right hand side of the laptop.
- The hinge cover has now been removed.

Step 4 — Keyboard



- Remove the screws at the top of the keyboard as indicated indicated.
- ⚠ Do not just lift up, there is a tab underneath the keyboard that is still connected to the mother board.
- You will need to pull out the white tab underneath the keyboard upwards until it pops out of its socket.
 - The keyboard should be easily removable at this point.

To reassemble your device, follow these instructions in reverse order.