



Dell Inspiron 8600 LCD Replacement

Follow this guide to replace the LCD display.

Written By: Perry



INTRODUCTION

Follow this guide to remove the LCD Display.



TOOLS:

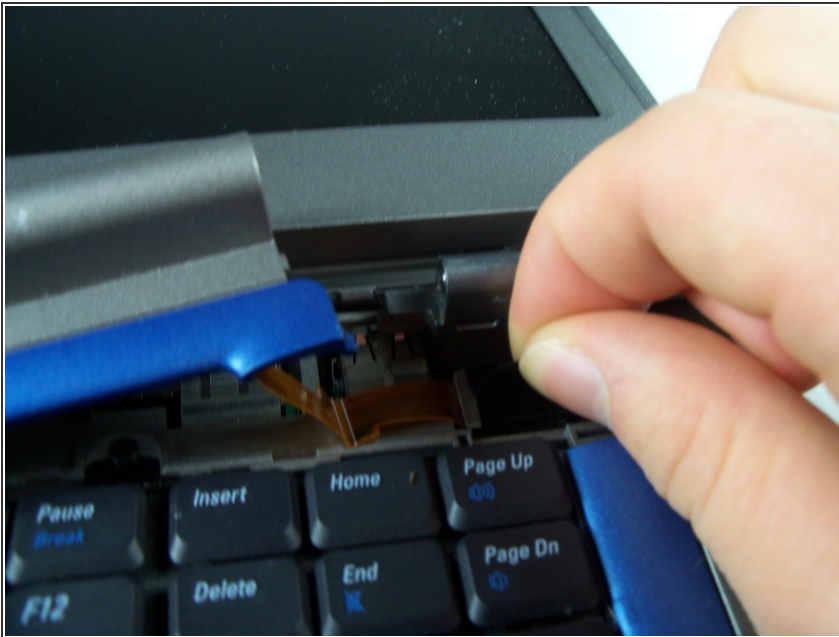
- [Phillips #00 Screwdriver](#) (1)
-

Step 1 — Hinge Cover



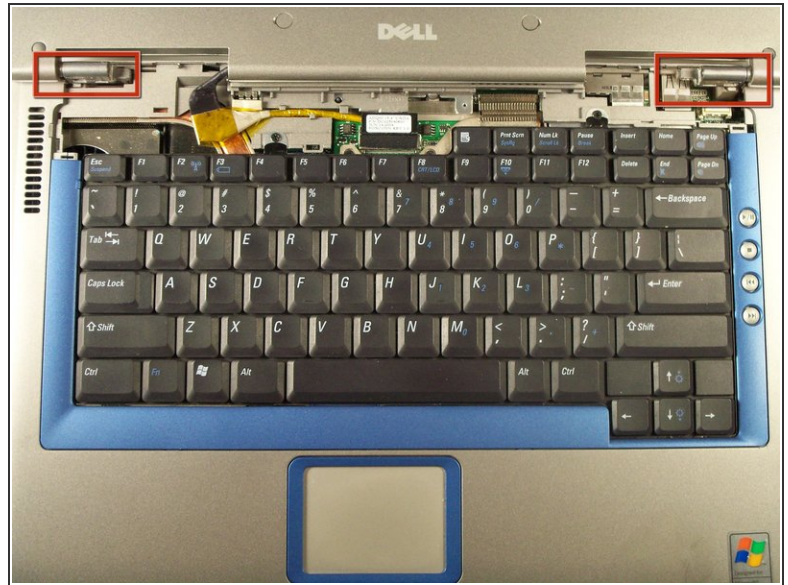
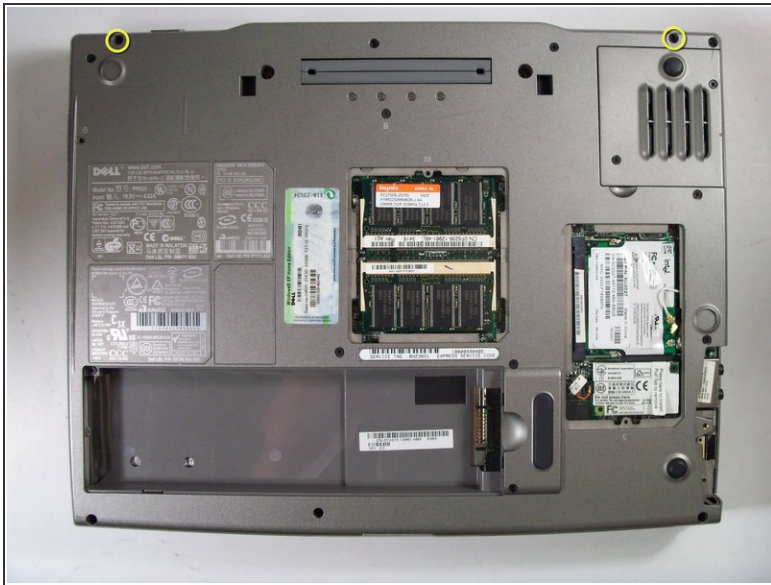
- Insert a spludger into the notch at the far left side of the top blue panel and pry hinge cover off.
 - Note: You may need to pry the other side off by inserting the spludger between the hinge and the top cover.
- ⚠ Be careful of wire attached to underside of the hinge cover.

Step 2



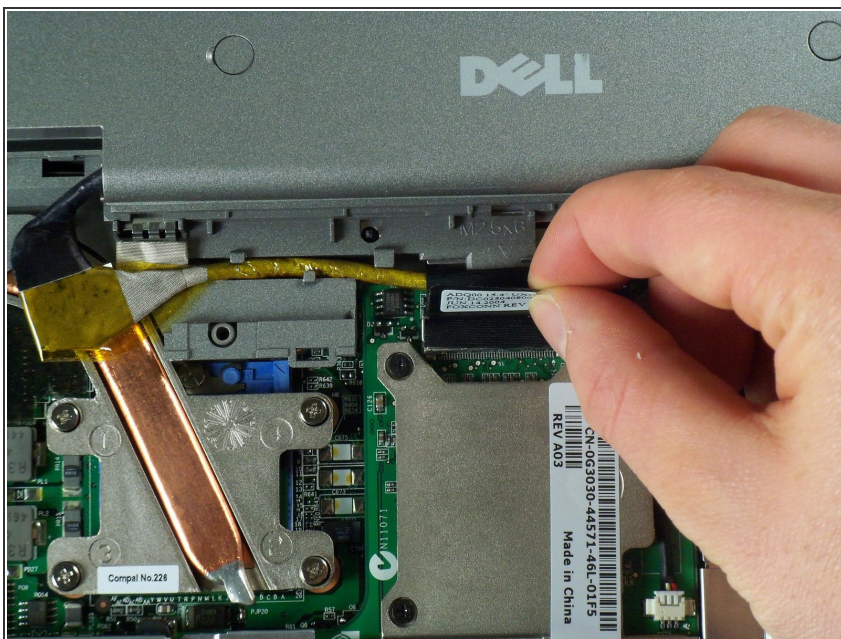
- Pull the small black tab on the right hand side of the laptop.
- The hinge cover has now been removed.

Step 3 — Display Module



- Flip the laptop over and remove the indicated screws.
- Flip the laptop back over.
- Find the two places where the display module is attached to the base of the computer.

Step 4



- Disconnect the video card from the display module by gently lifting upwards on the black tab.

Step 5



- Lift the display module directly upwards from the base of the computer.

Step 6



- The display module has been removed.

Step 7 — LCD



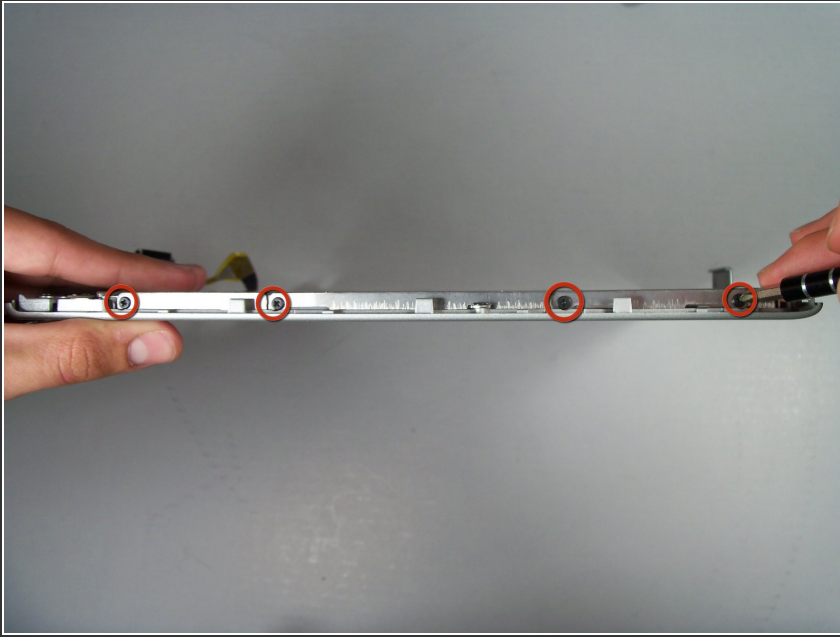
- First, remove the plastic tabs that are covering the interior screws.
- After removing the tabs, remove the interior screws using a #1 Philips Screwdriver.
- Note there are 8 tabs and 8 screws in total.

Step 8



- Now that the screws are removed, press the plastic casing inward to loosen the case. Then remove the plastic case from the monitor unit.

Step 9



- Using a Philips #1 screwdriver remove the screws holding the LCD in place.
- ⓘ Note there are 8 screws in total for this step, 4 on each side of the unit.

Step 10



- Remove the broken LCD unit, and replace with new unit.

To reassemble your device, follow these instructions in reverse order.