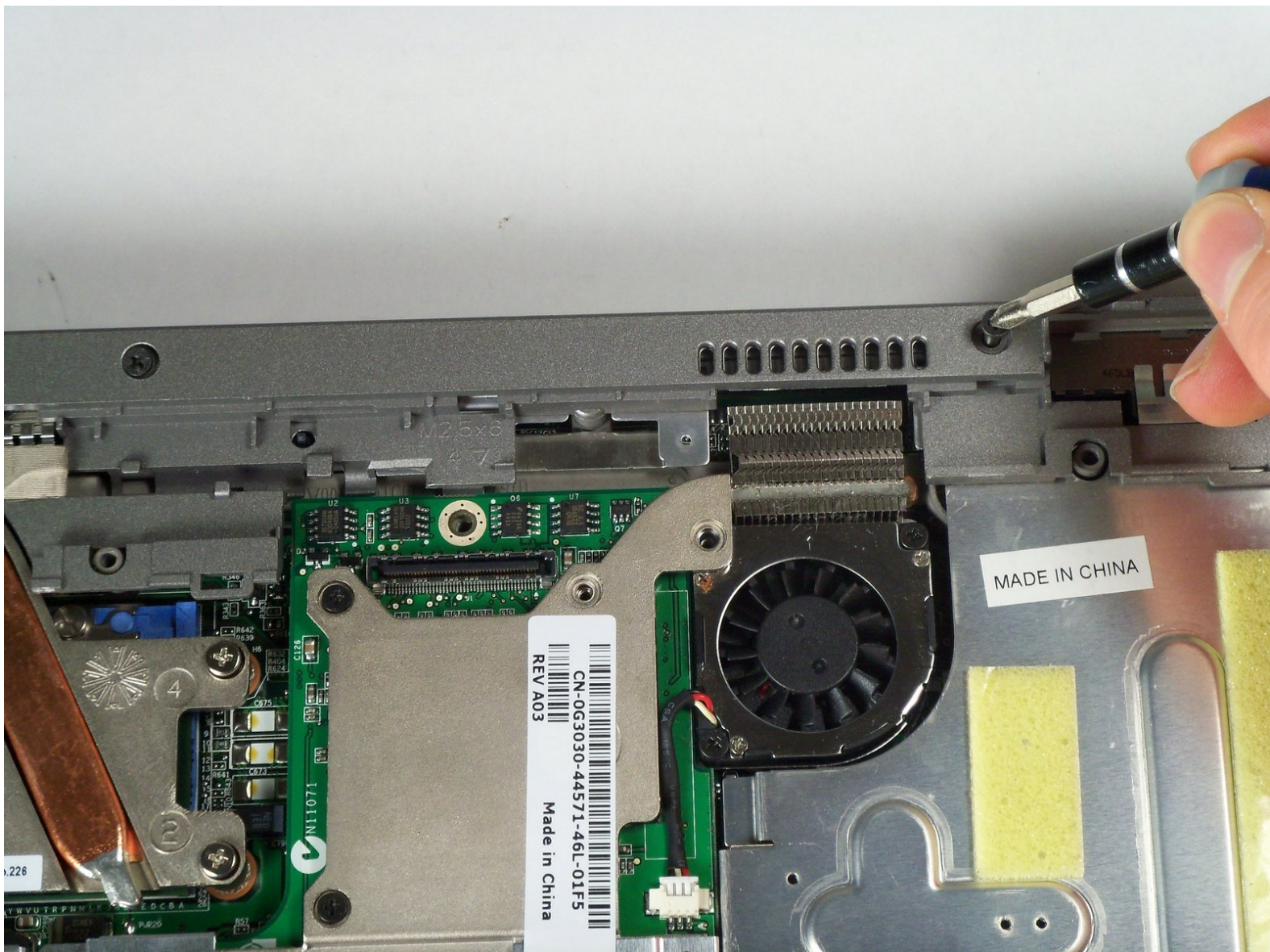




Dell Inspiron 8600 Lower Case Replacement

This guide will show you how to replace a damaged lower case.

Written By: John Nesthus



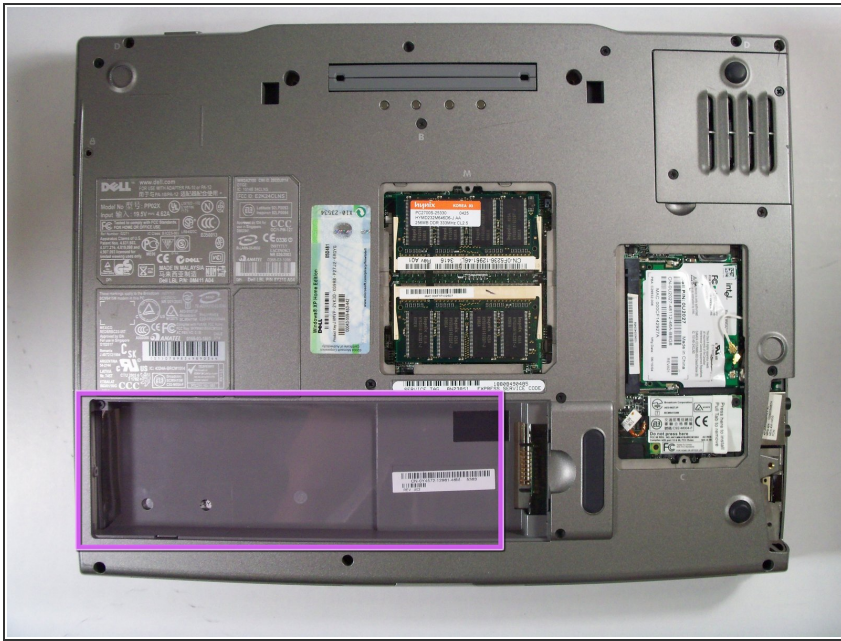
INTRODUCTION

We are going to show you how to remove the lower case, how to remove the components, how to put them back in and finally how to attach the upper case back onto the lower case.

TOOLS:

- [Phillips #1 Screwdriver](#) (1)
-

Step 1 — Battery



- Remove the battery from the bottom of the laptop.
- Please click on the following link for further instruction on how to remove the battery. [Dell Inspiron 9100 Battery Replacement](#)
- ⓘ It is important to remove the battery so that you will not be electrocuted while working with the computer's hardware.

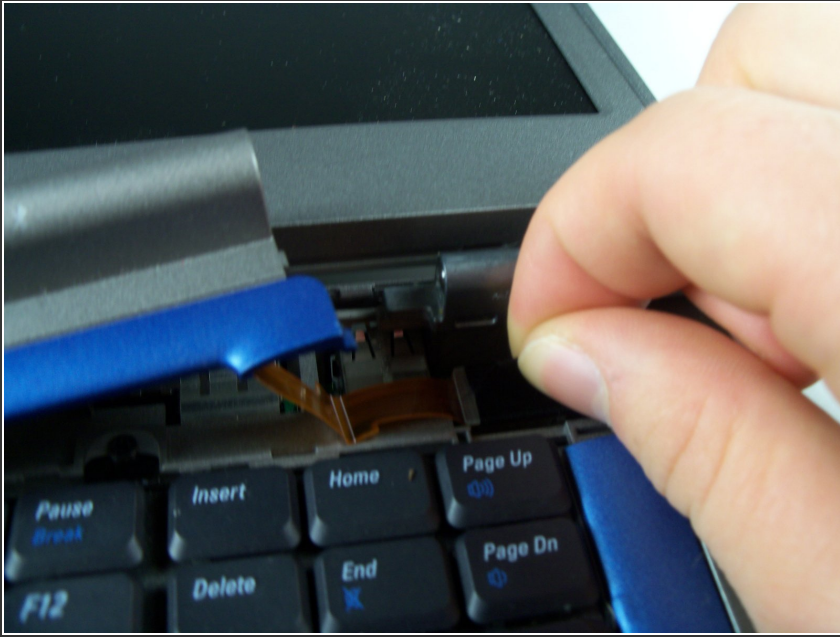
Step 2 — Hinge Cover



- Insert a spludger into the notch at the far left side of the top blue panel and pry hinge cover off.
- Note: You may need to pry the other side off by inserting the spludger between the hinge and the top cover.

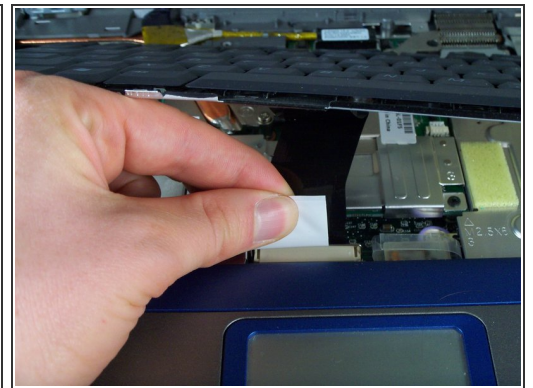
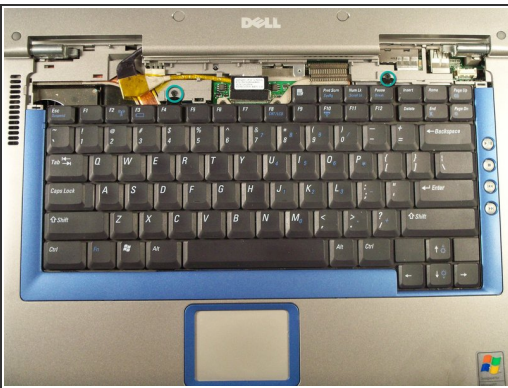
⚠ Be careful of wire attached to underside of the hinge cover.

Step 3



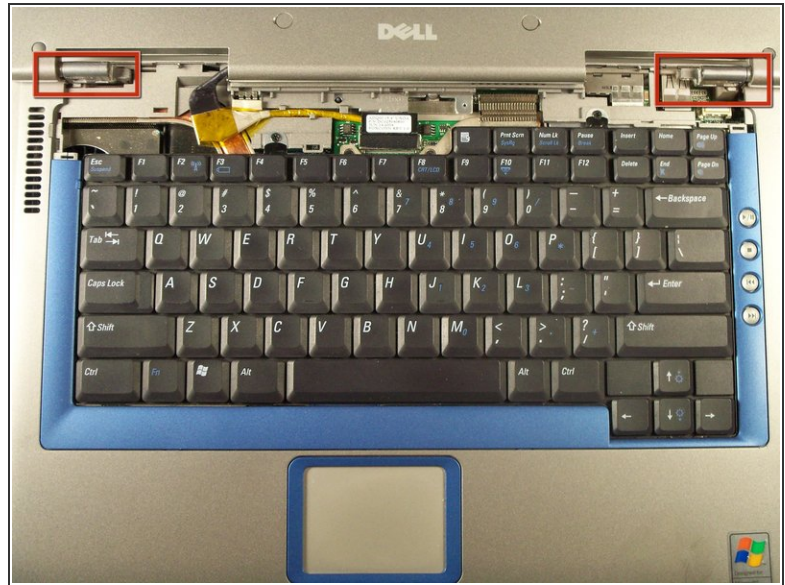
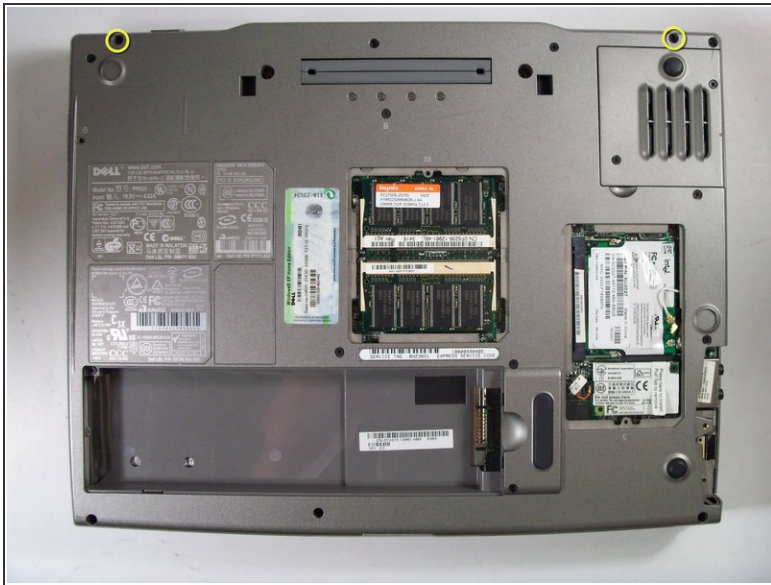
- Pull the small black tab on the right hand side of the laptop.
- The hinge cover has now been removed.

Step 4 — Keyboard



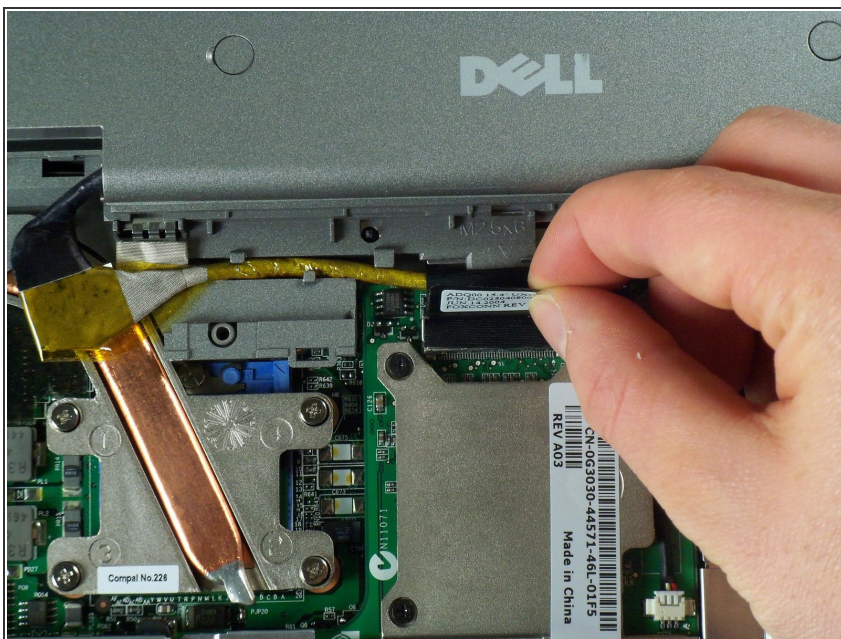
- Remove the screws at the top of the keyboard as indicated indicated.
- ⚠ Do not just lift up, there is a tab underneath the keyboard that is still connected to the mother board.
- You will need to pull out the white tab underneath the keyboard upwards until it pops out of its socket.
 - The keyboard should be easily removable at this point.

Step 5 — Display Module



- Flip the laptop over and remove the indicated screws.
- Flip the laptop back over.
- Find the two places where the display module is attached to the base of the computer.

Step 6



- Disconnect the video card from the display module by gently lifting upwards on the black tab.

Step 7



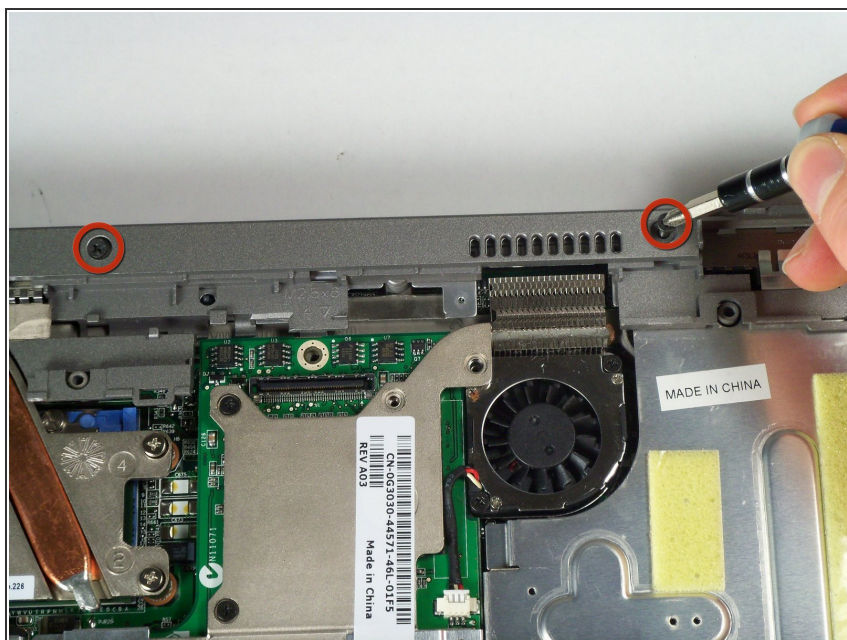
- Lift the display module directly upwards from the base of the computer.

Step 8



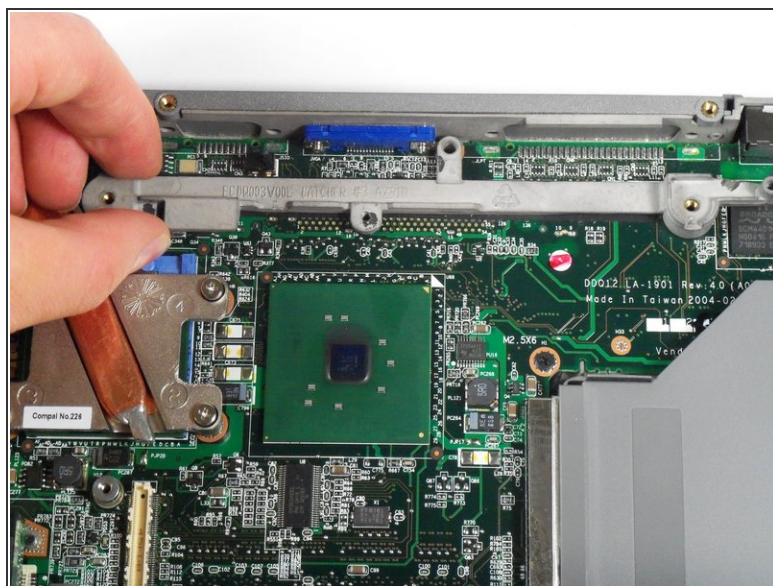
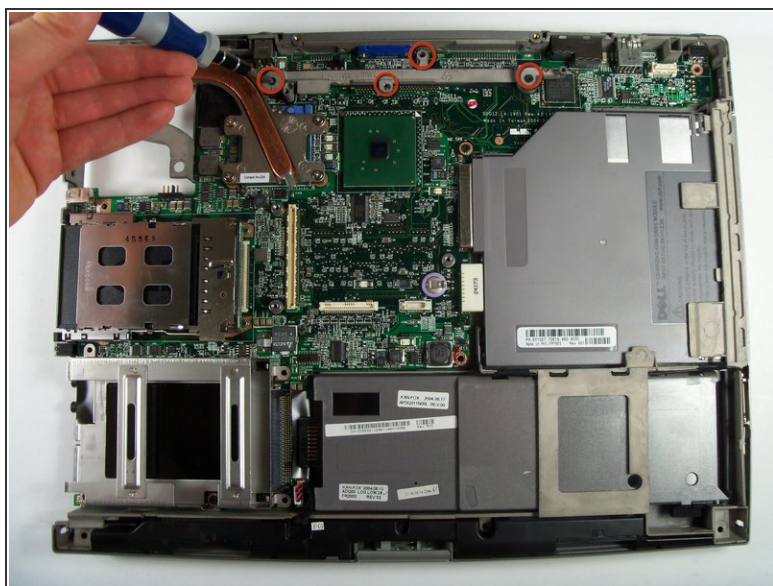
- The display module has been removed.

Step 9 — Lower Case



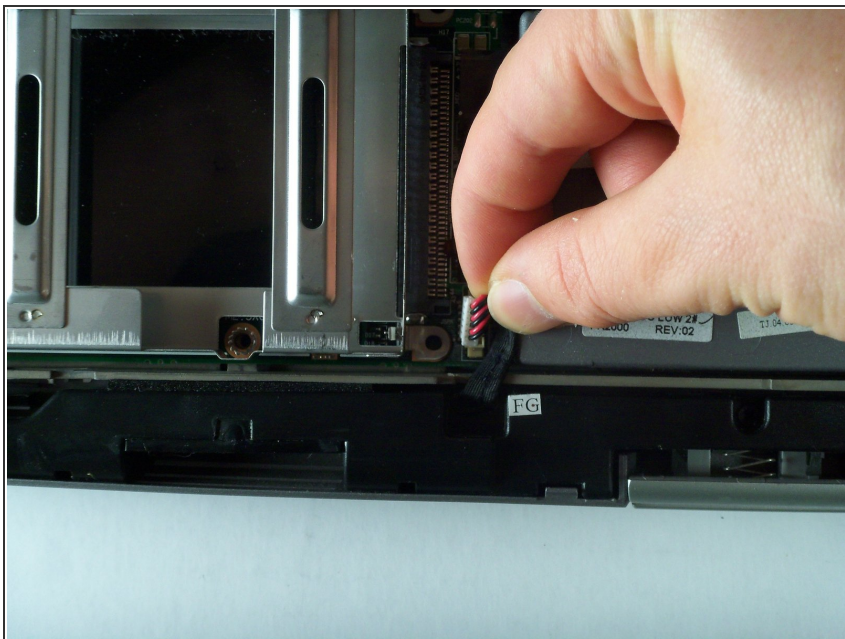
- Remove the two screws holding down the upper case.

Step 10



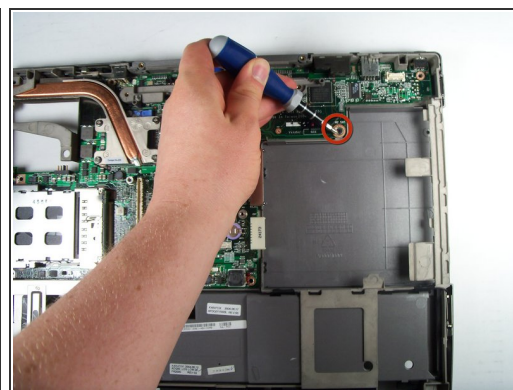
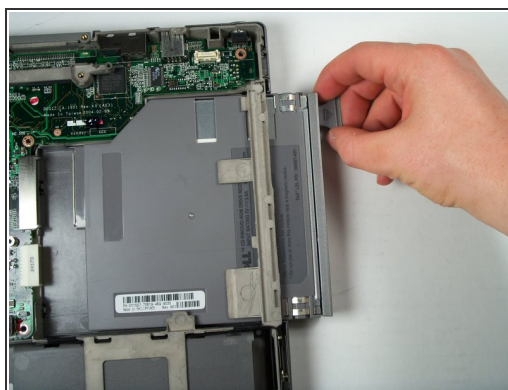
- Remove the metal bar which connects the motherboard to the lower case.

Step 11



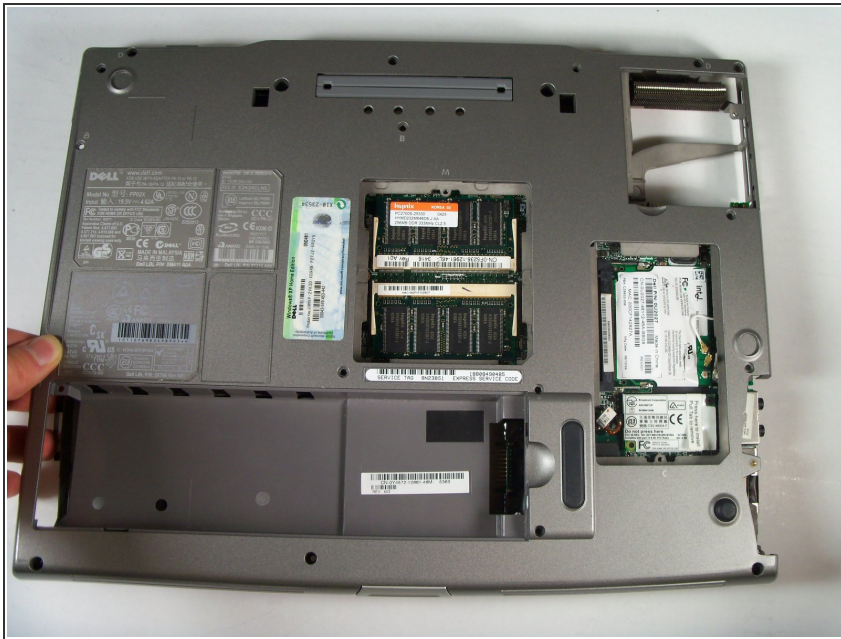
- Disconnect the optical disk drive by gently pulling upward.

Step 12



- Remove the optical disc drive by pushing a small release button on the side of the laptop and then pulling it.
- This will uncover one final screw that will need to be removed.

Step 13



- You can now pop off the lower case for replacing.

To reassemble your device, follow these instructions in reverse order.