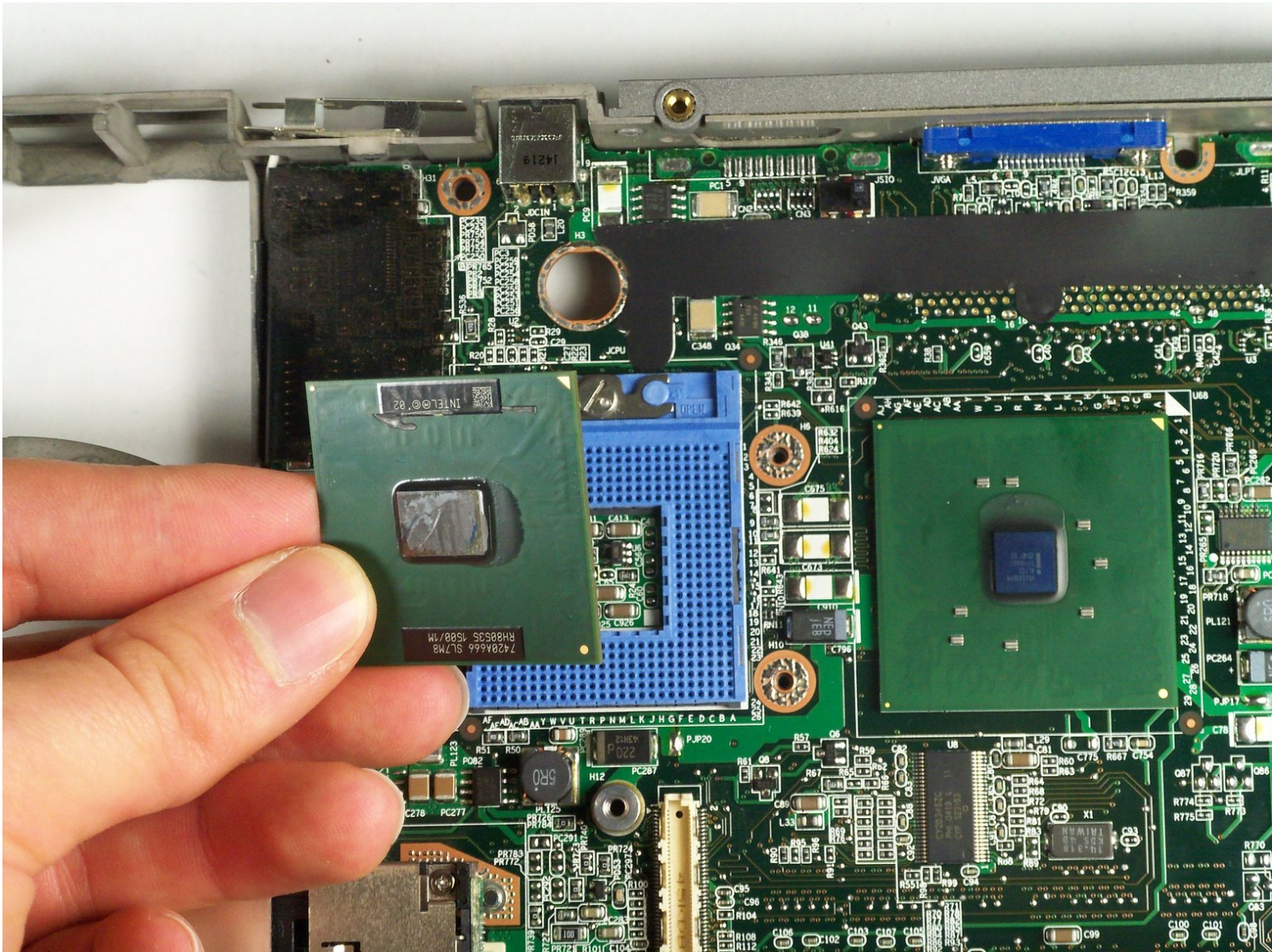




# Dell Inspiron 8600 Processor (CPU) Replacement

This guide will show you how to remove and replace the processor.

Written By: John Nesthus



---

## INTRODUCTION

This guide will show you how to remove and replace the processor unit.



### TOOLS:

- [Phillips #1 Screwdriver](#) (1)
-



## Step 1 — Battery



- Remove the battery from the bottom of the laptop.
- Please click on the following link for further instruction on how to remove the battery. [Dell Inspiron 9100 Battery Replacement](#)
- ⓘ It is important to remove the battery so that you will not be electrocuted while working with the computer's hardware.

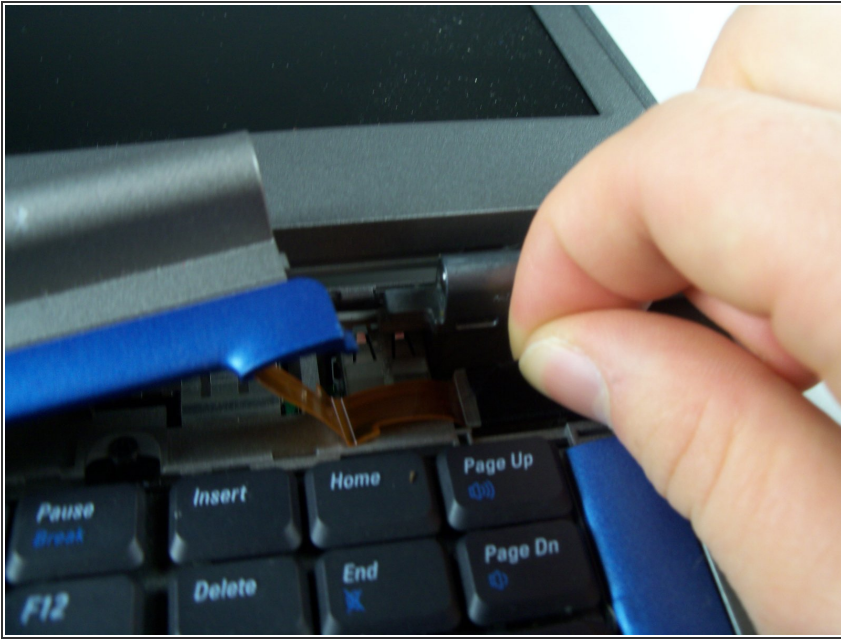
## Step 2 — Hinge Cover



- Insert a spludger into the notch at the far left side of the top blue panel and pry hinge cover off.
- Note: You may need to pry the other side off by inserting the spludger between the hinge and the top cover.

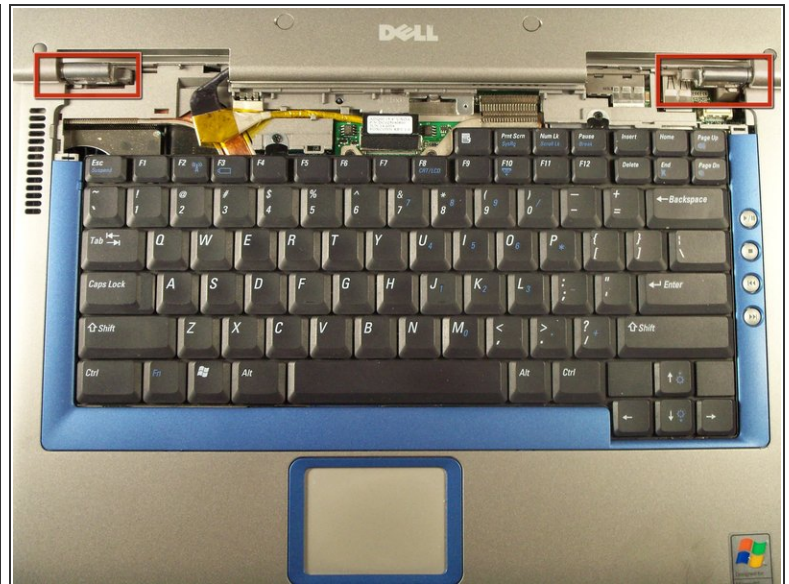
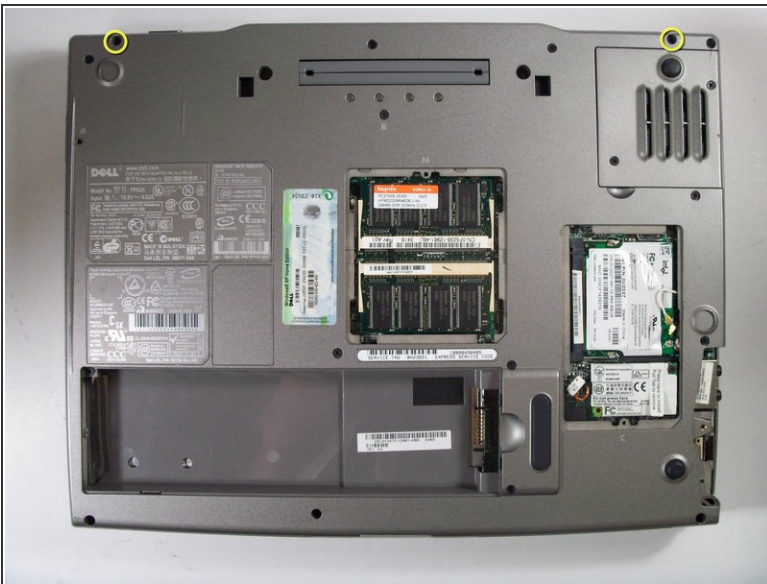
⚠ Be careful of wire attached to underside of the hinge cover.

### Step 3



- Pull the small black tab on the right hand side of the laptop.
- The hinge cover has now been removed.

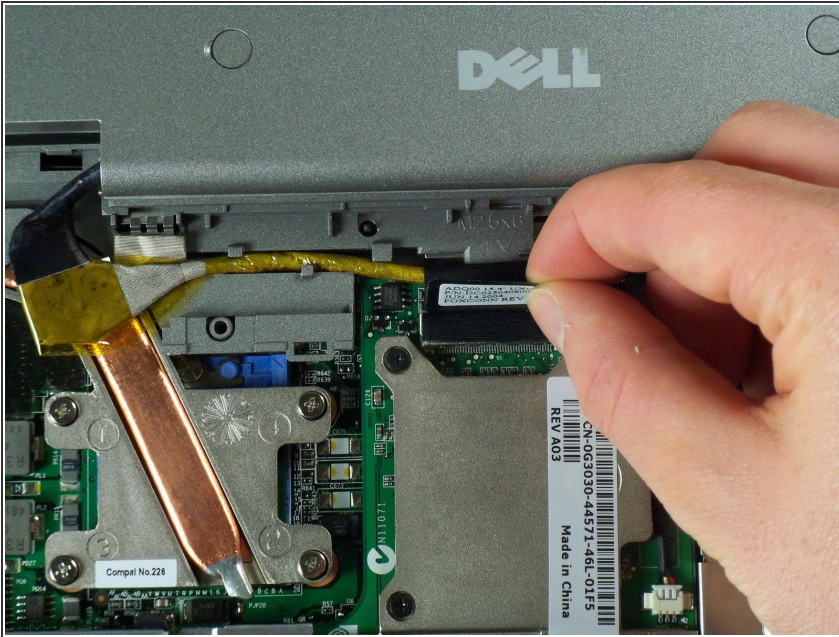
### Step 4 — Display Module



- Flip the laptop over and remove the indicated screws.
- Flip the laptop back over.
- Find the two places where the display module is attached to the base of the computer.



## Step 5



- Disconnect the video card from the display module by gently lifting upwards on the black tab.

## Step 6



- Lift the display module directly upwards from the base of the computer.

## Step 7



- The display module has been removed.

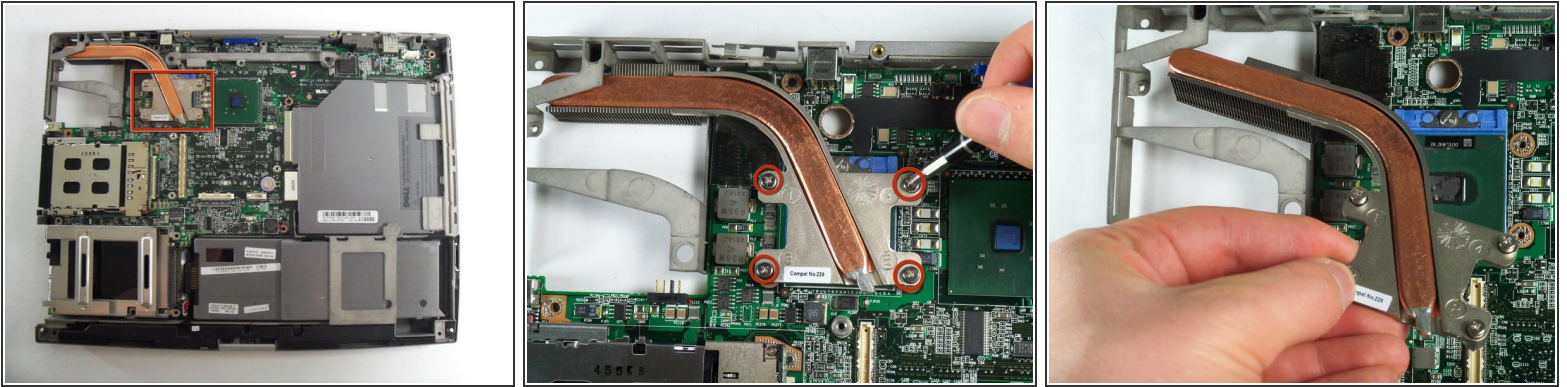
## Step 8 — Processor (CPU)



- Locate and remove the top two screws and all the screws on the underside holding the top case down.
- Gently pop off the top plastic case from the unit.
- Gently pop off the top plastic case from the unit.

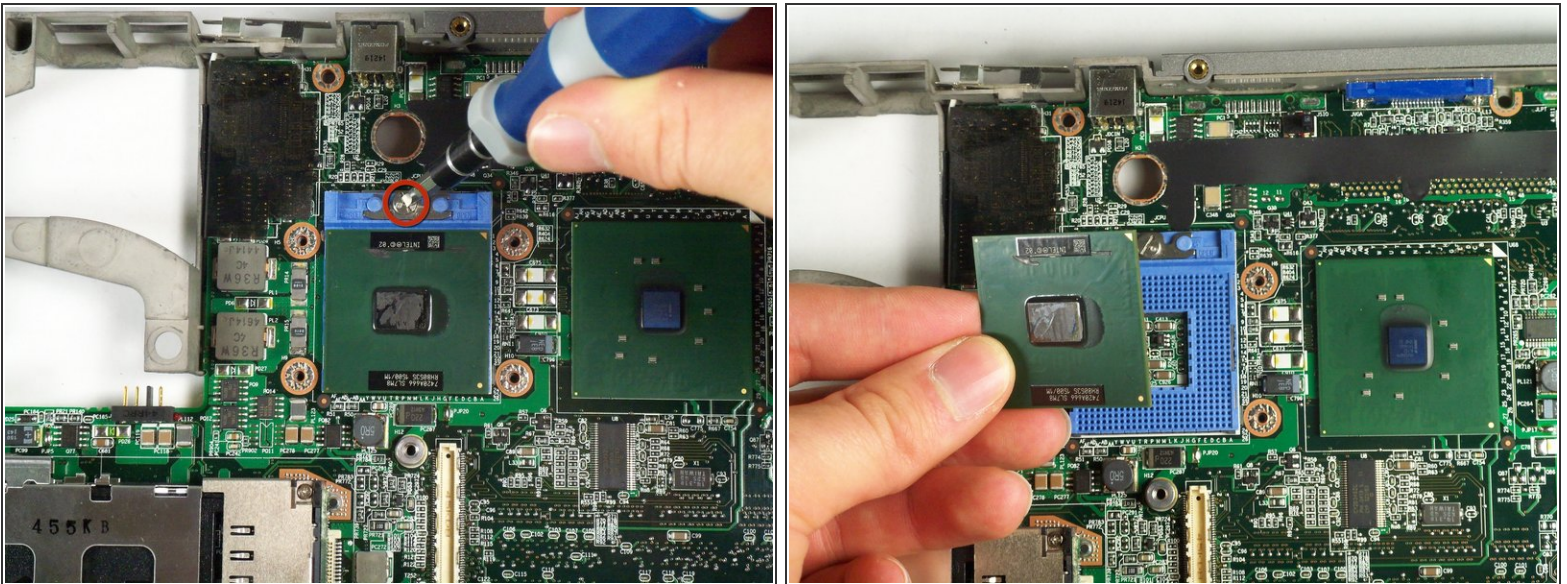


## Step 9



- Remove the copper heat sink that is housing the CPU by removing the four securing screws.
- Gently lift and remove the heat sink.

## Step 10



- Gently loosen but do not remove the screw, and lift the CPU.
- ❗ You will have to remove and replace the [How to Apply Thermal Paste](#) on the CPU base.
- You may now replace the CPU.

To reassemble your device, follow these instructions in reverse order.

This document was generated on 2019-10-07 10:45:32 PM (MST).

