



Written By: John Nesthus



---

## INTRODUCTION

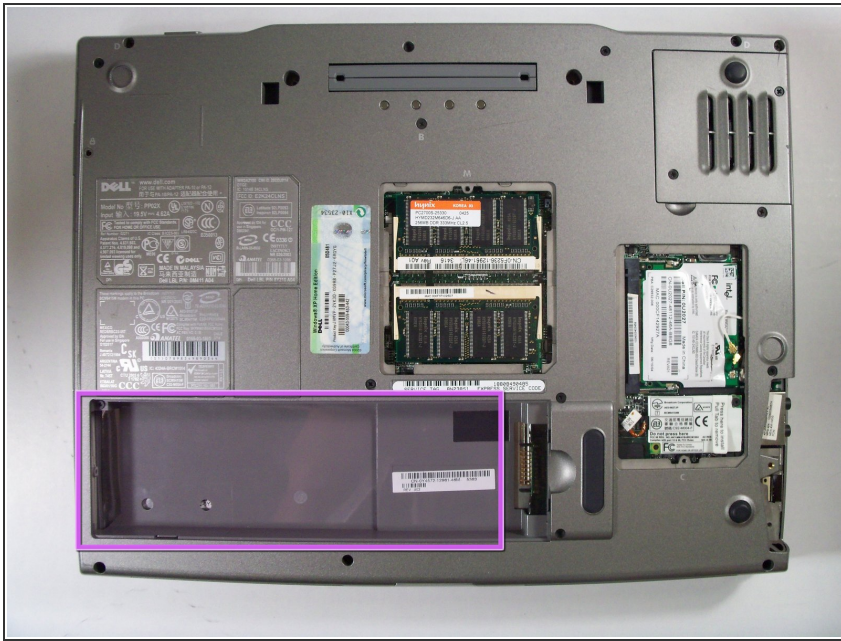
We will show you how to remove the display module which will then allow you to remove the upper case.



### TOOLS:

- [Phillips #1 Screwdriver](#) (1)
-

## Step 1 — Battery



- Remove the battery from the bottom of the laptop.
- Please click on the following link for further instruction on how to remove the battery. [Dell Inspiron 9100 Battery Replacement](#)
- ⓘ It is important to remove the battery so that you will not be electrocuted while working with the computer's hardware.

## Step 2 — Hinge Cover

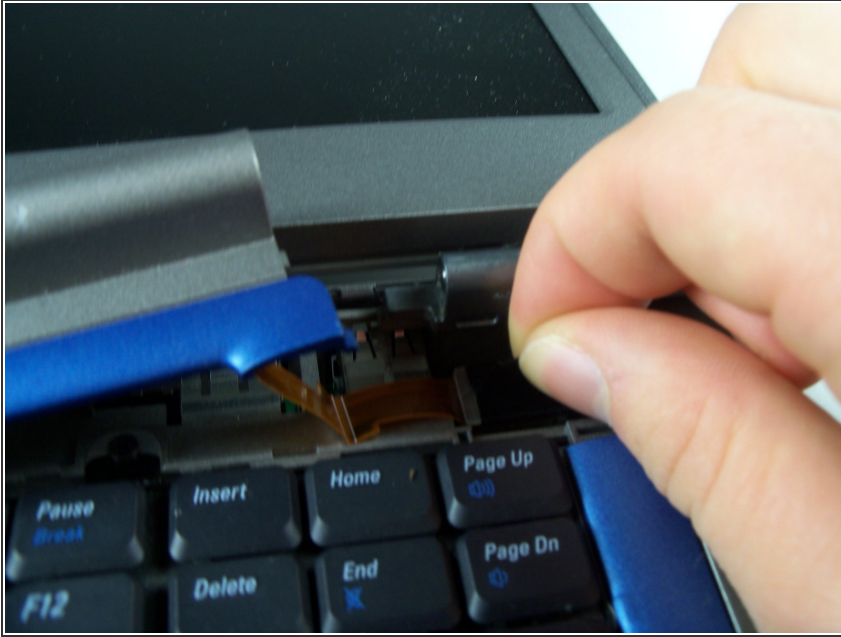


- Insert a spludger into the notch at the far left side of the top blue panel and pry hinge cover off.
- Note: You may need to pry the other side off by inserting the spludger between the hinge and the top cover.

⚠ Be careful of wire attached to underside of the hinge cover.

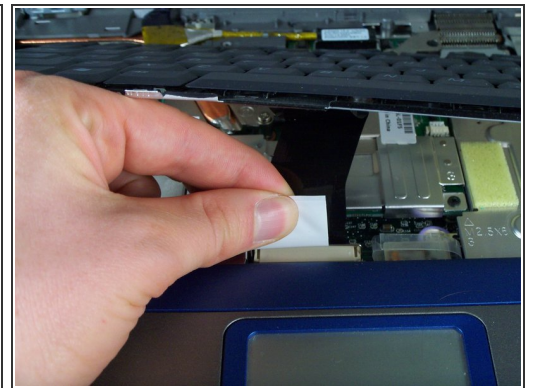
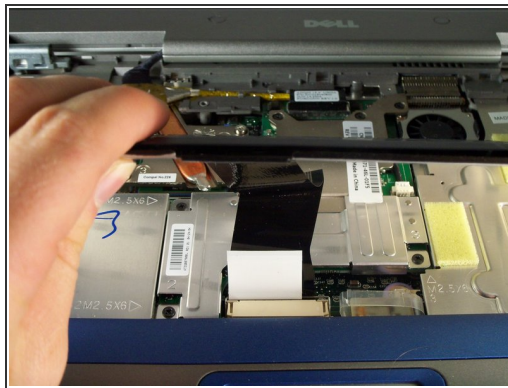
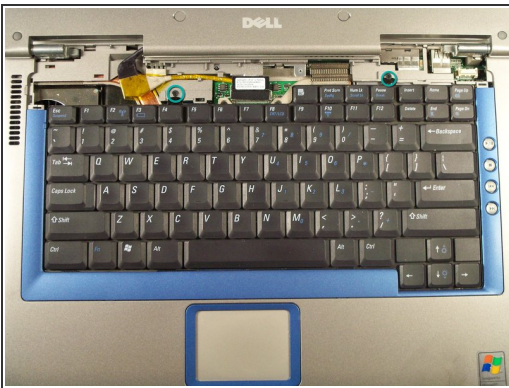


### Step 3



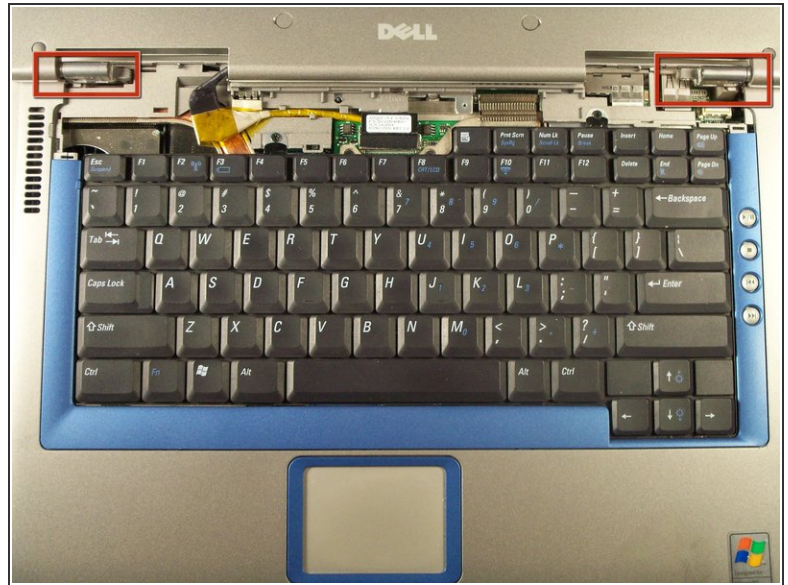
- Pull the small black tab on the right hand side of the laptop.
- The hinge cover has now been removed.

### Step 4 — Keyboard



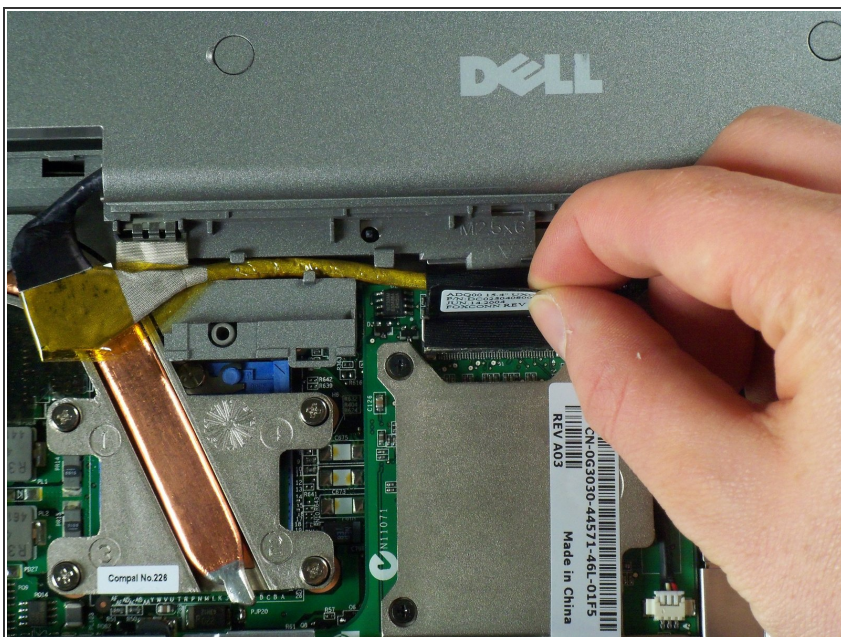
- Remove the screws at the top of the keyboard as indicated indicated.
- ⚠ Do not just lift up, there is a tab underneath the keyboard that is still connected to the mother board.
- You will need to pull out the white tab underneath the keyboard upwards until it pops out of its socket.
  - The keyboard should be easily removable at this point.

## Step 5 — Display Module



- Flip the laptop over and remove the indicated screws.
- Flip the laptop back over.
- Find the two places where the display module is attached to the base of the computer.

## Step 6



- Disconnect the video card from the display module by gently lifting upwards on the black tab.



## Step 7



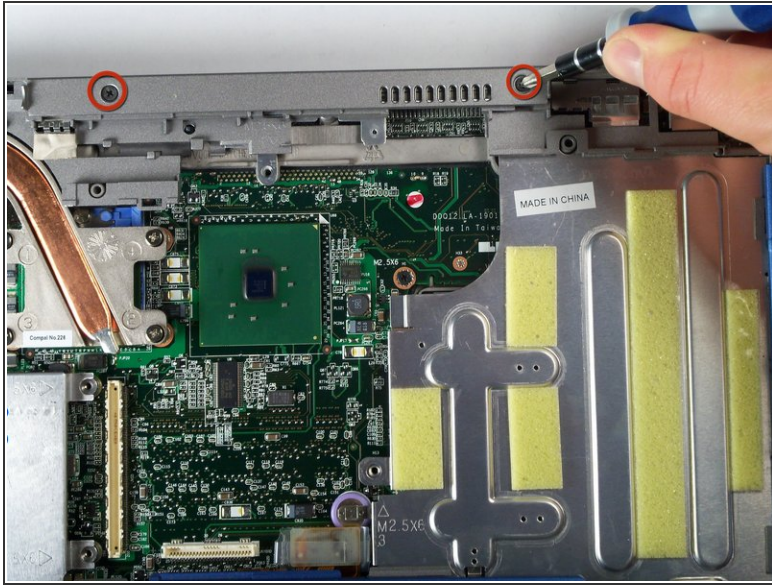
- Lift the display module directly upwards from the base of the computer.

## Step 8



- The display module has been removed.

## Step 9 — Upper Case



- Remove the two screws that hold the upper case.
- You can now pop up the upper case and replace.

To reassemble your device, follow these instructions in reverse order.