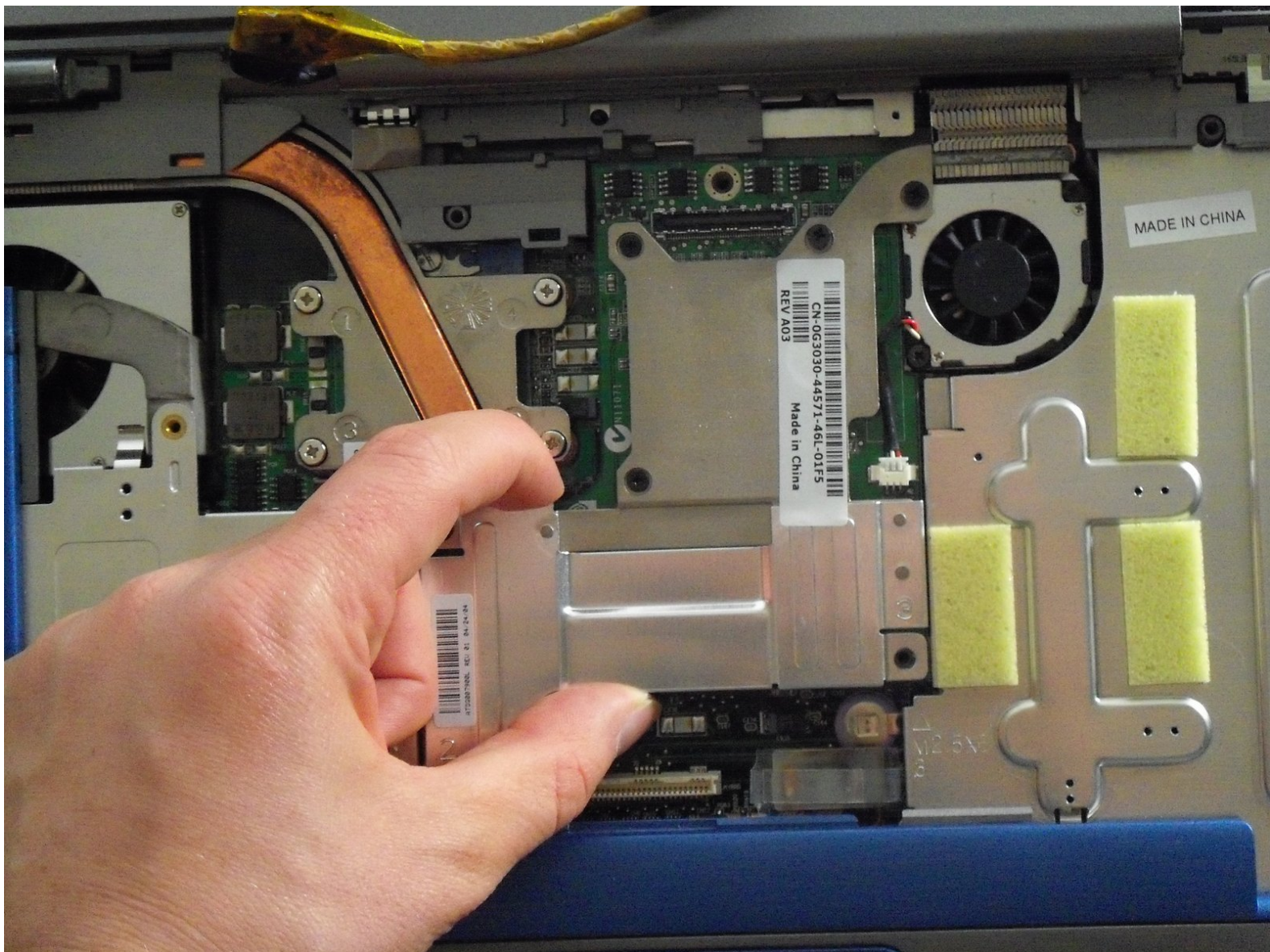




# Dell Inspiron 8600 Video Card Replacement

If the LCD screen is not working, it may be a problem with the video card.

Written By: Brian Murphy



---

## INTRODUCTION

If the LCD screen is not working, it may be a problem with the video card.

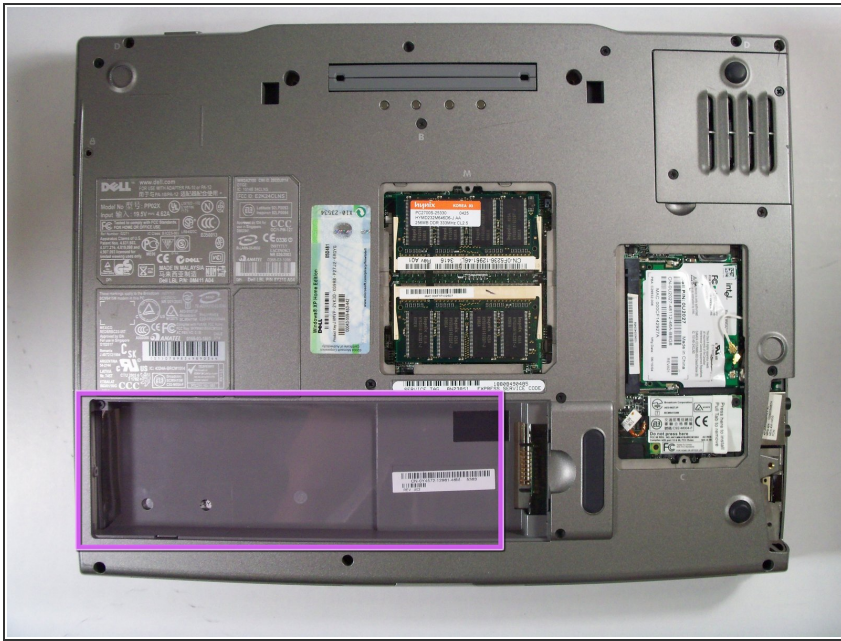


### TOOLS:

- [Phillips #1 Screwdriver](#) (1)
-



## Step 1 — Battery



- Remove the battery from the bottom of the laptop.
- Please click on the following link for further instruction on how to remove the battery. [Dell Inspiron 9100 Battery Replacement](#)
- ⓘ It is important to remove the battery so that you will not be electrocuted while working with the computer's hardware.

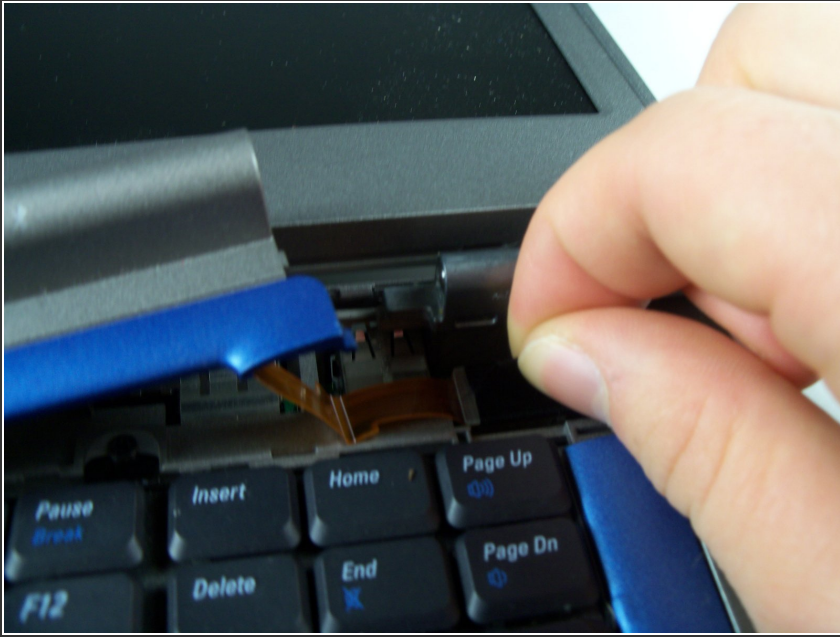
## Step 2 — Hinge Cover



- Insert a spludger into the notch at the far left side of the top blue panel and pry hinge cover off.
- Note: You may need to pry the other side off by inserting the spludger between the hinge and the top cover.

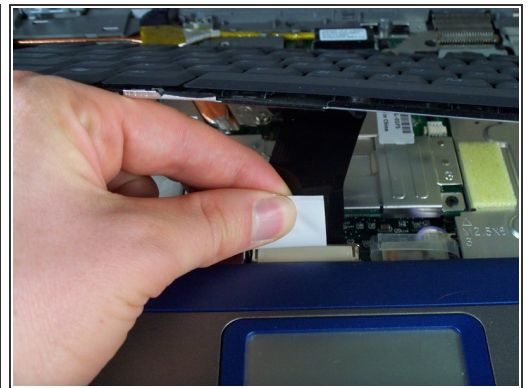
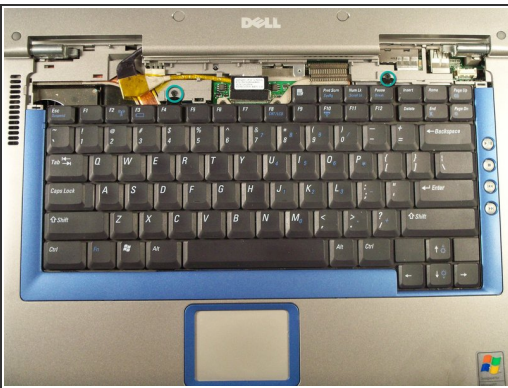
⚠ Be careful of wire attached to underside of the hinge cover.

### Step 3



- Pull the small black tab on the right hand side of the laptop.
- The hinge cover has now been removed.

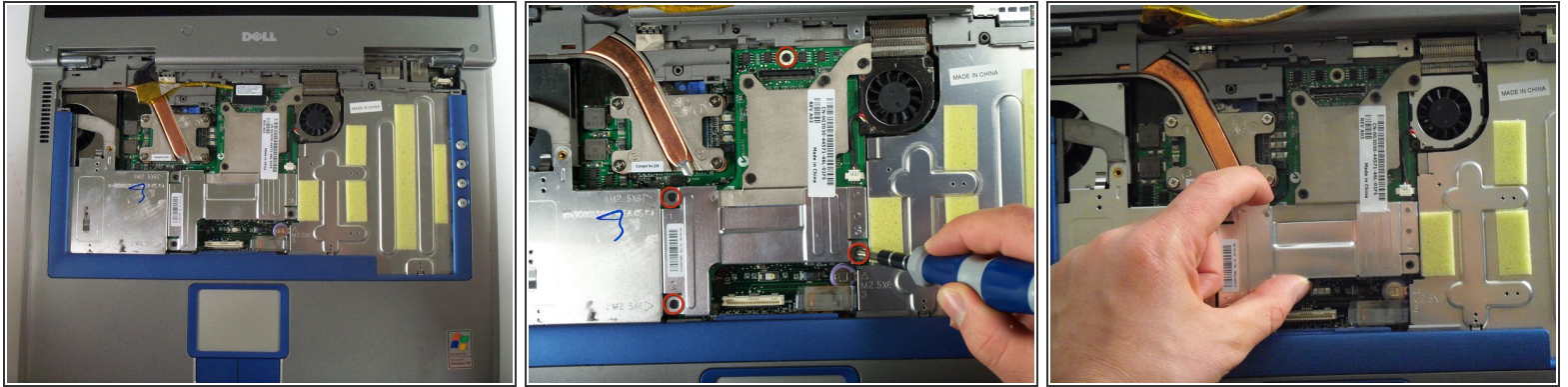
### Step 4 — Keyboard



- Remove the screws at the top of the keyboard as indicated indicated.
- ⚠ Do not just lift up, there is a tab underneath the keyboard that is still connected to the mother board.
- You will need to pull out the white tab underneath the keyboard upwards until it pops out of its socket.
  - The keyboard should be easily removable at this point.



## Step 5 — Video Card



- After removing the keyboard, locate and remove the labeled screws.
- Gently lift the Video Card unit for replacing.

To reassemble your device, follow these instructions in reverse order.