



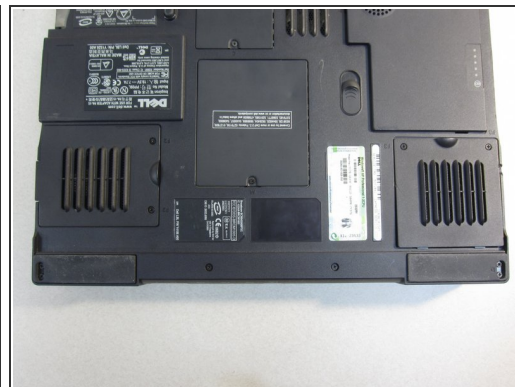
Dell Inspiron 9100 Optical Drive/Accessory Device Replacement

Remove CD/DVD drive, floppy drive, or secondary battery.

Written By: charlierefvem



Step 1 — Battery



- Unplug the laptop from the power adapter and turn the power off.

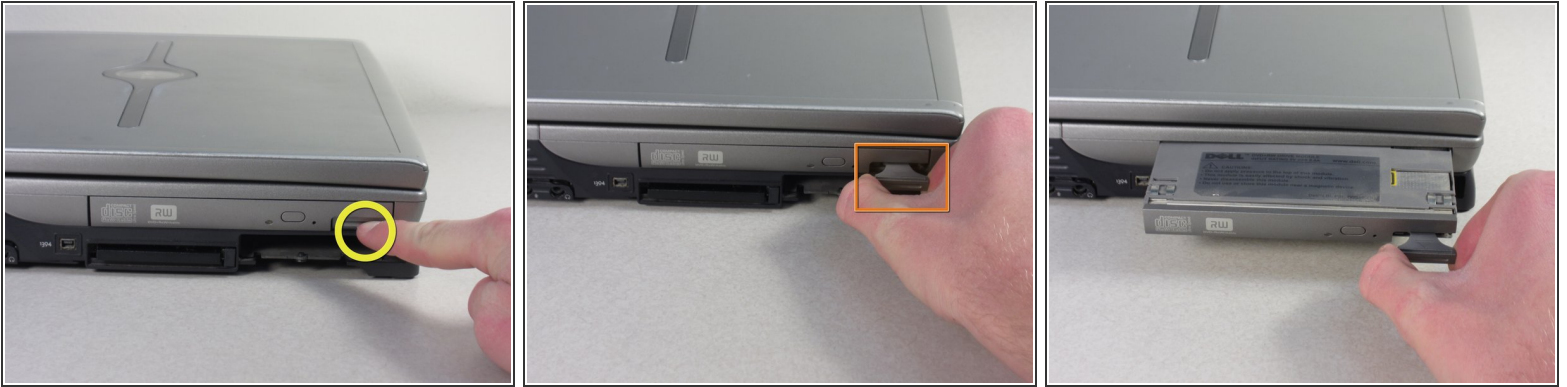
⚠ Failure to unplug laptop before proceeding could result in risk of electric shock!

Step 2



- Slide the battery-lock tab and hold.
- Flip the battery away from the chassis to remove it.

Step 3 — Optical Drive/Accessory Device



- Press the tab on the outside face of the optical drive to release a handle.
- Pull the handle to eject the optical drive unit from the slot, and slide it out.

To reassemble your device, follow these instructions in reverse order.