



# Dell Inspiron 9300 Modem Replacement

Replace the modem card.

Written By: Randy McMillan



---

# INTRODUCTION

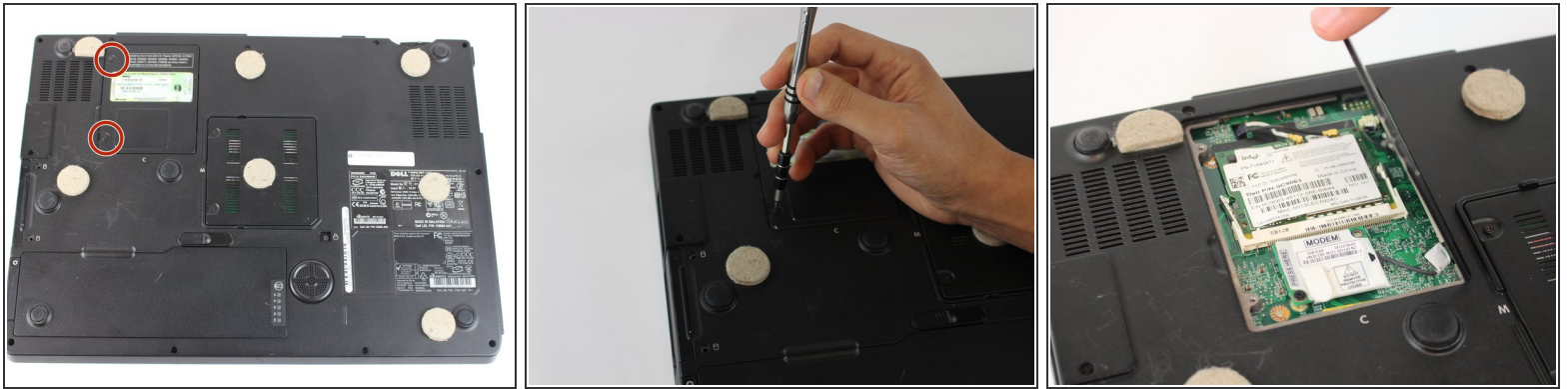
This guide describes how to access the modem card and replace it.



## TOOLS:

- [Phillips #0 Screwdriver](#) (1)
  - [iFixit Opening Tools](#) (1)
-

## Step 1 — Modem & WIFI Card Prerequisite



- Flip the computer over and place it on a clean level surface.
  - Loosen the screws using a size #0 Phillips screwdriver.
  - ⓘ The screws do not come completely out.
- ⚠ It is strongly recommended that the [Anti-Static Wrist Strap](#) is used to avoid damage to internal components.

## Step 2



- Once the screws are loose, open the panel using a plastic opening tool to access the components below.
- ① The modem card should be labeled MODEM. The WIFI card is larger than the modem and closer to the outer edge of the computer.



## Step 3 — Modem Card



- Remove the screw holding the card in place using a size #0 Phillips screwdriver.
- Gently unplug the card from the connecting black wire using a black spudger.
- ⓘ The modem can now be safely removed.

To reassemble your device, follow these instructions in reverse order.