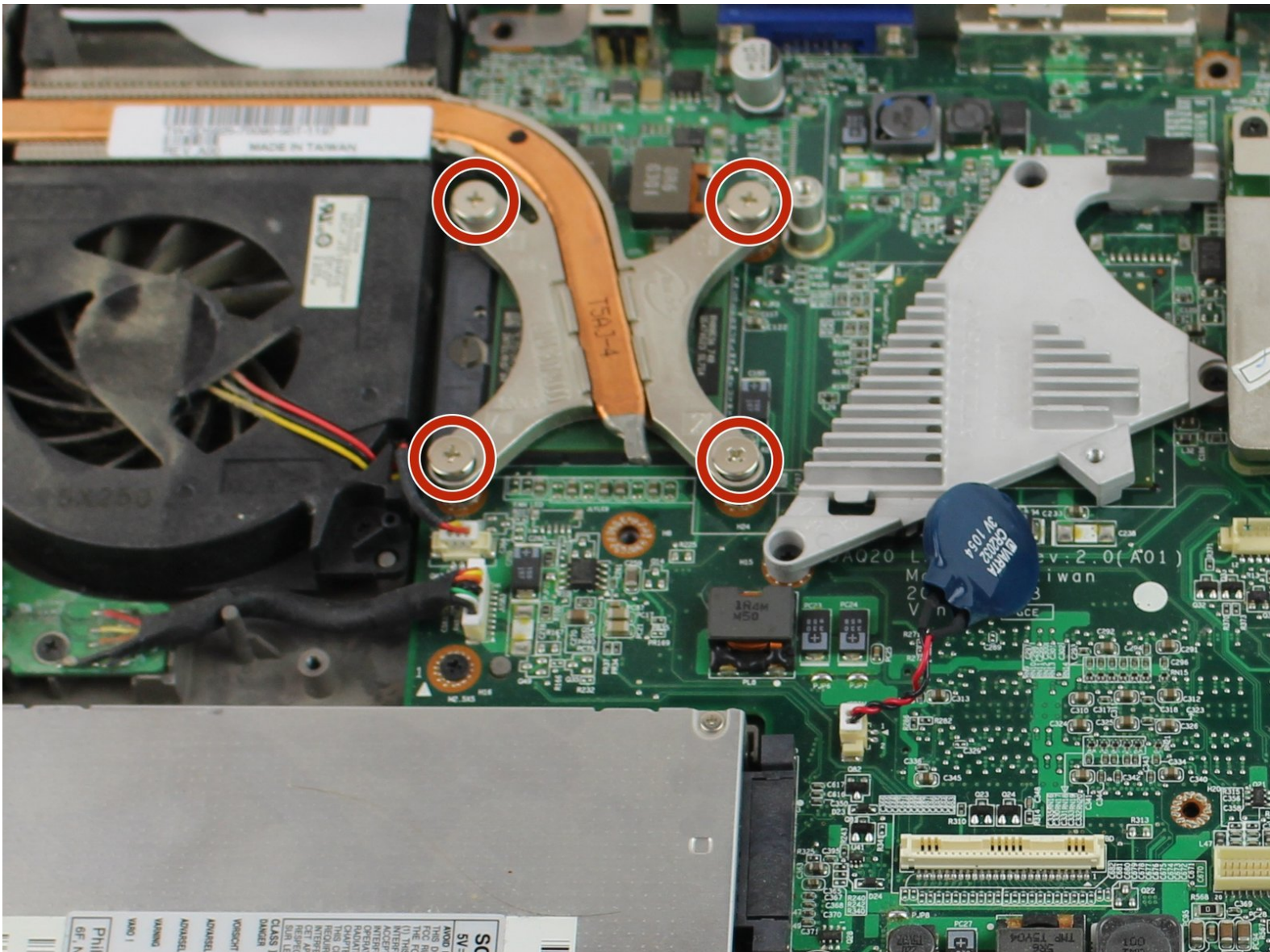




Dell Inspiron 9300 Processor Replacement

Replacing the Processor (CPU)

Written By: Steven Faulkner



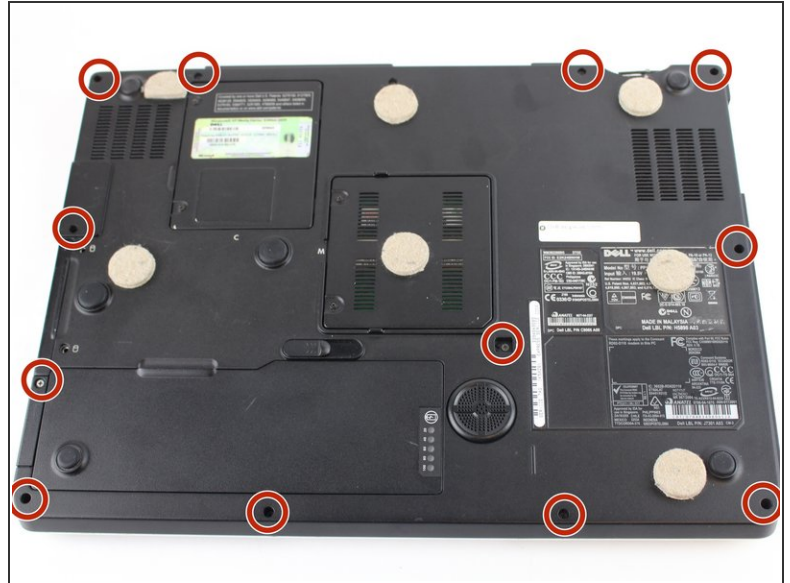
INTRODUCTION

This guide will demonstrate how to remove and replace you CPU.

TOOLS:

- [Heavy-Duty Spudger](#) (1)
 - [iFixit Opening Tools](#) (1)
 - [Phillips #0 Screwdriver](#) (1)
 - [Flathead 3/32" or 2.5 mm Screwdriver](#) (1)
-

Step 1 — Prerequisite Only



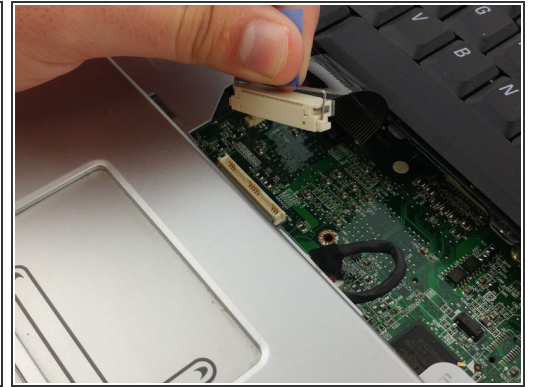
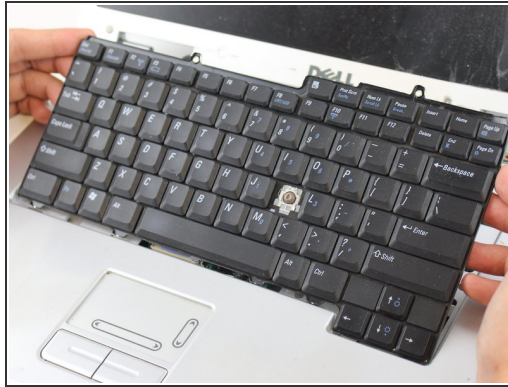
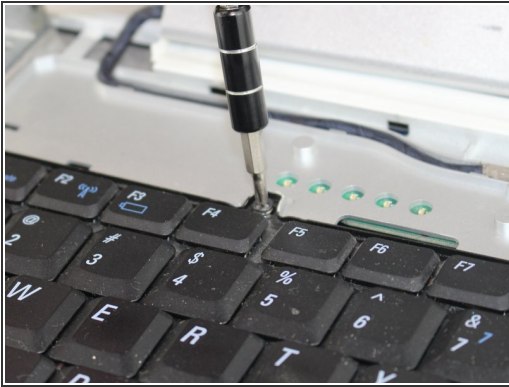
- Remove the battery prior to working on any internal components.
 - Remove the twelve 6mm Phillips screws from the bottom of the case.
- ⚠ Remove the battery before working on internal components to ensure a safe working environment.

Step 2



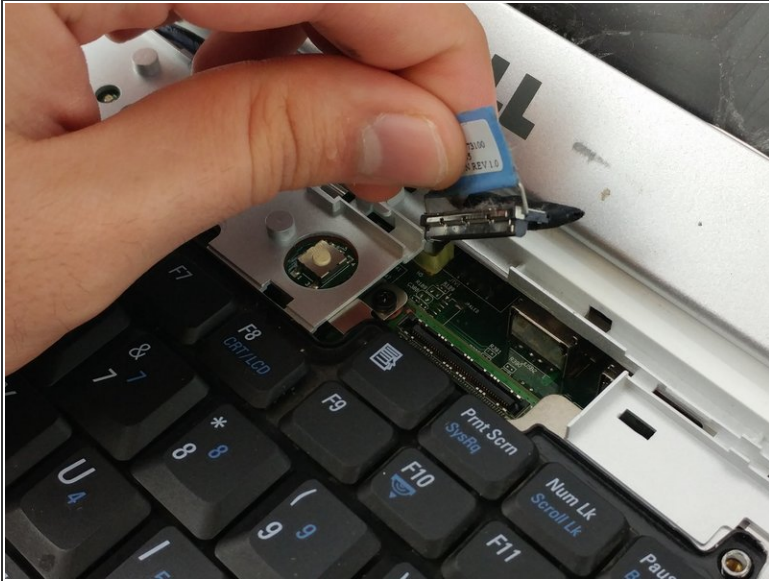
- Gently pry away the silver bezel above the keyboard and below the display using a spudger.
- ⓘ Start on the right hand side, where there is a notch in the bezel for easiest removal.

Step 3



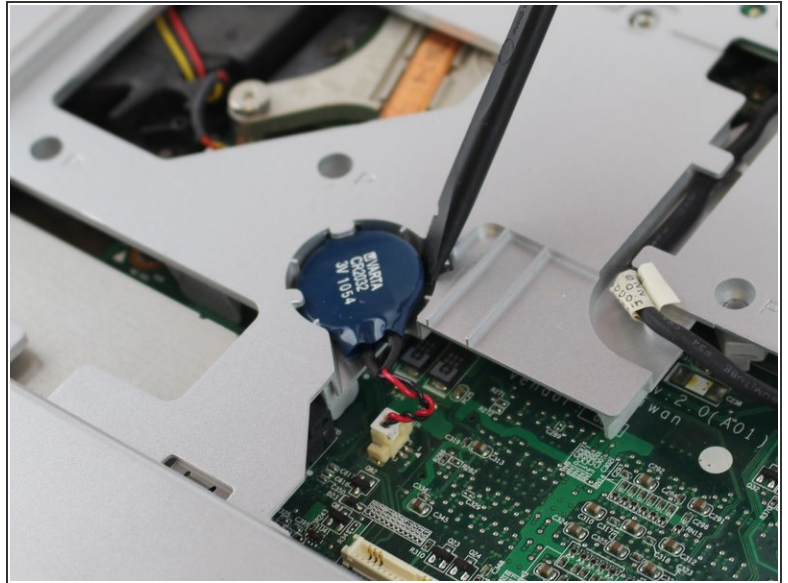
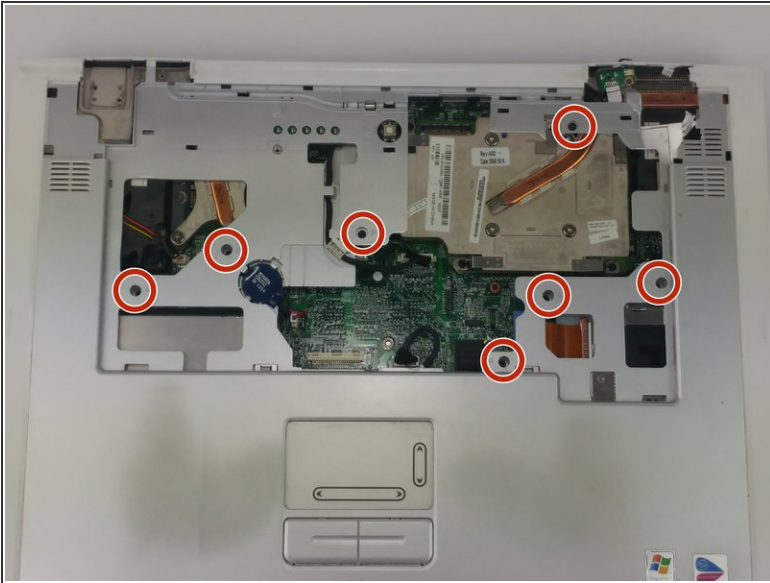
- Remove the two 5mm Phillips screws retaining the keyboard.
- Pull the keyboard up and toward the monitor to reveal the ribbon cable beneath.
- Firmly grasp the blue tape attached to the keyboard ribbon cable connector and pull upward away from the motherboard.

Step 4



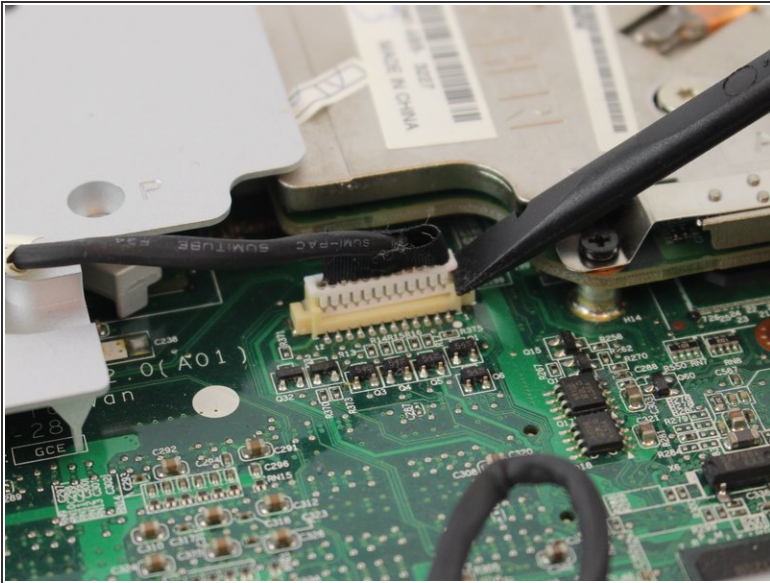
- Firmly grasp the blue tape attached to the LCD display ribbon cable connector and pull upward away from the motherboard.
 - Remove the two 5mm Phillips screws holding the display hinge on both sides of the laptop.
- ⚠ Support the display as you loosen the hinges, to avoid the screen falling and breaking.

Step 5



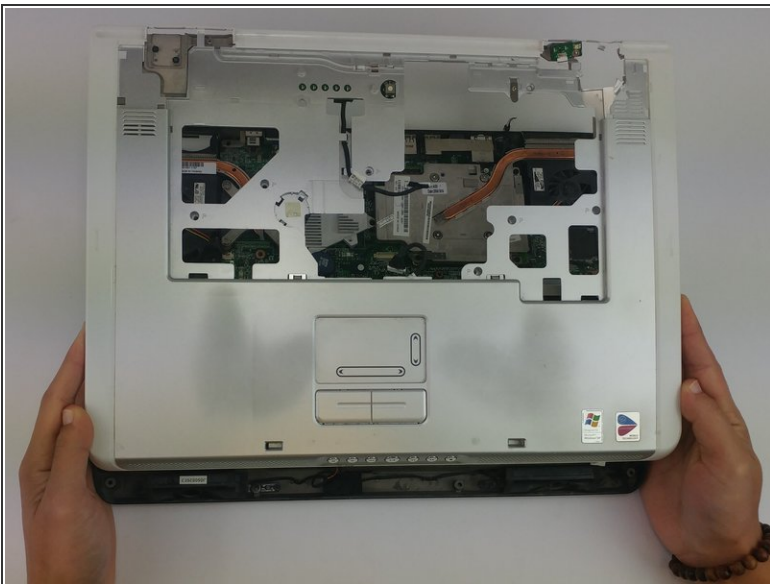
- Remove the seven 6mm Phillips screws holding the trackpad/palm rest to the motherboard.
- Gently pry the CMOS battery out of its retaining clip using a spudger.

Step 6



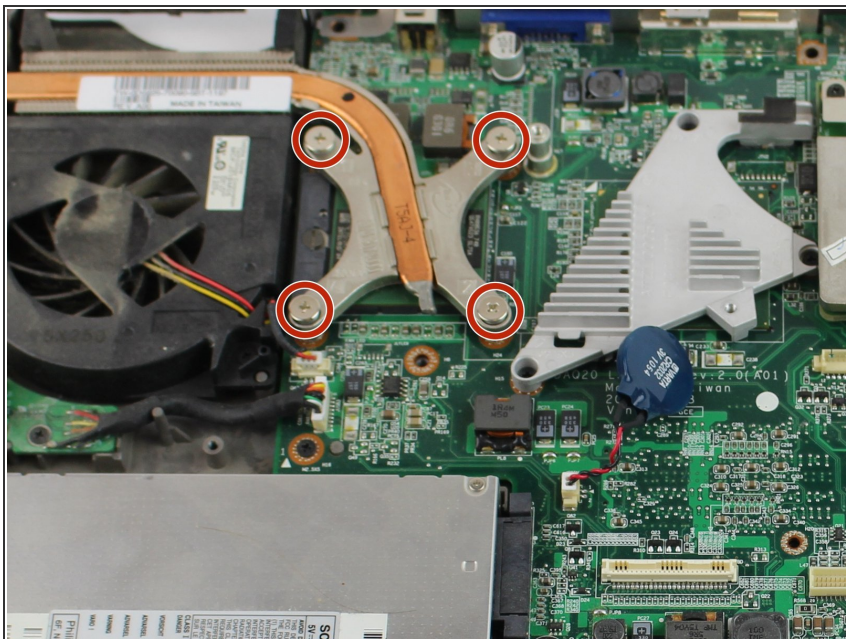
- Remove the low profile connector for the keyboard status lights located next to the video card heat sink using a spudger.
- Remove the trackpad ribbon cable from the motherboard using a spudger.

Step 7



- Pull up and away on the track pad to expose the internal components below.

Step 8 — Processor



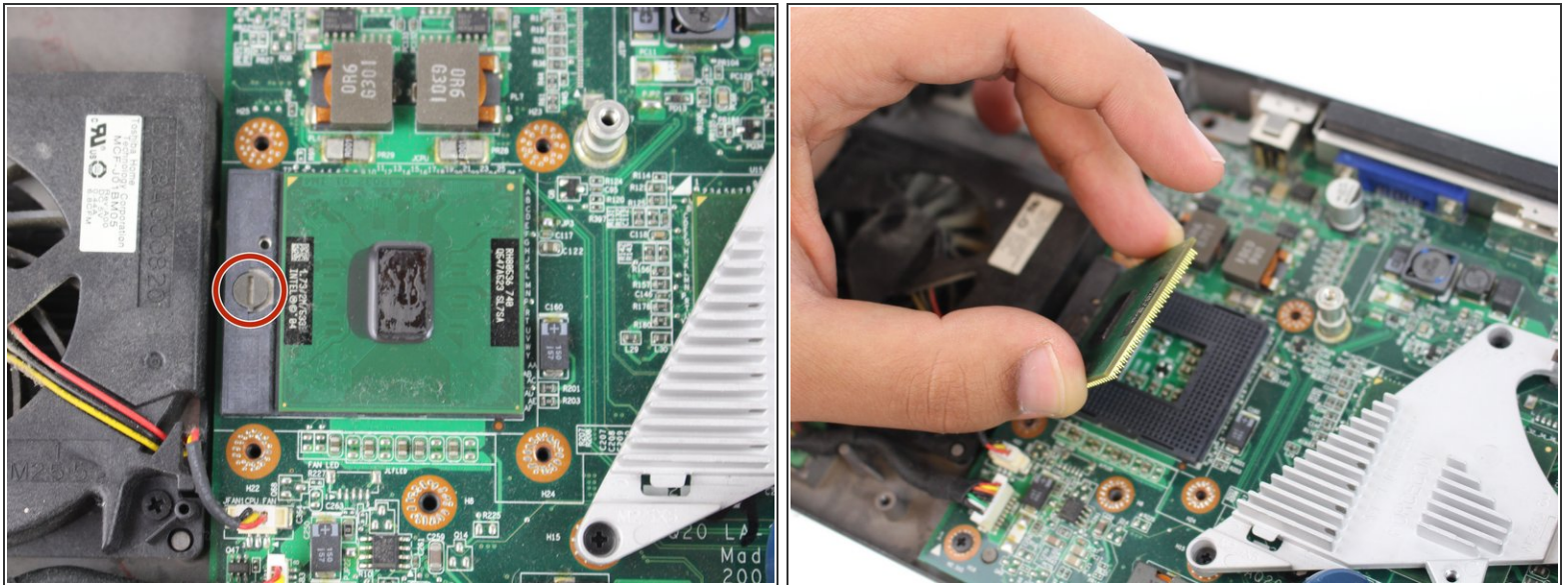
- Loosen the four silver Phillips screws in a criss-cross pattern retaining the heatsink to the cpu.

Step 9



- Gently lift up on the heatsink to reveal the CPU below.

Step 10



- Gently loosen but do not remove the flathead screw.
- Lift the CPU away from the motherboard, taking care to not damage the gold pins.
- ⓘ You will have to remove and replace the [How to Apply Thermal Paste](#) on the CPU base.

To reassemble your device, follow these instructions in reverse order.