



Dell Inspiron 9300 Speaker System Replacement

Here is a step by step guide to replace the sound system in your Dell Inspiron 9300.

Written By: Steven Faulkner



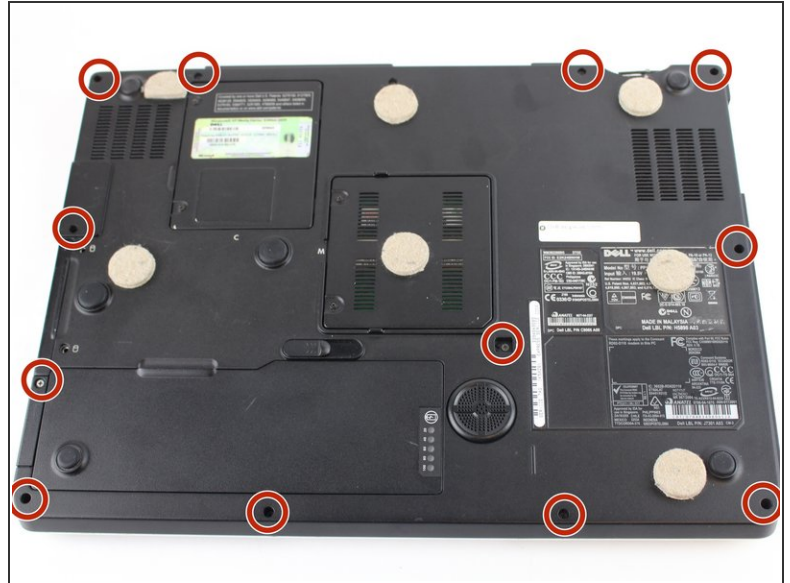
INTRODUCTION

This guide demonstrates how to remove and replace the speaker system of a Dell Inspiron 9300 in order to preserve the function of the device.

TOOLS:

- [Heavy-Duty Spudger](#) (1)
 - [iFixit Opening Tools](#) (1)
 - [Phillips #0 Screwdriver](#) (1)
-

Step 1 — Prerequisite Only



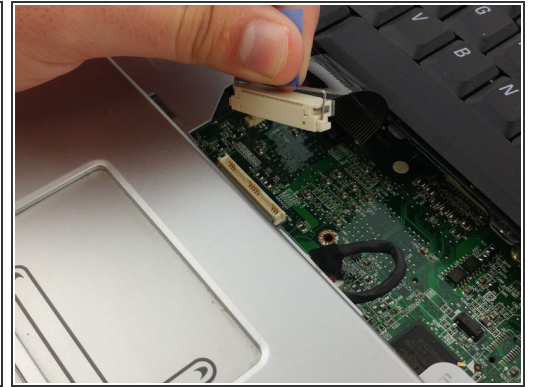
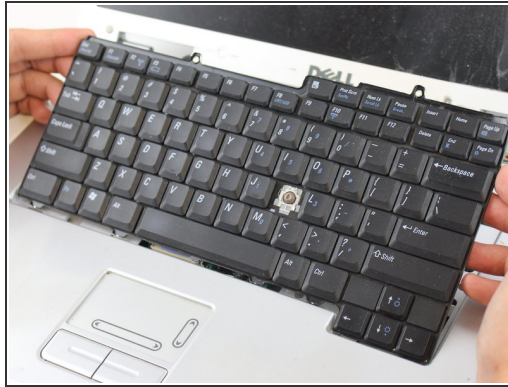
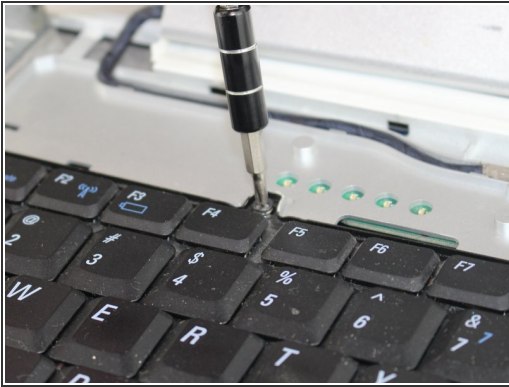
- Remove the battery prior to working on any internal components.
 - Remove the twelve 6mm Phillips screws from the bottom of the case.
- ⚠ Remove the battery before working on internal components to ensure a safe working environment.

Step 2



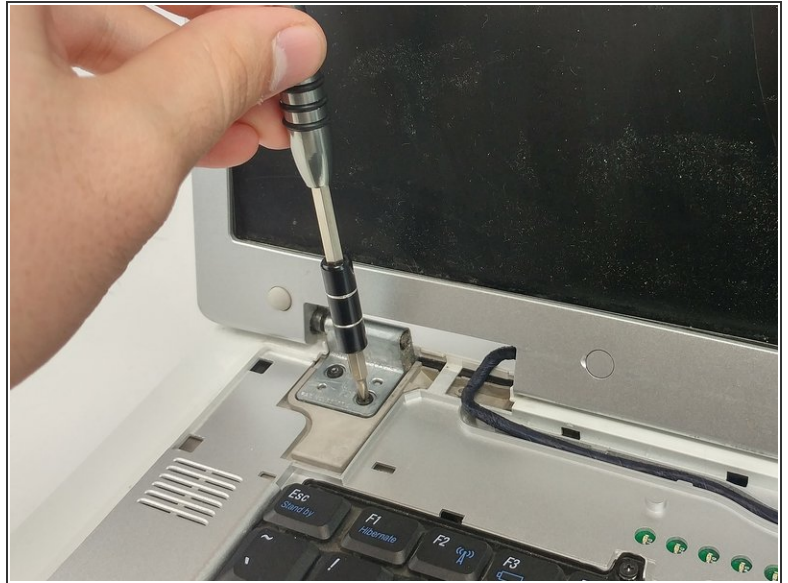
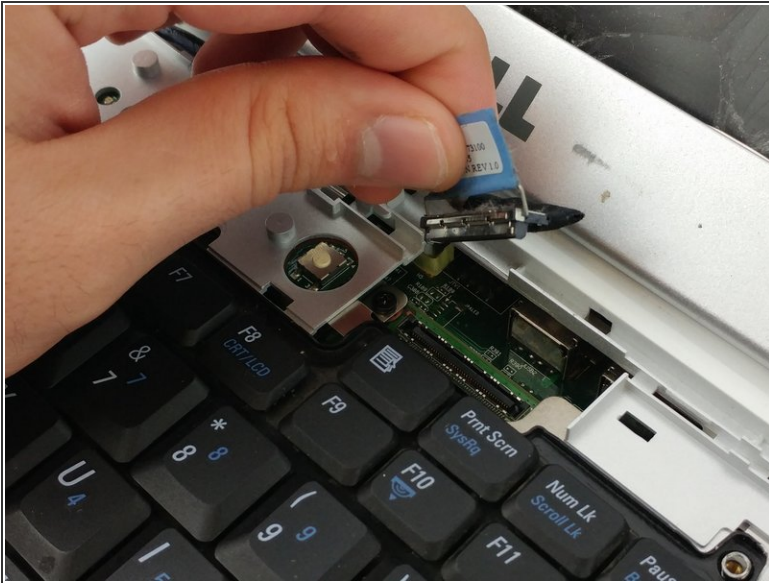
- Gently pry away the silver bezel above the keyboard and below the display using a spudger.
- ⓘ Start on the right hand side, where there is a notch in the bezel for easiest removal.

Step 3



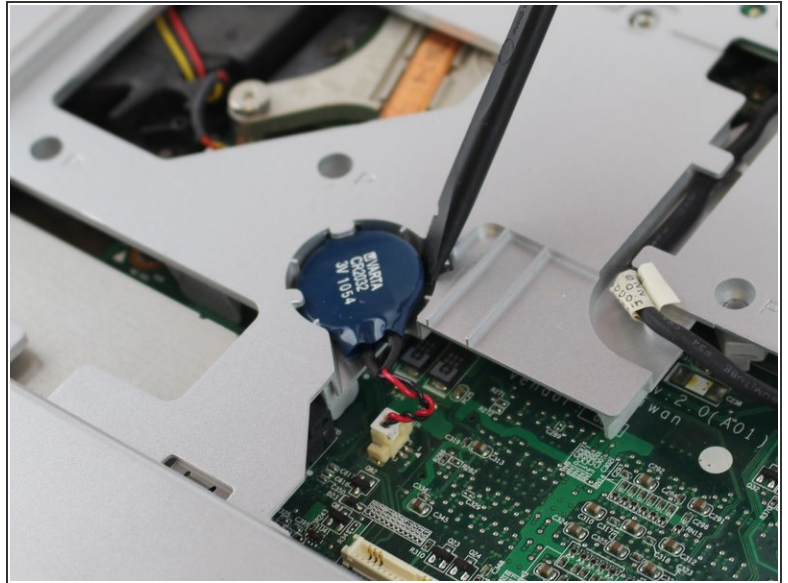
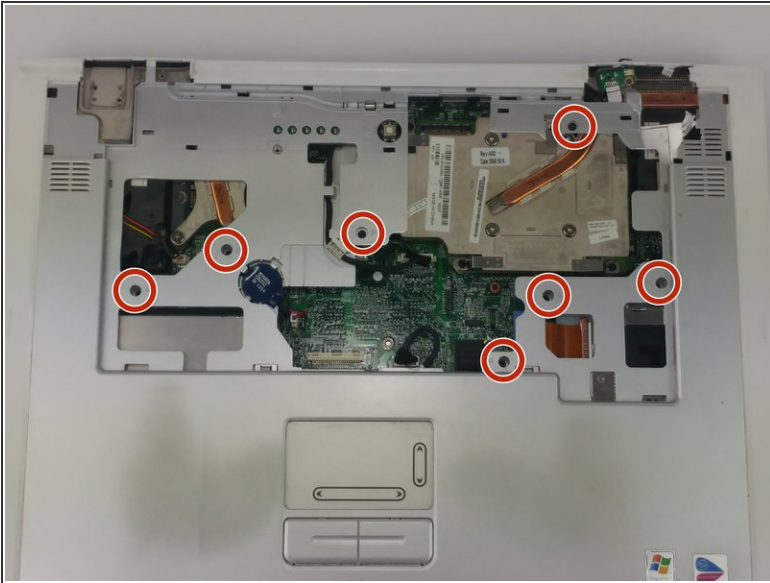
- Remove the two 5mm Phillips screws retaining the keyboard.
- Pull the keyboard up and toward the monitor to reveal the ribbon cable beneath.
- Firmly grasp the blue tape attached to the keyboard ribbon cable connector and pull upward away from the motherboard.

Step 4



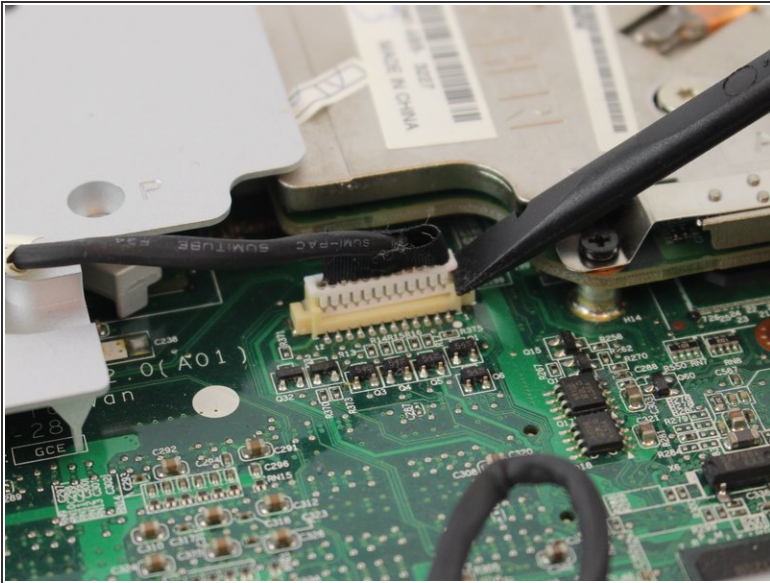
- Firmly grasp the blue tape attached to the LCD display ribbon cable connector and pull upward away from the motherboard.
 - Remove the two 5mm Phillips screws holding the display hinge on both sides of the laptop.
- ⚠ Support the display as you loosen the hinges, to avoid the screen falling and breaking.

Step 5



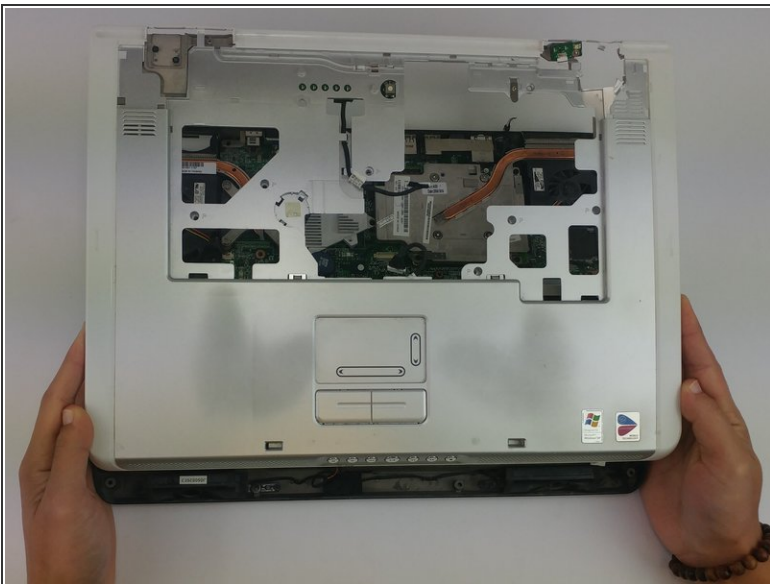
- Remove the seven 6mm Phillips screws holding the trackpad/palm rest to the motherboard.
- Gently pry the CMOS battery out of its retaining clip using a spudger.

Step 6



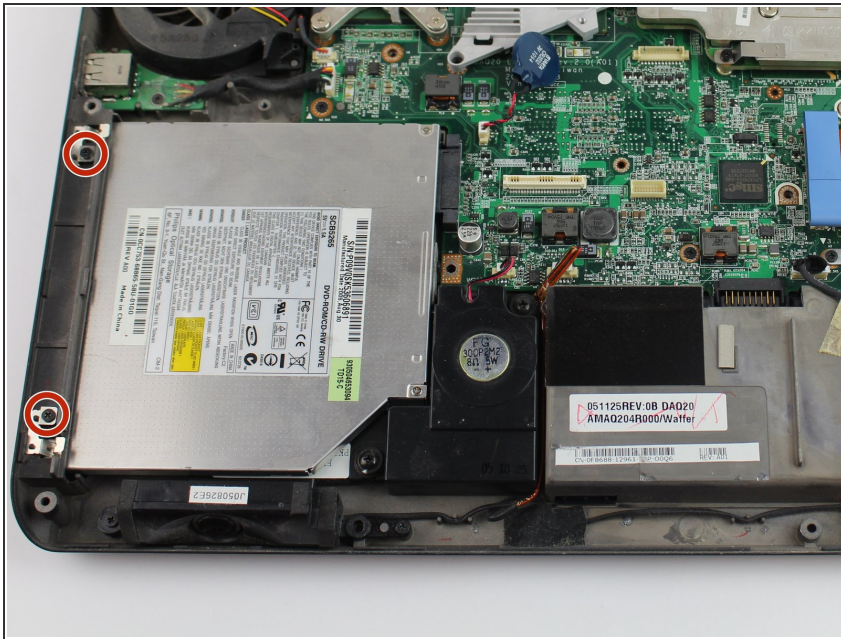
- Remove the low profile connector for the keyboard status lights located next to the video card heat sink using a spudger.
- Remove the trackpad ribbon cable from the motherboard using a spudger.

Step 7



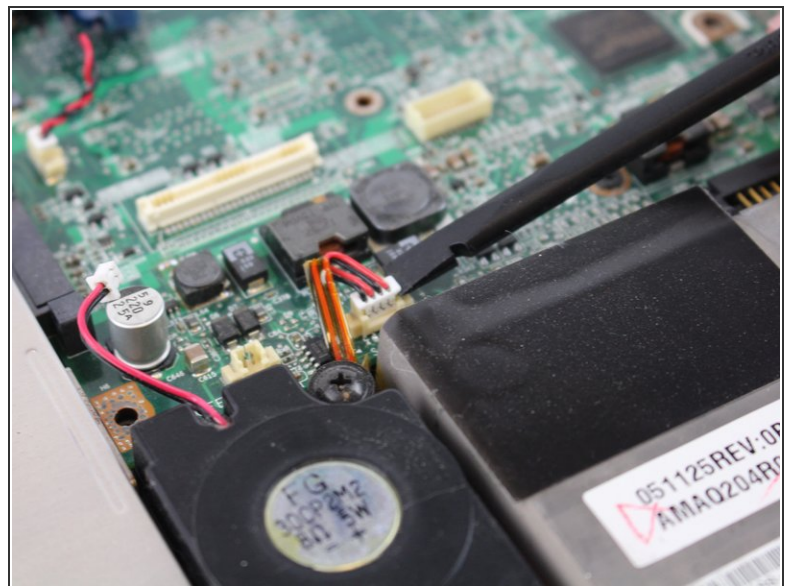
- Pull up and away on the track pad to expose the internal components below.

Step 8 — Speaker System



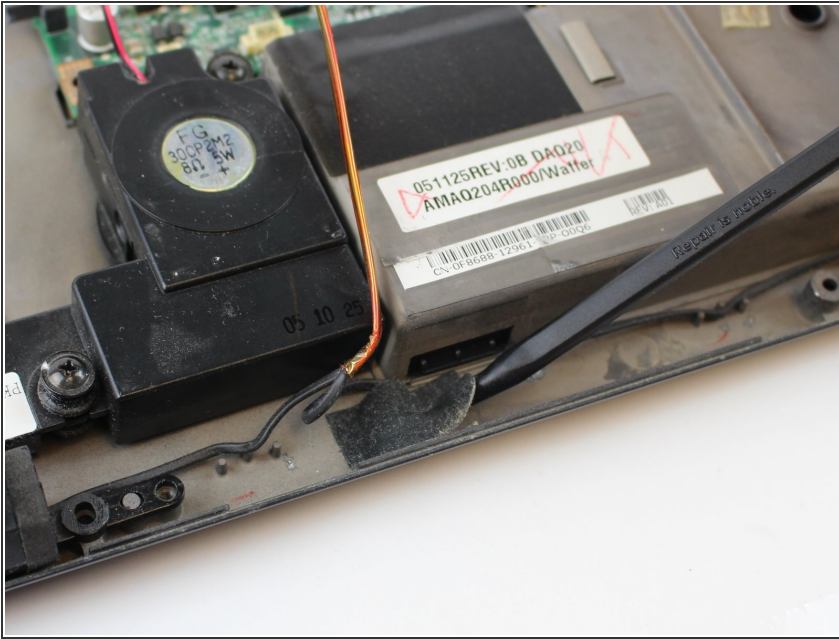
- Remove the two 3mm Phillips screws holding the CD-ROM drive in place.
- Slide the CD-ROM drive out of the lower case.

Step 9



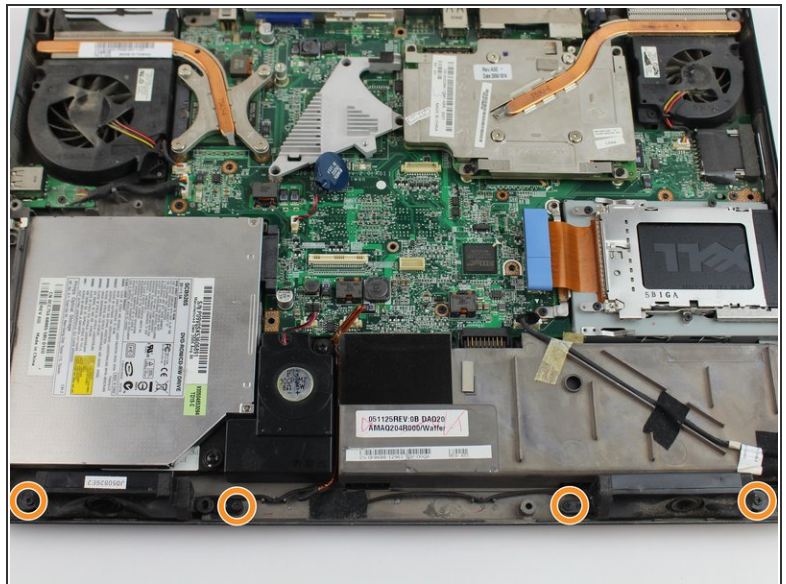
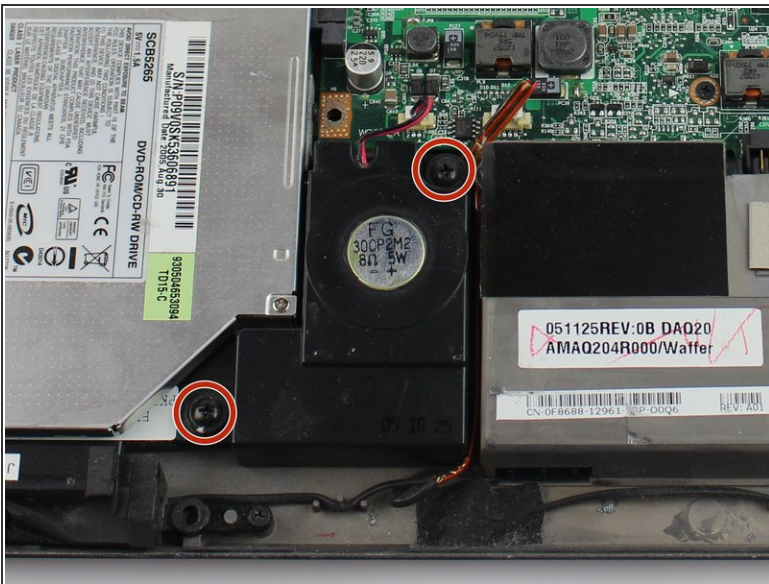
- Use a spudger to disconnect the subwoofer cable.
- Repeat for the adjacent speaker connector.

Step 10



- Pry away the black tape that holds the sound system wires in place.

Step 11



- Remove the 7mm Phillips screws that hold the subwoofer in place.
- Remove the four (two for each speaker) 5mm Phillips screws that secure the left and right speakers.

To reassemble your device, follow these instructions in reverse order.