



# Dell Inspiron 9300 WIFI Card Replacement

the WIFI Card enables the computer to network with other computers wirelessly using a radio frequency.

Written By: Randy McMillan



---

## INTRODUCTION

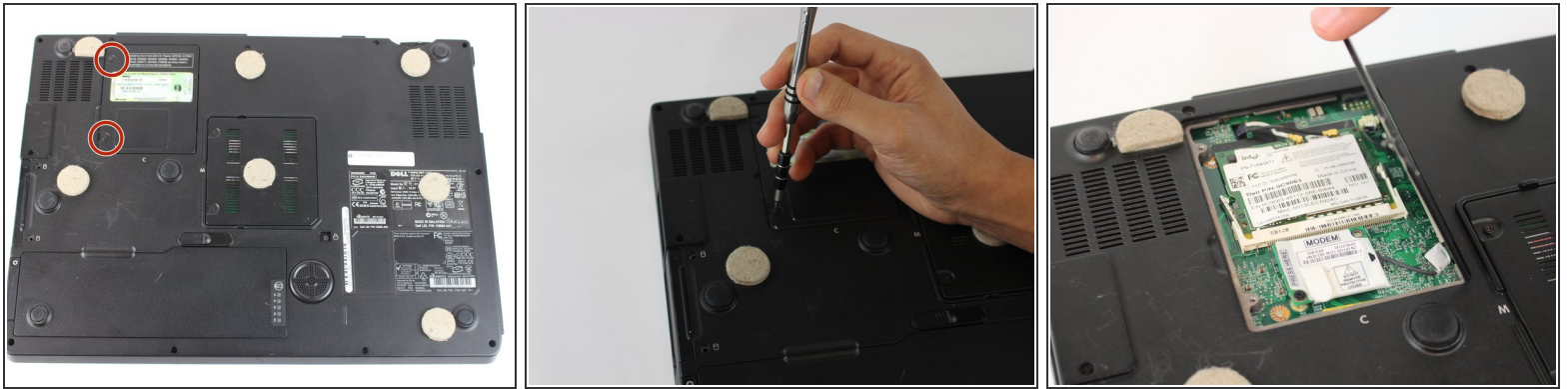
This content will describe the procedure for replacing the WIFI Card.



### TOOLS:

- [Phillips #0 Screwdriver](#) (1)
  - [iFixit Opening Tools](#) (1)
-

## Step 1 — Modem & WIFI Card Prerequisite



- Flip the computer over and place it on a clean level surface.
  - Loosen the screws using a size #0 Phillips screwdriver.
  - ⓘ The screws do not come completely out.
- ⚠ It is strongly recommended that the [Anti-Static Wrist Strap](#) is used to avoid damage to internal components.

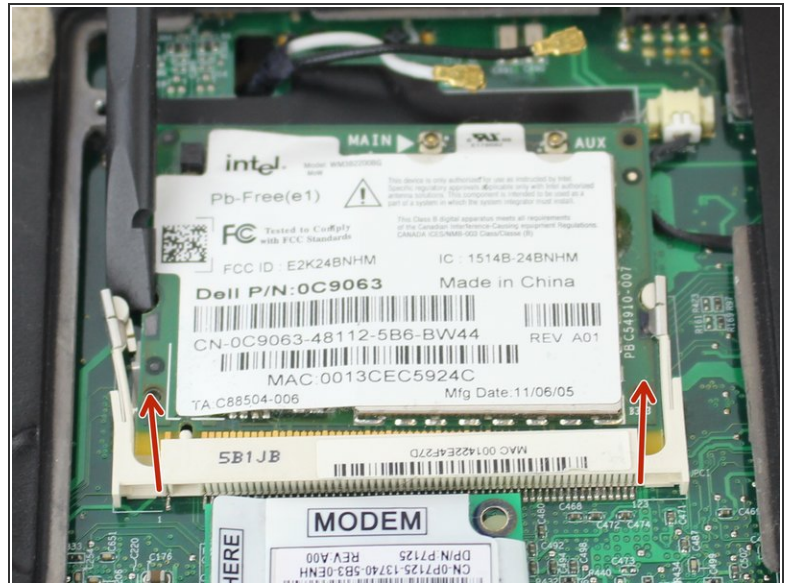
## Step 2



- Once the screws are loose, open the panel using a plastic opening tool to access the components below.
- ⓘ The modem card should be labeled MODEM. The WIFI card is larger than the modem and closer to the outer edge of the computer.



## Step 3 — WIFI Card



- Gently pry up on the gold antennae connections using a spudger.
- Gently pry open both retaining clips on either side of the WiFi card using a spudger.
- ❗ Once the clips are open and the card is unplugged, it is safe to remove.

To reassemble your device, follow these instructions in reverse order.