



Written By: Patrick McNeil



---

## INTRODUCTION

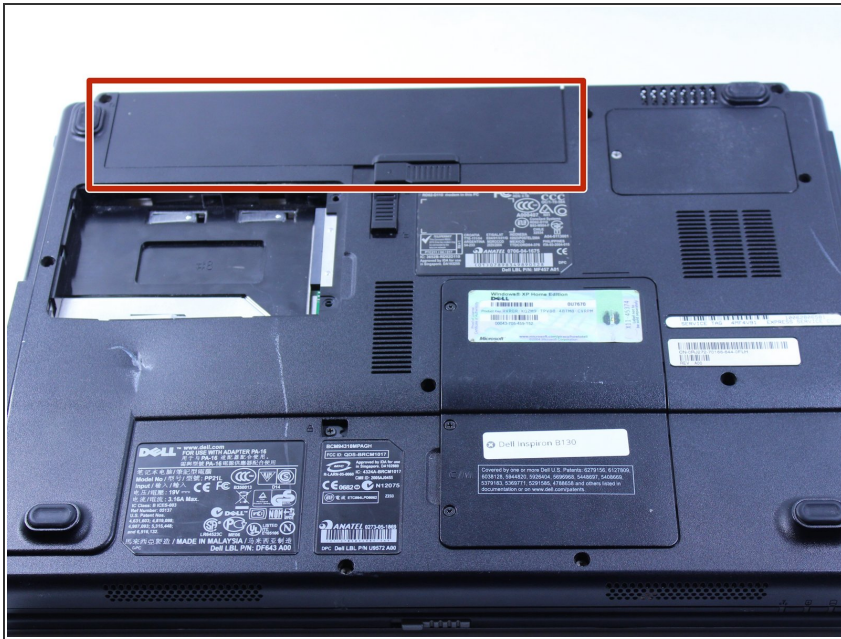
The CPU is very important and works directly with the motherboard. It basically tells your computer nearly everything it does, so if you have already figured out that the problem you are experiencing can't be the piece of hardware you thought it was then it is probably the CPU. A slow computer, random reboots, and "blue screens of death" are the common problems that arise from a bad or broken CPU.



### TOOLS:

- [Phillips #0 Screwdriver](#) (1)
-

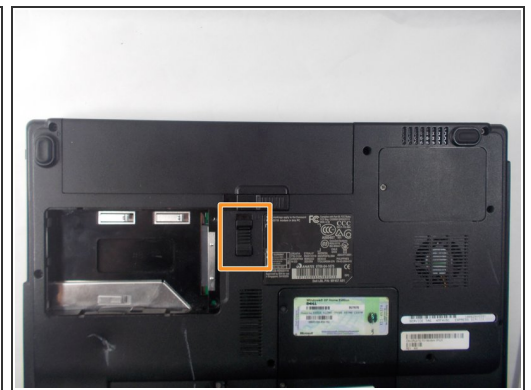
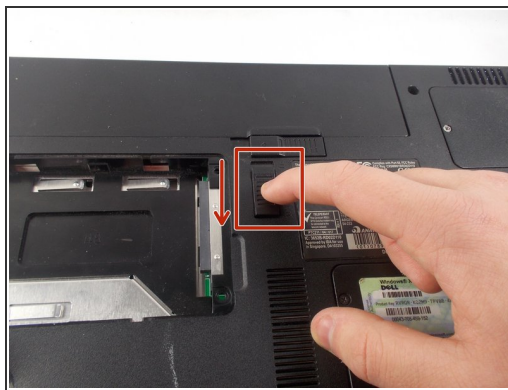
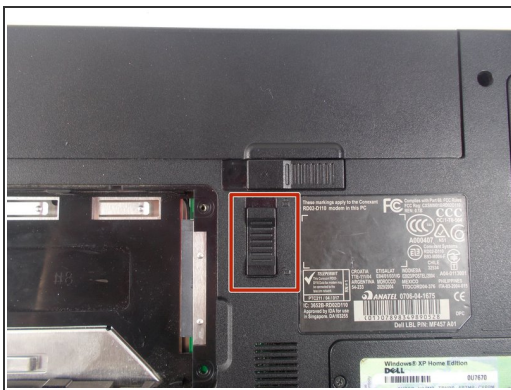
## Step 1 — Battery



⚠ First, make sure your computer is turned off.

- Flip your computer over and you can see the battery.

## Step 2



- Push the tab from the battery, downwards to unlock the battery.
- The tab should be in the position next to the unlocked indicator.

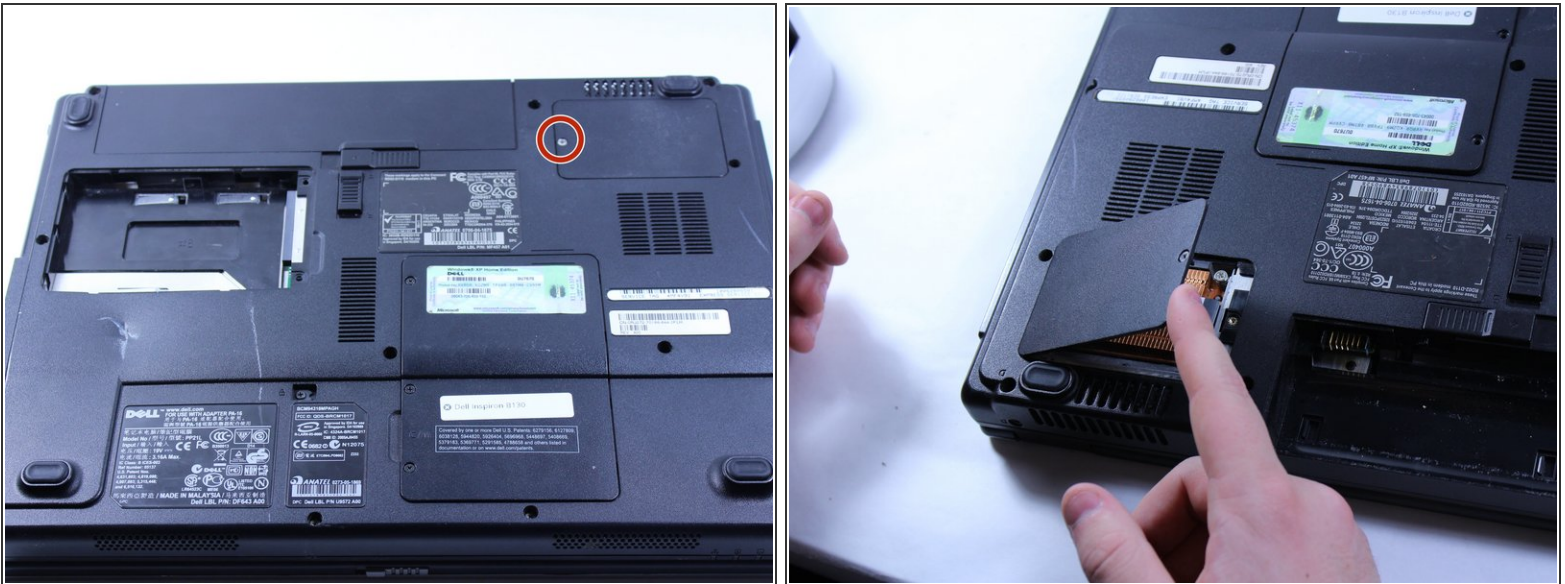


## Step 3



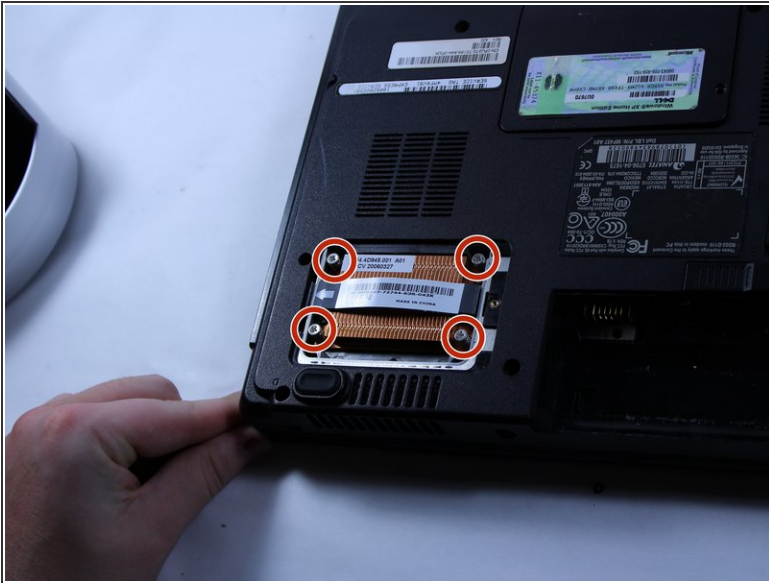
- Now, push the other tab (the one right under the battery) from right to left.
- Now the battery will be loose; lift the battery up and out of the computer.

## Step 4 — CPU



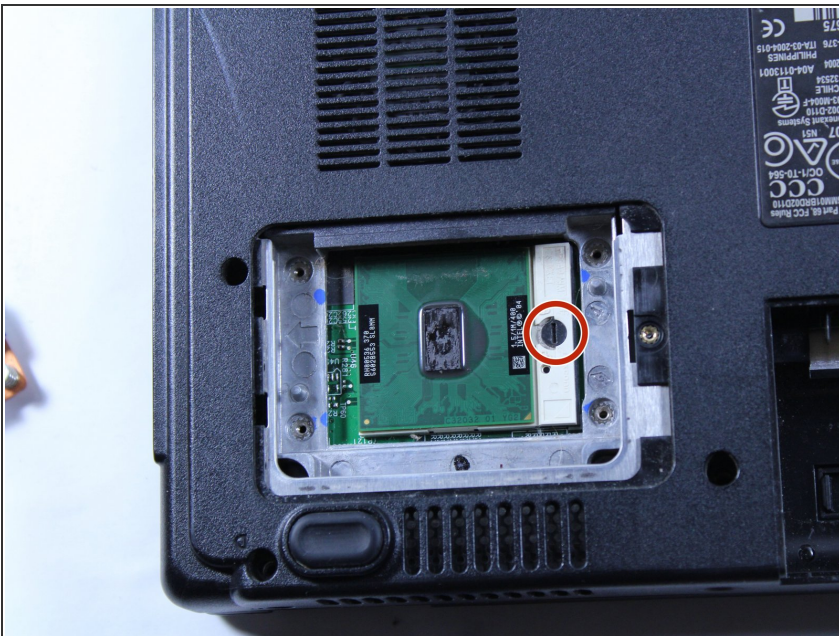
- Remove the 6 mm screw.
- Lift the plastic cover off.

## Step 5



- Loosen the 4 screws.
- i** These screws stay connected to the heat sink.
- Remove the heat sink from the computer.

## Step 6



- Use a flat head screwdriver to turn the screw one quarter turn into the unlock position.
- Remove the CPU.

To reassemble your device, follow these instructions in reverse order.