



Dell Inspiron B130 Disk Drive Replacement

This guide will show and tell you how to replace the Disk Drive for your Dell Inspiron B130.

Written By: Patrick McNeil



INTRODUCTION

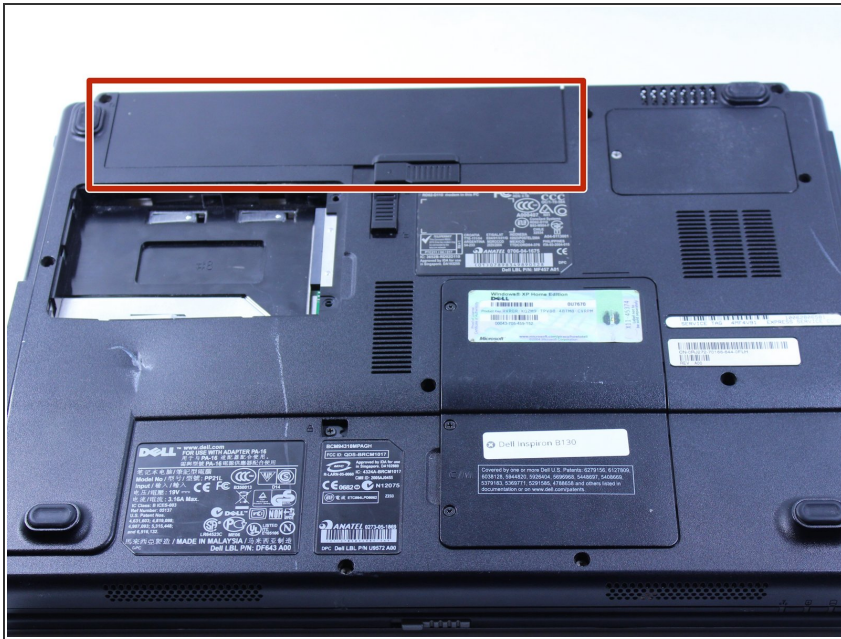
The disk drive lets you install drivers from disks and many other useful things. This is a simple replacement and should only be done if there is no way the disk drive could ever operate correctly.



TOOLS:

- [Phillips #0 Screwdriver](#) (1)
-

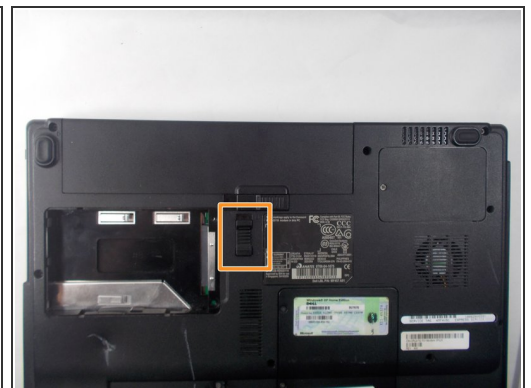
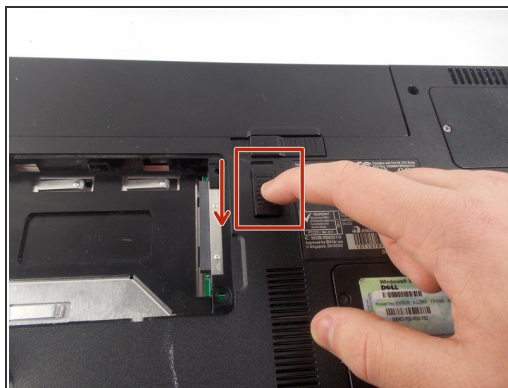
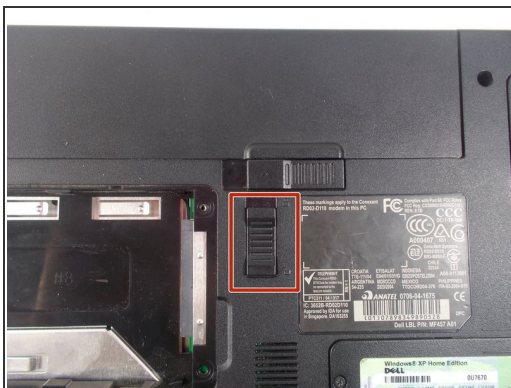
Step 1 — Battery



⚠ First, make sure your computer is turned off.

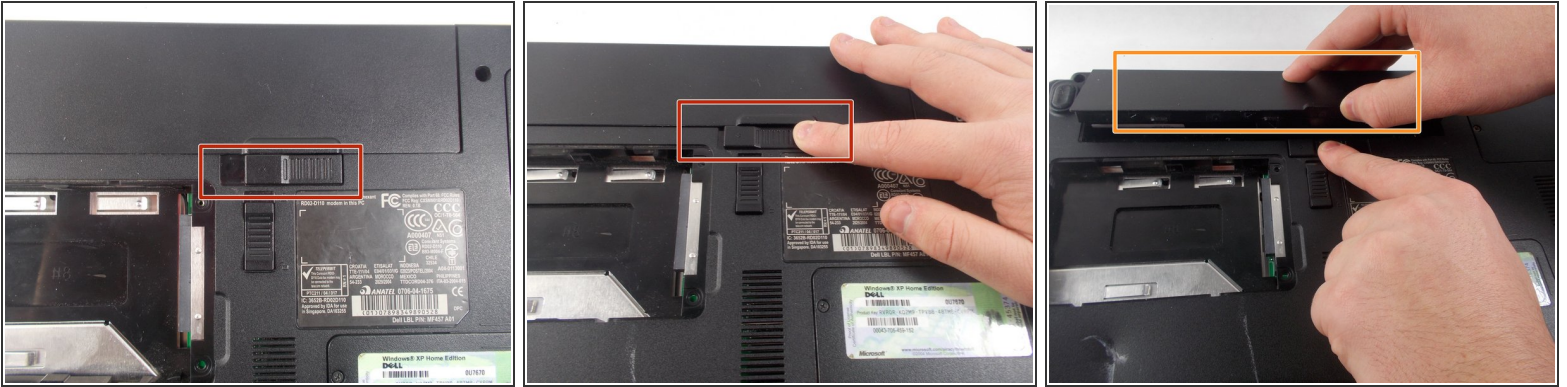
- Flip your computer over and you can see the battery.

Step 2



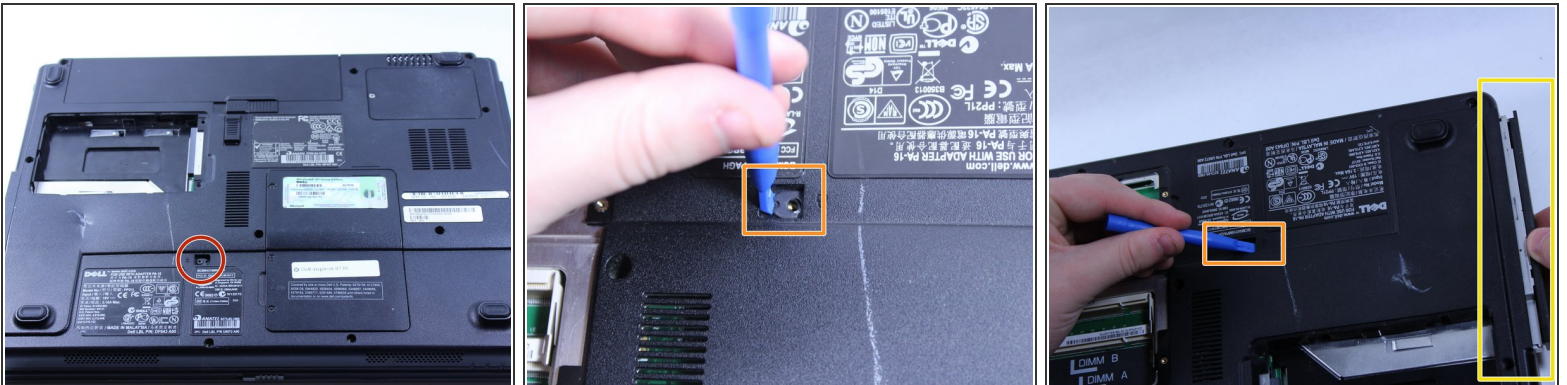
- Push the tab from the battery, downwards to unlock the battery.
- The tab should be in the position next to the unlocked indicator.

Step 3



- Now, push the other tab (the one right under the battery) from right to left.
- Now the battery will be loose; lift the battery up and out of the computer.

Step 4 — Disk Drive



- Remove the 8mm screw
- Use the plastic opening tool to push out the disk drive.
- Pull the disk drive out with the opposite hand.

Step 5



- You can now remove the disk drive.

To reassemble your device, follow these instructions in reverse order.