



Dell Inspiron E1405 LCD Screen Replacement

This guide will help you replace the LCD screen in a Dell Inspiron 1305 laptop.

Written By: Sarah Neal Secrest



INTRODUCTION

This guide will help you replace the LCD screen in a Dell Inspiron 1305 laptop.



TOOLS:

- [Phillips #00 Screwdriver](#) (1)
-

Step 1 — Battery



⚠ Save your work, power the laptop off, and ensure that the charging cable is unplugged before removing the battery.

- Flip the laptop over.
- Locate the battery release switch on the bottom of the laptop.

Step 2



- Slide the battery release switch away from the lock symbol until you hear the battery click.
- Slide the battery towards the back of the laptop until it comes free.

Step 3 — LCD Screen



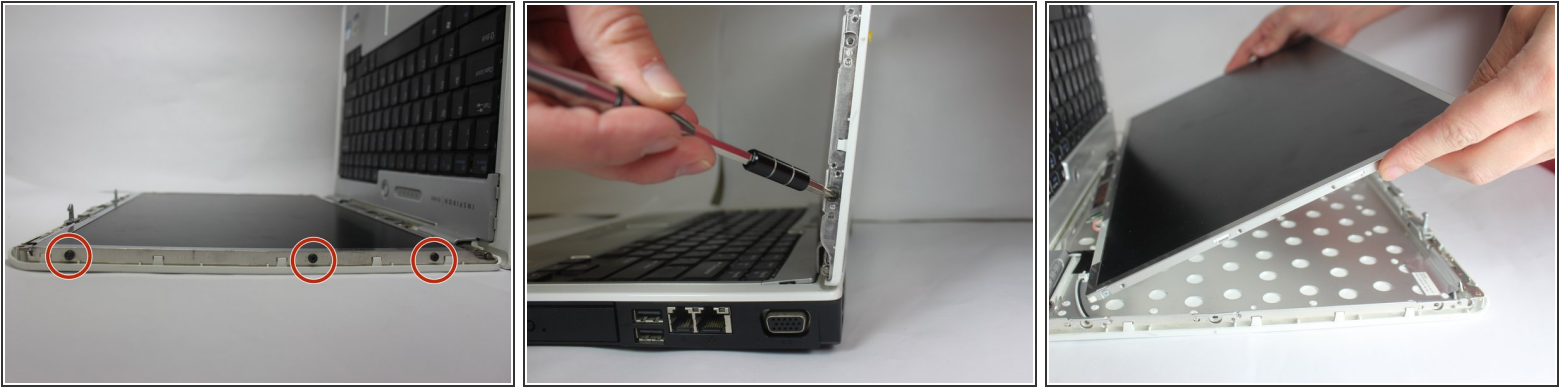
- Use your fingers or a spudger to remove the six small rubber covers off the display assembly.
- Remove the six 5.7 mm screws with a Phillips #00 screwdriver.

Step 4



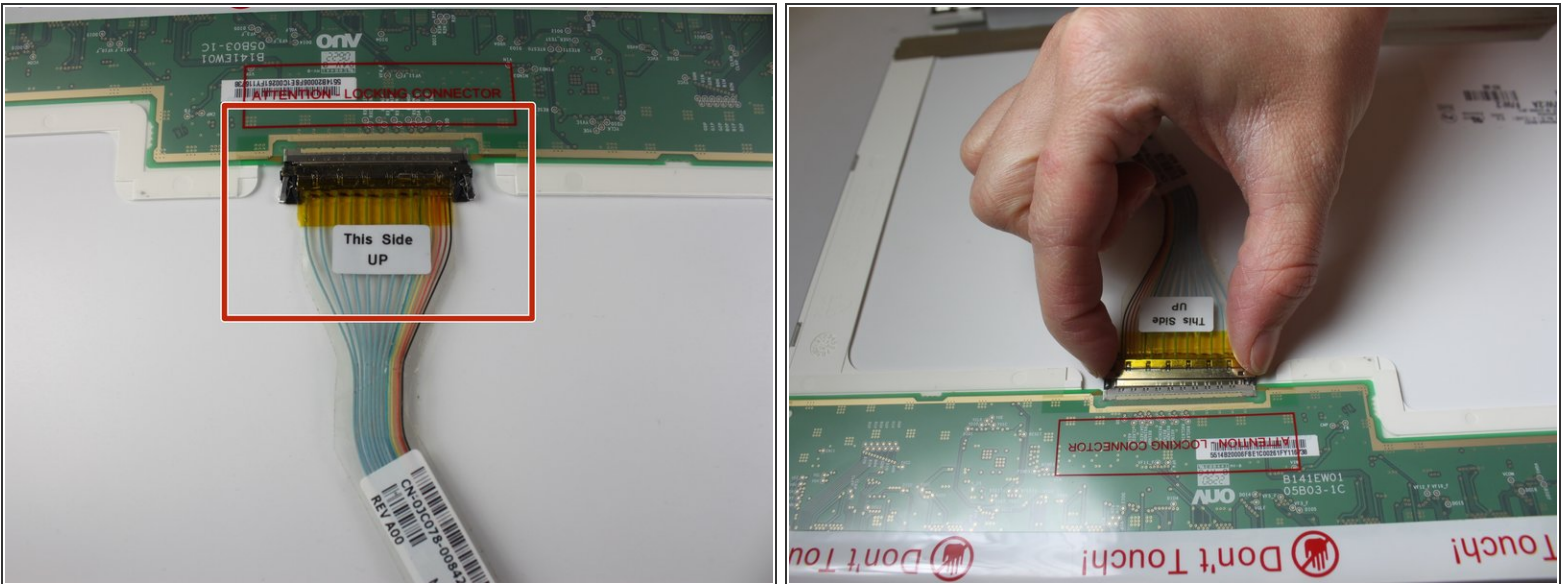
- Use your fingers to gently pry the front bezel off the display assembly. Start at a corner and work your way around.
- Remove the front display bezel when it comes free.

Step 5



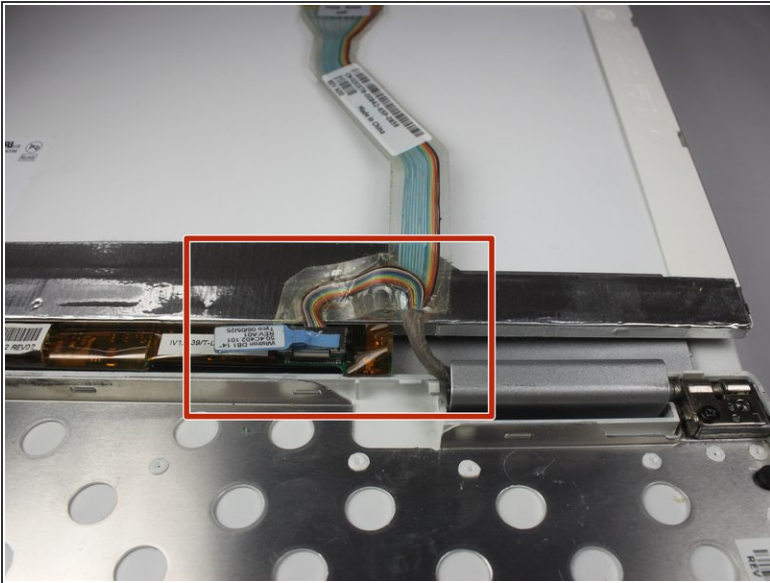
- Remove the three 3.6 mm screws using a Phillips #00 screwdriver on both sides of the display.
- Remove the LCD screen from the display assembly.

Step 6



- Unplug the VGA cable by pushing the two metal sides towards the middle of the strip.
- Gently pull the VGA cable away to release the strip.

Step 7



- Remove the next connection by pressing the two metal sides towards the middle. Then gently pull up the ribbon.

To reassemble your device, follow these instructions in reverse order.