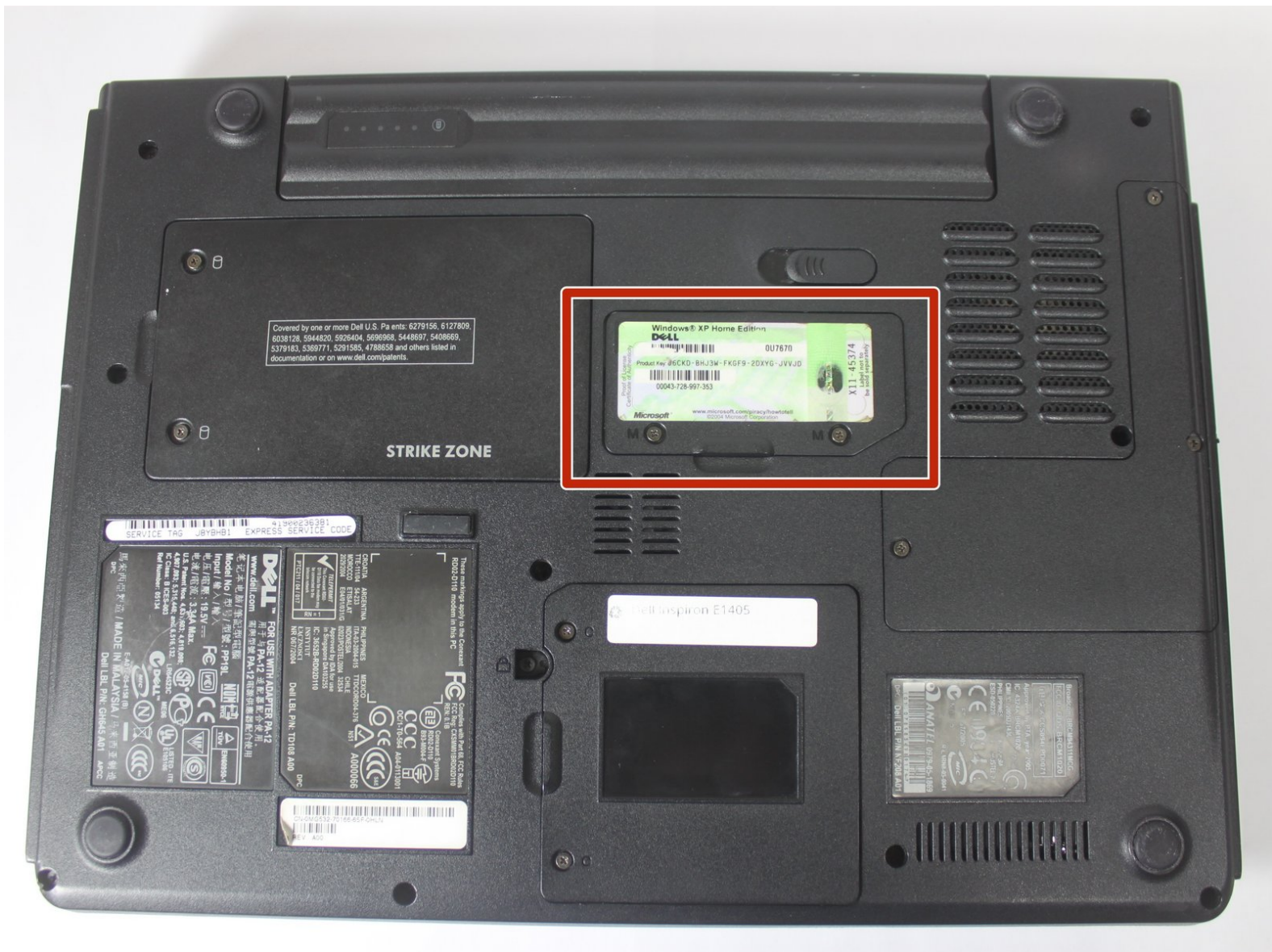




Dell Inspiron E1405 RAM Replacement

This guide will help you replace the RAM in a Dell Inspiron 1305.

Written By: Sarah Neal Secrest



INTRODUCTION

Use this guide to help you replace the RAM in a Dell Inspiron 1305.



TOOLS:

- [Phillips #00 Screwdriver](#) (1)
-

Step 1 — Battery



⚠ Save your work, power the laptop off, and ensure that the charging cable is unplugged before removing the battery.

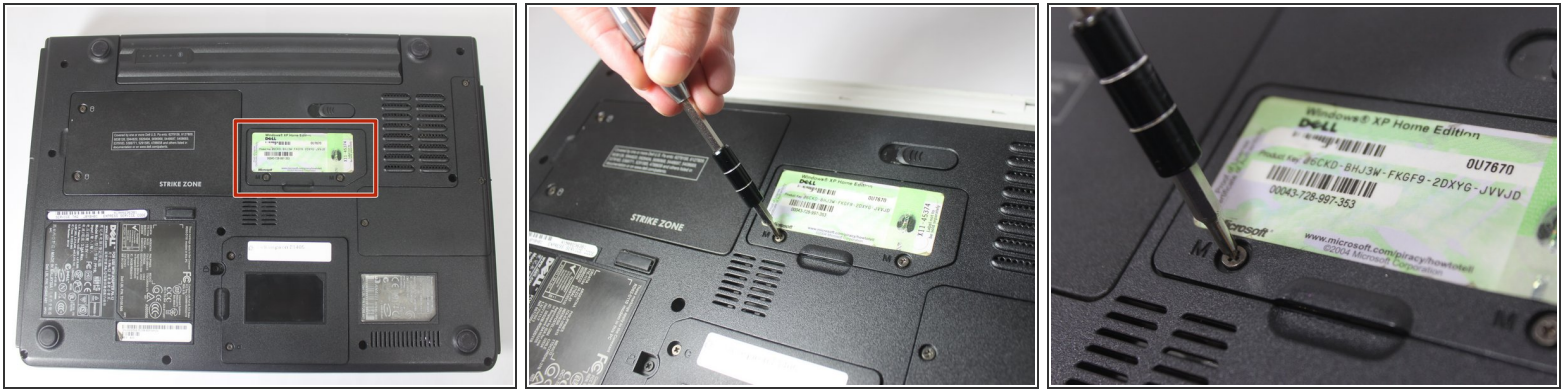
- Flip the laptop over.
- Locate the battery release switch on the bottom of the laptop.

Step 2



- Slide the battery release switch away from the lock symbol until you hear the battery click.
- Slide the battery towards the back of the laptop until it comes free.

Step 3 — RAM



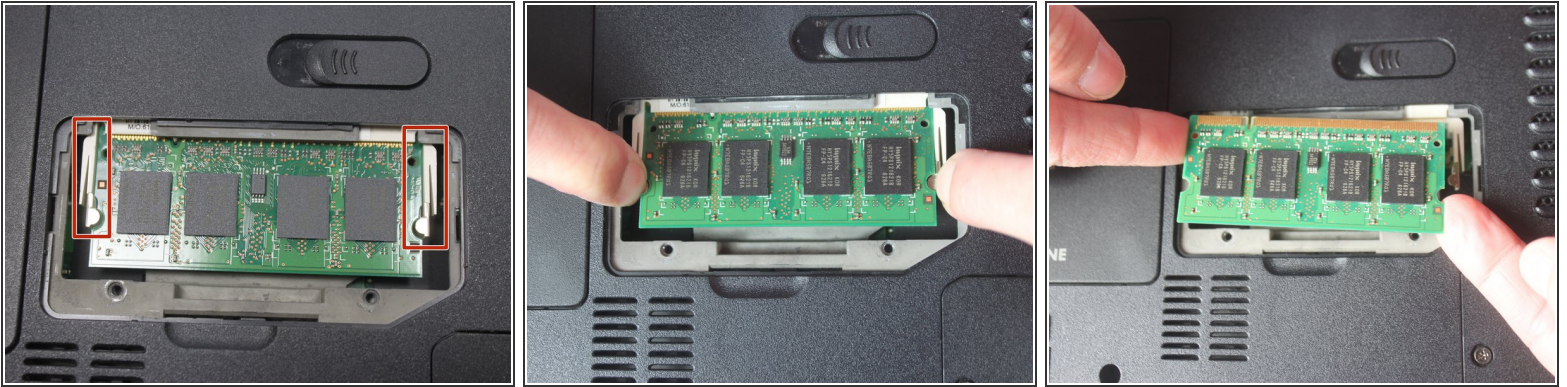
- Locate the RAM access door.
- Remove the two 5.5mm screws securing the RAM access door with a #00 Phillips screwdriver.

Step 4



- Using your fingers, open and remove the access door from the laptop, exposing the RAM underneath.

Step 5



- To access the RAM, push out the latches outward on the left and right of the RAM.
- To remove the memory card, pull it out of the tray with the latches still stretched out.

To reassemble your device, follow these instructions in reverse order.