



# Dell Inspiron E1505 Modem Replacement

If the modem in your laptop has failed, this guide will show you how to replace it.

Written By: Onelis Ivette Sanchez





## TOOLS:

- [Phillips #0 Screwdriver](#) (1)
  - [iFixit Opening Tools](#) (1)
-

## Step 1 — Battery



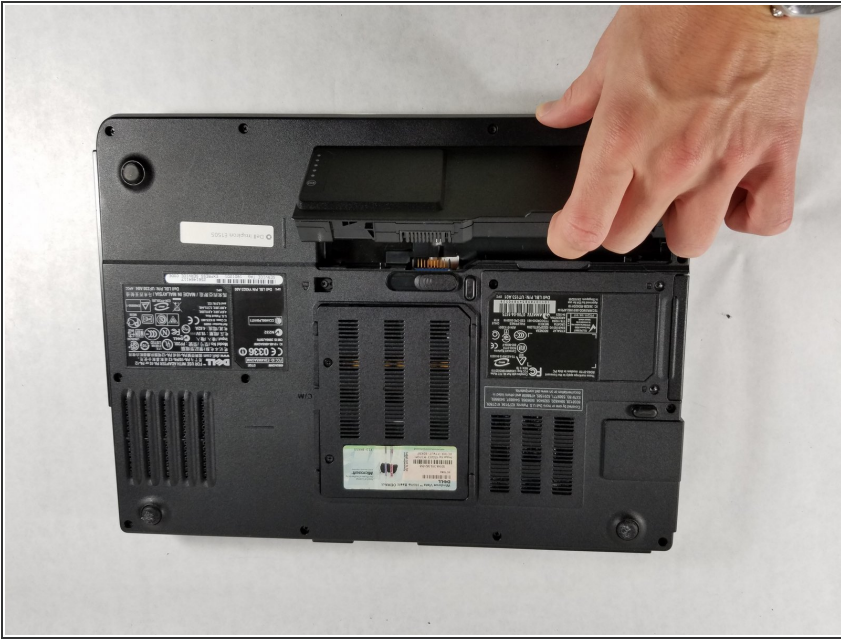
- Before any work can be done ensure that the laptop is powered off.
- Use either the power button on the computer or issue a shutdown from the operating system.
- Once the device is off place the laptop on a flat surface and flip it so that the bottom is facing upwards.

## Step 2



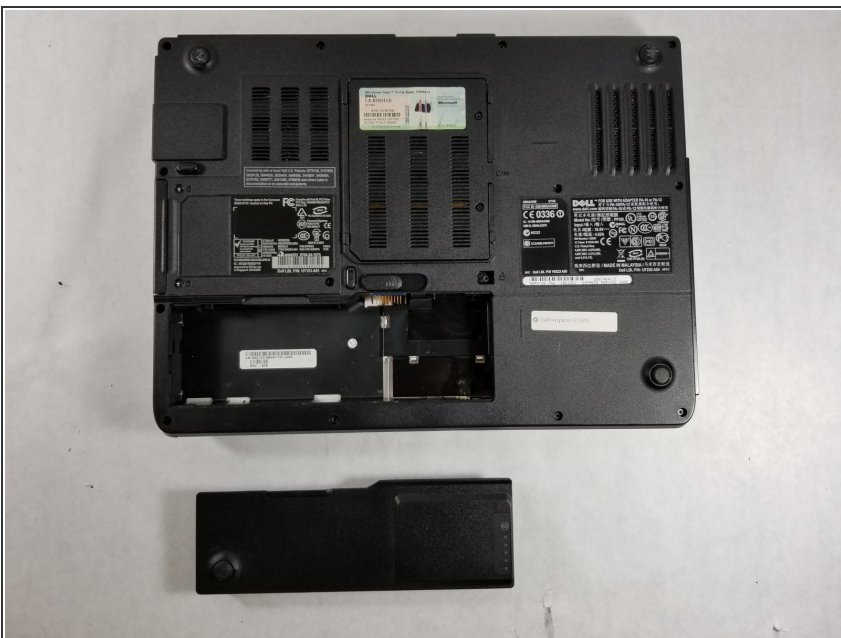
- Locate the battery release switch on the bottom of the laptop.
- Once located slide the switch into the unlock position.

### Step 3



- Locate the “lip” on the laptop to lift the battery outside of the compartment.
- Once the battery is out, you will be able to find the replacement part number in order to purchase a new battery.

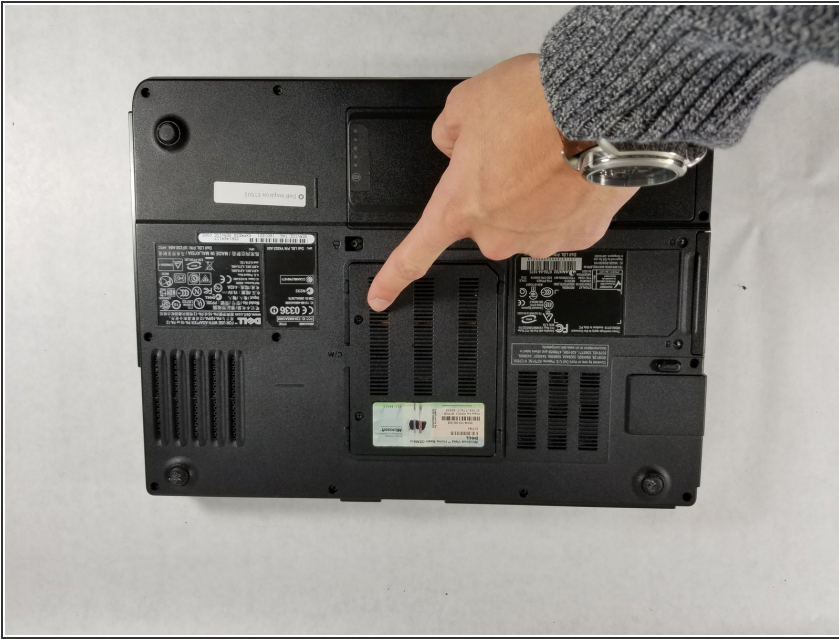
### Step 4



- Once the new battery has been acquired take the battery and place it in the empty battery slot.
- Slide the switch into the lock position to secure the new battery.



## Step 5 — Back Door removal



- On the back of the laptop there is a compartment for the modem for easy access.
- It is located right above the switch for the battery and has two Phillips head screws as well as a sticker for the laptop's product key.
- Unscrew the two screws with a screwdriver and lift the backplate up to unveil the Modem.

## Step 6



- There are two metal tabs on each of the sticks of the modem.
- Press each of the tabs outward and the modem stick should slide up.
- Gently pull the stick of phone modem out and get the product number to get replacement modem.
- Do this for both of the sticks of phone modem.

## Step 7 — Inserting a new modem



- **Installing a new modem:** Line up the new modem by making sure the slot where the modem is installed lines up with the position of the connector on the new modem.
- Push the modem down. Make sure to do this evenly so the modem makes a good connection.
- Repeat this procedure until the modem is secure.

To reassemble your device, follow these instructions in reverse order.