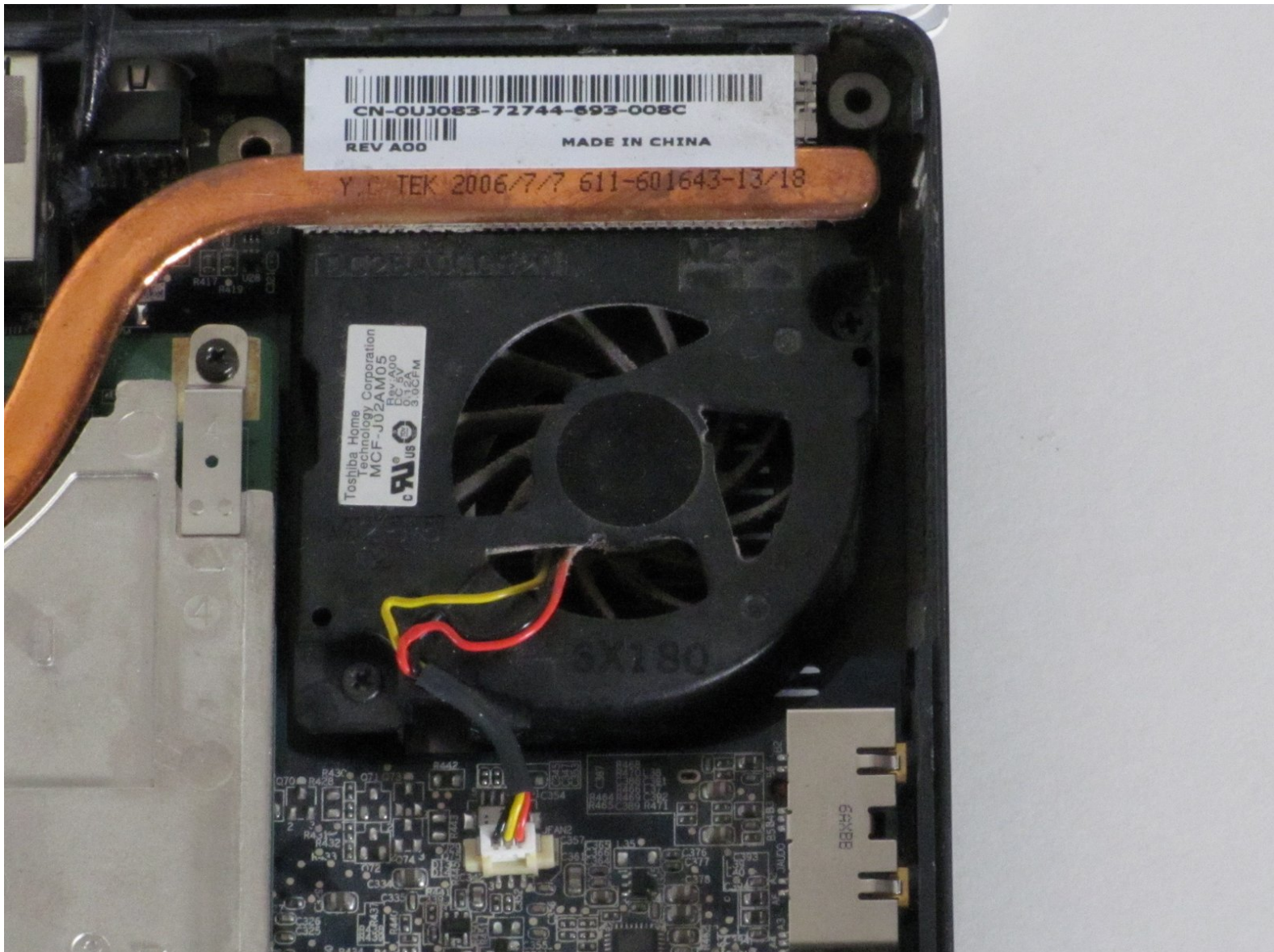




Dell Inspiron E1705 Cooling System Replacement

This repair guide contains step by step instructions for removing and the cooling system (fans) for a Dell Inspiron E1705 notebook.

Written By: Evan Fairchild



This document was generated on 2019-10-10 05:57:59 AM (MST).

INTRODUCTION

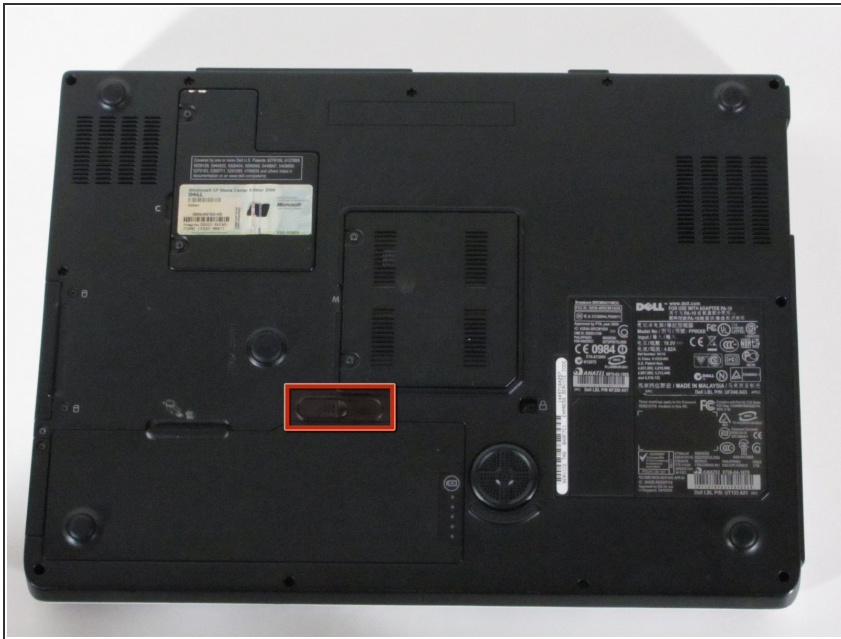
This requires some disassembly before you can access the cooling system. Once you have completed that, removing and replacing the fans is very quick and easy.



TOOLS:

- [Phillips #1 Screwdriver](#) (1)
 - [iFixit Opening Tools](#) (1)
-

Step 1 — Battery



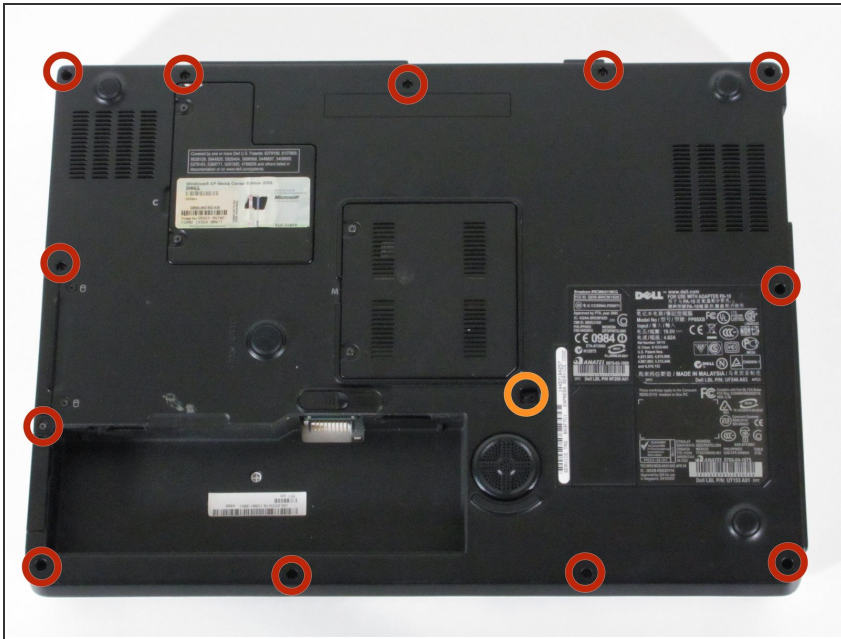
- ⚠ Make sure that the computer is turned off and is disconnected from external power source.
- Turn it upside down and locate the battery release switch.

Step 2



- While holding the switch in the open position, lift out the battery.
- ⓘ If you plan to work on any internal laptop components, press and hold the power button for 5 seconds. This will dissipate any residual charge on the motherboard to prevent electrical shock when you begin to handle it.

Step 3 — Lower Case



- Remove the 12 Phillips #1 screws from the edges of the lower case.
- You may also need to remove the central screw next to the lock icon.

Step 4



- Turn the computer back over and tilt the screen open.
- Use the plastic opening tool to carefully pry the panel out as shown in the pictures

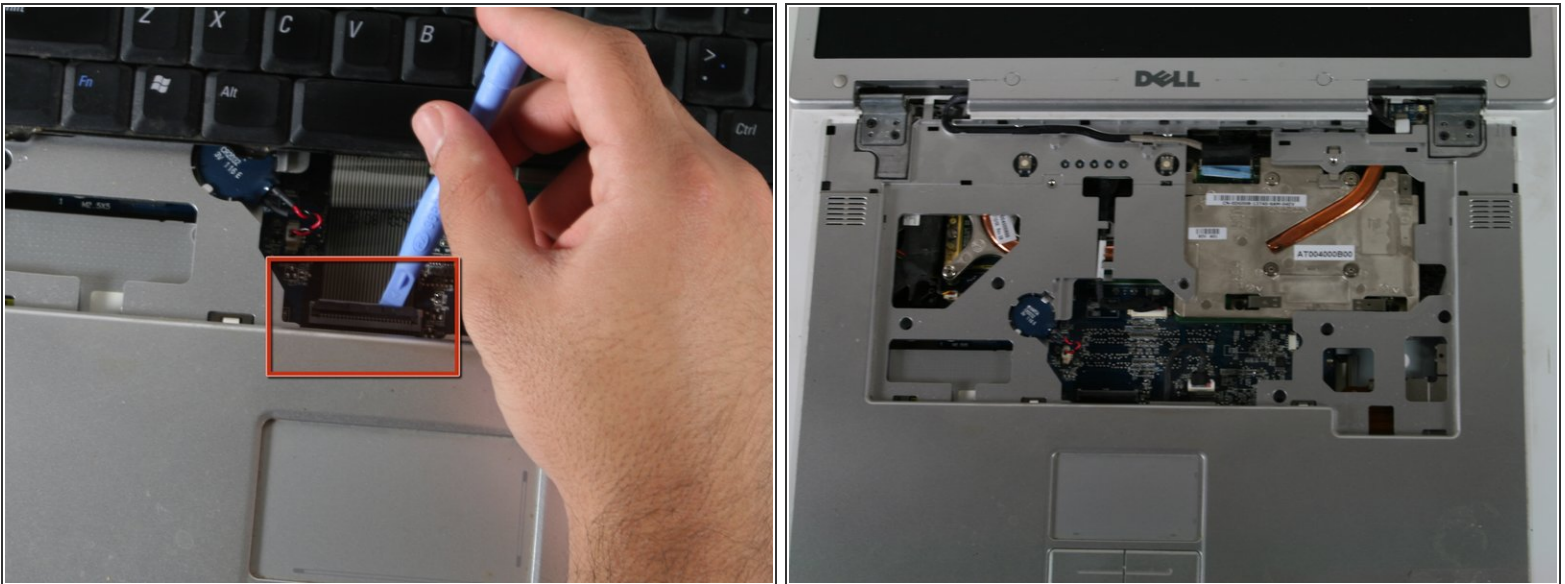
⚠ Remove the plastic panel carefully.

Step 5



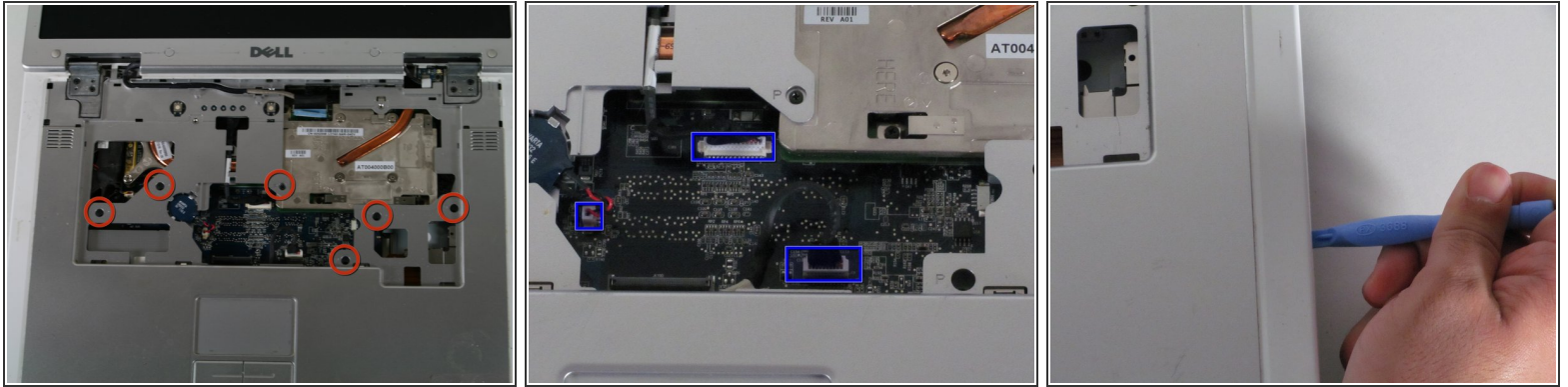
- Use the small Phillips head screwdriver to remove the screws circled in red.
- Gently lift the keyboard up and rest it just below the screen as shown in the picture.
- The keyboard will still be connected to the motherboard.

Step 6



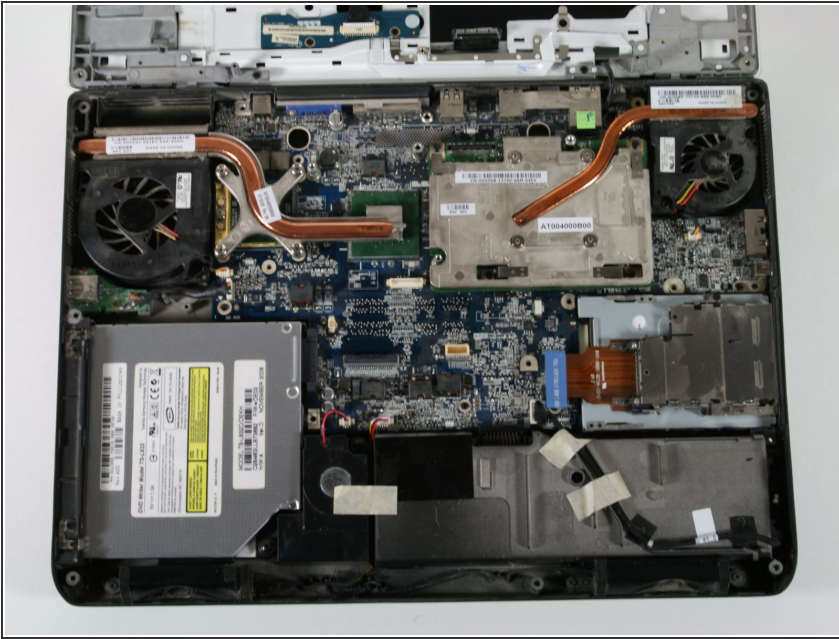
- Before removing the keyboard completely, use the plastic opening tool to gently lift the clamp connecting the keyboard to the motherboard.
- Once the keyboard has been disconnected, remove the keyboard completely.

Step 7



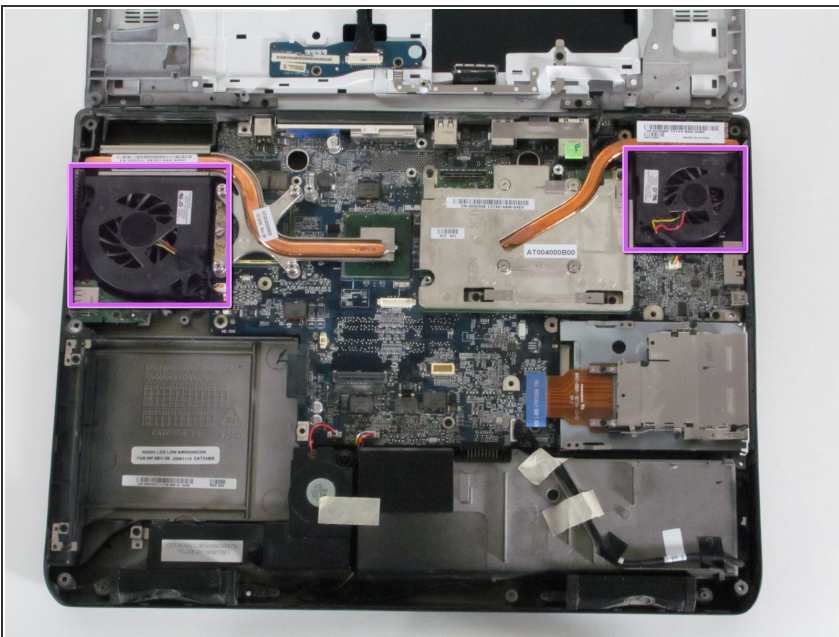
- Using a Phillips head screwdriver, remove the screws shown in the image. They all have the letter "P" next to them.
- Carefully unplug the connections shown.
- ⓘ Don't forget the display cable. It is slightly to the right of the Dell logo at the top.
- Also, the wireless cables on the right side may prevent moving the upper case out of the way.
- Once the screws have been removed and the connections unplugged, use the plastic opening tool to gently separate the panel from the lower case.

Step 8



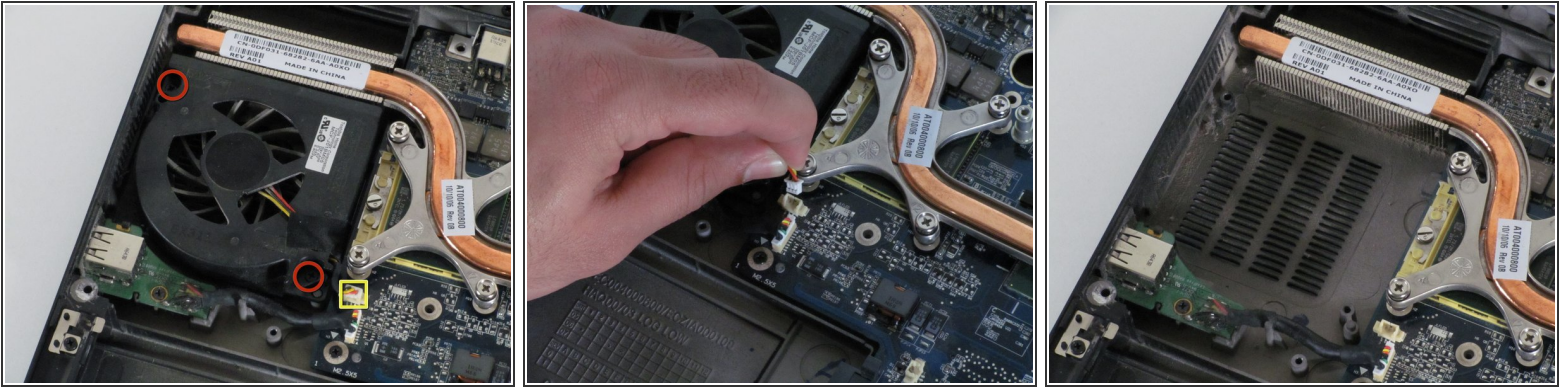
- Remove the plastic case by gently bending back towards the screen. You can bend the screen all the way back if that helps.
- ❗ For the motherboard the optical drive will be removed already. However for the lower case it is not necessary that it be taken out.
- ⚠ If you are having trouble removing the upper plastic case (and LCD) from the lower case, there may still be a wire connected to the Wi-Fi adapter. Turn the laptop over, open the Wi-Fi module access panel and remove the + and - leads for the Wi-Fi antenna.

Step 9 — Cooling System



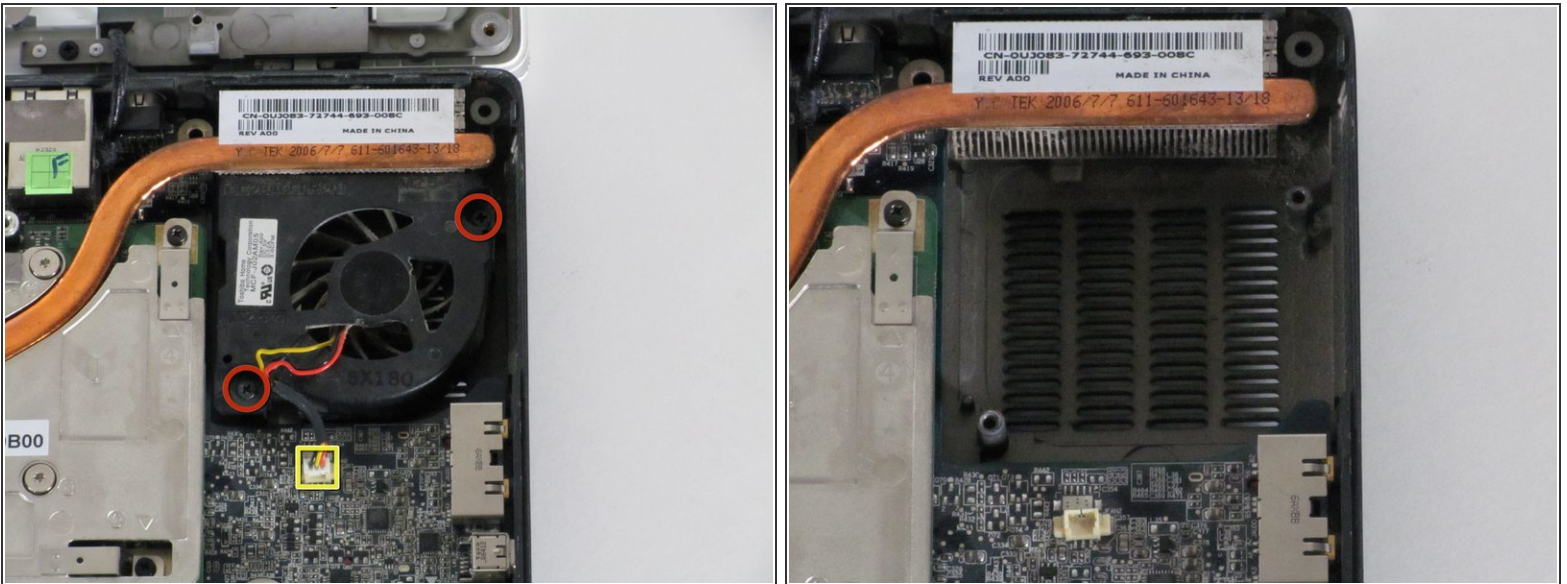
- Locate the two fans as shown
- We will begin by removing the left fan first
- ❗ You should be aware that the 2 fans are unique and have 2 different part numbers. CPU fan on left is part # DC28000010L. GPU fan on right is part # DC28A000920.

Step 10



- Remove the two screws indicated in the first picture.
- Remove the lead also shown
- The fan should lift out with ease. Do not force out.

Step 11



- Remove the two screws indicated.
- Remove the lead also indicated in the picture
- Once the lead and both screws are removed, the fan should lift out with ease. Do not force out.

To reassemble your device, follow these instructions in reverse order.