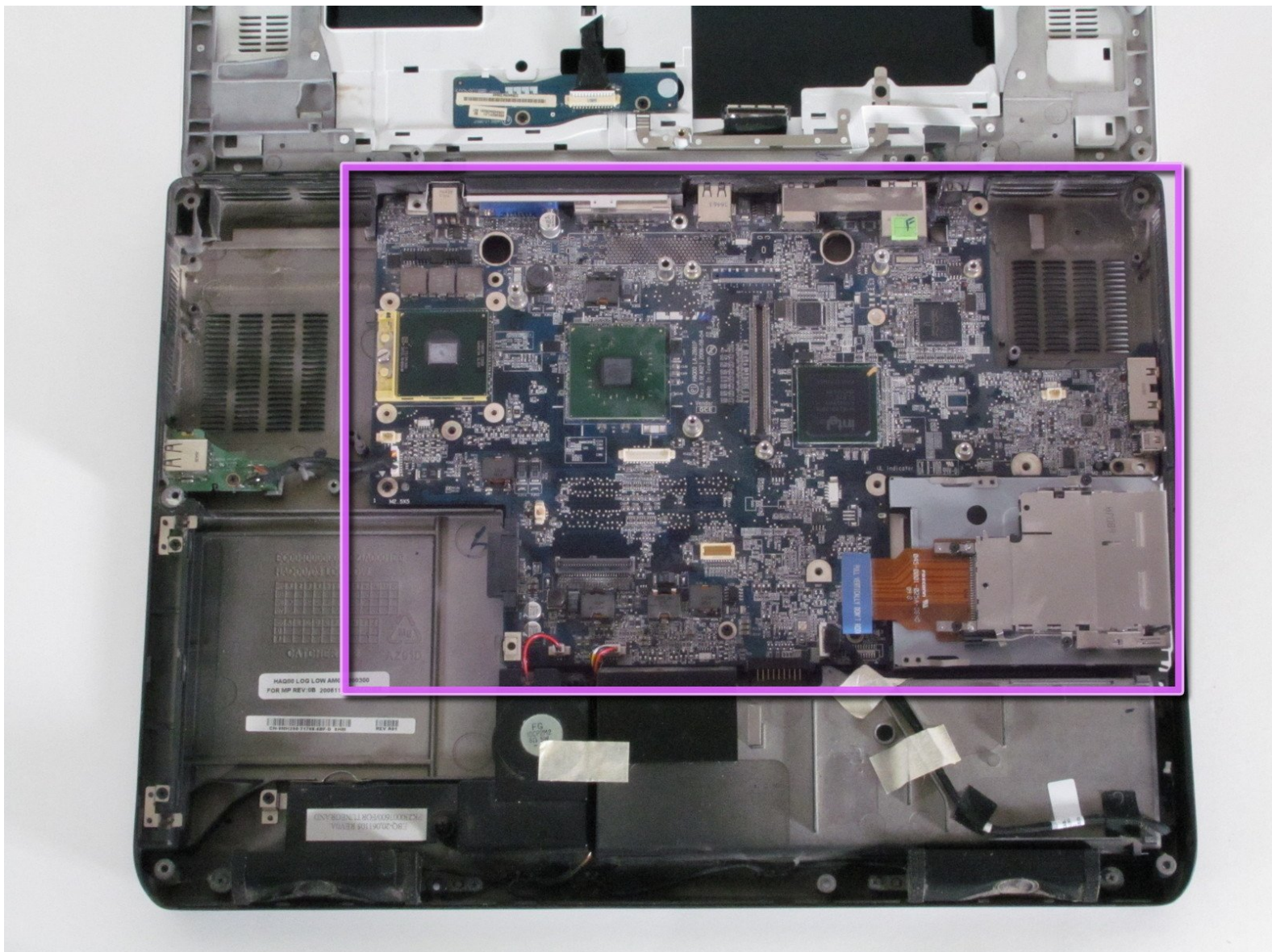




# Dell Inspiron E1705 Motherboard Replacement

This guide will show you, step by step, how to install a new motherboard.

Written By: Malik Shahbal

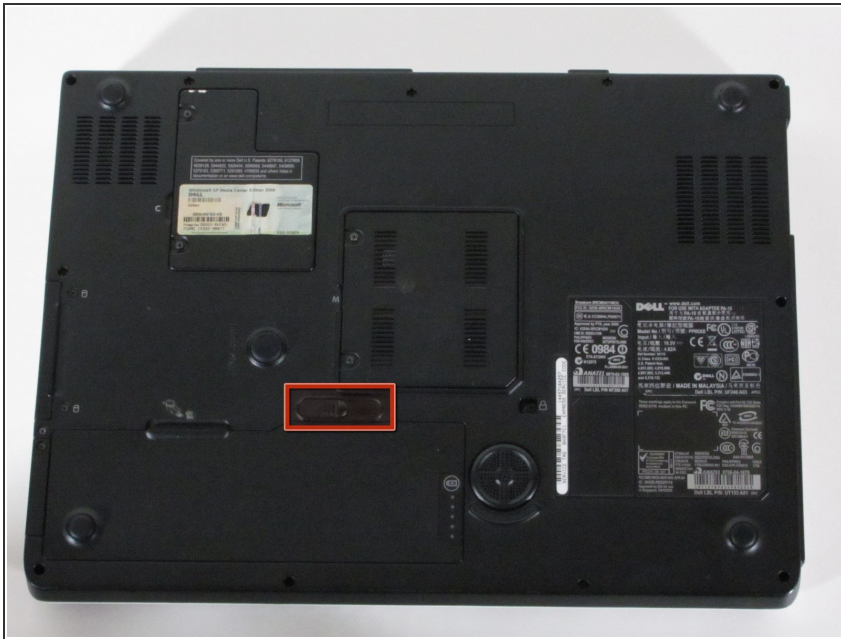




## TOOLS:

- [Phillips #1 Screwdriver](#) (1)
- [iFixit Opening Tools](#) (1)

## Step 1 — Battery



- ⚠ Make sure that the computer is turned off and is disconnected from external power source.
- Turn it upside down and locate the battery release switch.

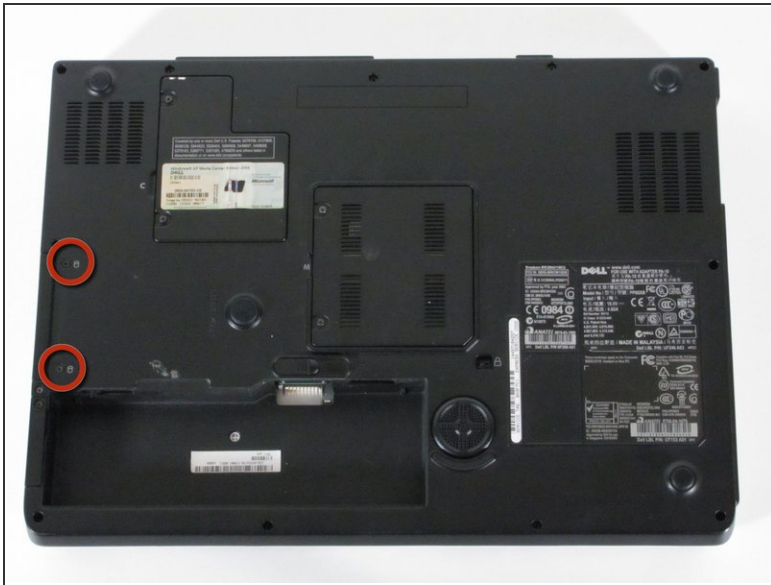
## Step 2



- While holding the switch in the open position, lift out the battery.
- ⓘ If you plan to work on any internal laptop components, press and hold the power button for 5 seconds. This will dissipate any residual charge on the motherboard to prevent electrical shock when you begin to handle it.

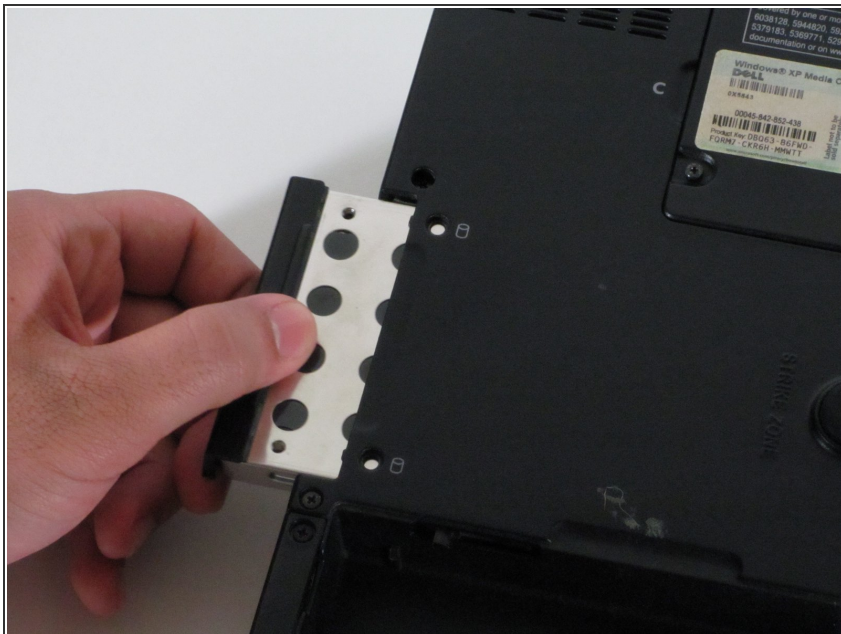


## Step 3 — Hard Drive



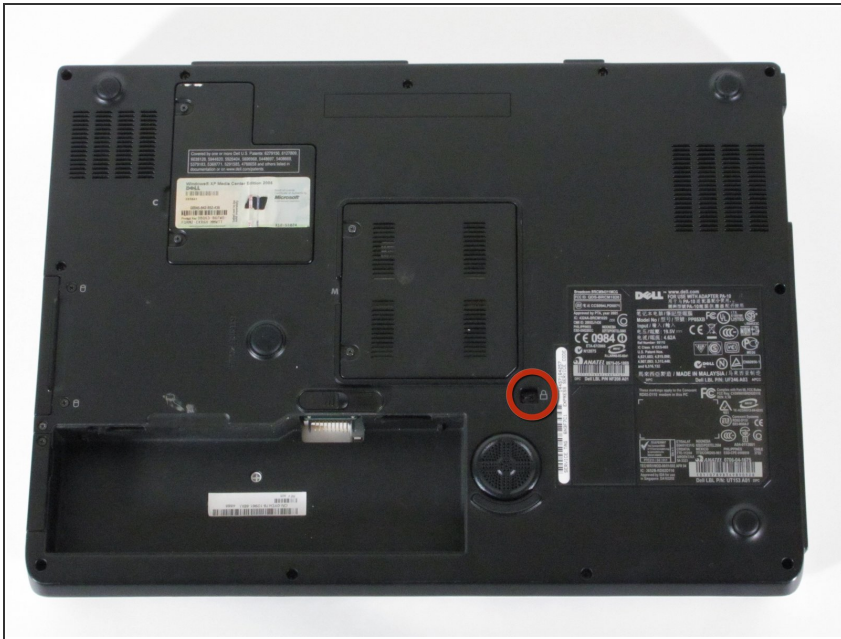
- Remove the two Phillips #1 screws on the left side of the computer, just above the battery compartment.
- ⓘ These screws hold the hard drive tray into the hard drive compartment.

## Step 4



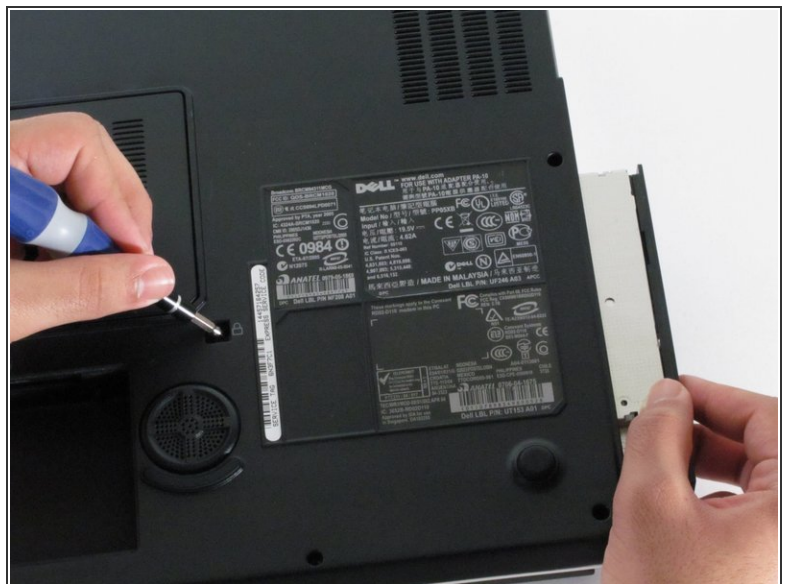
- Slide the hard drive tray out of the hard drive compartment.

## Step 5 — Optical Drive



- Locate and remove the screw shown
- It is labeled with a lock symbol

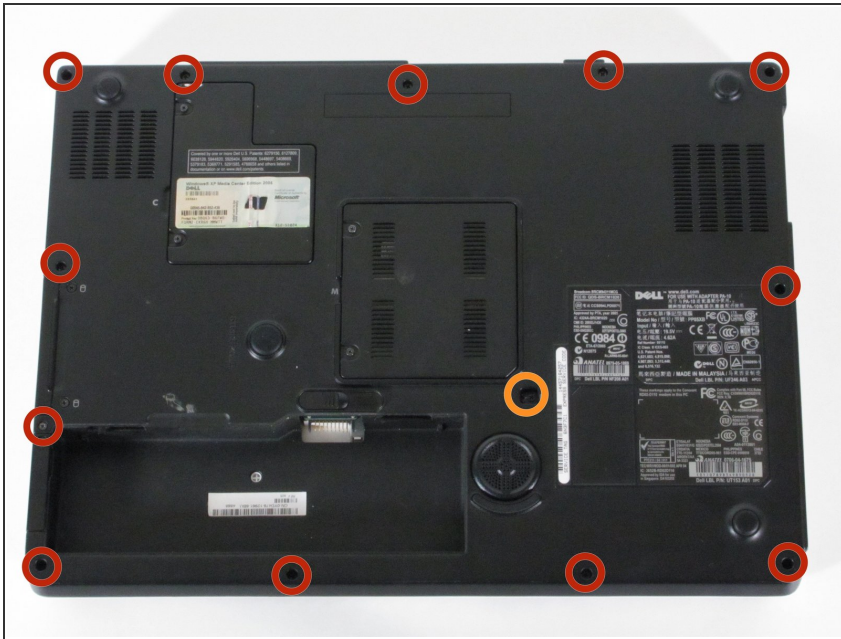
## Step 6



- Use the screwdriver to gently push the optical drive out



## Step 7 — Lower Case



- Remove the 12 Phillips #1 screws from the edges of the lower case.
- You may also need to remove the central screw next to the lock icon.

## Step 8



- Turn the computer back over and tilt the screen open.
- Use the plastic opening tool to carefully pry the panel out as shown in the pictures

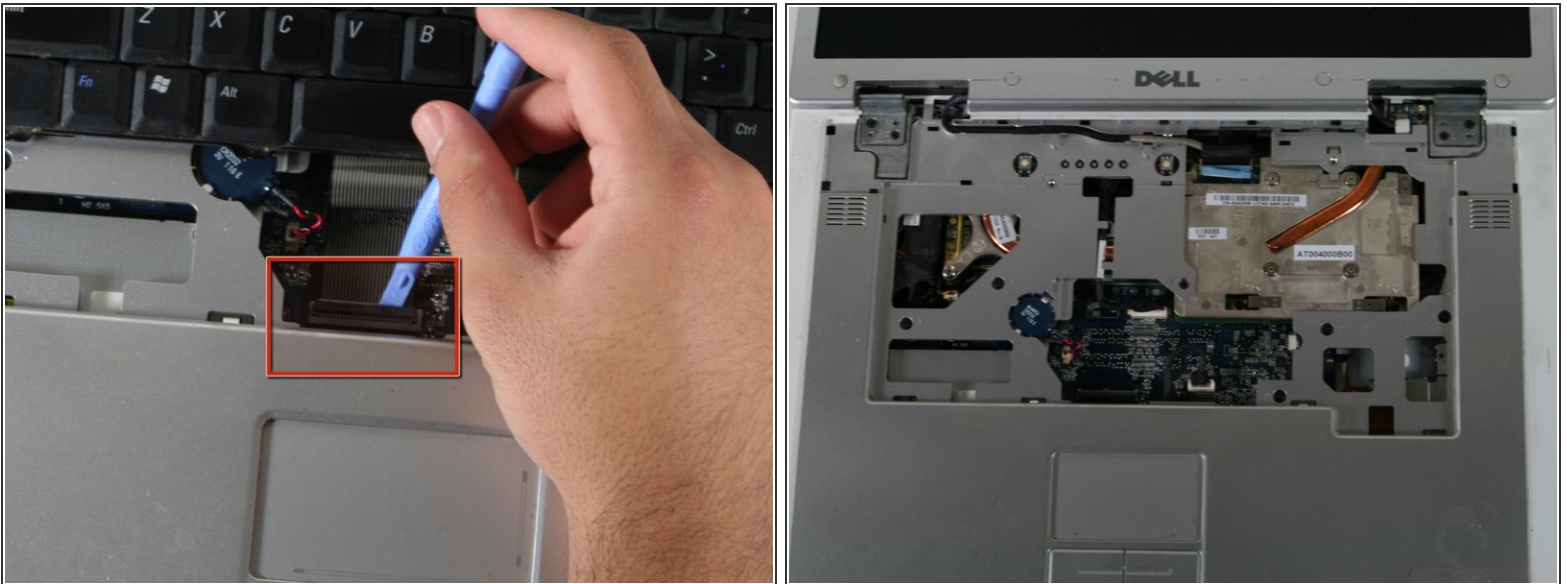
⚠ Remove the plastic panel carefully.

## Step 9



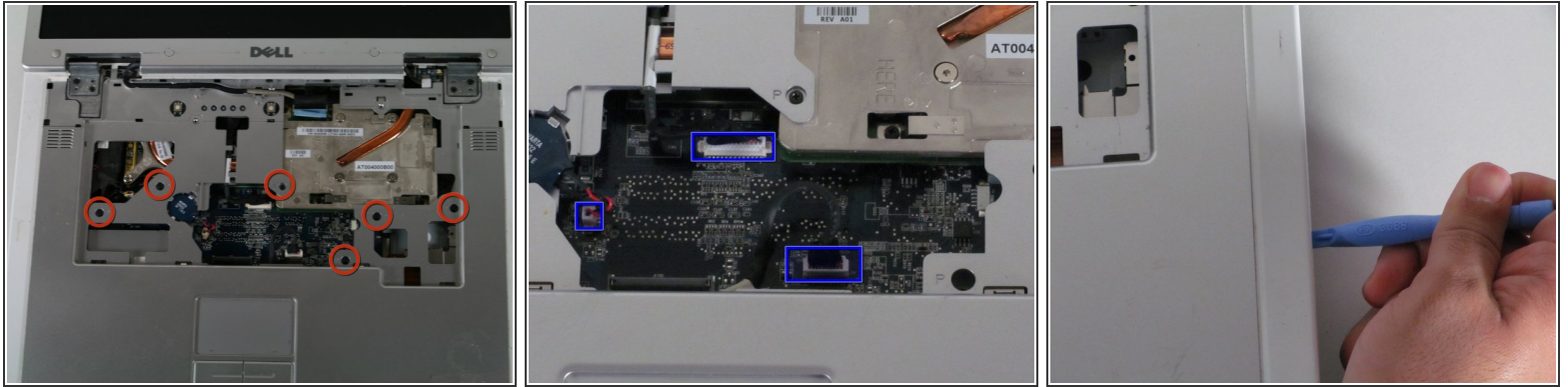
- Use the small Phillips head screwdriver to remove the screws circled in red.
- Gently lift the keyboard up and rest it just below the screen as shown in the picture.
- The keyboard will still be connected to the motherboard.

## Step 10



- Before removing the keyboard completely, use the plastic opening tool to gently lift the clamp connecting the keyboard to the motherboard.
- Once the keyboard has been disconnected, remove the keyboard completely.

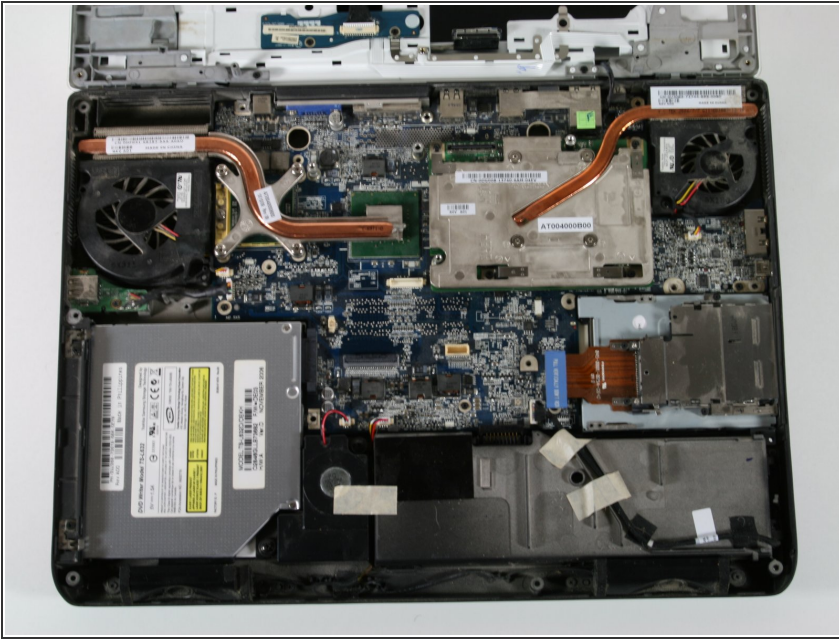
## Step 11



- Using a Phillips head screwdriver, remove the screws shown in the image. They all have the letter "P" next to them.
- Carefully unplug the connections shown.
- ⓘ Don't forget the display cable. It is slightly to the right of the Dell logo at the top.
- Also, the wireless cables on the right side may prevent moving the upper case out of the way.
- Once the screws have been removed and the connections unplugged, use the plastic opening tool to gently separate the panel from the lower case.

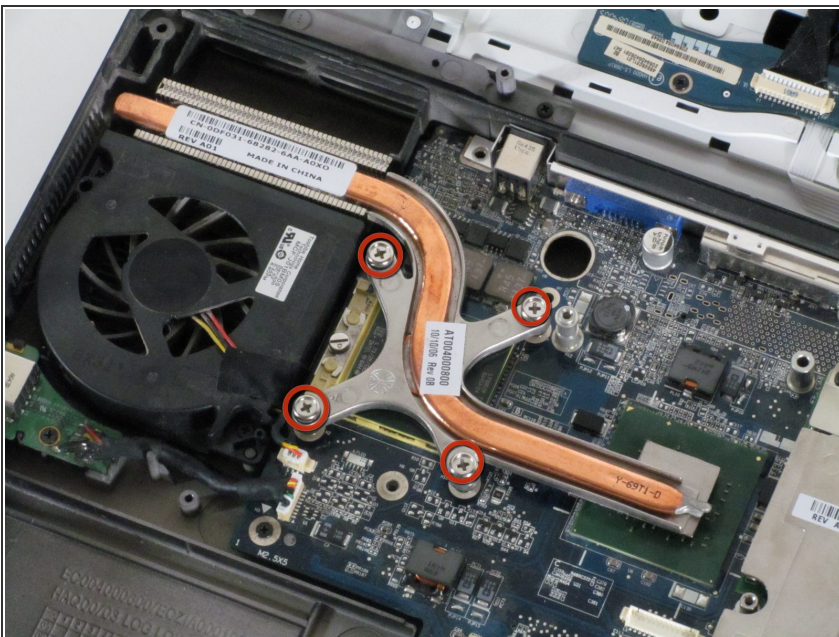


## Step 12



- Remove the plastic case by gently bending back towards the screen. You can bend the screen all the way back if that helps.
- ❗ For the motherboard the optical drive will be removed already. However for the lower case it is not necessary that it be taken out.
- ⚠ If you are having trouble removing the upper plastic case (and LCD) from the lower case, there may still be a wire connected to the Wi-Fi adapter. Turn the laptop over, open the Wi-Fi module access panel and remove the + and - leads for the Wi-Fi antenna.

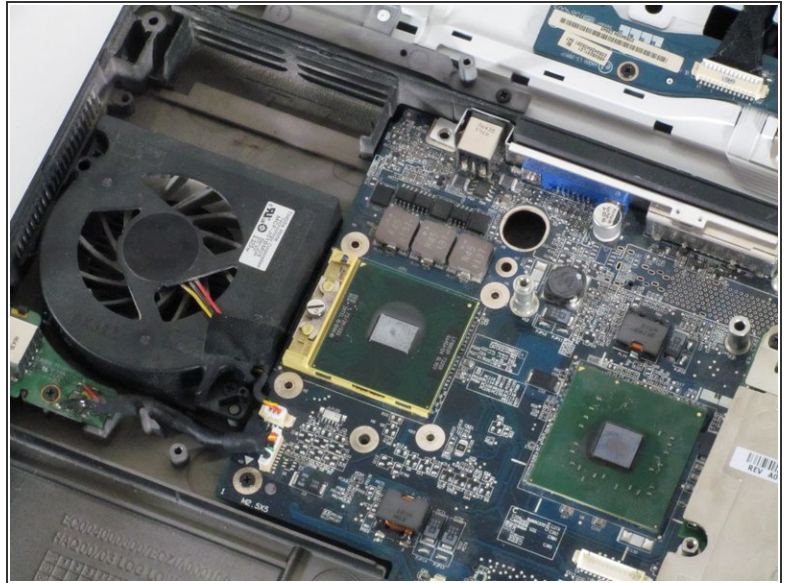
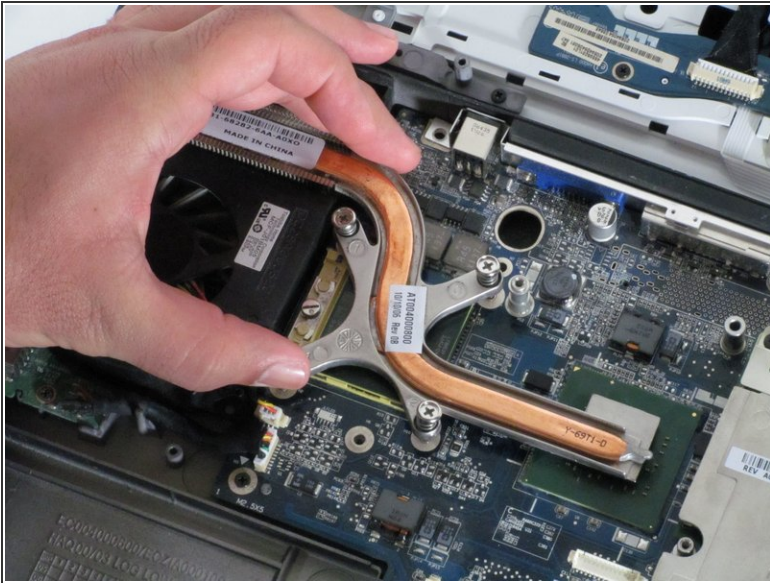
## Step 13 — Heat Sink



- Unscrew the 4 screws shown in the picture.
- ❗ Screws will not come out all the way.

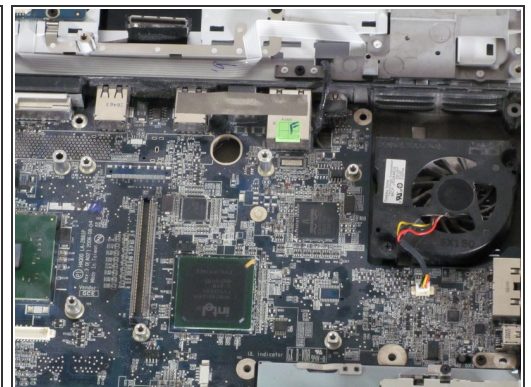
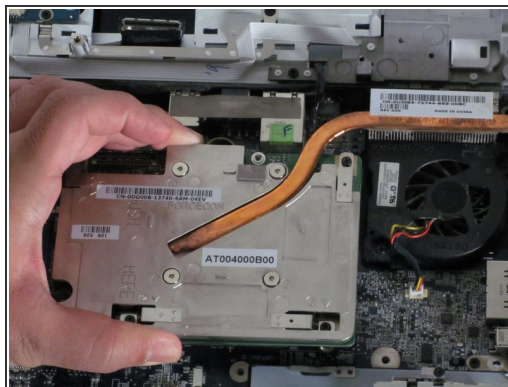
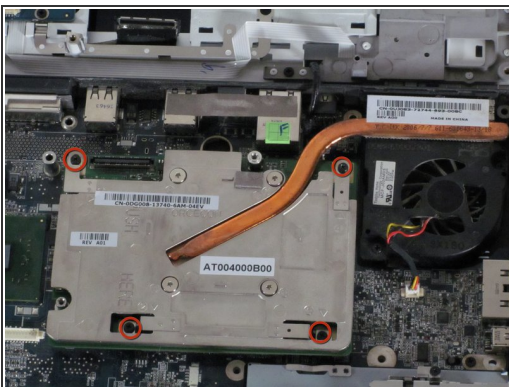


## Step 14



- Remove the heat sync gently

## Step 15



- i** The right heat sync is connected to the videocard. To remove the heat sync requires also removing the videocard.

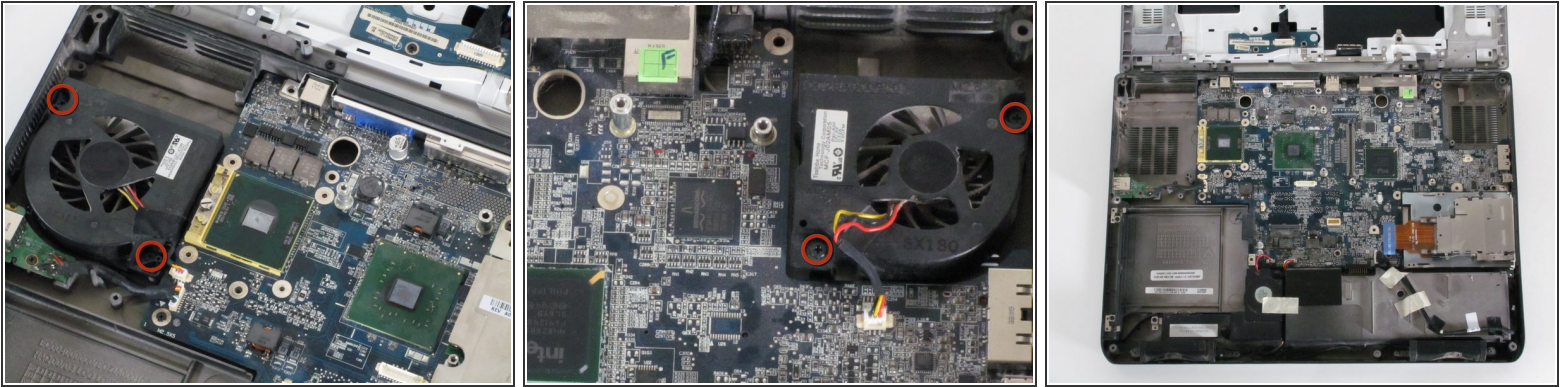
- Remove the 4 screws indicated in the first picture

- i** Screws will not totally come out.

- Gently lift up the videocard and heat sync from the motherboard.

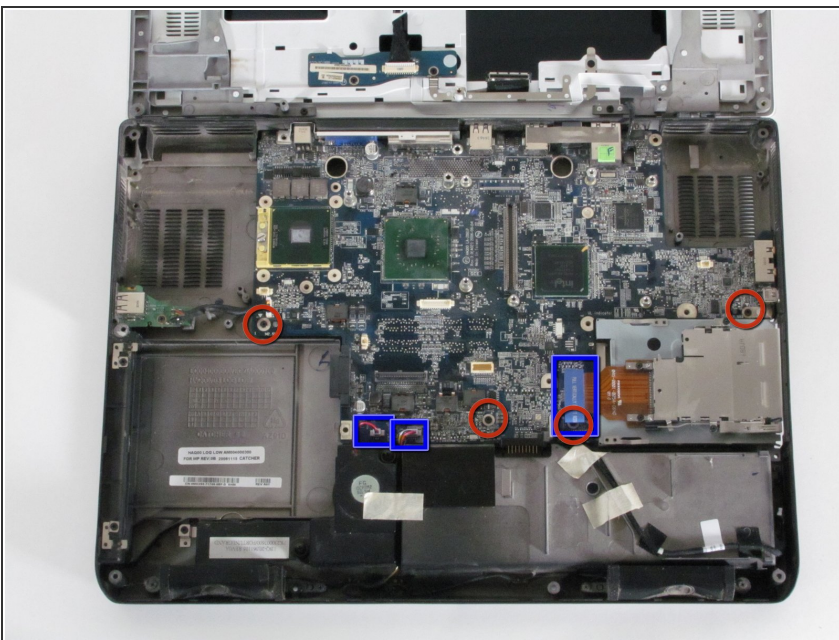


## Step 16 — Motherboard



- Remove both fans from the computer. This will make it easier to remove the motherboard.
- Remove the screws in the photos to remove the fans.

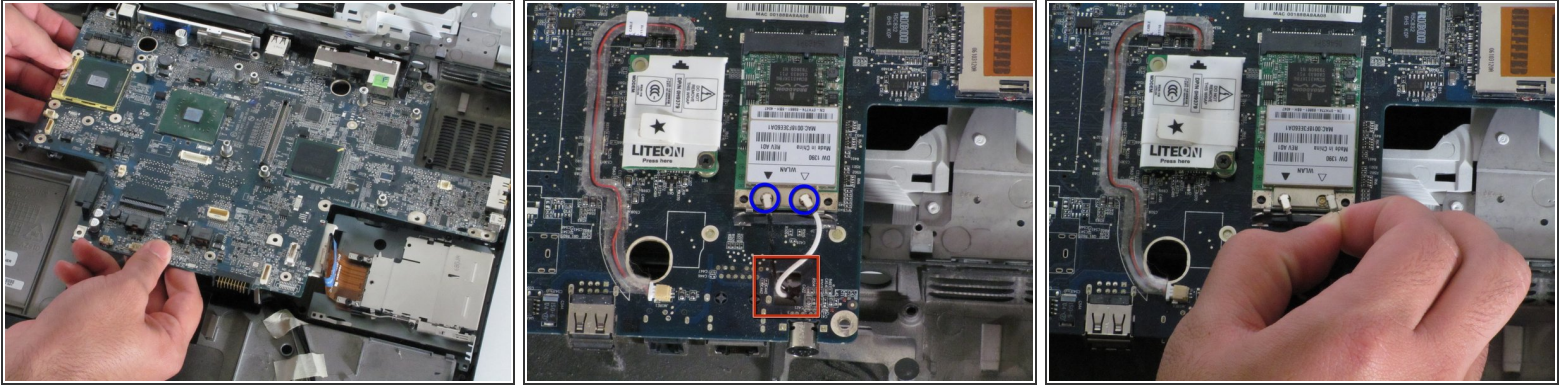
## Step 17



- Unplug the shown leads by gently pulling them up.
- Remove the shown screws from the motherboard

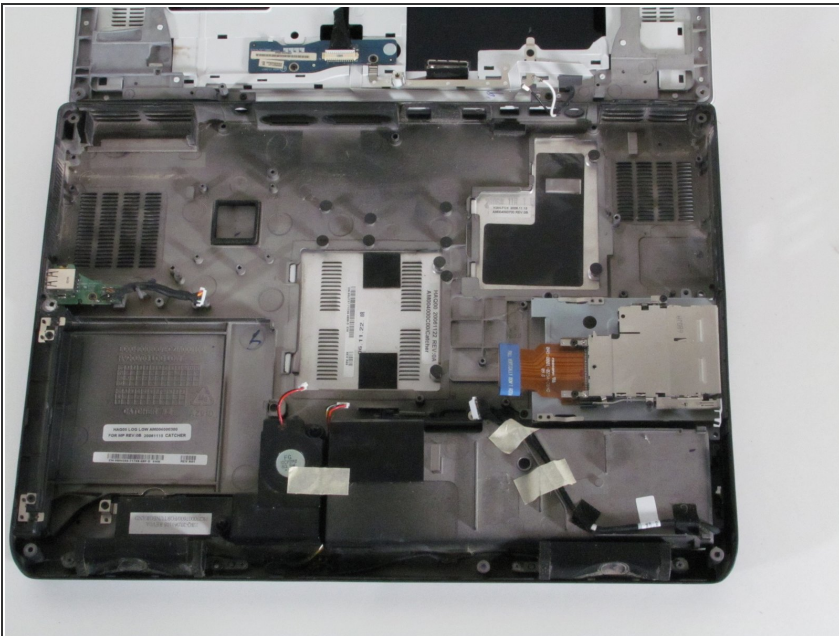


## Step 18



- Gently remove the motherboard from the laptop by simultaneously lifting and pulling away from the sides.
- Once the motherboard is free, flip it over, towards the screen of the laptop and gently remove the black and white wire from the wireless card.
- Once the wires are disconnected, pull them through the hole and completely remove the motherboard from the computer.

## Step 19



- Your computer should look like the computer in the photo without the motherboard.

To reassemble your device, follow these instructions in reverse order.