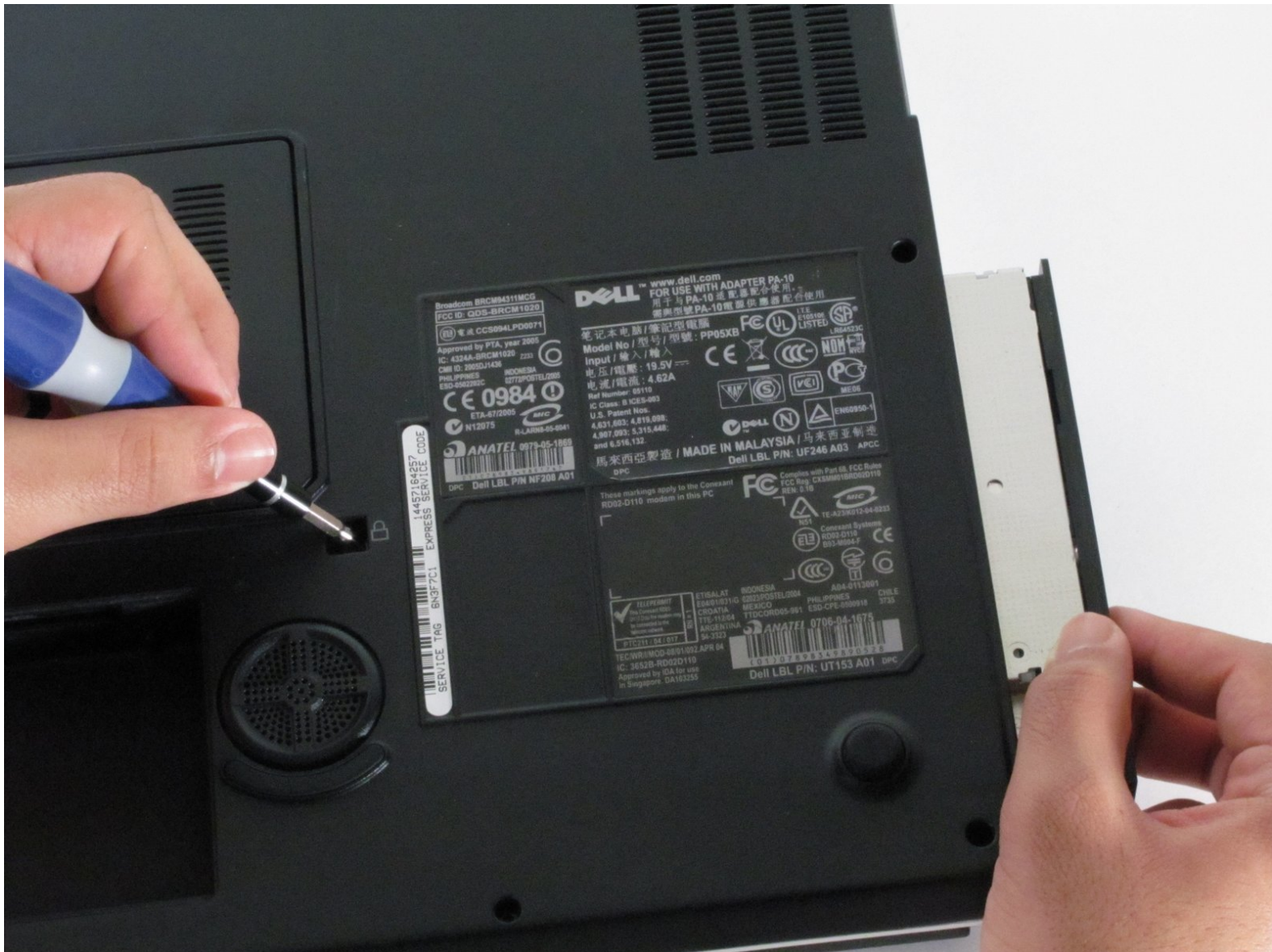




Dell Inspiron E1705 Optical Drive Replacement

In this guide we will be showing you how to install an optical drive to you Dell Inspiron E1705

Written By: Evan Fairchild



INTRODUCTION

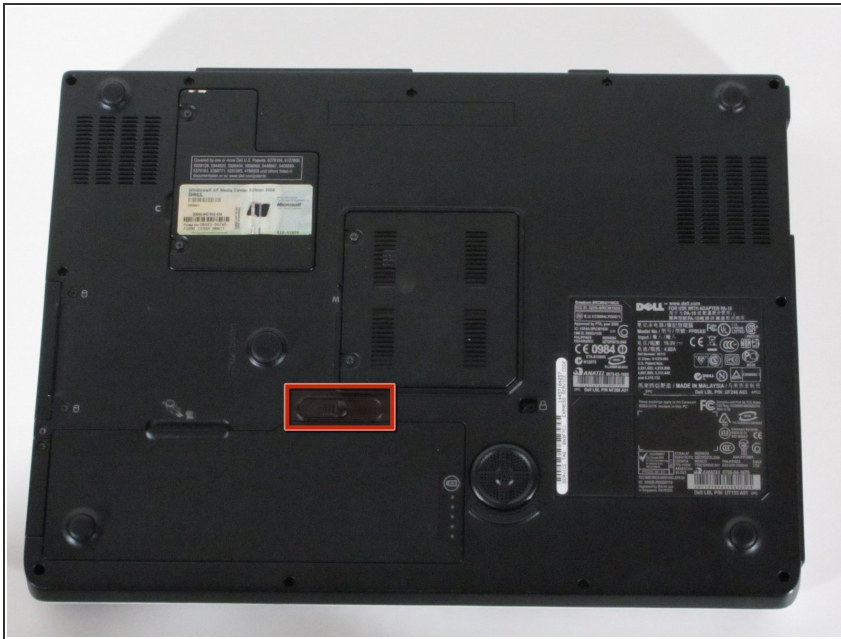
Before taking apart your computer at home be sure that your problem cannot be resolved using our troubleshooting guide for this item, or that it is a problem that does not require disassembly.



TOOLS:

- [Phillips #1 Screwdriver](#) (1)
-

Step 1 — Battery



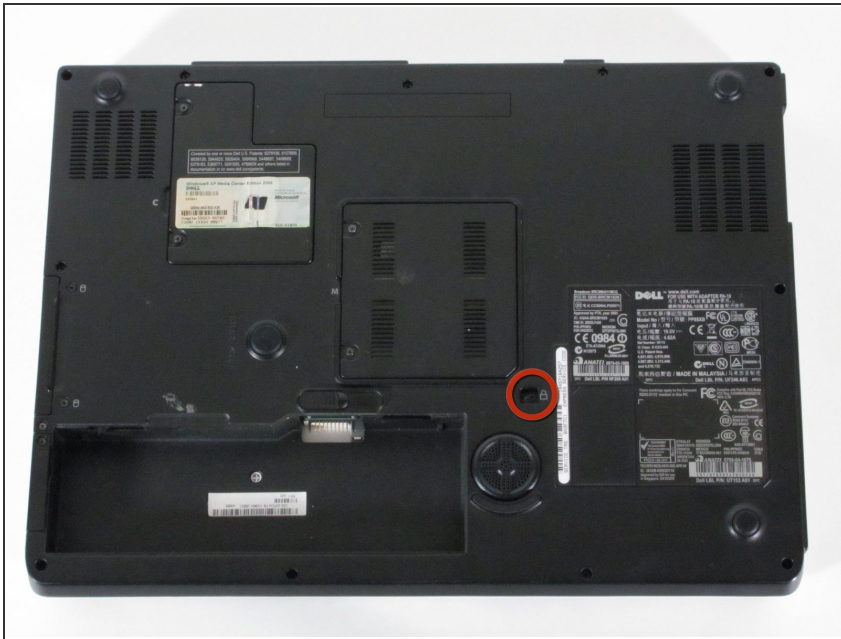
- ⚠ Make sure that the computer is turned off and is disconnected from external power source.
- Turn it upside down and locate the battery release switch.

Step 2



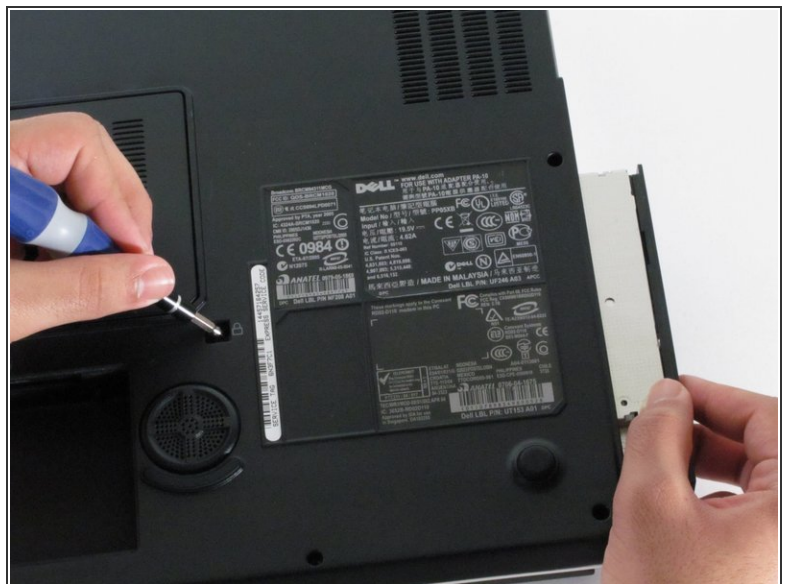
- While holding the switch in the open position, lift out the battery.
- ⓘ If you plan to work on any internal laptop components, press and hold the power button for 5 seconds. This will dissipate any residual charge on the motherboard to prevent electrical shock when you begin to handle it.

Step 3 — Optical Drive



- Locate and remove the screw shown
- It is labeled with a lock symbol

Step 4



- Use the screwdriver to gently push the optical drive out

To reassemble your device, follow these instructions in reverse order.