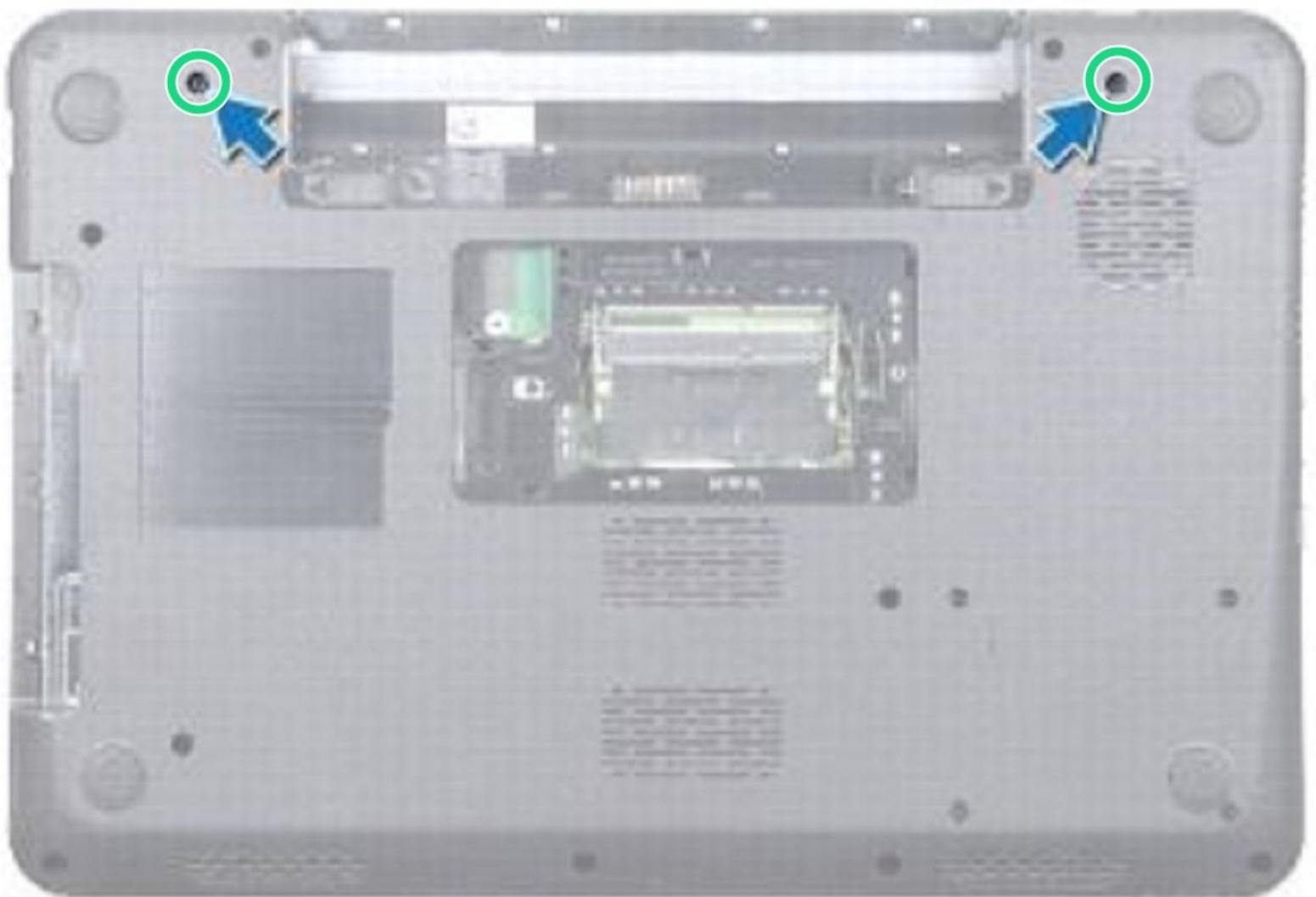




Dell Inspiron M5010 Display Assembly Replacement

Written By: Terrence15



INTRODUCTION

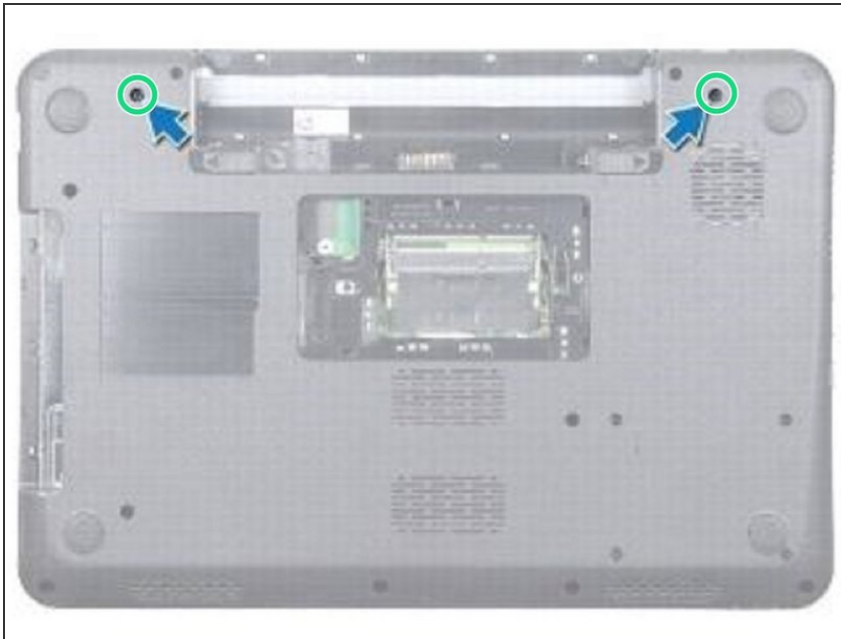
In this guide, we will be showing you how to remove and replace the Display Assembly.



TOOLS:

- [Phillips #0 Screwdriver](#) (1)
-

Step 1 — Remove the Screws



⚠ WARNING: Before working inside your computer, read the safety information that shipped with your computer. Follow the instructions in [Before You Begin](#).

⚠ CAUTION: To avoid electrostatic discharge, ground yourself by using a wrist grounding strap or by periodically touching an unpainted metal surface (such as a connector on your computer).

- Turn the computer over and remove the two screws.

Step 2 — Disconnect the Cables



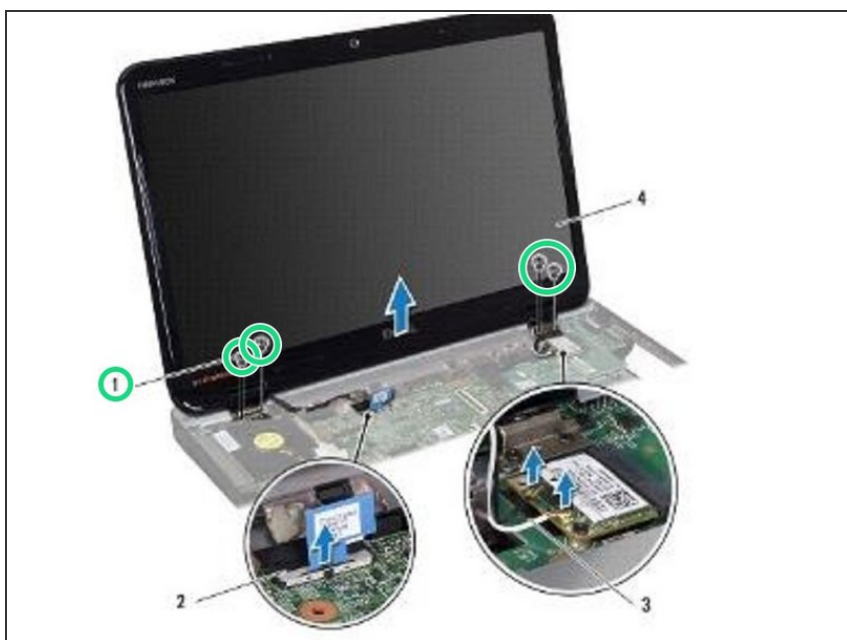
- Disconnect the Mini-Card antenna cables from the Mini-Card.

Step 3 — Disconnect the Display Cable



- Disconnect the display cable from the connector on the system board and remove it from the routing guide.

Step 4 — Remove the Screws



- Remove the four screws (two on each side) that secure the display assembly to the computer base.

Step 5 — Lifting the Display Assembly



- Lift and remove the display assembly out of the computer base.

Step 6 — Placing the Display Assembly



- Place the **NEW** display assembly in position and replace the four screws (two on each side) that secure the display assembly to the computer base.

Step 7 — Route the Display Cable



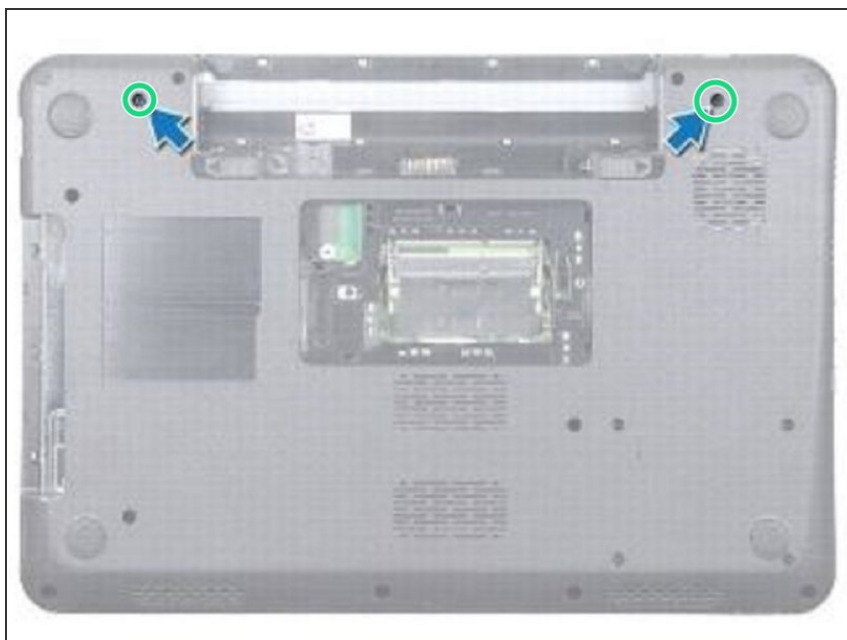
- Route the display cable into the routing guide and connect the cable to the connector on the system board.

Step 8 — Connecting the Mini-Card Antenna Cables



- Connect the Mini-Card antenna cables to the connectors on the Mini- Card.

Step 9 — Replace the Screws



- Turn the computer over and replace the two screws at the bottom of the computer.