



# Dell Inspiron M5010 Hard Drive Replacement

This guide will demonstrate how to remove the keyboard and palm rest in order to access the hard drive.

Written By: Sydney Moseley





## TOOLS:

- [iFixit 6 Inch Metal Ruler](#) (1)
- [Phillips #000 Screwdriver](#) (1)

## Step 1 — Battery

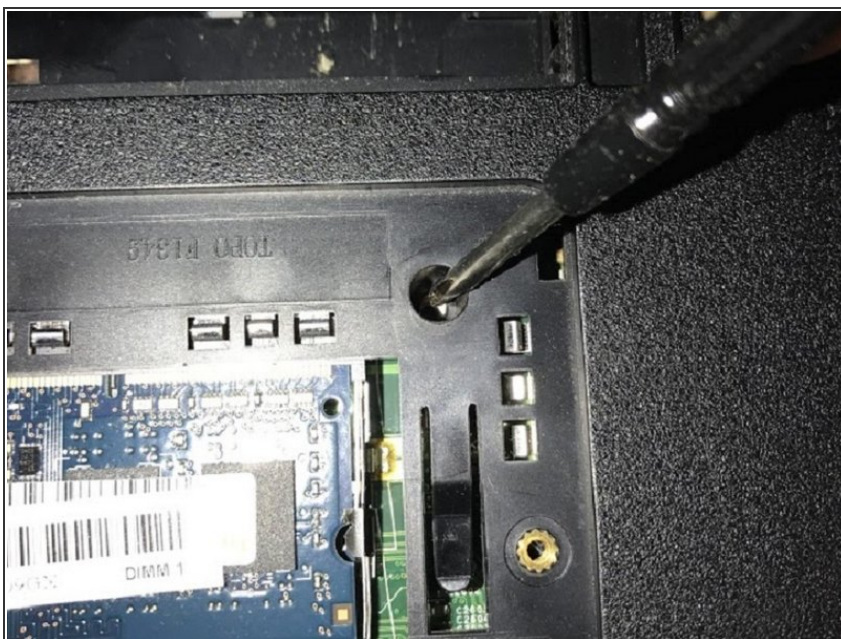


⚠ Make sure laptop is powered off before removing the battery.

- Slide both arrow tabs towards the outer edge of the computer to release the battery.

i Battery is not shown.

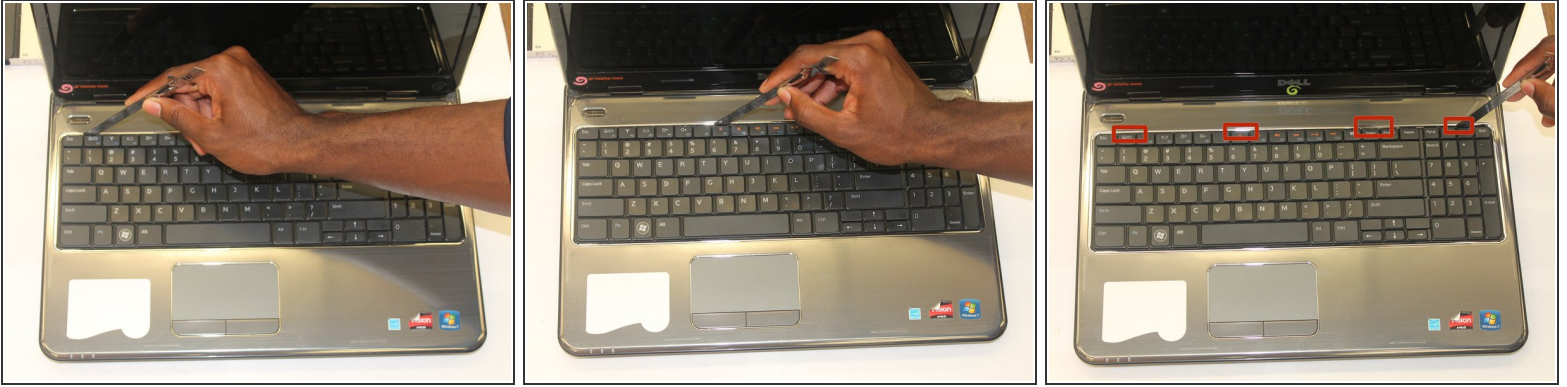
## Step 2 — Remove keyboard retaining screw



- Remove Keyboard retaining screw from bottom of laptop.



### Step 3



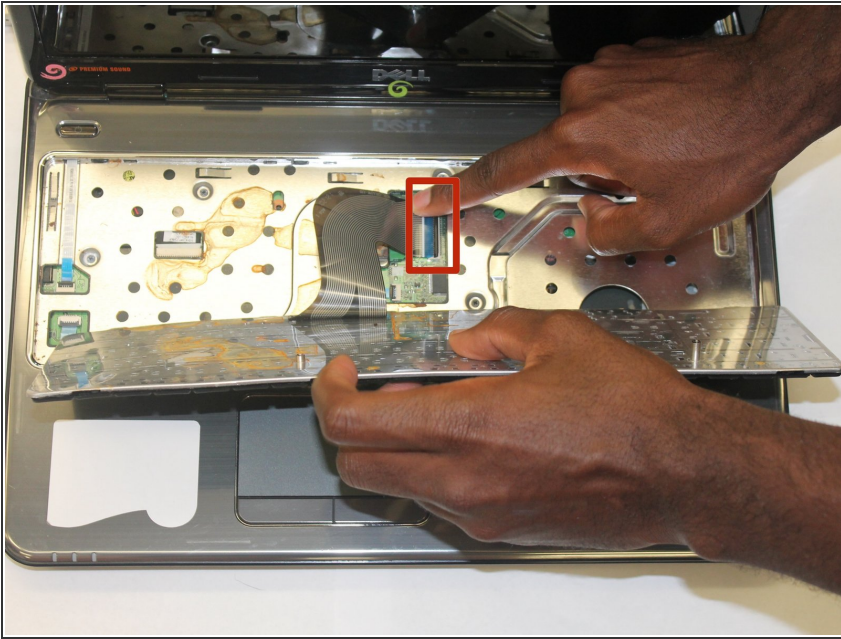
- Insert the 6 inch metal ruler, or another flat object into the holes in the top left of the keyboard, the top middle of the keyboard, and the top right of the keyboard to release the keyboard from the computer.
- There are a number of screws on the bottom that required to be removed prior to the keyboard being able to be lifted up.

### Step 4



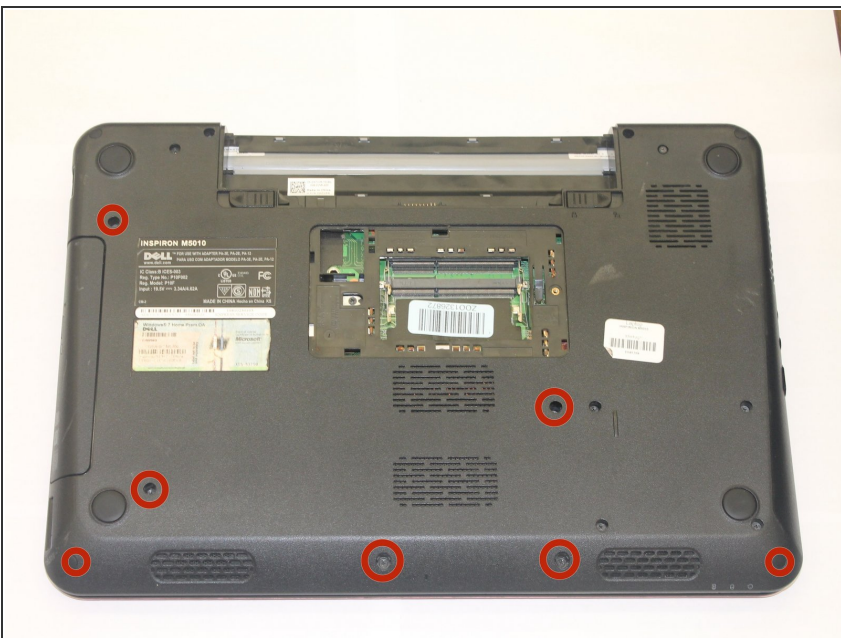
- Lift the keyboard up slightly and push forward in order to release bottom tabs.

## Step 5



- Pull the black tab up and then pull left on keyboard plug to release keyboard.

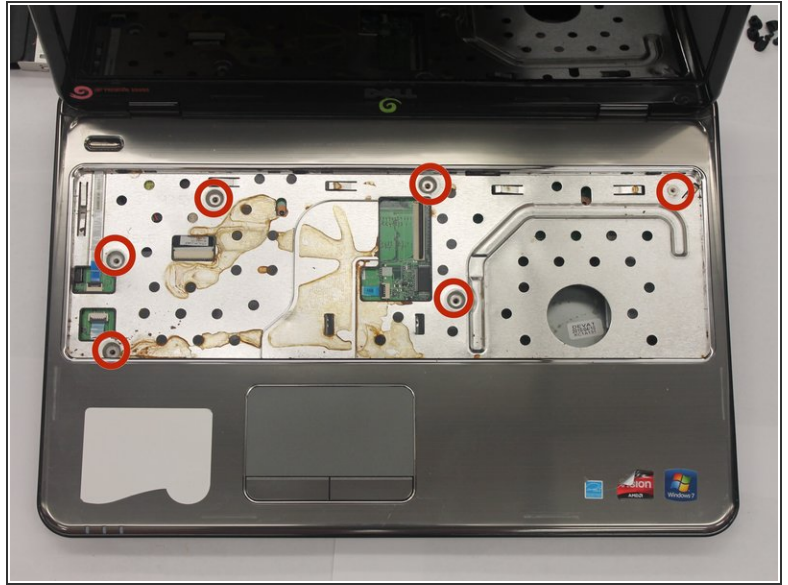
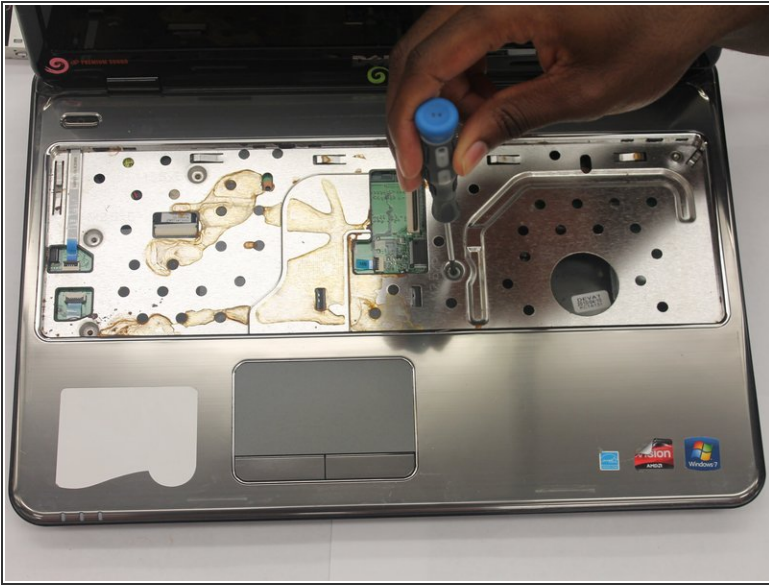
## Step 6 — Palm Rest



- Flip the laptop, so the bottom of the laptop is facing up.
- Remove the seven 6.0mm Phillip #000 screws indicated using the Phillips #000 screwdriver.

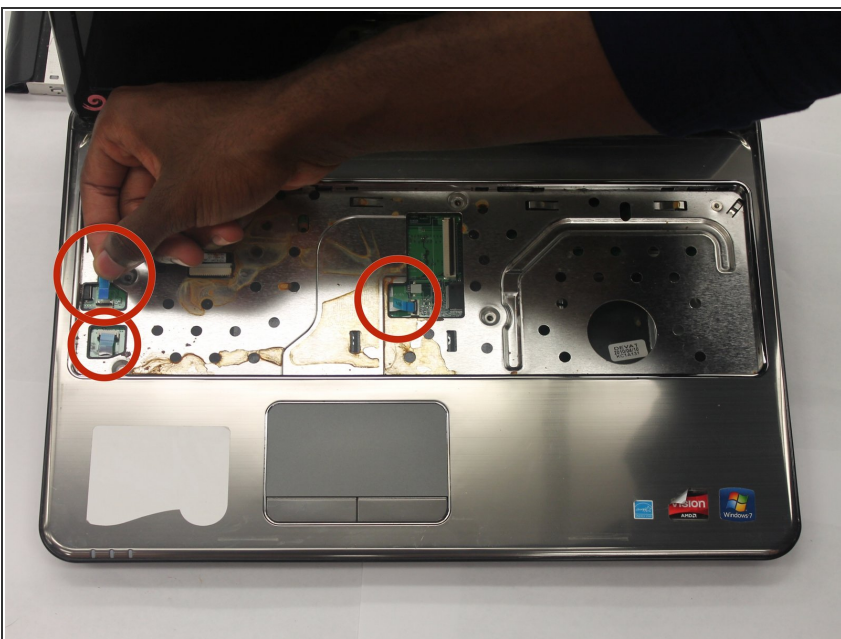


## Step 7



- Flip the laptop back over, so that the top of the laptop is facing up.
- Open the laptop.
- Remove all of the indicated 6.0 mm screws with the Phillips #000 screwdriver.

## Step 8



- Unplug the palm rest cables by lifting the black tab up and then pulling on the blue tabs.

## Step 9



- Carefully unsnap and remove the palm rest.
- i* Place your fingers inside the large circle in the lower right corner to get a good grip.

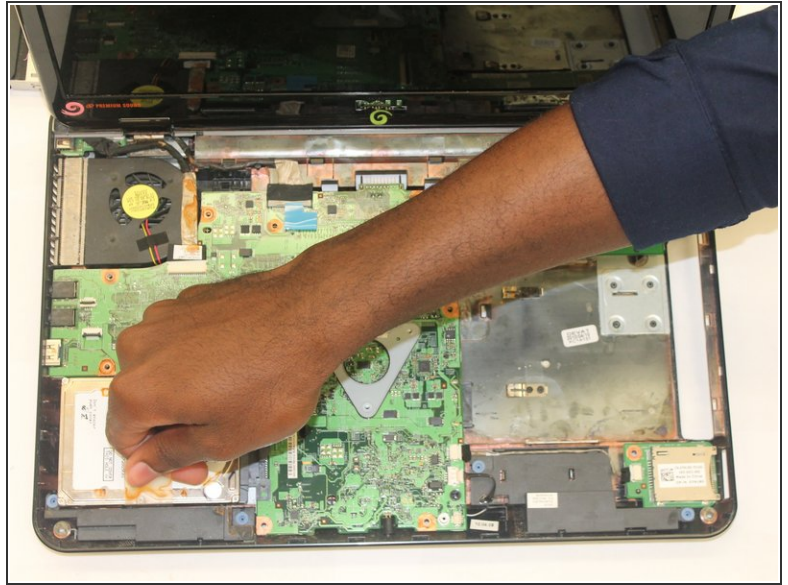
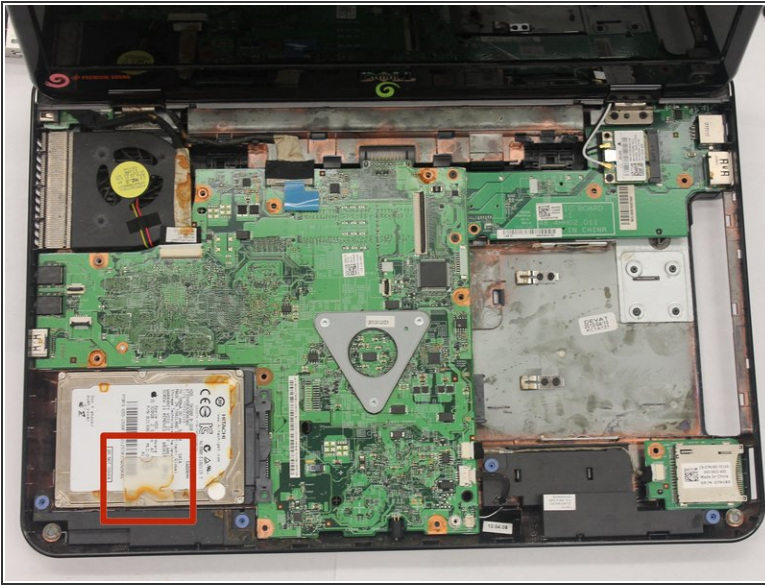
## Step 10 — Hard Drive



- Remove the 4 mm Hard Drive screws with the Phillips #000 screwdriver.



## Step 11



- Flip laptop over.
- Open lap top.
- Pull the clear tab attached to the hard drive and gently lift up the hard drive.

To reassemble your device, follow these instructions in reverse order.