



Dell Inspiron M5010 LCD Screen Replacement

Written By: April Poucher






TOOLS:


- [iFixit 6 Inch Metal Ruler](#) (1)
- [Phillips #000 Screwdriver](#) (1)
- [Spudger](#) (1)

Step 1 — Battery

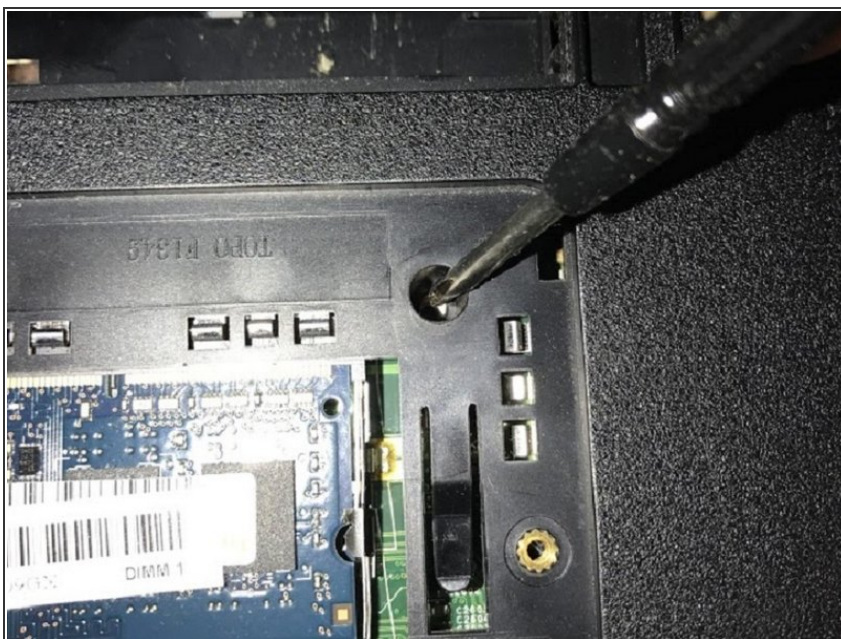


 Make sure laptop is powered off before removing the battery.

● Slide both arrow tabs towards the outer edge of the computer to release the battery.

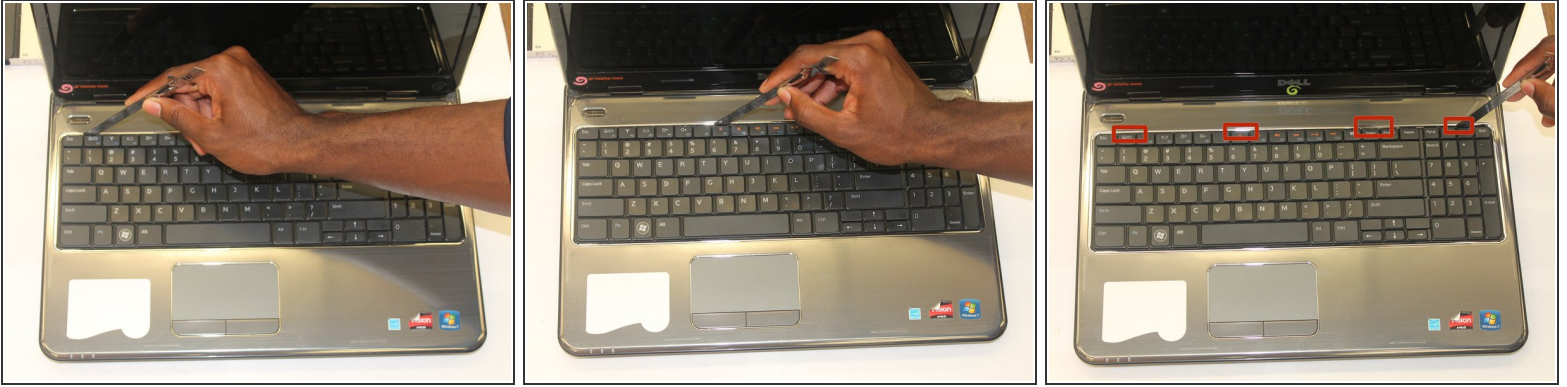
 Battery is not shown.

Step 2 — Remove keyboard retaining screw



● Remove Keyboard retaining screw from bottom of laptop.

Step 3



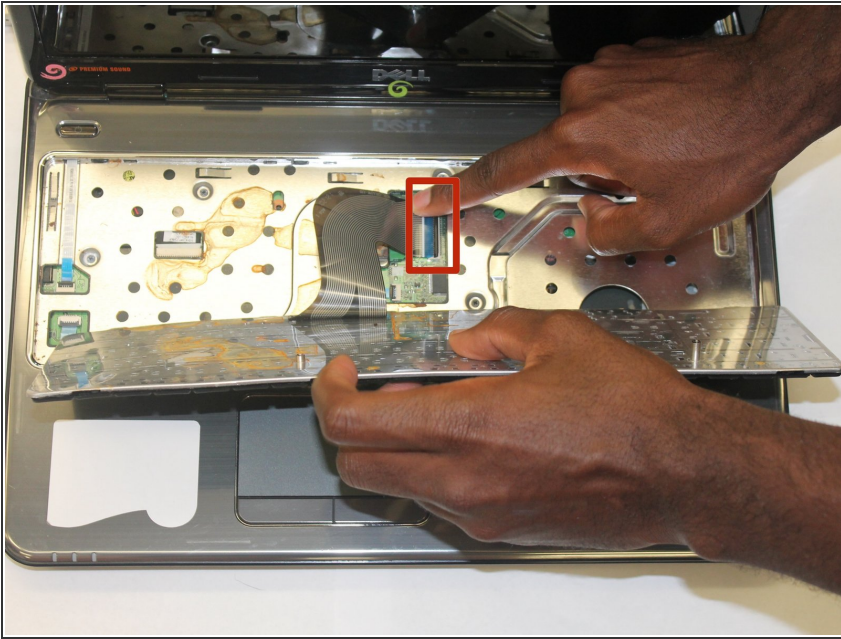
- Insert the 6 inch metal ruler, or another flat object into the holes in the top left of the keyboard, the top middle of the keyboard, and the top right of the keyboard to release the keyboard from the computer.
- There are a number of screws on the bottom that required to be removed prior to the keyboard being able to be lifted up.

Step 4



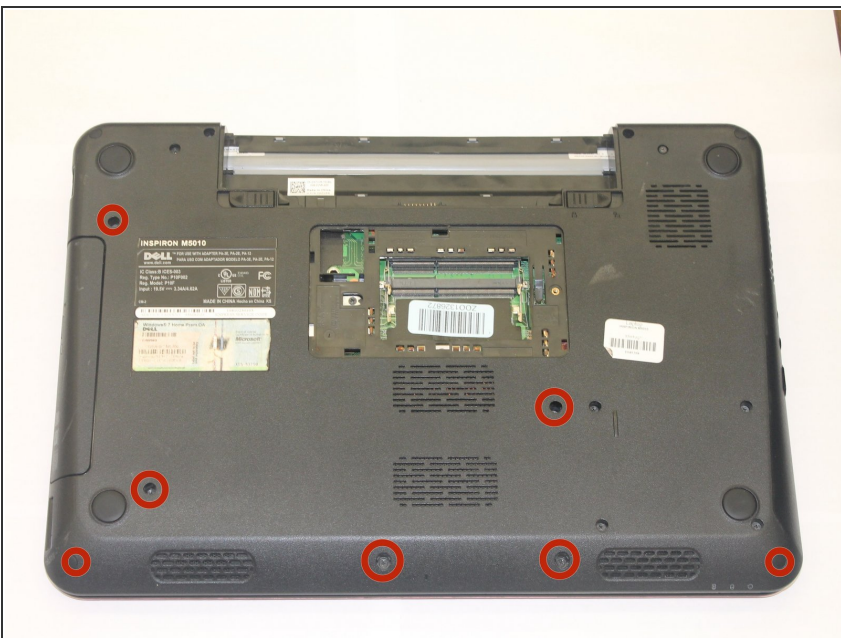
- Lift the keyboard up slightly and push forward in order to release bottom tabs.

Step 5



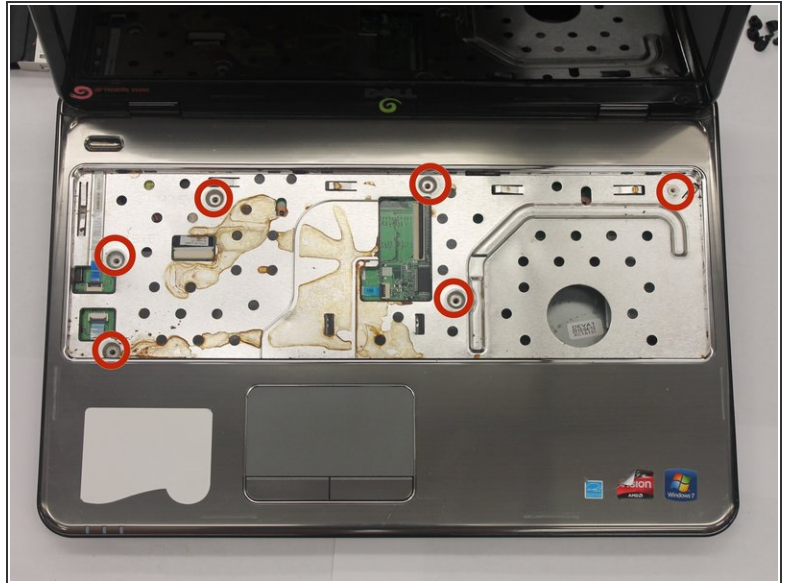
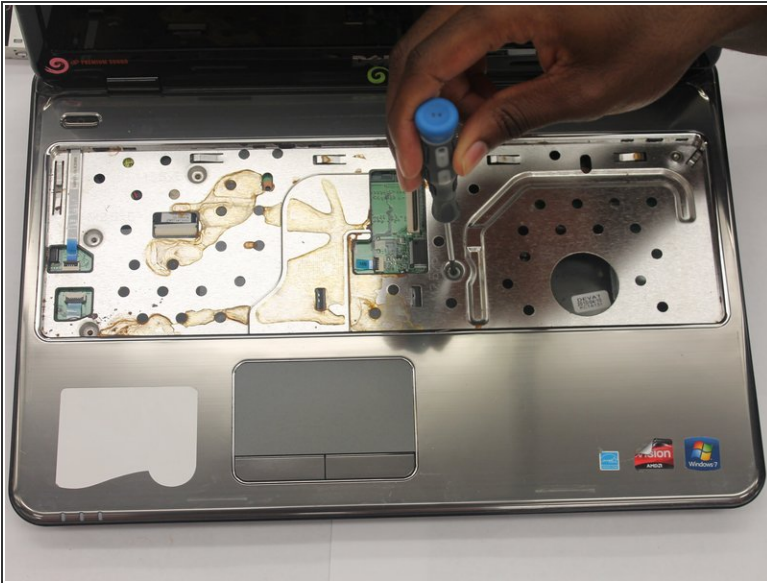
- Pull the black tab up and then pull left on keyboard plug to release keyboard.

Step 6 — Palm Rest



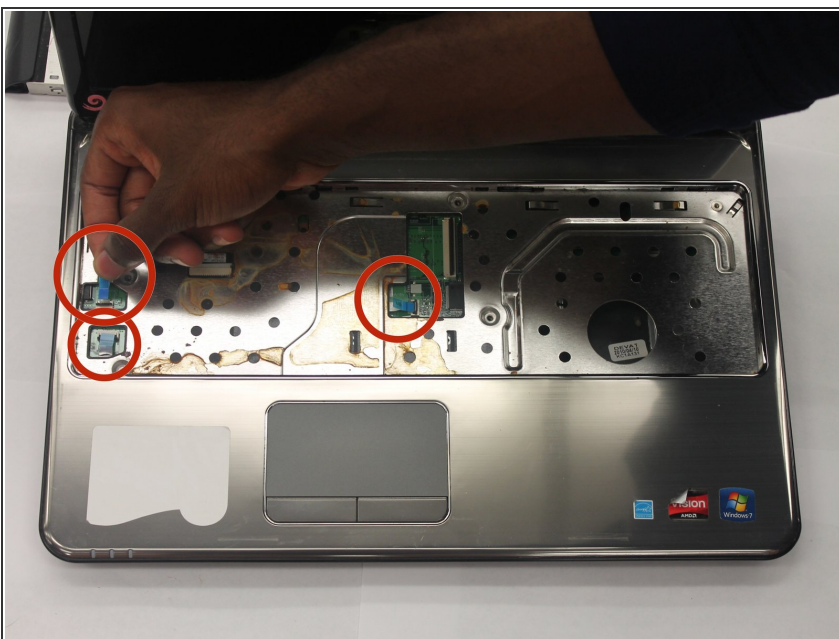
- Flip the laptop, so the bottom of the laptop is facing up.
- Remove the seven 6.0mm Phillip #000 screws indicated using the Phillips #000 screwdriver.

Step 7



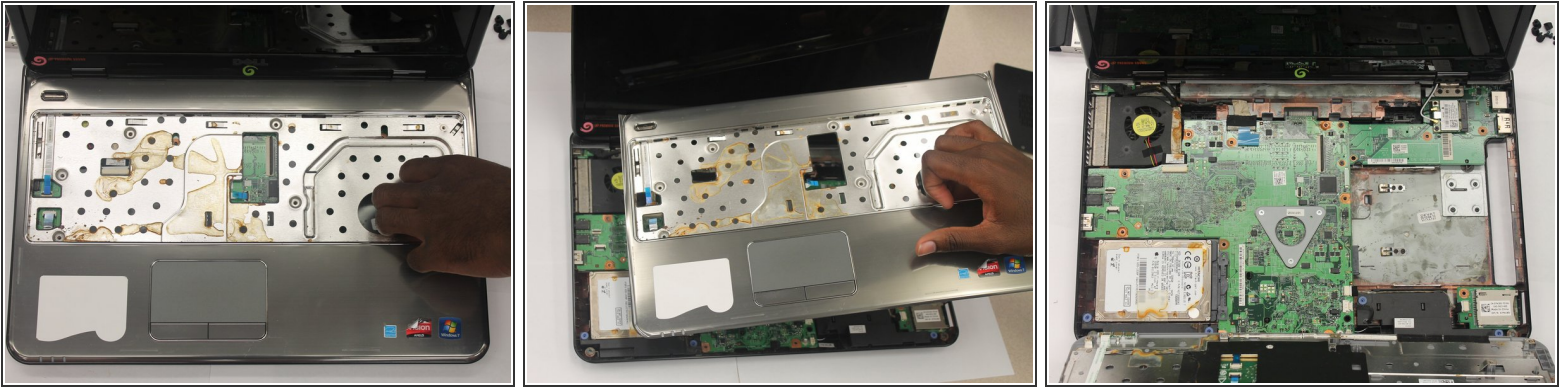
- Flip the laptop back over, so that the top of the laptop is facing up.
- Open the laptop.
- Remove all of the indicated 6.0 mm screws with the Phillips #000 screwdriver.

Step 8



- Unplug the palm rest cables by lifting the black tab up and then pulling on the blue tabs.

Step 9



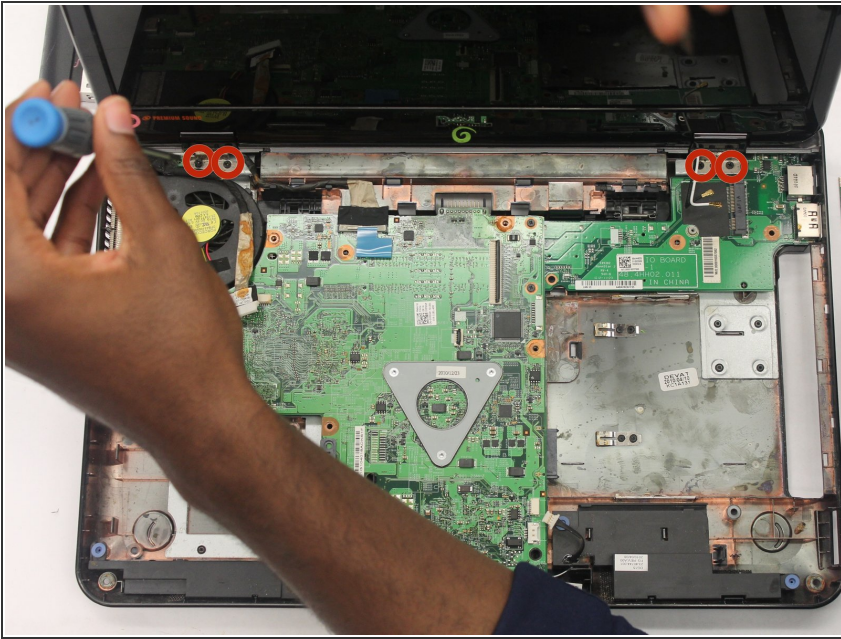
- Carefully unsnap and remove the palm rest.
- i** Place your fingers inside the large circle in the lower right corner to get a good grip.

Step 10 — LCD Screen



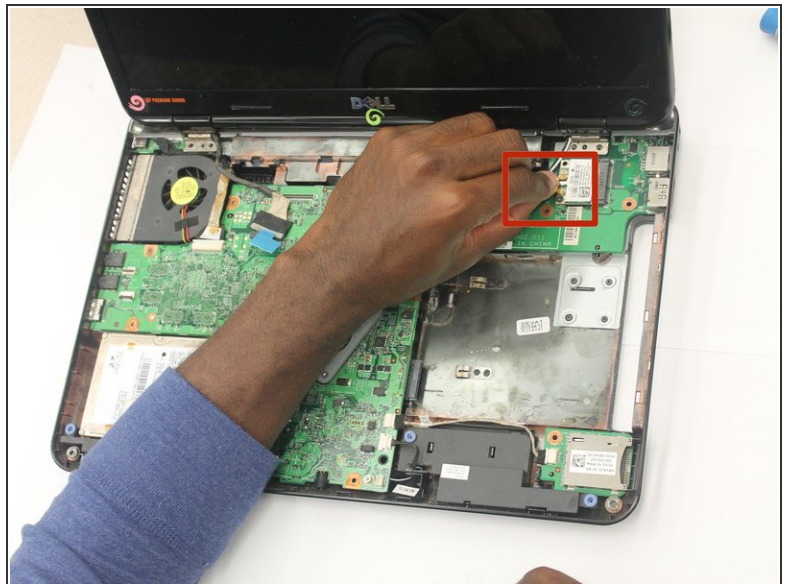
- Flip the laptop over to its backside.
- Using the Phillips #000 Screwdriver remove the six indicated 6.0mm Phillips #000 screws.

Step 11



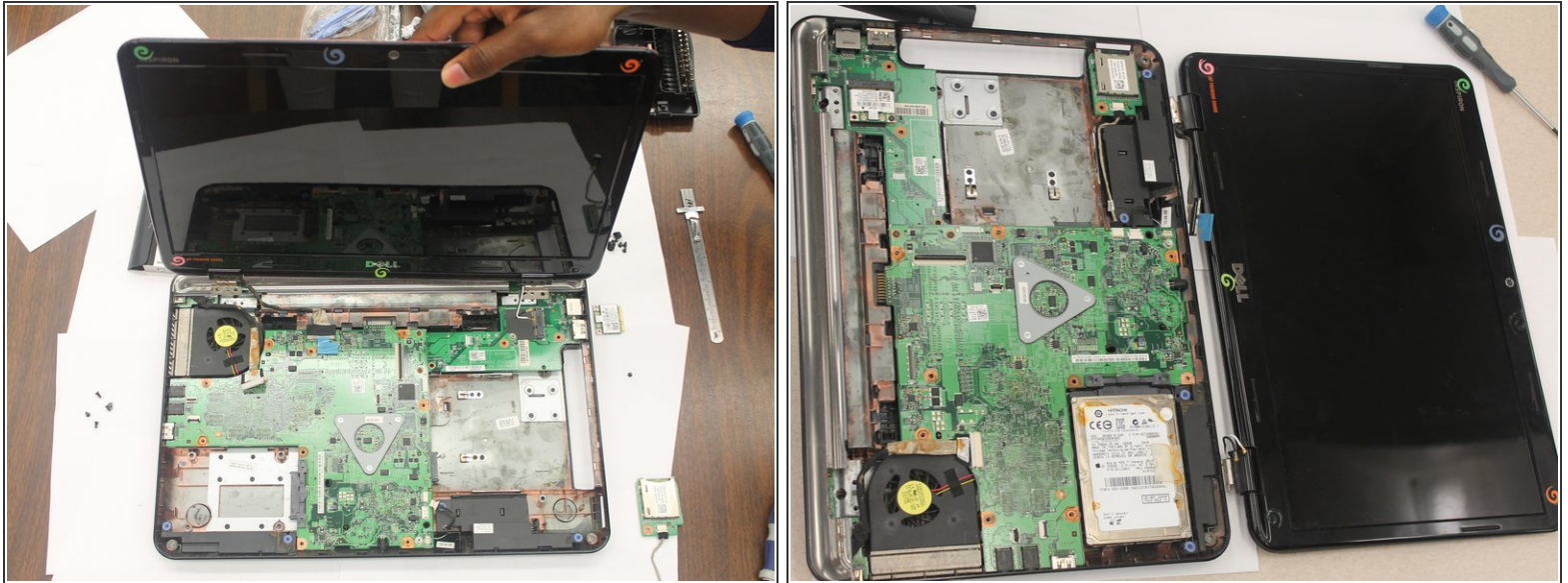
- Flip the laptop over to its front side and open the laptop.
- Remove the four 6.0mm Phillips #000 screws holding the screen to the base of the laptop using a Phillips #000 Screwdriver.

Step 12



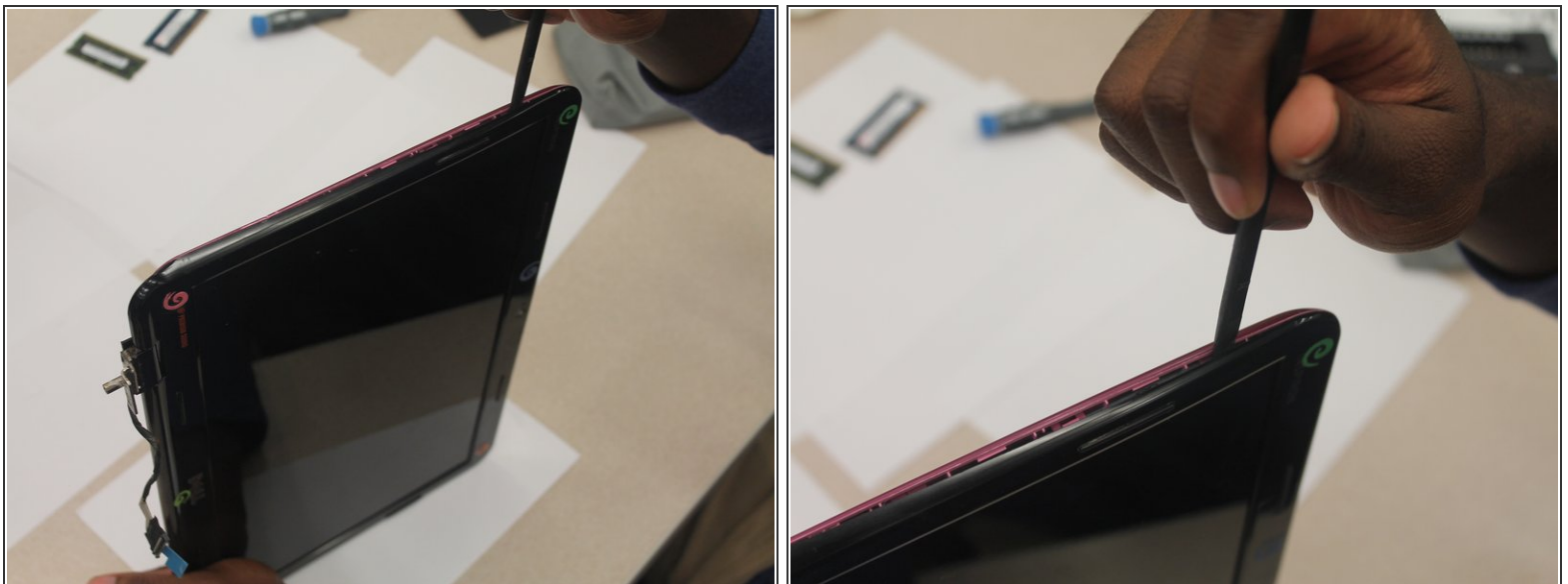
- Pull up both the black and white chords to completely detach the screen.

Step 13



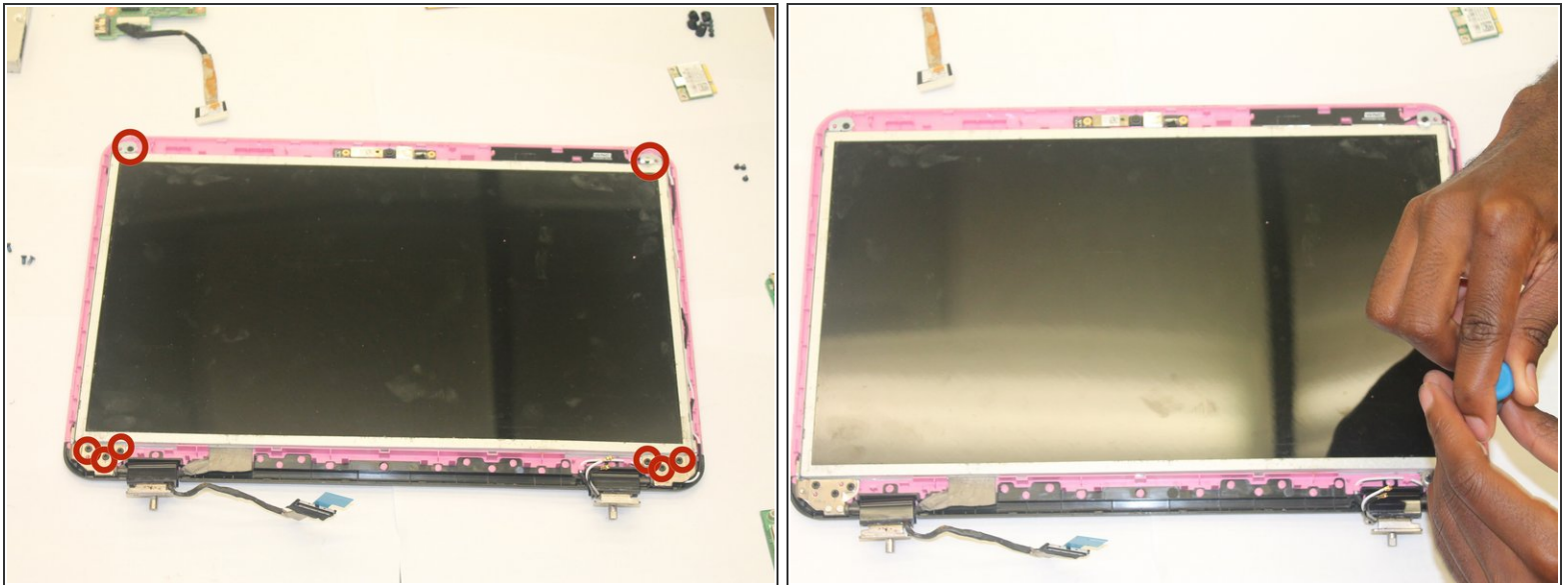
- Lift the screen from the base of the laptop.

Step 14



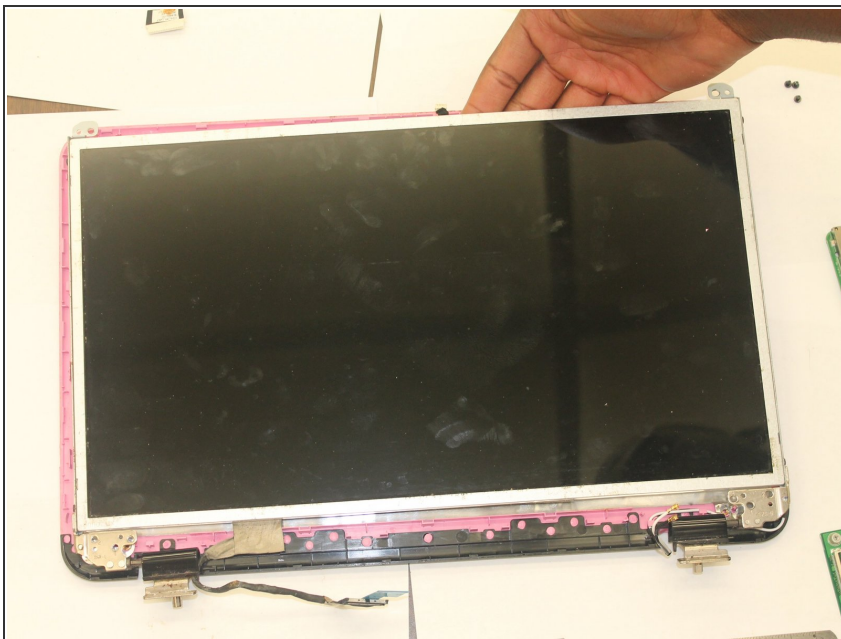
- Use a spudger to separate and remove the plastic frame on the front of the screen.

Step 15



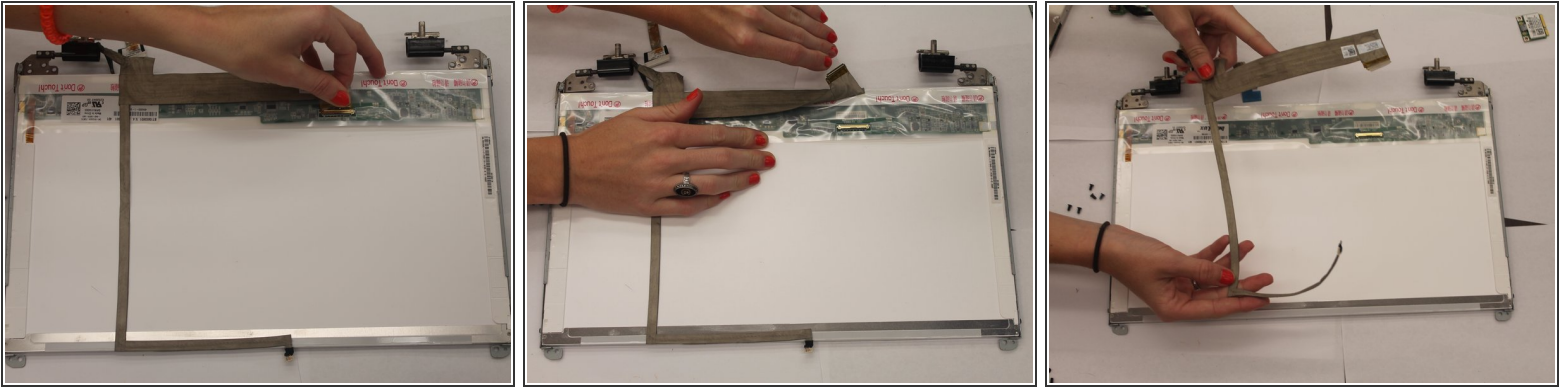
- Use a Phillips #000 Screwdriver to remove the 8 6.0mm Phillips #000 screws marked in the image.

Step 16



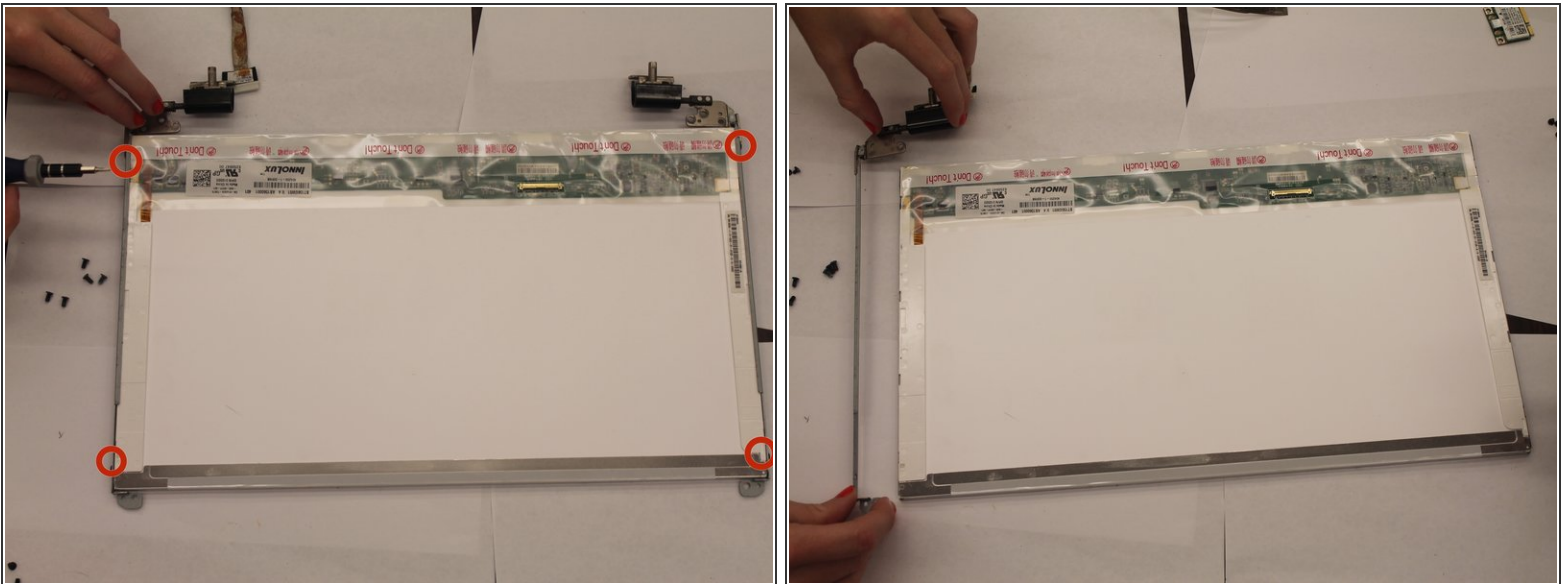
- Lift LCD screen from the plastic frame.

Step 17



- Flip LCD screen over to view the backside.
- Lift brown tab in the middle of the screen and pull to remove the entire piece.

Step 18



- Use a Phillips #000 Screwdriver to remove the four screws indicated (two on each side).
- Pull metal frames away from LCD screen.
- ⓘ The metal frame on each side is pulled away separately, so make sure to make note of which side each one came from.

To reassemble your device, follow these instructions in reverse order.