



Dell Inspiron M5110 Display Assembly Replacement

This guide will help you replace your Display Assembly

Written By: Maxwell Dumerant





TOOLS:

- [Phillips #0 Screwdriver](#) (1)
- [iFixit Opening Tools](#) (1)

Step 1 — Battery



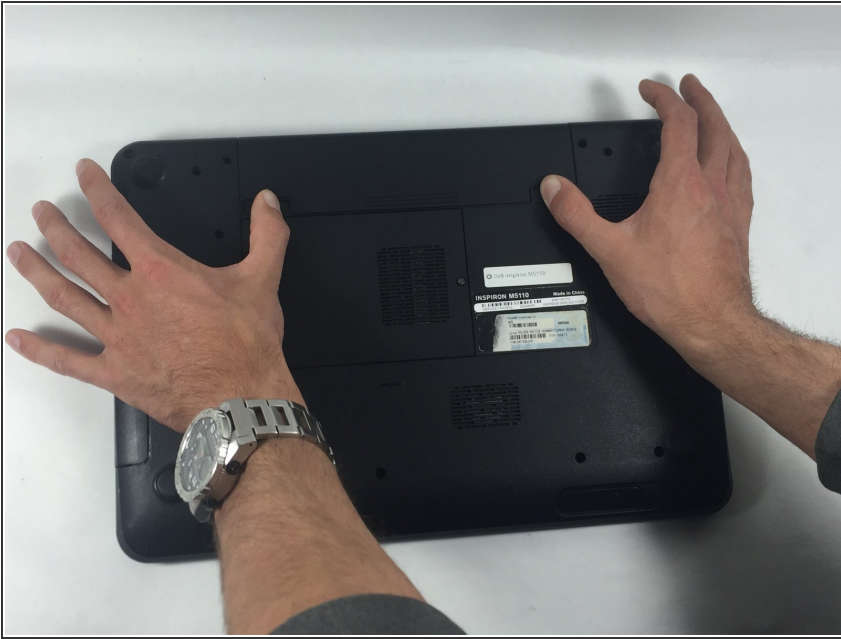
- Shut down the computer and turn it upside down.

Step 2



- Slide both of the battery release latches on the bottom of the device in towards the center of the computer.

Step 3



- Slide and lift the battery up and out from the device.

Step 4 — Keyboard



- Open the computer and push the screen back as far as possible.

Step 5



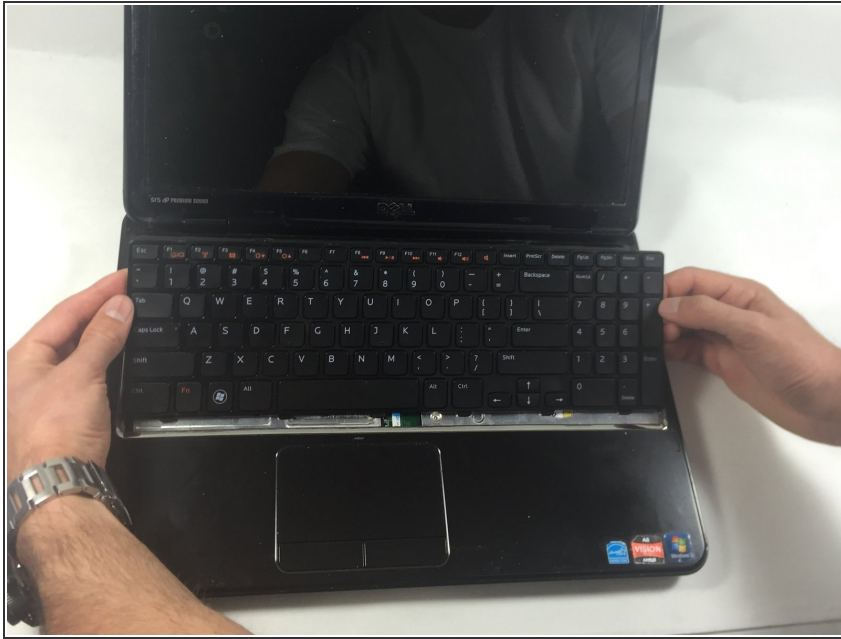
- Slide a plastic opening tool into the slots on the top of the keyboard.

Step 6



- Pry the keyboard away from the device using the plastic opening tool.

Step 7



- Lift and slide the keyboard towards the screen to remove the tabs on the keyboard from the slots on the palmrest.

Step 8



- Flip the keyboard over and place it on the front of the device making sure not to pull out the keyboard cable.

Step 9



- Lift up the connector latch and remove the keyboard cable. The keyboard is now free from the device.

Step 10 — Palmrest



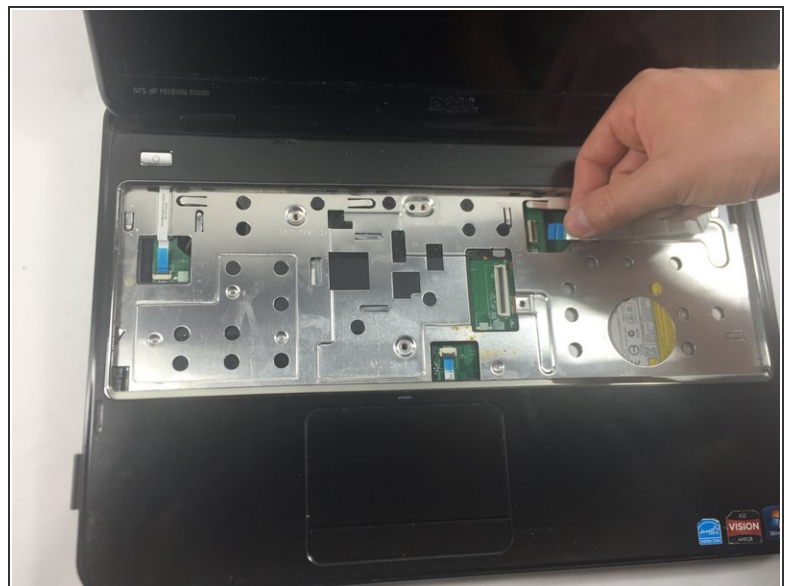
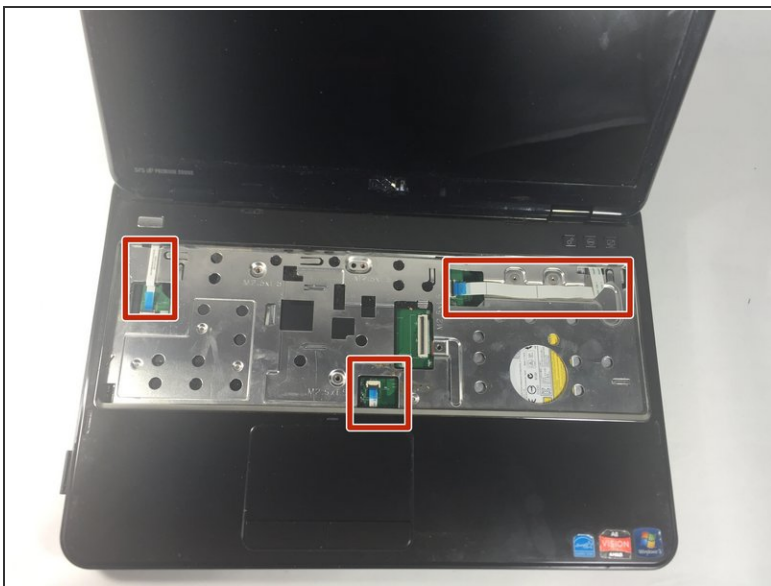
- Turn the computer over and remove the six screws that secure the palmrest assembly

Step 11



- Turn the computer over and open the display as far as possible and remove the four 5 mm Phillips # 0 screw holding the palmrest in place.

Step 12



- Disconnect the power button board cable, touch pad cable and the hot key board cable from the connectors.

Step 13



- Use a plastic opening tool to carefully pry out the palmrest assembly and lift it off the computer base.

Step 14 — Display Assembly



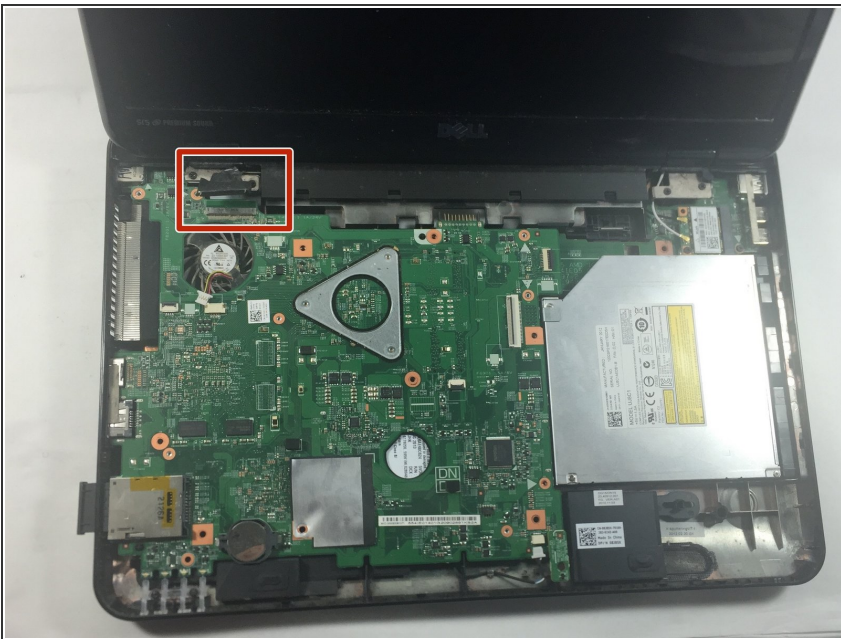
- Turn the device over and then remove the two 5 mm Phillips #0 screws that keeps the display assembly to the base and then flip the device.

Step 15



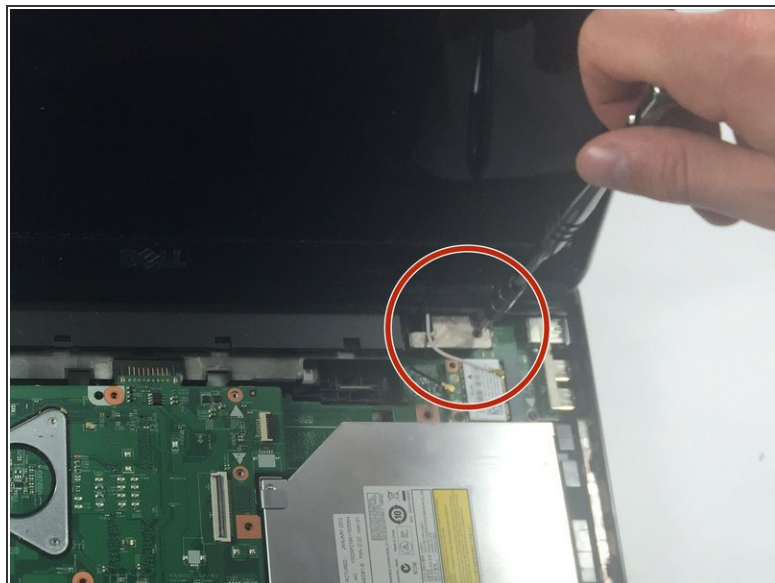
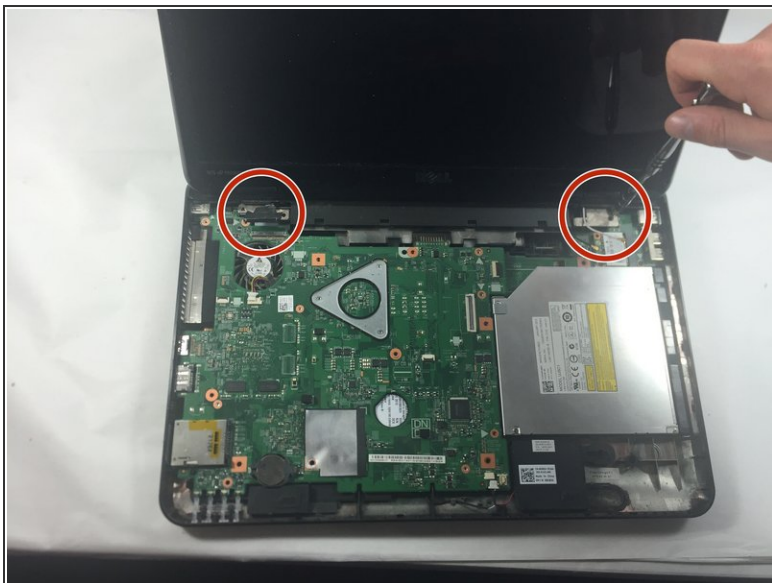
- Disconnect the display antenna cable from the Mini Card.

Step 16



- Disconnect the LCD display cable and touch screen cable.

Step 17



- There are two 5 mm Phillips # 0 screws on each hinge.
- Unscrew the four 5 mm Phillips # 0 screws holding the hinge that keeps the monitor in place.

Step 18



- Lift the display off the computer base.

To reassemble your device, follow these instructions in reverse order.