



# Dell Inspiron Mini 10 Keyboard Replacement

The keyboard is an input component for the device.

Written By: Danielle Jarecki



# INTRODUCTION

This guide will take you through how to remove the keyboard for cleaning or replacing.



## TOOLS:

- [iFixit Opening Tools](#) (1)
  - [Spudger](#) (1)
  - [Phillips #0 Screwdriver](#) (1)
-

## Step 1 — Battery



- ⚠ To prevent injury and loss of data, ensure the device is turned off.
- Slide the release latches out toward the edges to unlock the battery.

## Step 2



- Remove the battery by pulling it up and out.

## Step 3 — Keyboard



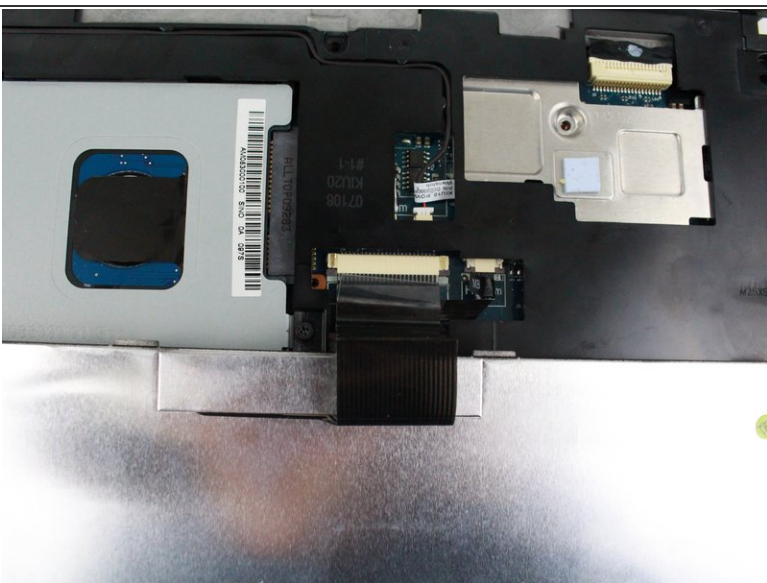
- Remove the three 8mm Philips 0 screws securing the keyboard.

## Step 4

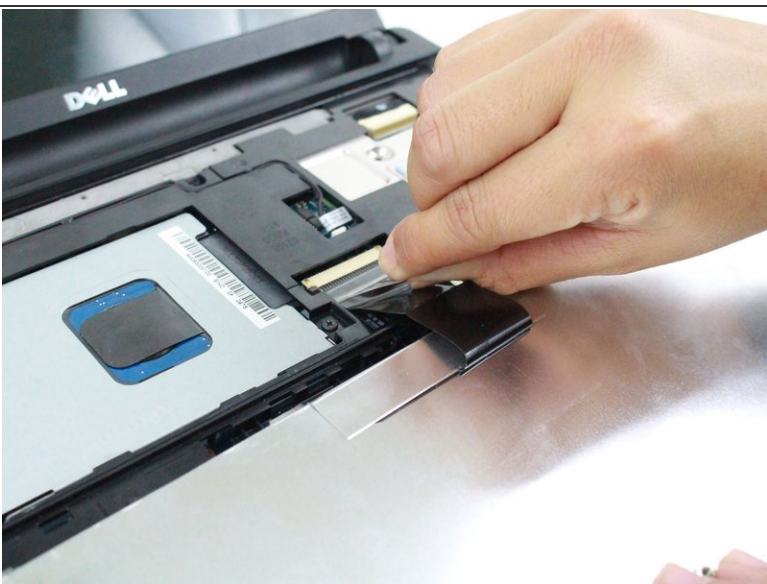


- Turn over the device and open the display.
- Gently pry open the keyboard with the plastic opening tool, working under the edges to release the clips.

## Step 5



## Step 6



- Push the clips out on either side of the ribbon cable to release it.
- Gently disconnect the ribbon cable by pulling on the clear tab.
- Remove the keyboard.

This document was generated on 2019-09-18 04:46:51 PM (MST).

To reassemble your device, follow these instructions in reverse order.