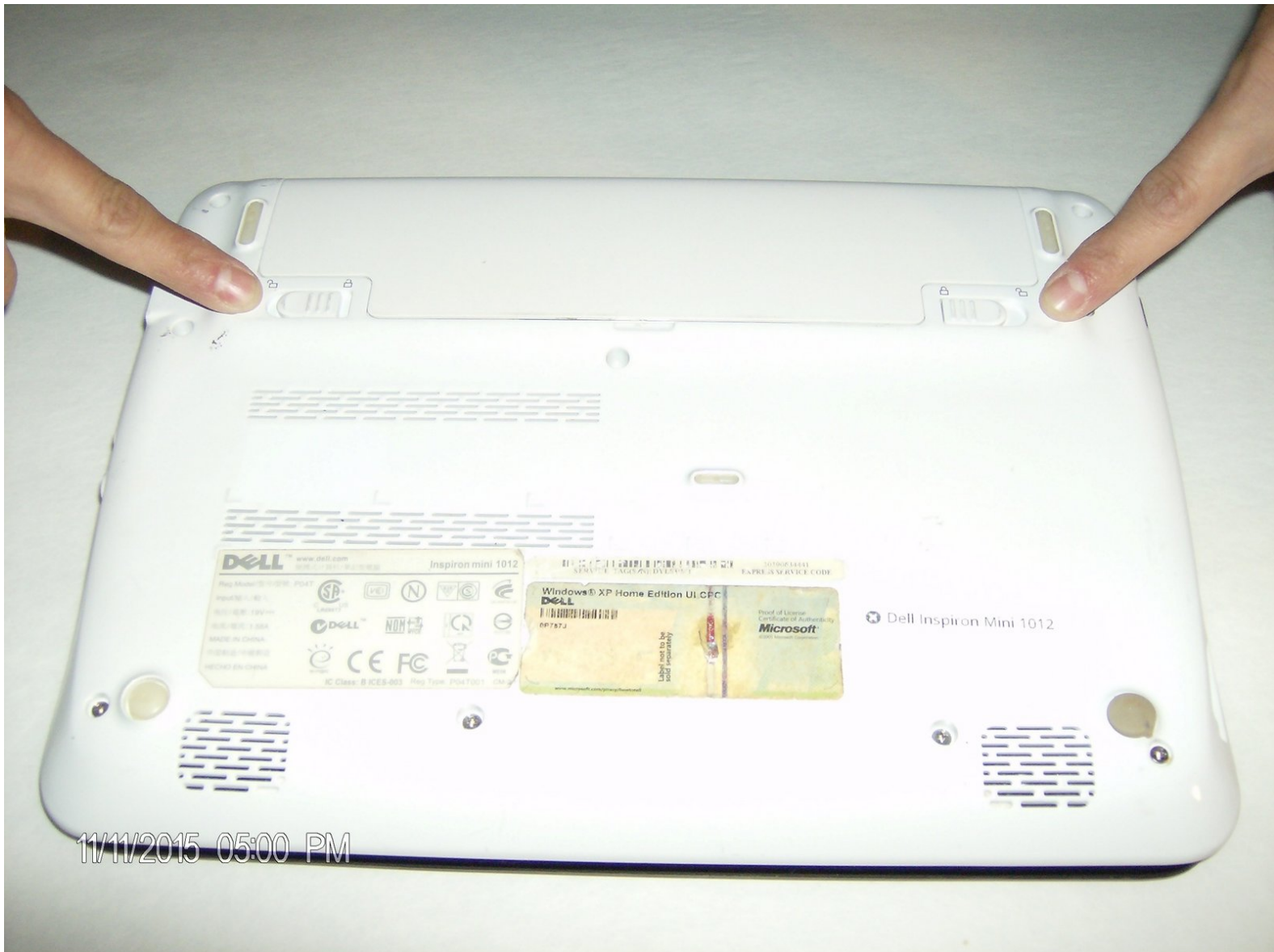




Dell Inspiron Mini 1012 Battery Replacement

How to locate, unlock, remove the battery, replace and lock the battery back in place.

Written By: sabinabarajas



INTRODUCTION

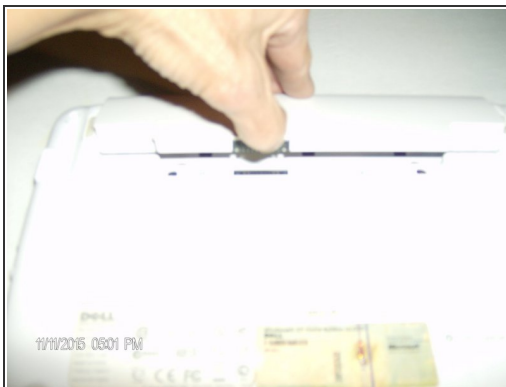
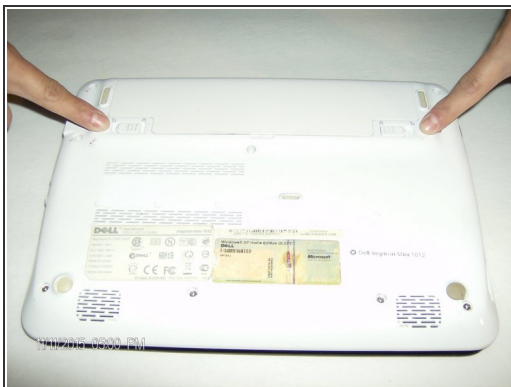
This guide will show you how to locate, remove, and replace the battery on your device.



PARTS:

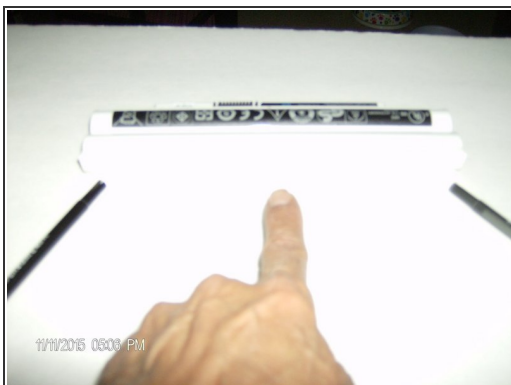
- [New battery. Type T96F2](#) (1)
-

Step 1 — Battery



- 1. Turn the device over and locate the two tabs that show an icon of a lock next to it. Slide both tabs to the unlocked position, find the notch located in the center between the two tabs and lift up on the battery and remove.
- 2. To replace battery-locate the three notches on battery that fit into the grooves on the device and snap the battery back onto the device and it will lock in place.

Step 2



- After inserting the 3 notches to device, push down until the battery snaps in place. Turn the device over and push the power button.

To reassemble, place new battery in the 3 slots and lock battery back in place.