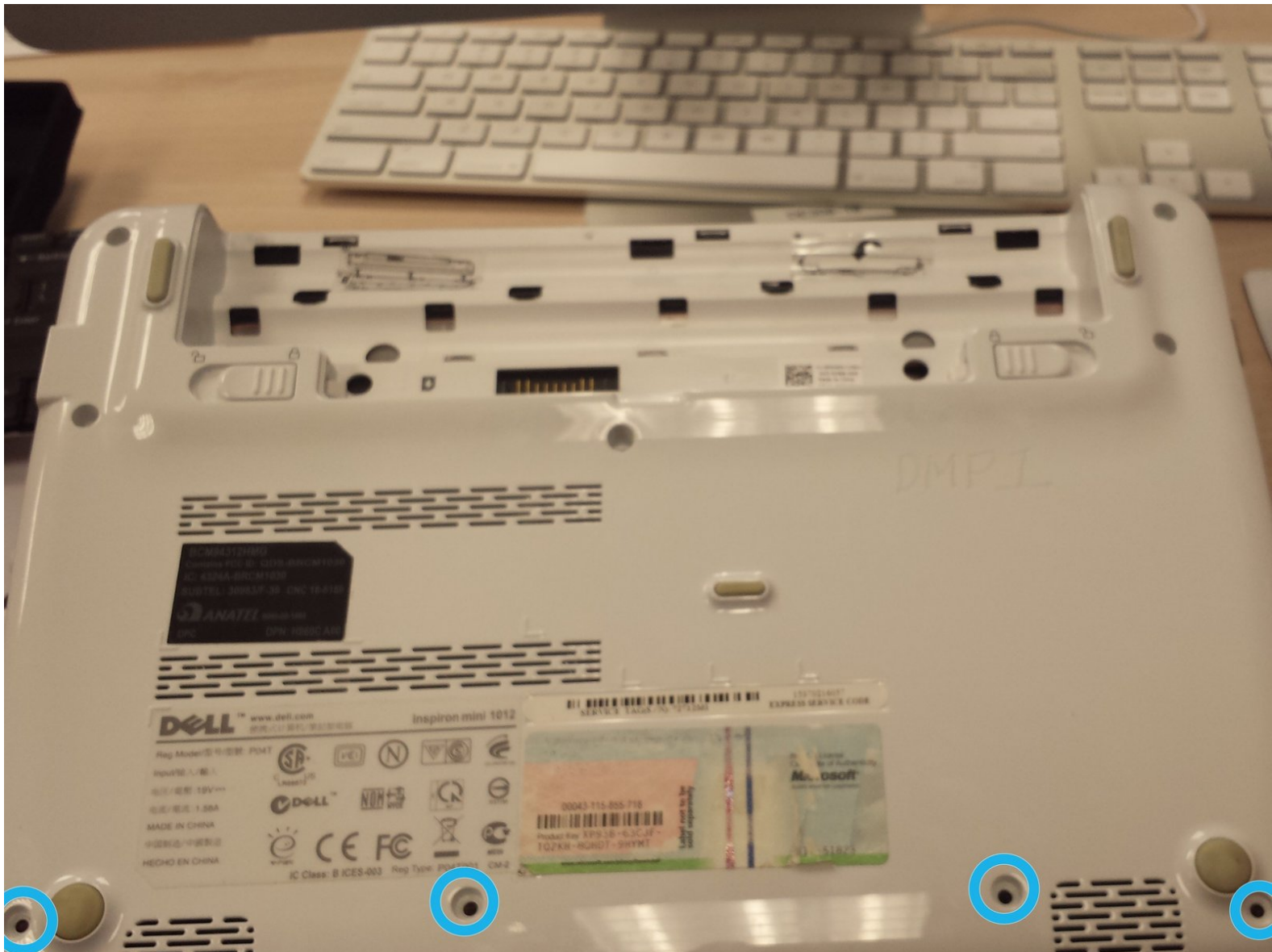




Dell Inspiron Mini 1012: Speakers Replacement

This guide will show you how to replace the speakers in your Dell Inspiron Mini 1012.

Written By: Marie K Bordley

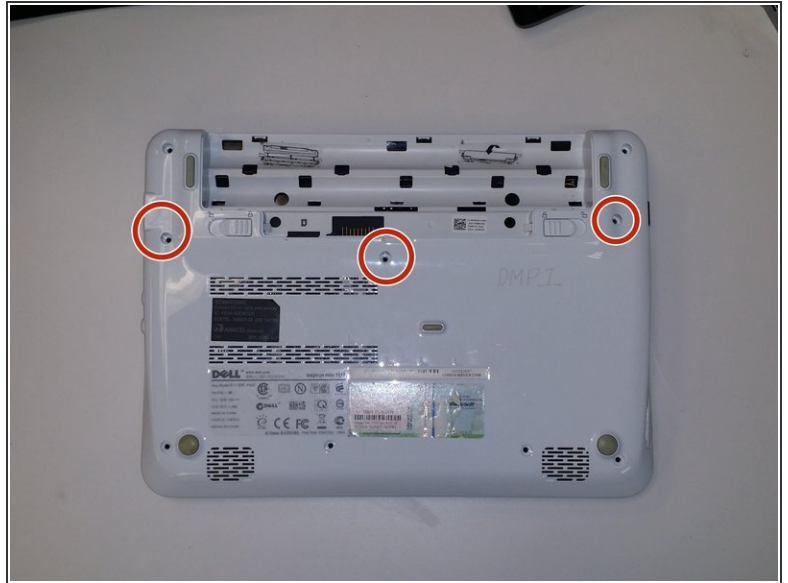
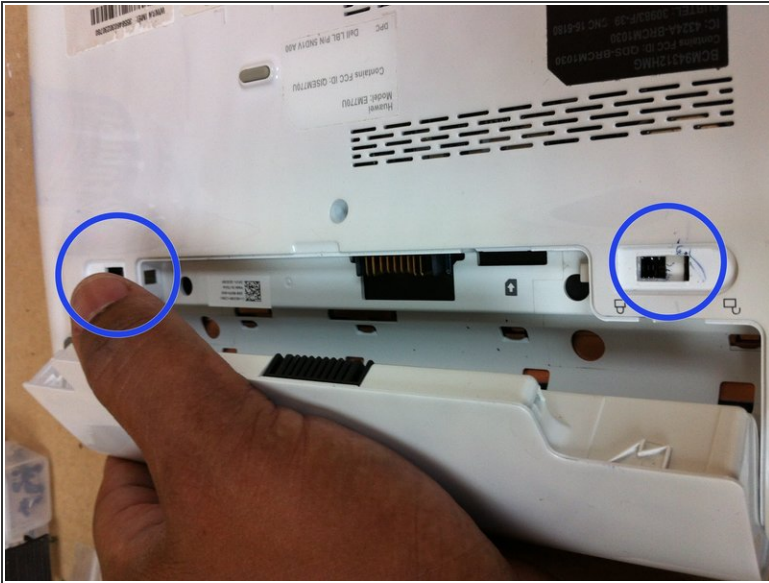




TOOLS:

- [Metal Spudger](#) (1)
 - [Spudger](#) (1)
 - [Phillips #1 Screwdriver](#) (1)
-

Step 1 — Hard Drive



- Turn the device over so that the back (white side) of the device is facing up.
- Remove battery from laptop by pushing the two tabs outward and pull the battery outward. The tabs are highlighted in blue. Place the battery off to the side.
- Remove the 3 screws highlighted in red that secure the keyboard to the case using the screw driver with largest phillips head in the box.
- Make sure to keep the screws separated by step to ensure that they can be put back in the correct location when reversing the steps.

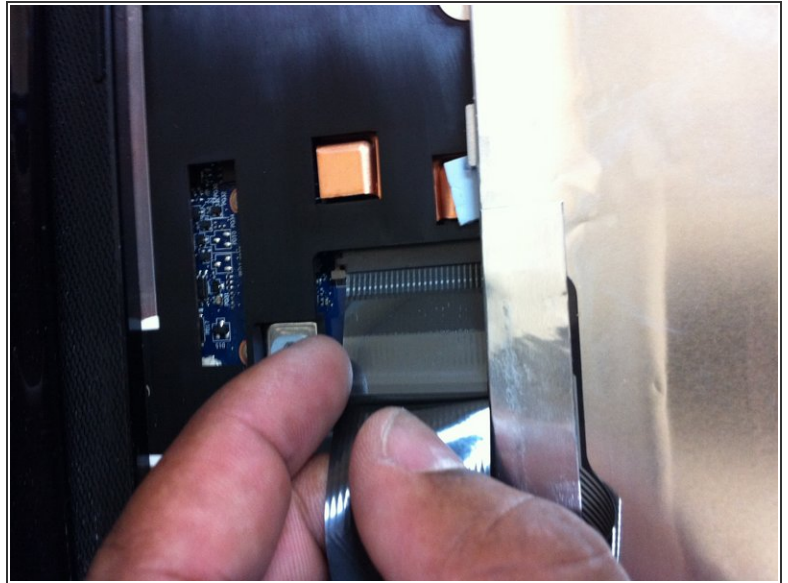
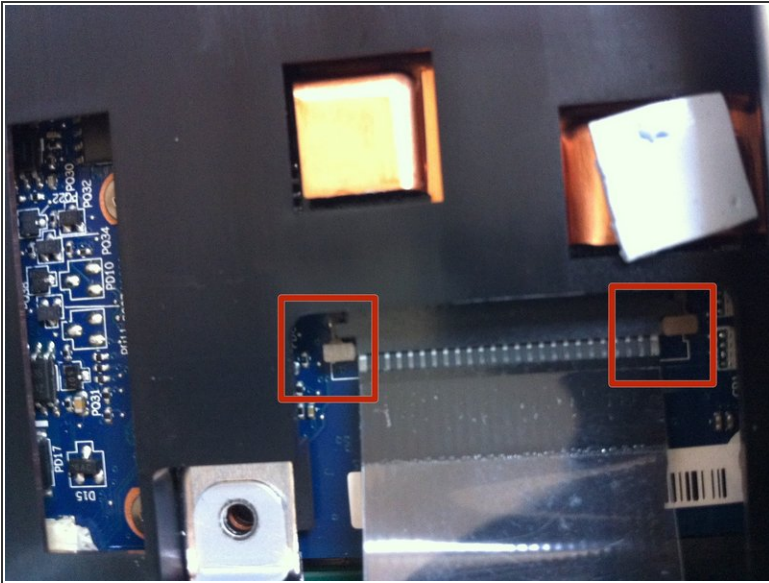
⚠ Notes about the reversal of steps will appear as a caution mark.

Step 2



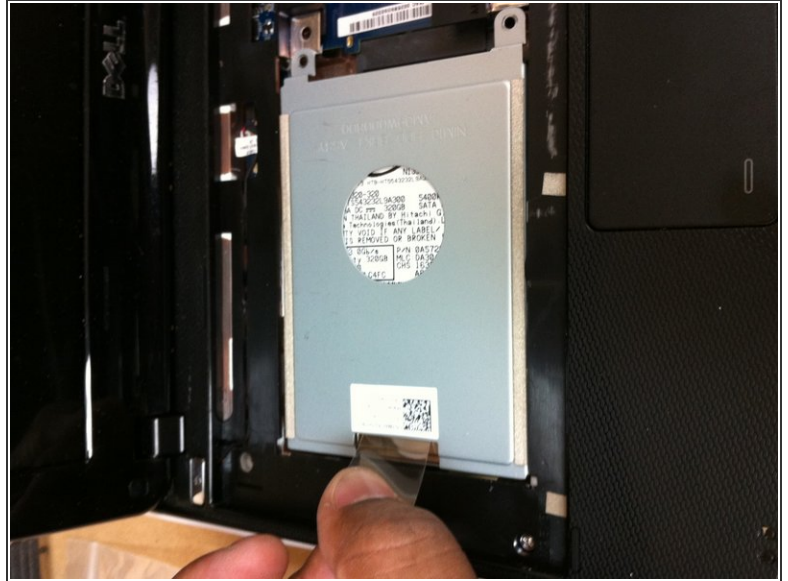
- Turn the device right side up and open the device to view the keyboard.
- Remove the keyboard away from the case, using a plastic spudger if necessary.
- The keyboard will still be attached to the motherboard by a ribbon cable.

Step 3



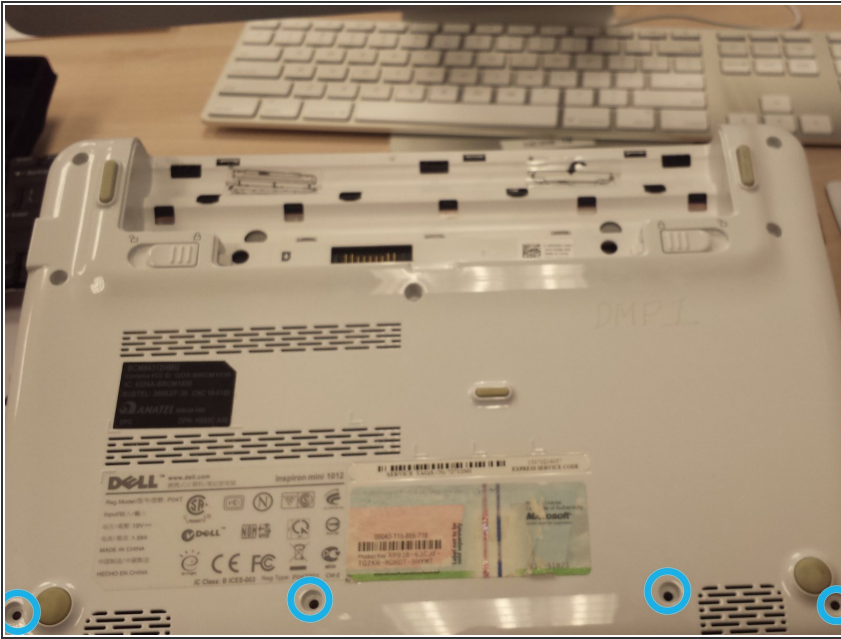
- Pull the ribbon cable to release the keyboard.
 - If necessary push the release tabs highlighted in red with a plastic spudger, these secure the keyboard ribbon cable. Lay the keyboard face down off to the side of your work space.
- ⚠ Be sure to lift up the release tabs that hold the ribbon in place, slide the ribbon in, and close the flap securing the ribbon in place. Lay the keyboard back down in its original location giving it a slight push to secure it in place.

Step 4



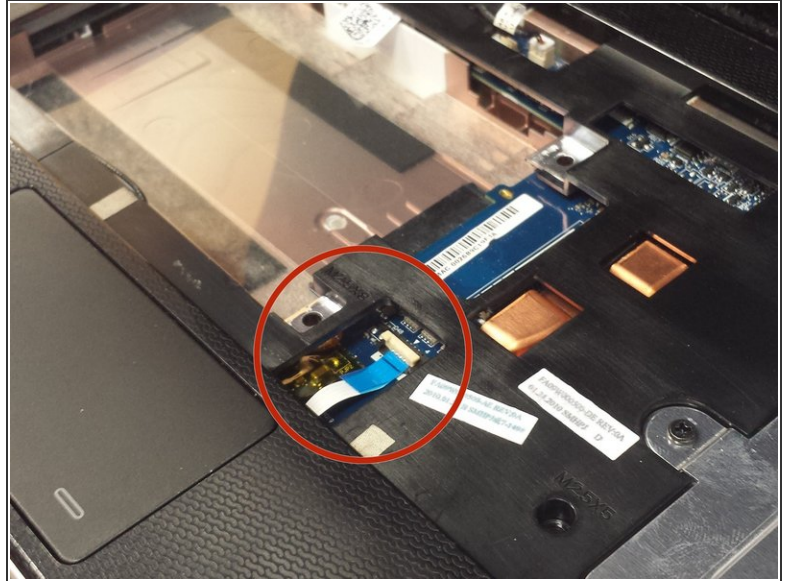
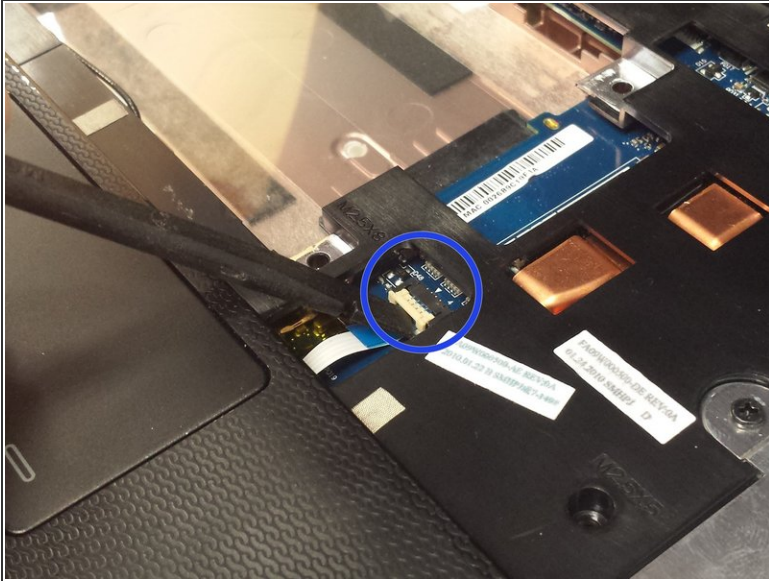
- Remove the 2 Phillips head screws securing hard drive to case. Use the same screw driver bit as before.
 - Pull the plastic tab connected to the hard drive outward in the left hand direction to remove hard drive from case. Place the hard drive off to the side.
- ⚠ When putting the hard drive back slide it in to the space so that the screw holes line up and press down until there is a snug fit.

Step 5 — Speakers



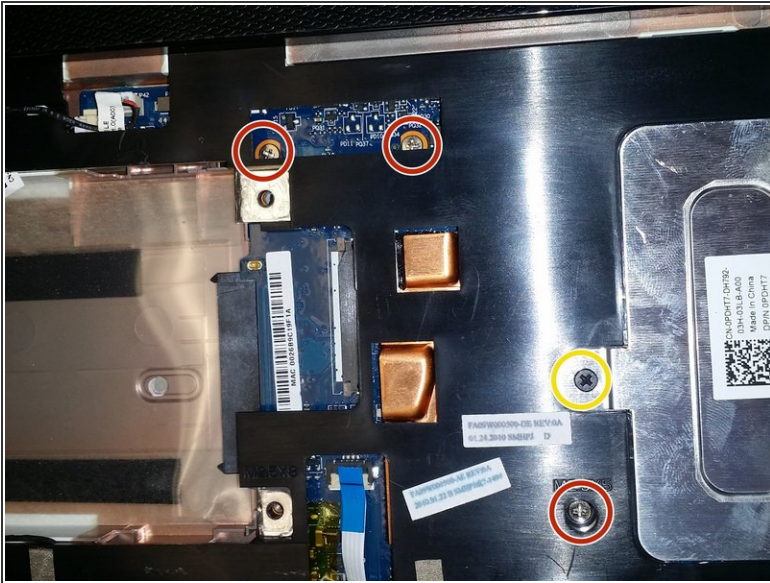
- Orient the device so that the back (white side) is facing upward again.
- Remove the screws highlighted in light blue in the picture using the same screw driver size as before.

Step 6



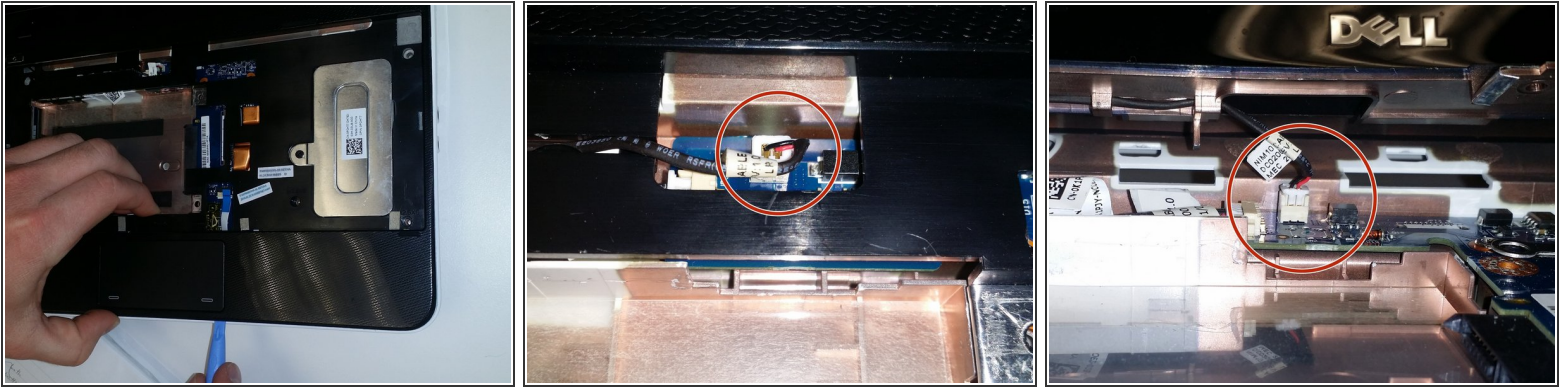
- Orient the device so that it is facing top side up with the device open.
 - Lift up the lock tab that holds in the ribbon connecting the track pad to the computer using your finger nail or the plastic spudger.
 - Pull ribbon to disconnect the blue half but leave the ribbon connected to the device at the other end.
- ⚠ When placing the ribbon back in its location pull up on the lock tab, slide the blue end of the ribbon in, and push the lock tab down to secure the ribbon in place.

Step 7



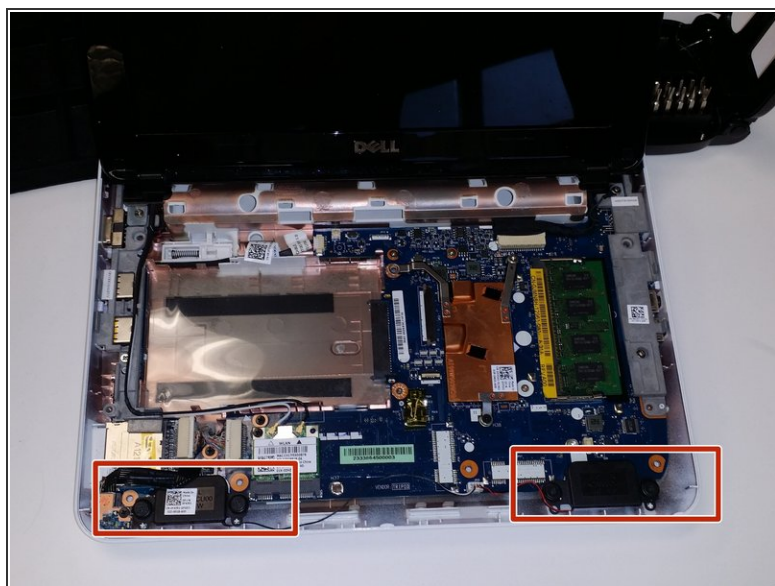
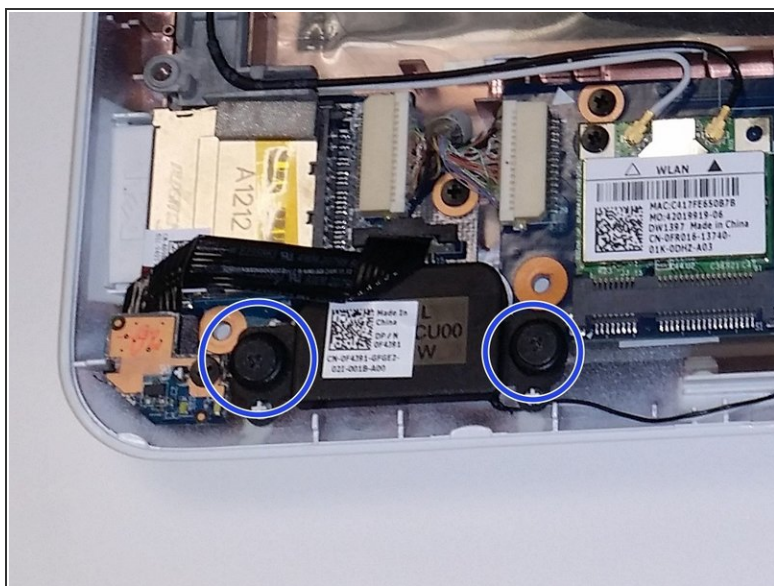
- Remove the three screws remaining underneath the keyboard using the same screw driver as before. (Not the black screw highlighted in yellow).
- The screws are different sizes, be sure to make note of where each screw goes.
- Remove the two screws at the front corners of the keyboard. They are highlighted in light blue.

Step 8



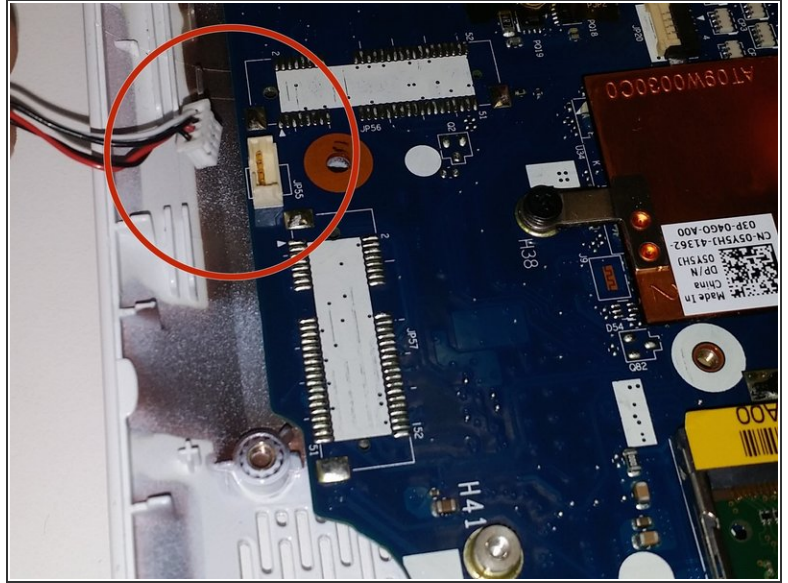
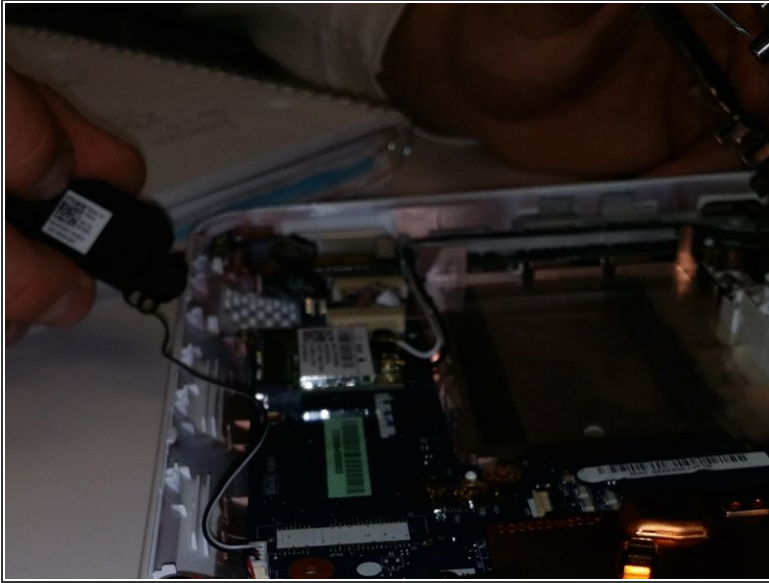
- Use a plastic spudger to remove the outer frame of the laptop. Once the spudger is between the outer frame and the laptop slide it along this seam all the way to the screen in both directions.
 - Once the outer frame is loose it will still be attached by a wire connection. To detach the outer frame completely, set the frame back in place and pull gently on the wires while using your finger nail to pop the white upper section of the tan box upward until it comes out.
- ⚠ When putting the outer frame back in place lay the frame down on the device in its correct location and orientation. Then re-attach the wires. Finally, push the outer frame downward until it clicks back into place.

Step 9



- Remove the screws holding the two speakers using the same screw driver as before. The speakers are located on the track pad side of the laptop and are highlighted in red.
- Each speaker has two screws.

Step 10



- Remove the speakers by pulling them upward gently. There are speaker wires that will still be attached to the circuit board.
 - To remove the speaker wires from the circuit board trace the wires to where they connect to the tan box. Using your finger nail or the plastic spudger pull gently on the wires and lift the white upper section of the tan box upward until it pops out.
- ⚠ When placing the new speakers in place be sure to attach the wires first.

Step 11



- ⚠ Reverse the steps in order to put the device back together, using the new speakers.
- ⚠ Remember to put the correct screws back in the correct locations.

This document was generated on 2020-02-14 08:13:09 AM (MST).

Perform these steps in reverse order with your new speakers to finish installation.