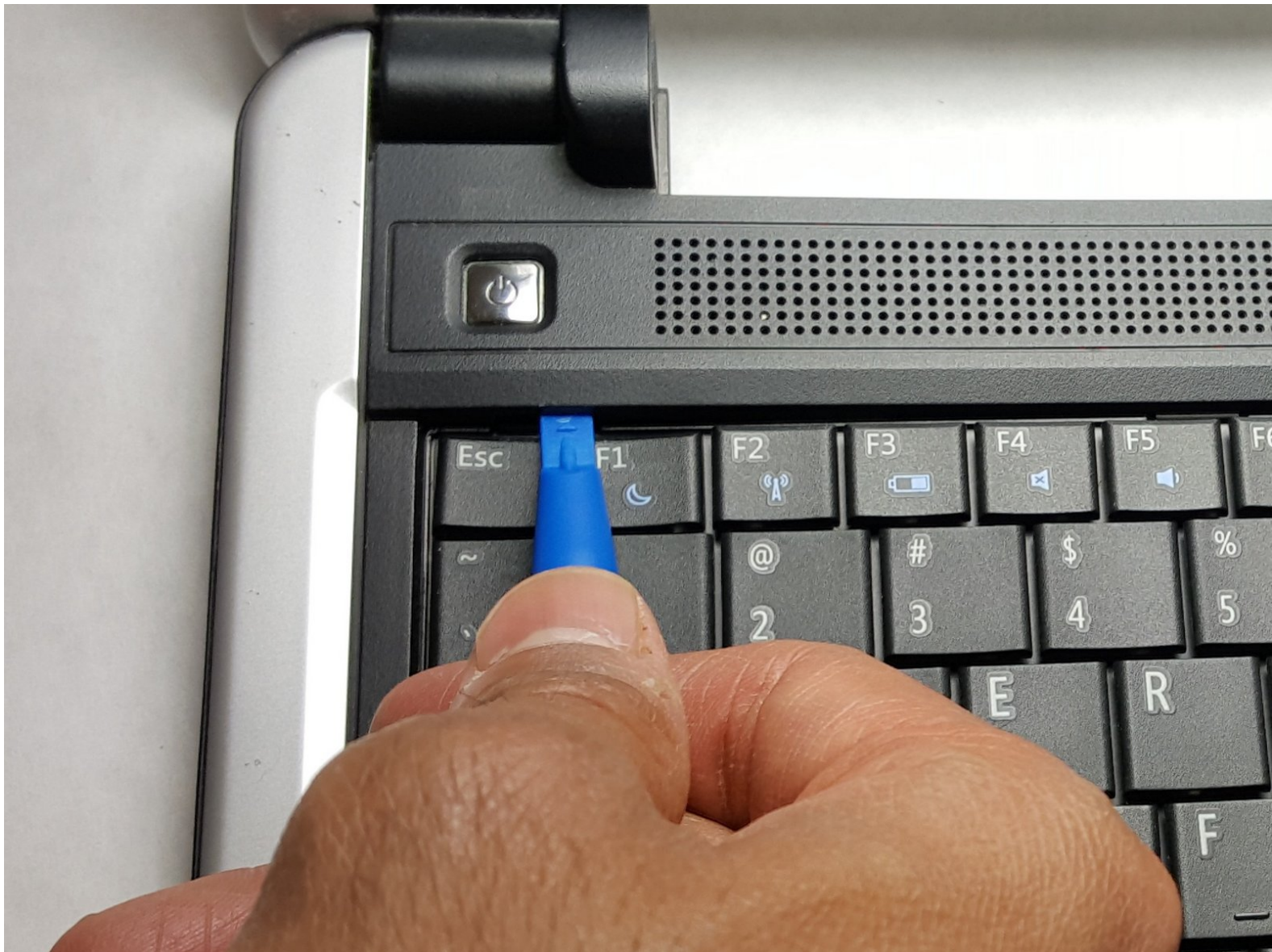




Dell Inspiron Mini 1210 Keyboard Replacement

A guide to show how to replace the Dell Inspiron Mini 1210 keyboard.

Written By: Jacob Barker



INTRODUCTION

A guide to show how to replace the Dell Inspiron Mini 1210 keyboard.



TOOLS:

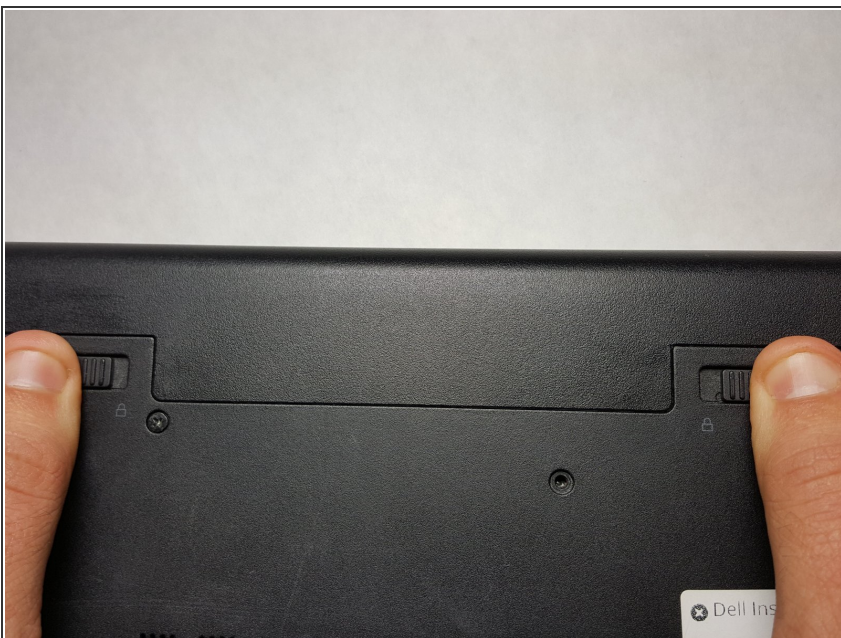
- [iFixit Opening Tools](#) (1)
 - [Phillips #000 Screwdriver](#) (1)
-

Step 1 — Battery



- Lay the laptop on the table with the plastic back facing you.

Step 2



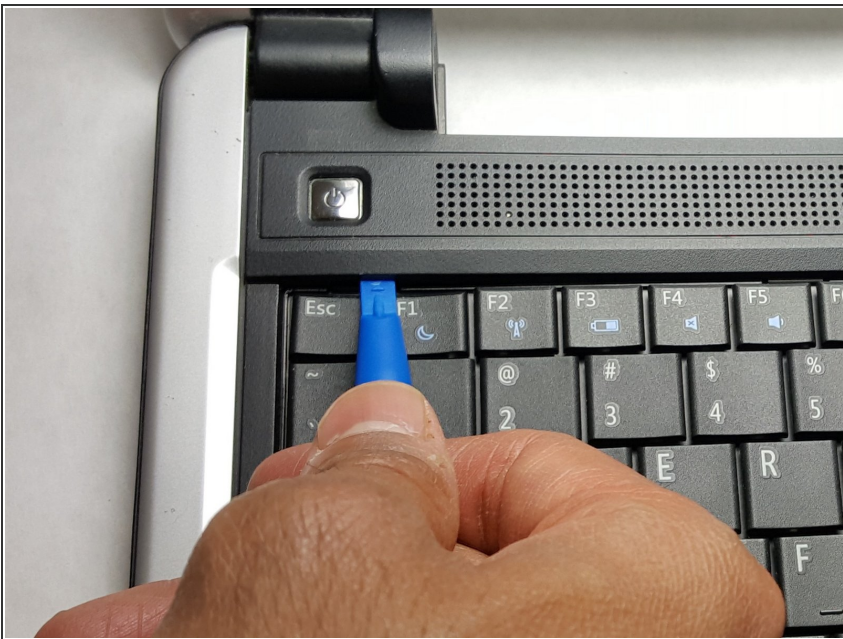
- Place both thumbs on the plastic slides with the unlock and lock symbols underneath them as shown in the picture.
- Move the slides outward towards the unlock symbols.

Step 3



- Grip the battery and pull it out.

Step 4 — Keyboard



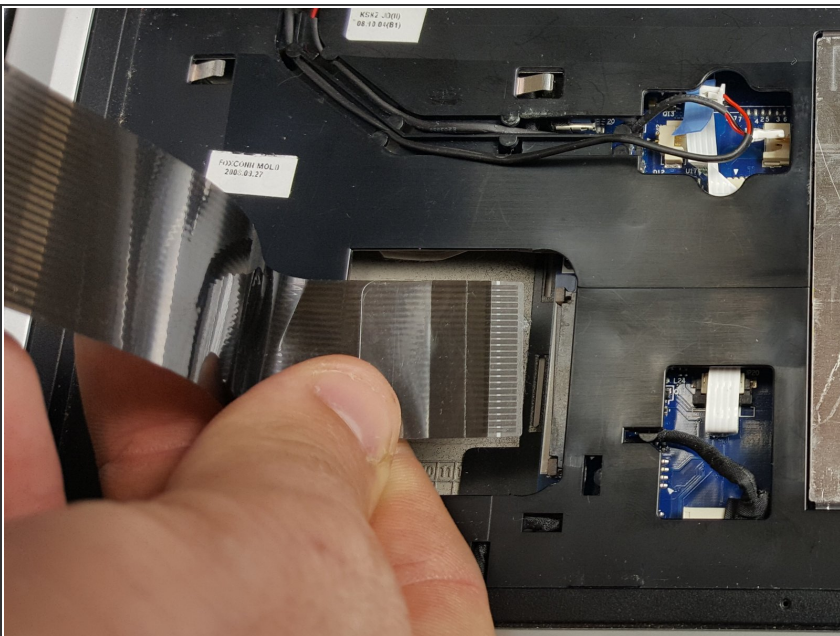
- Remove the black strip with the power button.

Step 5



- Remove two 4.65mm screws on top of the keyboard.

Step 6



- Lift up on the keyboard and remove ribbon from its connector.

To reassemble your device, follow these instructions in reverse order.