



Dell Inspiron N4010 Top Cover Replacement

Removal and replacement of the top cover gives access to many components

Written By: Jonathan Sellier



INTRODUCTION

Removal and replacement of the top cover gives access to many components. The top cover also includes the track pad assembly. This guide is often a prerequisite to replacing many internal components.



TOOLS:

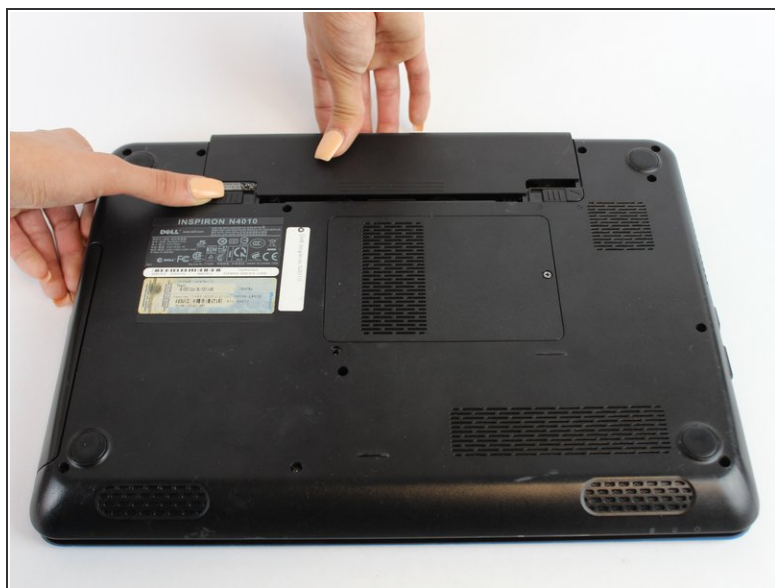
- [Phillips #0 Screwdriver](#) (1)
 - [Spudger](#) (1)
 - [iFixit Opening Tools](#) (1)
-

Step 1 — Battery



- ⚠ Make sure the laptop is not plugged into any wall outlets or the charger
- Unlock the battery by sliding the right-hand switch to the right.

Step 2



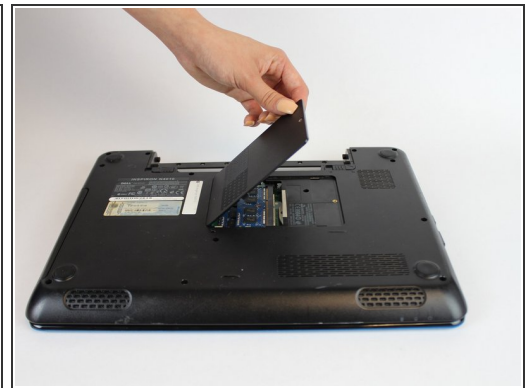
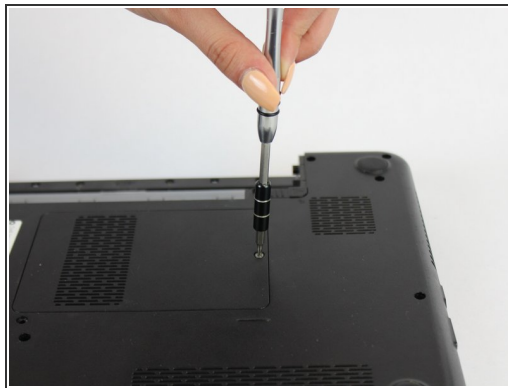
- While holding the left-hand switch to the left position, pull the battery away from the laptop.

Step 3



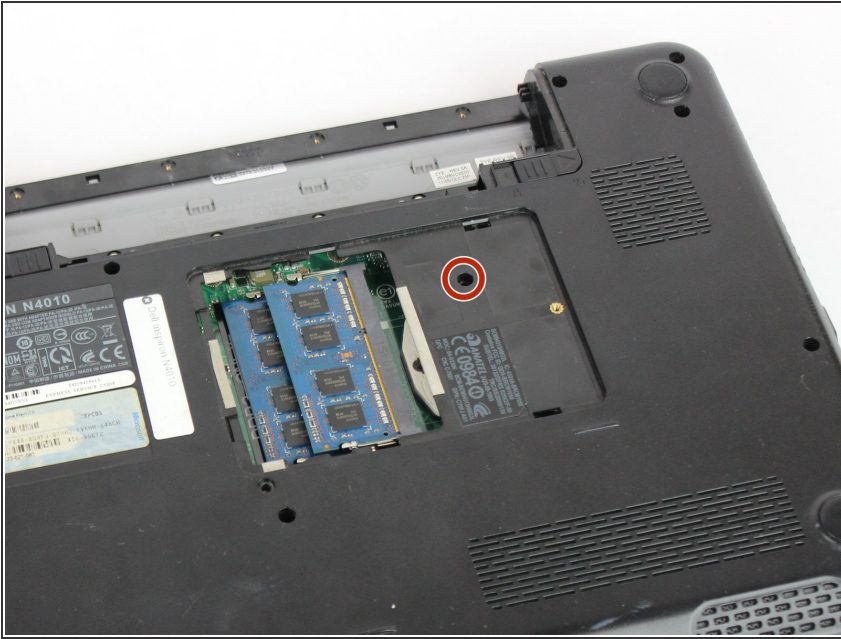
- The battery is now fully removed and the laptop will not power on without it.

Step 4 — Keyboard



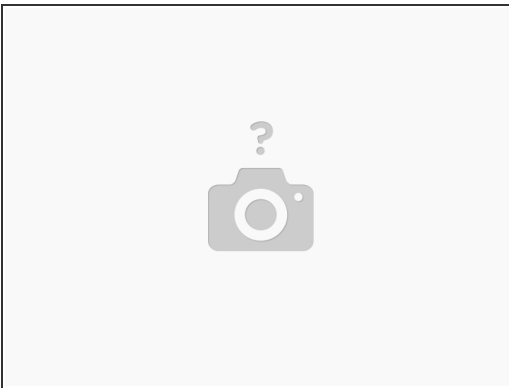
- Using the #0 Philips head, unscrew the indicated screw.
- Carefully pull the RAM cover up and away.

Step 5



- Unscrew the indicated 5.7mm screw beneath the RAM Cover.

Step 6



- Remove another screw above the battery release tab

Step 7



- Using a thin plastic tool (such as a guitar pick or spudger) at the top of the keyboard just above the F7 key, gently pry the keyboard away.
- Move the spudger to either end at the top of the keyboard to fully undo all plastic clips.

Step 8



- Carefully tip the keyboard upwards and pull it slightly away from the body of the laptop.

⚠ Be careful not to put stress on the ribbon cable below.

Step 9



- Carefully unclip the ribbon cable by tipping the keyboard towards the screen.

ⓘ The keyboard is now completely disconnected.

Step 10 — Top Cover



- Remove the indicated 5.7mm screws.
- Remove the smaller 3mm screws from underneath the battery compartment.

Step 11



- With a plastic spudger, pry away the silver top cover from the black casing.
- Move the tool to the right and left along the seams to fully disconnect the cover.

Step 12



- Disconnect the indicated ribbon cables underneath where the keyboard sits.

Step 13



- Lift the cover upwards and away from the body of the laptop, after removing the optical drive and unscrewing the three screws on the right

To reassemble your device, follow these instructions in reverse order.