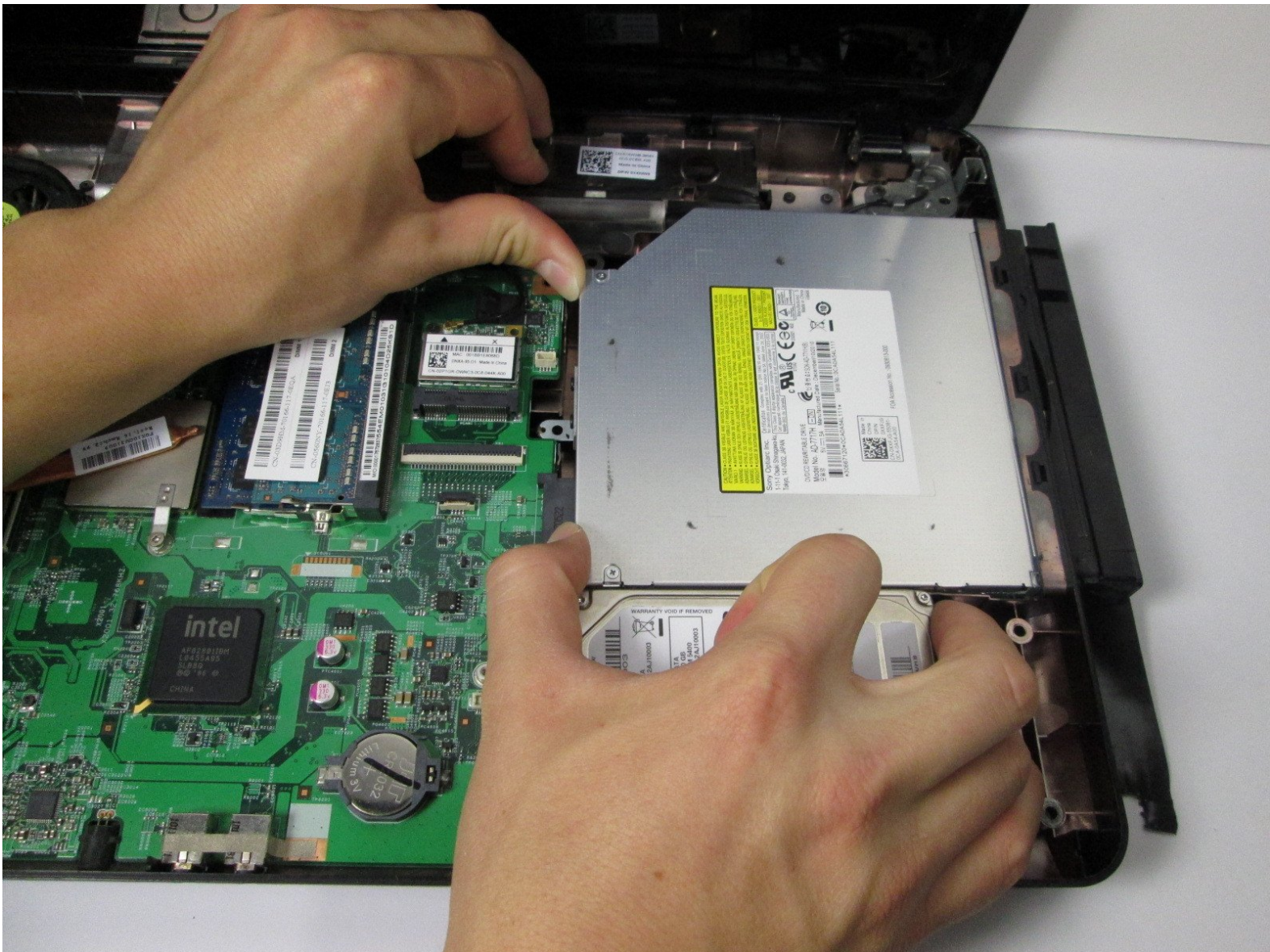




Dell Inspiron N5030 Disc Drive Replacement

This guide shows how to take out and replace the disk drive of the Dell Inspiron N5030.

Written By: Charles



INTRODUCTION

If your disk drive on your Dell Inspiron N5030 is not working, and you have tried the other options on the troubleshooting page, this guide will help you replace it with a new one.

TOOLS:

- [Phillips #0 Screwdriver](#) (1)
 - [iFixit Opening Tools](#) (1)
-

Step 1 — Battery



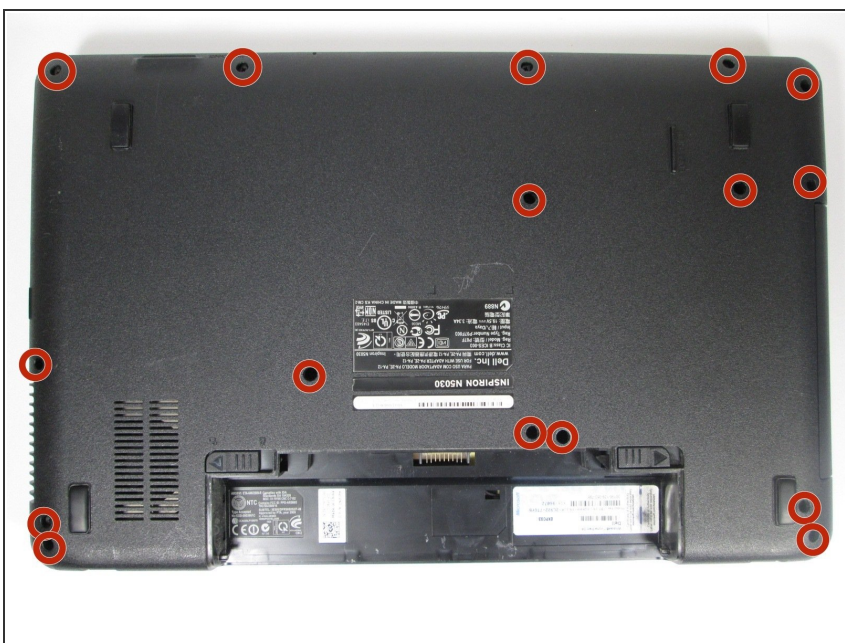
- Turn the computer over on its back so the battery compartment faces towards you.
- Place your fingers on the small buttons with arrows pointing outwards.
- Push and slide the buttons outward to unlock the battery compartment.

Step 2



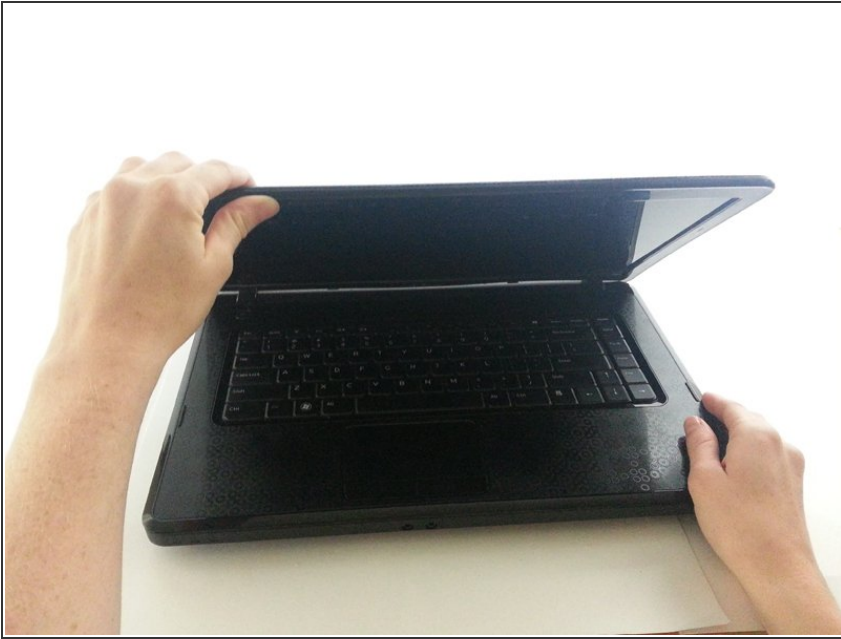
- Grab the battery and pull it towards yourself.
- Remove the battery.

Step 3 — Keyboard



- Use a Phillips #0 screwdriver to unscrew the sixteen 0.6 mm screws on the back panel.

Step 4



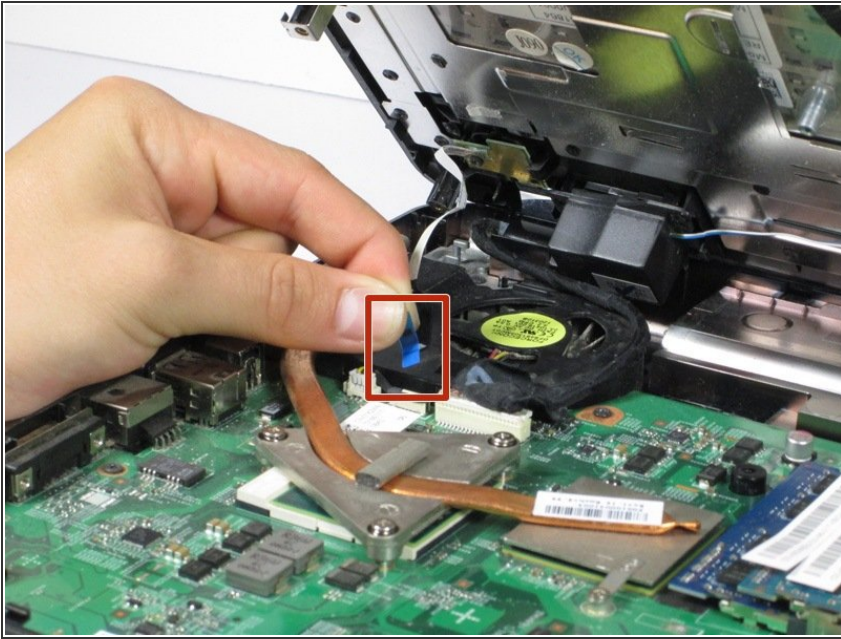
- Flip over the laptop and open it so that the screen faces you.

Step 5



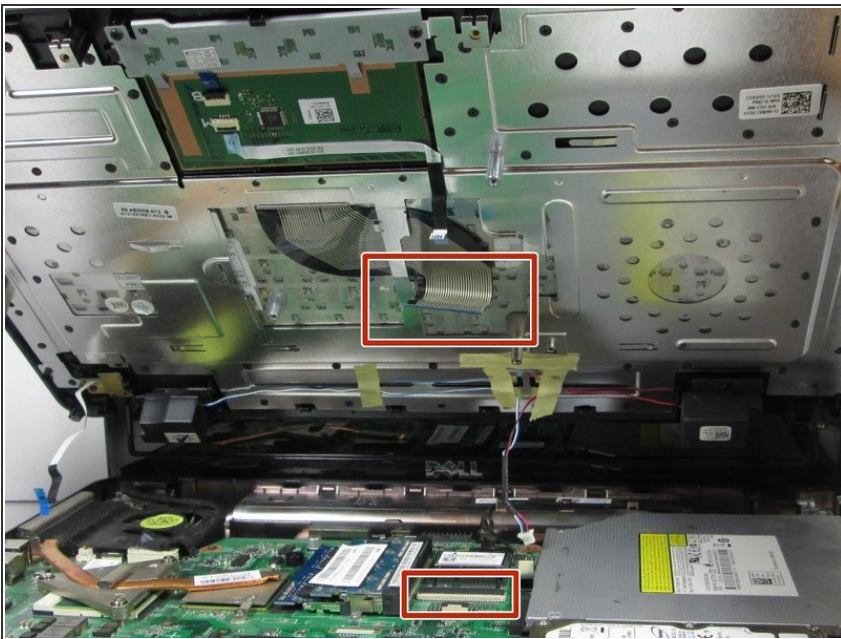
- Use the plastic opening tool and your fingers to pry off the top panel.
- ⓘ Pry the panel off starting at any one of the corners and then continue around the edges of the computer.

Step 6



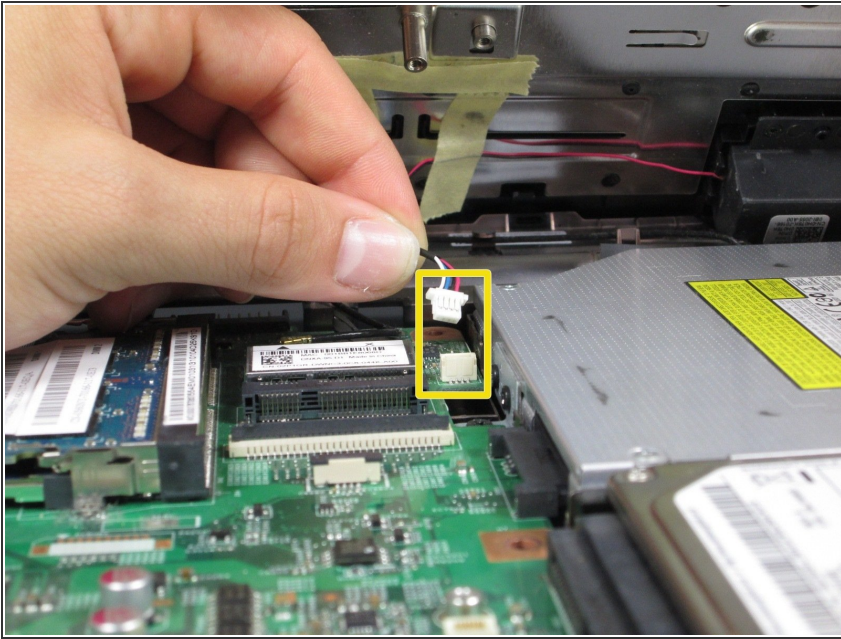
- ⚠ Be careful when lifting off the keyboard panel. There are multiple delicate cables connecting the panel to the motherboard.
- Pull up on the blue plastic tab connected by the white strip to unhook the keyboard panel from the motherboard.

Step 7



- Flip up the small locking flap on the keyboard cable ZIF socket and disconnect the keyboard ribbon cable.

Step 8



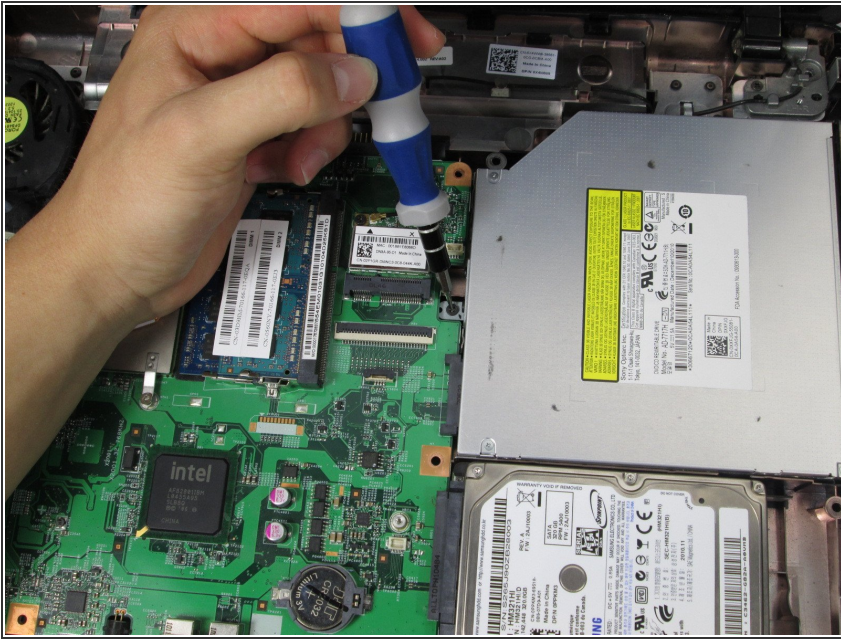
- Pull up on the wire tab with the blue, white, black, and red wires to detach the speakers from the motherboard.

Step 9



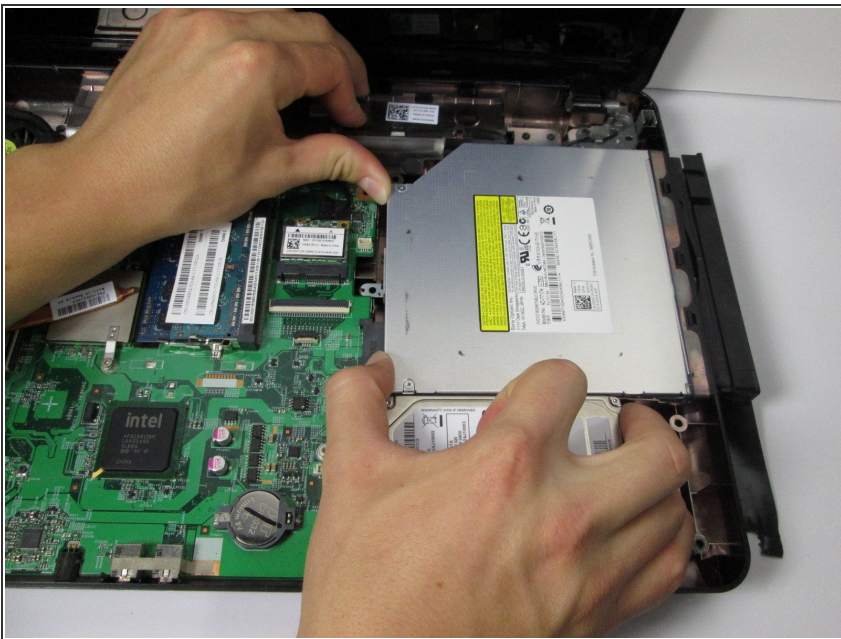
- Remove the top keyboard panel.

Step 10 — Disc Drive



- Use a Phillips #0 screwdriver to unscrew one 0.6 mm screw located just to the left of the disc drive.

Step 11



- Position your thumbs to push firmly and slide the disc drive to the right through the rectangular hole in the side of the laptop and out.

To reassemble your device, follow these instructions in reverse order.